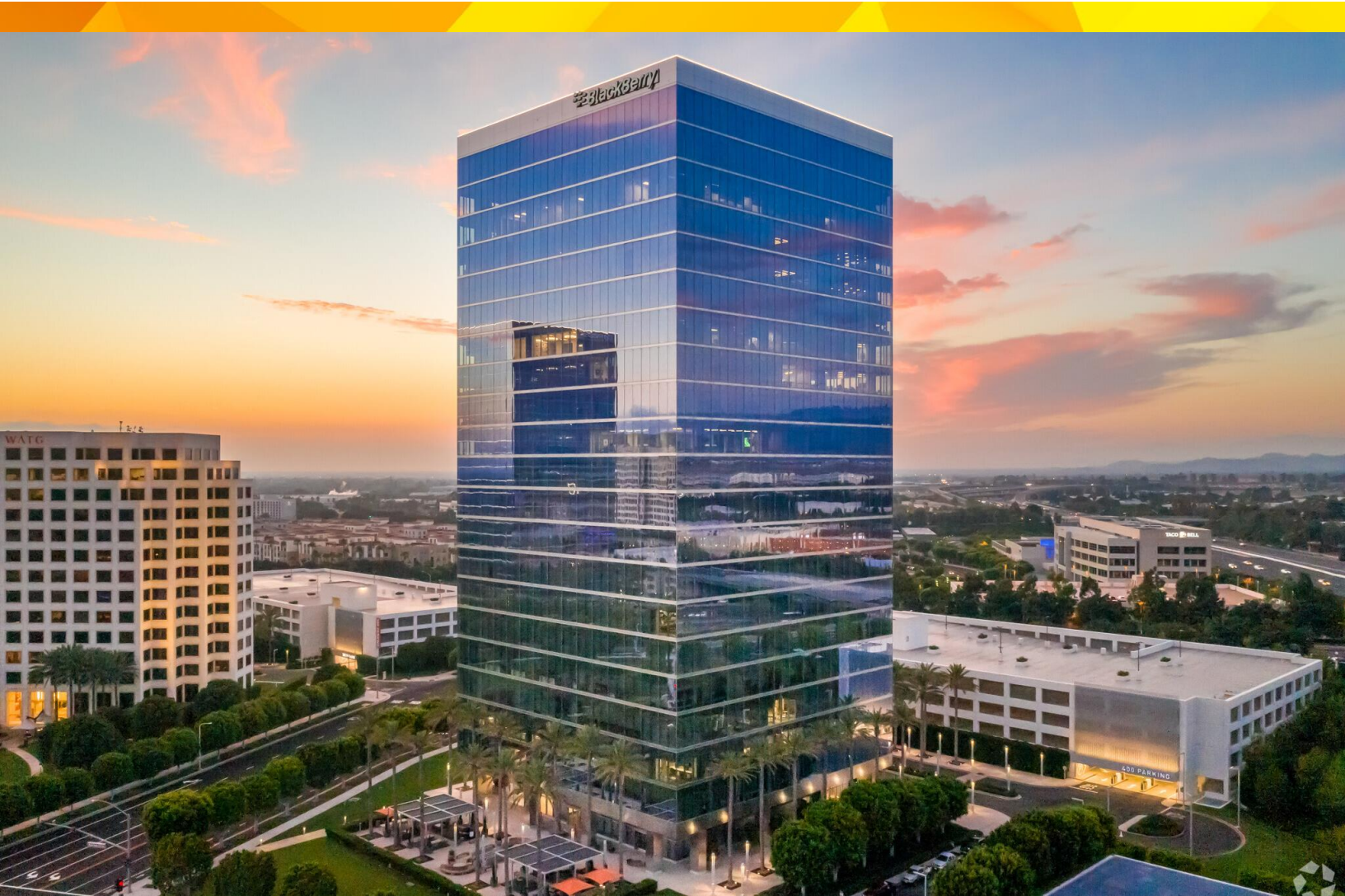


Spectrum Center Drive 10th Floor Office Available

savills

FOR SUBLEASE 400 Spectrum Center Drive, 10th Floor, Irvine, CA, 92618



SPACE PROFILE

+/- 22,000 SF
Total SF Available

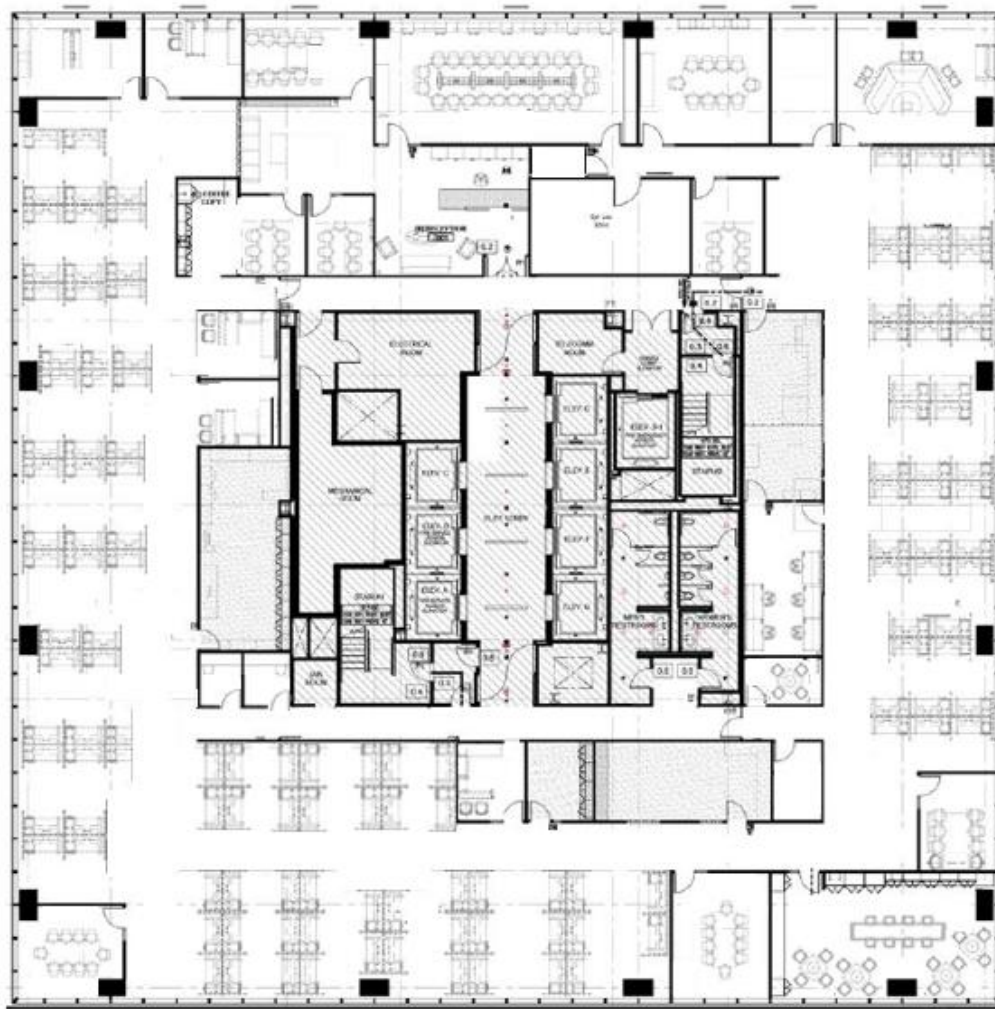
1/31/2028
Term Thru

4/1,000 Unreserved
Parking Space

Call to Verify
Rental rate

12/1/2024
Availability

Available
Furniture



Key Highlights

- 10th floor office features floor-to-ceiling glass with panoramic views of South Orange County
- Furniture available – Plug & Play
- Outdoor space, EV charging station, fitness center with locker rooms and showers, conference center
- Walking distance to Irvine Spectrum Entertainment Center
- Call to tour





Jeff Manley

+1 949 706 6617
jmanley@savills.us
License 01170369

Taylor Wood

+1 949 706 6924
twood@savills.us
License 01868409



The information contained in this communication has been obtained from a variety of sources believed to be reliable but has not been verified. NO WARRANTY OR REPRESENTATION, EXPRESS OR IMPLIED, IS MADE AS TO THE CONDITION OF THE PROPERTY OR ACCURACY OR COMPLETENESS OF THE INFORMATION CONTAINED HEREIN AND SAME IS SUBMITTED SUBJECT TO ERRORS, OMISSIONS, CHANGE OF PRICE, RENTAL OR OTHER CONDITIONS, WITHDRAWAL WITHOUT NOTICE AND TO ANY SPECIFIC CONDITIONS IMPOSED BY THE PROPERTY OWNER OR LESSOR.



Jeff Manley

+1 949 706 6617
jmanley@savills.us
License 01170369

Taylor Wood

+1 949 706 6924
twood@savills.us
License 01868409



The information contained in this communication has been obtained from a variety of sources believed to be reliable but has not been verified. NO WARRANTY OR REPRESENTATION, EXPRESS OR IMPLIED, IS MADE AS TO THE CONDITION OF THE PROPERTY OR ACCURACY OR COMPLETENESS OF THE INFORMATION CONTAINED HEREIN AND SAME IS SUBMITTED SUBJECT TO ERRORS, OMISSIONS, CHANGE OF PRICE, RENTAL OR OTHER CONDITIONS, WITHDRAWAL WITHOUT NOTICE AND TO ANY SPECIFIC CONDITIONS IMPOSED BY THE PROPERTY OWNER OR LESSOR.