

18415 Stuebner Airline Rd



Presented by
The Nina Marino Realty Team

18415 Stuebner Airline Rd, Spring, TX 77379



Price: \$8,500,000

Great Commercial Land located on Stuebner Airline with 1409 feet of frontage Road. 23.133 Acres! Curb cut in place. Curb/Gutter/Sidewalk, Electricity, Gas, Irrigation, Sewer, Streets, Telephone, Water. Approval to be annexed into MUD granted. Proposed Use - Apartment Units - Senior, Commercial, Distribution, Industrial, Industrial Park, Mixed Use, Multifamily, Office Park, Retail! Houston George Bush Intercontinental Airport 30 minutes, 19.5 miles. Call The Nina Marino Realty Team for more information! 281-364-3773

18415 Stuebner Airline Rd

18415 Stuebner Airline Rd, Spring, TX 77379



Prime Investment Property Located In Spring, TX

Ideal Location for Retail on the Frontage with Townhomes or Small Apartment Complex behind!



Nina Marino

sales@ninamarino.com
(281) 364-3773

The Nina Marino Realty Team

2219 Sawdust Rd, Suite 1802
The Woodlands, TX 77380



18415 Stuebner Airline Rd

18415 Stuebner Airline Rd, Spring, TX 77379

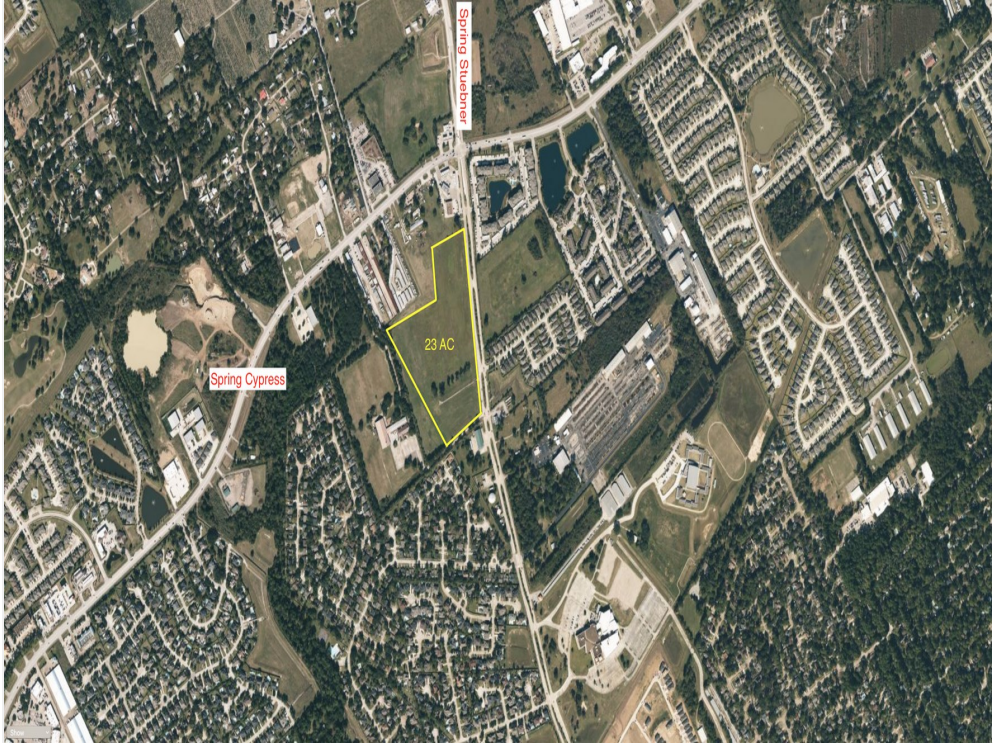
18415 Stuebner Airline Rd

18415 Stuebner Airline Rd, Spring, TX 77379

Property Photos



Building Photo

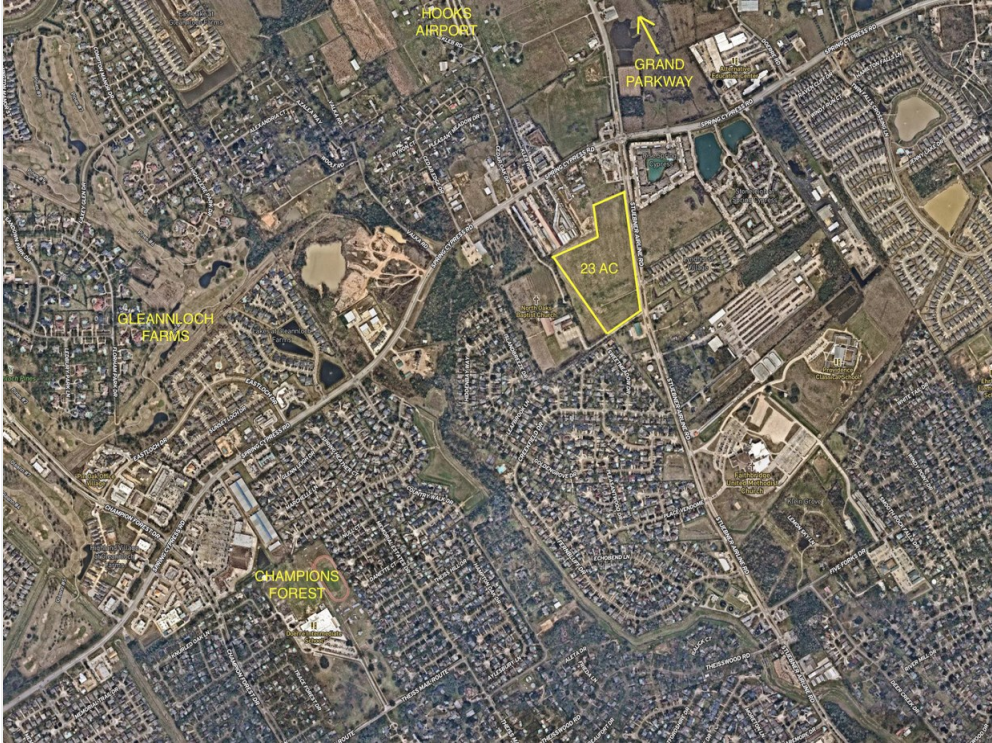


Building Photo

18415 Stuebner Airline Rd

18415 Stuebner Airline Rd, Spring, TX 77379

Property Photos



Building Photo

18415 Stuebner Airline Rd

18415 Stuebner Airline Rd, Spring, TX 77379

Location

