

# Roselli Arts Building

2300 East Oakland Park Boulevard, Fort Lauderdale, FL 33306



**FOR LEASE**  
PROFESSIONAL OFFICE/RETAIL SPACE

Joseph Jarquesy, CCIM  
Office: 954.890.3390  
jjarquesy@CREassetadvisors.com

3471 N Federal Highway | Suite 205  
Fort Lauderdale, FL 33308  
www.creassetadvisors.com

# PROPERTY SUMMARY

2300 East Oakland Park Boulevard, Fort Lauderdale, FL 33306



## PROPERTY DESCRIPTION

CRE Asset Advisors presents the Roselli Arts Building, a three story retail/office building located in the Times Square Plaza on the south east corner of Oakland Park Blvd and Federal Hwy (US-1). The building features single studios of approximately 350 SF and double studios of approximately 700 RSF. The building's common areas were recently renovated but still maintain their sleek Midcentury- Modern Feel. Studios feature 24-hour, tenant controlled AC, free and metered parking, and 2 restaurants on the 1st floor. Time Square Plaza, the Coral Ridge Mall, Publix Supermarket and a number of other services and restaurants are within walking distance.

## PROPERTY HIGHLIGHTS

- Single and double studios
- Affordable rates
- Renovated common areas
- Free Parking
- 24 Hour tenant controlled AC
- Onsite restaurants

## OFFERING SUMMARY

<b>Availability:</b>	Single Studios - \$800 p/m Double Studios - \$1,600 p/m
<b>Year Built:</b>	1960
<b>Building Size:</b>	15,708 SF

# Office Availability

2300 East Oakland Park Boulevard, Fort Lauderdale, FL 33306



## SPACES

## LEASE RATE

Suite 204	591 SF		\$1,379.00
Suite 208	693 SF	(private restroom/plumbing included)	\$1,617.00

# Suite 204

2300 East Oakland Park Boulevard, Fort Lauderdale, FL 33306

**\$1379.00**  
Per Month

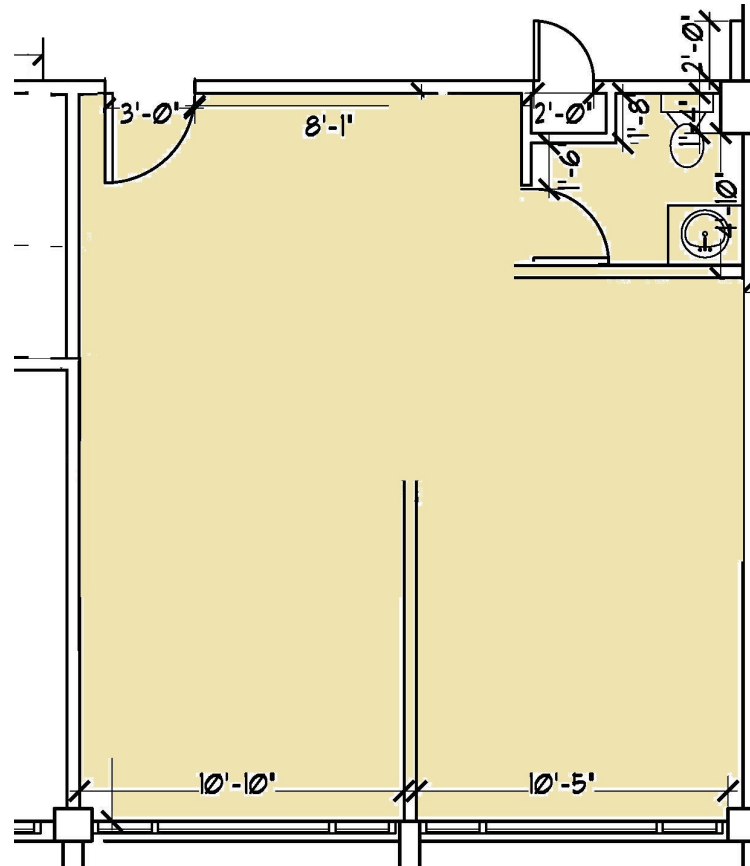
**OFFICE SPACE**

# Suite 208

2300 East Oakland Park Boulevard, Fort Lauderdale, FL 33306

\$1,617.00  
Per Month

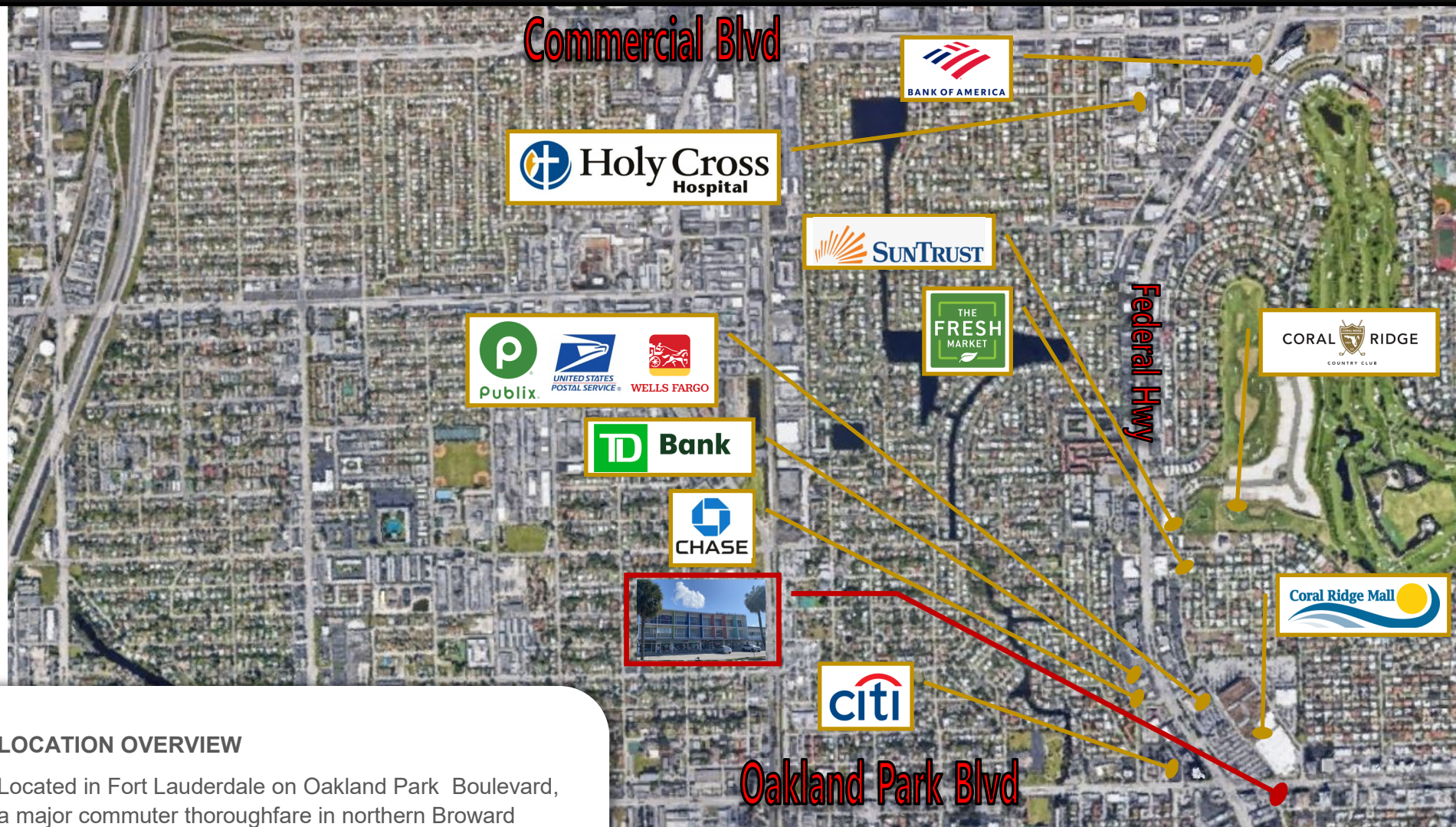
## OFFICE SPACE



# Roseli Arts Building

# FOR LEASE

2300 East Oakland Park Boulevard, Fort Lauderdale, FL 33306



## LOCATION OVERVIEW

Located in Fort Lauderdale on Oakland Park Boulevard, a major commuter thoroughfare in northern Broward County with close proximity to US-1 and less than 1 mile from the beach and Pompano Beach Air Park.

Access to I-95 is approximately 2 miles allowing easy access to and from the site from all major roadways.

**Joseph Jarkesy, CCIM**

Office: 954.890.3390

[jjarkesy@CREassetadvisors.com](mailto:jjarkesy@CREassetadvisors.com)

3471 N Federal Highway | Suite 205

Fort Lauderdale, FL 33308

[www.creassetadvisors.com](http://www.creassetadvisors.com)