



Rendering

355

BLEECKER STREET

WEST VILLAGE STOREFRONT | 1,400 SF

LOCATED ALONG WEST VILLAGE'S FASHION ROW

355 Bleecker Street

Between Charles & West 10th Street

Available

Ground: 1,400 sf
Cellar: 1,100 sf storage
Frontage: 10' along Bleecker Street
Possession: Immediate
Rent: Call or email for details

Comments

- Join numerous luxury fashion and beauty brands
- Vicinity of Washington Square Park and New York University campus
- Central West Village location along a luxury retail corridor and dense residential neighborhood
- Centrally located between the 14th St/6th Ave **F M 1 2 3 L** and West 4th St/Washington Sq **A B C D E F M** stations



By the Numbers

Retail Businesses

3,207

1 Mile Radius

Households

92,425

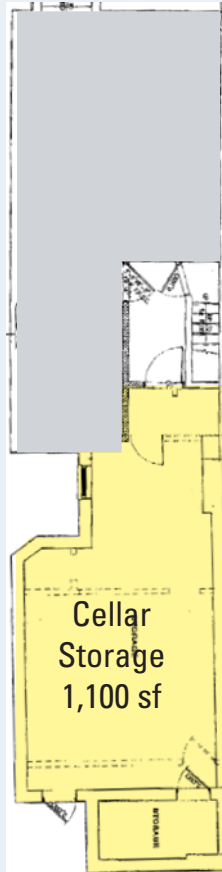
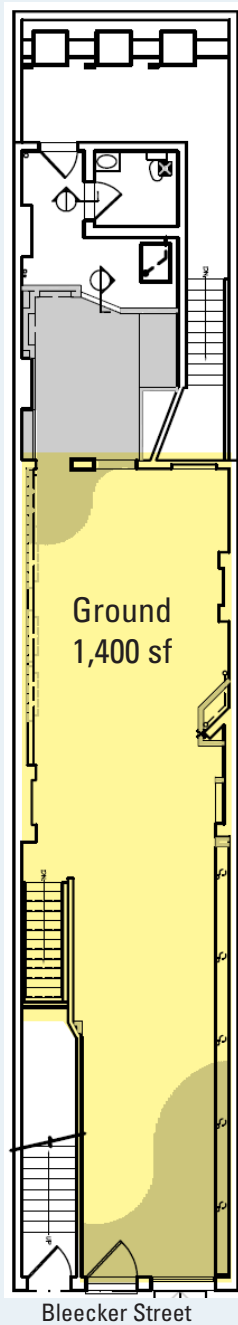
2021 est. - 1 Mile Radius

Household Income

\$170,838

2021 Average

Floor Plan

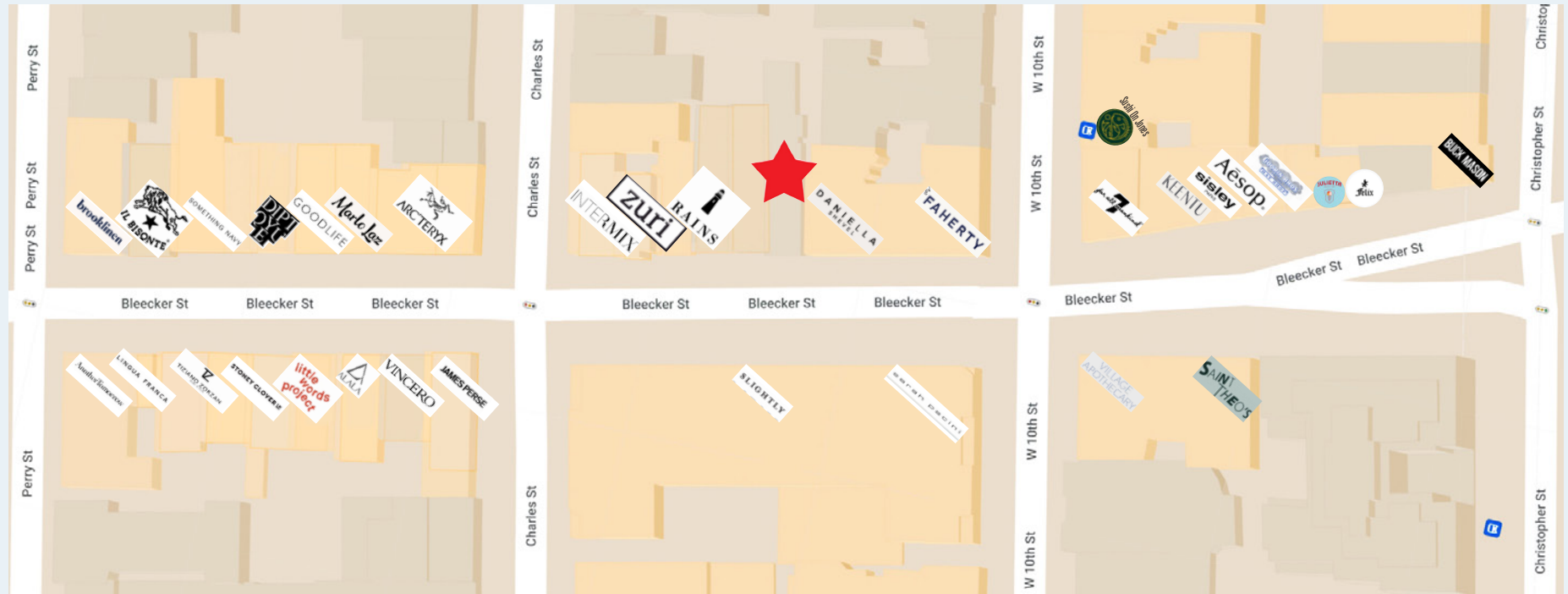


(for descriptive purposes only; not to scale.)

Existing Conditions



Area Map



Contact Exclusive Broker:

Mark Tergesen

Licensed Associate Real Estate Broker

212.400.9528

mt@absre.com

Cooper Katz

Licensed Real Estate Salesperson

646.439.2009

ckatz@absre.com

