

TROY CITY CENTER

888

WEST BIG BEAVER

TROY, MICHIGAN

RETAIL



CBRE

PROPERTY FEATURES

300,000 SF

Office

1,840

Parking Spaces

283 Luxury

Apartments

55,000 SF

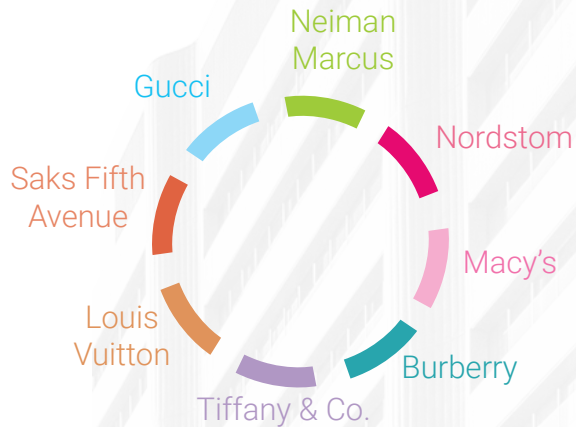
Retail

AREA FEATURES

SOMERSET COLLECTION

- + 1 Mile from Troy City Center
- + 180 Specialty Stores
- + 1,450,000 SF Retail
- + Sales \$1,000 SF
- + Luxury Shopping & Dining Destination

ANCHOR STORES



\$100,000

Average Household Income
1,3 & 5 Miles

25 Million SF

Office Space on
Big Beaver Corridor

1,400

Hotel Rooms In
Travel Area

Big Beaver Dining Corridor

- + The Capital Grille
- + Fogo De Chao
- + Morton's
- + Ruth's Chris
- + Yard House (Coming Soon)
- + J Alexander's
- + Eddie V's
- + Shake Shack
- + Season's 52 (Coming Soon)

117,000

Daytime workers
in 3 Miles

AERIAL MAP



MAJOR RETAILERS

- 1 Nordstrom
- 2 Saks Fifth Avenue
- 3 Neiman Marcus
- 4 Macy's
- 5 LA Fitness
- 6 REI
- 7 Nordstrom's Rack
- 8 The Container Store
- 9 Office Depot
- 10 Fresh Thyme Farmers Market

LANDMARKS

- 1 Somerset Collection North
- 2 Somerset Collection South
- 3 Troy Community Center
- 4 Children's Hospital

MAJOR OFFICE BUILDINGS

- 1 Sheffield Office Park IV (249,565 SF)
- 2 Sheffield Office Park III (153,377 SF)
- 3 Sheffield Office Park II (110,140 SF)
- 4 Sheffield Office Park I (149,134 SF)
- 5 Troy Place (142,853 SF)
- 6 Troy Place (163,344 SF)
- 7 Troy Place (163,390 SF)
- 8 Troy Place (261,233 SF)
- 9 Bank of America (422,155 SF)
- 10 Somerset Place Tower II (165,000 SF)
- 11 Somerset Place Tower I (215,000 SF)
- 12 Butterfield Office Center (111,941 SF)
- 13 Wilshire Plaza West (188,586 SF)
- 14 Kelly Services (180,500 SF)
- 15 Wilshire Plaza North (161,039 SF)
- 16 Wilshire Plaza (186,954 SF)
- 17 City Center (297,530 SF)
- 18 Huntington Bank (166,000 SF)
- 19 PNC Center (535,000 SF)
- 20 Woodcrest Office Park (119,000 SF)

- 21 Handleman Bldg (147,609 SF)
- 22 Kirts Bldg (100,000 SF)
- 23 Columbia Center I (254,978 SF)
- 24 Columbia Center II (251,620 SF)
- 25 Liberty Center (142,170 SF)
- 26 Liberty Center (149,976 SF)
- 27 PentaCentre Bldg D&E (283,826 SF)
- 28 The Centennial (330,495 SF)
- 29 PentaCentre Bldg C (152,211 SF)
- 30 PentaCentre Bldg B (146,639 SF)
- 31 PentaCentre Bldg A (149,239 SF)

HOTELS

- 1 Somerset Inn (250 Rooms)
- 2 Hilton Garden Inn (114 Rooms)
- 3 Hampton Inn & Suites (122 Rooms)
- 4 Candlewood Suites (118 Rooms)
- 5 Drury Inn & Suites (217 Rooms)
- 6 Detroit Marriott (350 Rooms)
- 7 Hawthorn Suites (152 Rooms)

AERIAL MAP



RETAILERS

- 1. AT&Ts
- 2. La-Z-Boy & Sprint
- 3. Gorman's

LANDMARKS

- 1. Troy Community Center
- 1. Children's Hospital

MAJOR OFFICE BUILDINGS

- | | | |
|---|---------------------------------------|-------------------------------------|
| 1. Butterfield Office Center (111,941 SF) | 6. City Center (297,530 SF) | 11. Kirts Bldg (100,000 SF) |
| 2. Wilshire Plaza West (188,586 SF) | 7. Huntington Bank (166,000 SF) | 12. Columbia Center I (254,978 SF) |
| 3. Kelly Services (180,500 SF) | 8. PNC Center (535,000 SF) | 13. Columbia Center II (251,620 SF) |
| 4. Wilshire Plaza North (161,039 SF) | 9. Woodcrest Office Park (119,000 SF) | 14. Liberty Center (142,170 SF) |
| 5. Wilshire Plaza (186,954 SF) | 10. Handleman Bldg (147,609 SF) | 15. Liberty Center (149,976 SF) |

HOTELS

- 1. Hilton Garden Inn (114 Rooms)
- 2. Hampton Inn & Suites (122 Rooms)
- 3. Drury Inn & Suites (217 Rooms)
- 4. Detroit Marriott (350 Rooms)

PHOTO GALLERY



PHOTO GALLERY



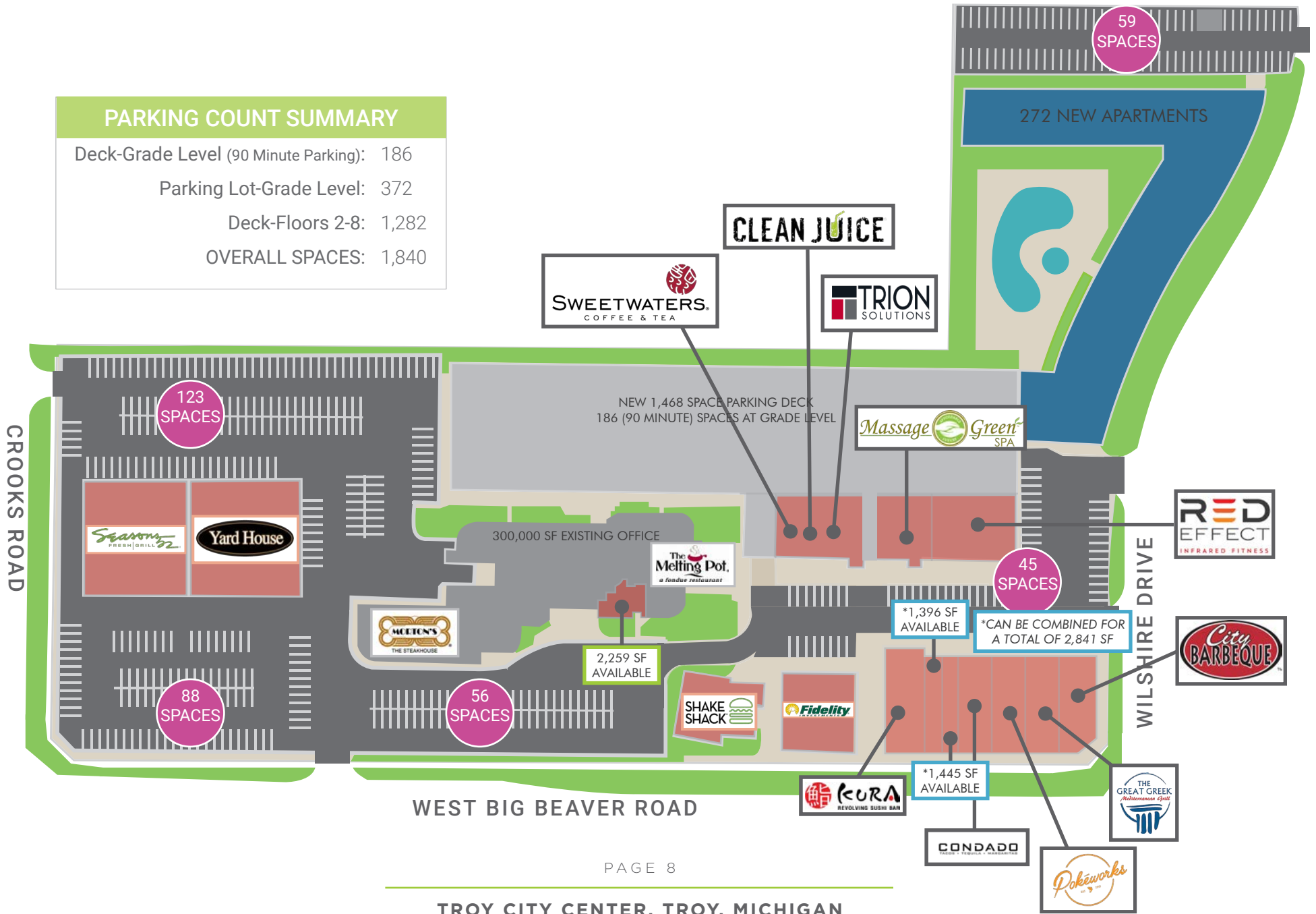
PHOTO GALLERY



S I T E P L A N

PARKING COUNT SUMMARY

Deck-Grade Level (90 Minute Parking): 186
 Parking Lot-Grade Level: 372
 Deck-Floors 2-8: 1,282
OVERALL SPACES: 1,840

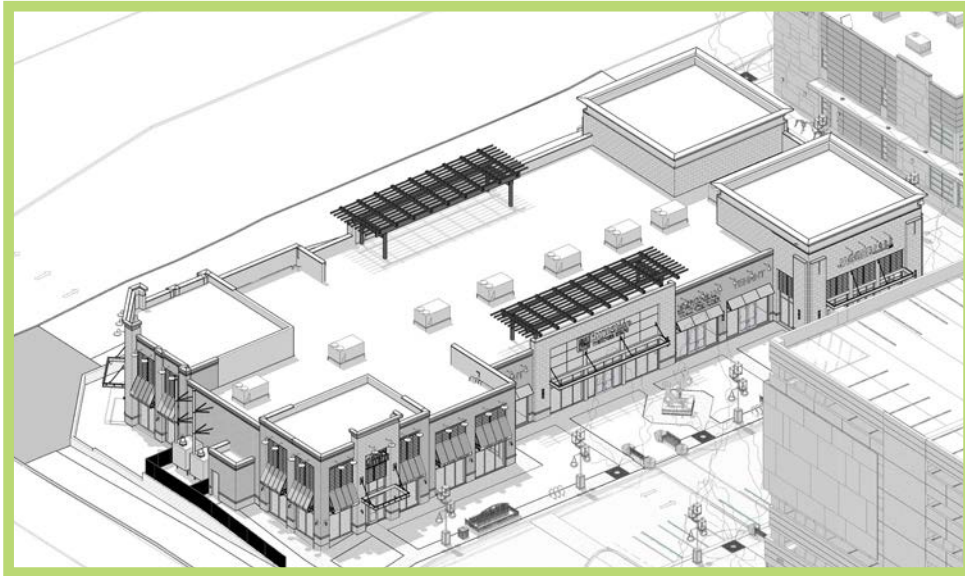


PAD RETAIL - NORTH ELEVATION



Suites can be combined for a total of 2,841 SF

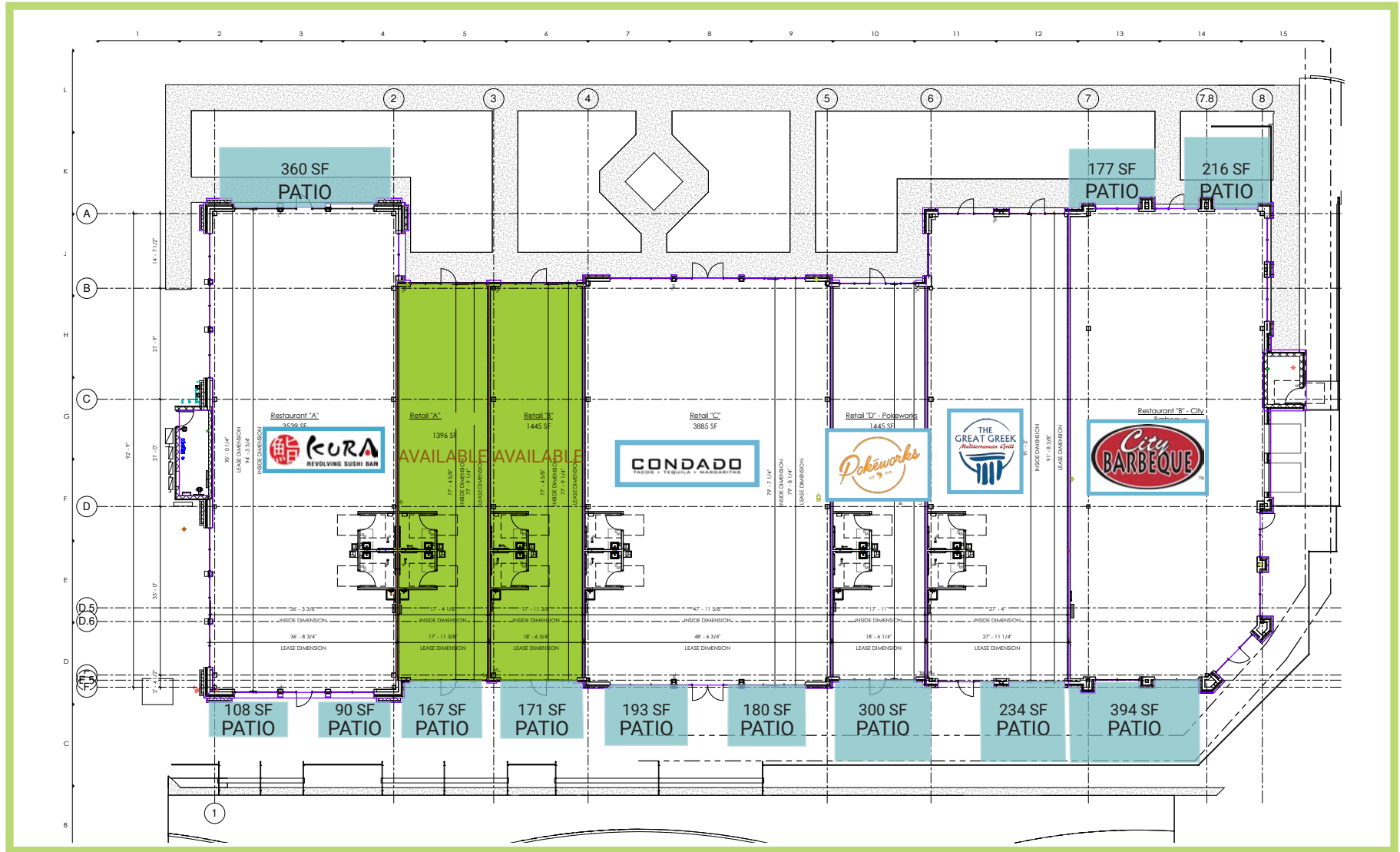
P A D R E T A I L - I S O M E T R I C S



P A D R E T A I L P H O T O S

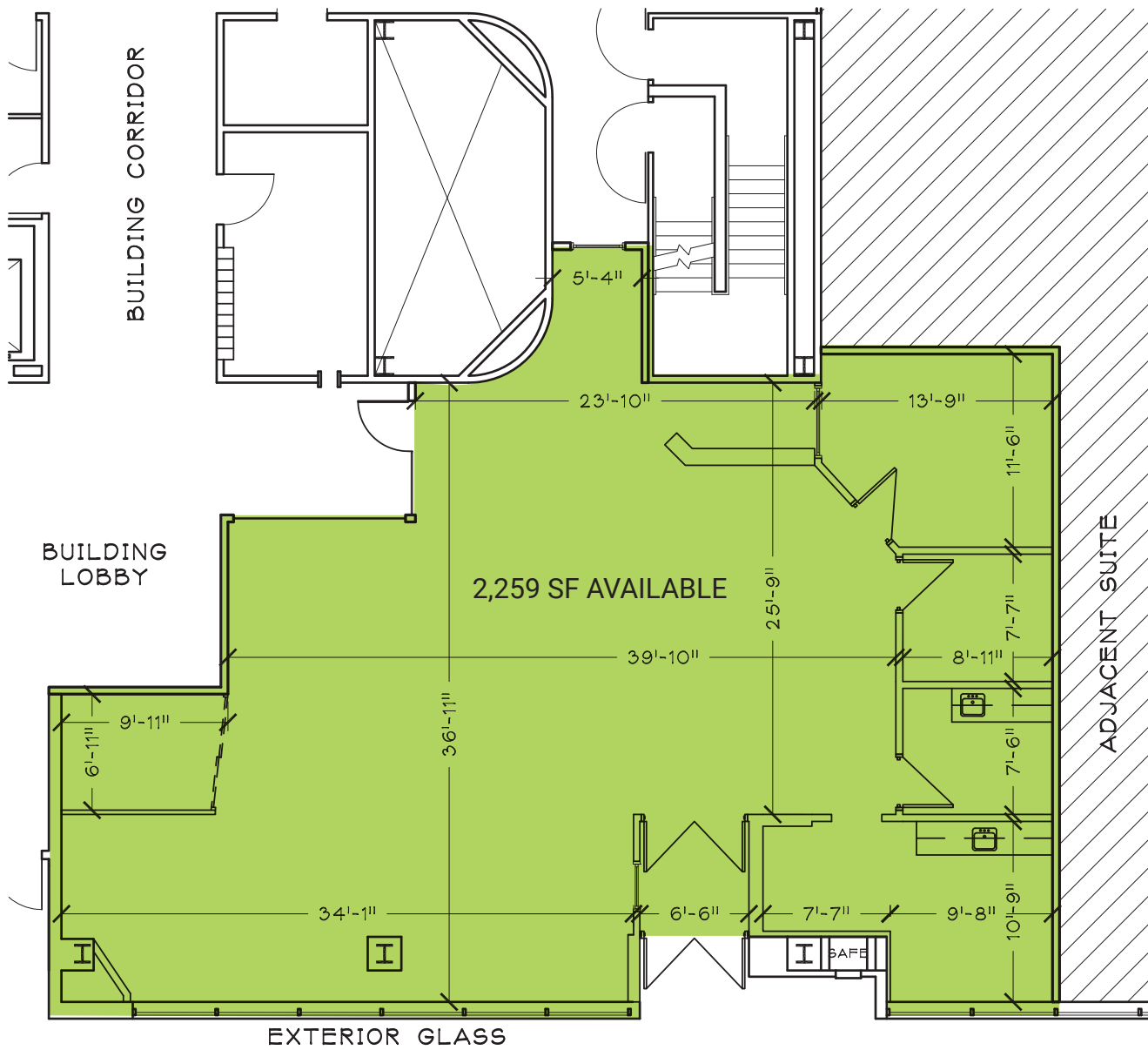


PAD RETAIL - FLOOR PLAN



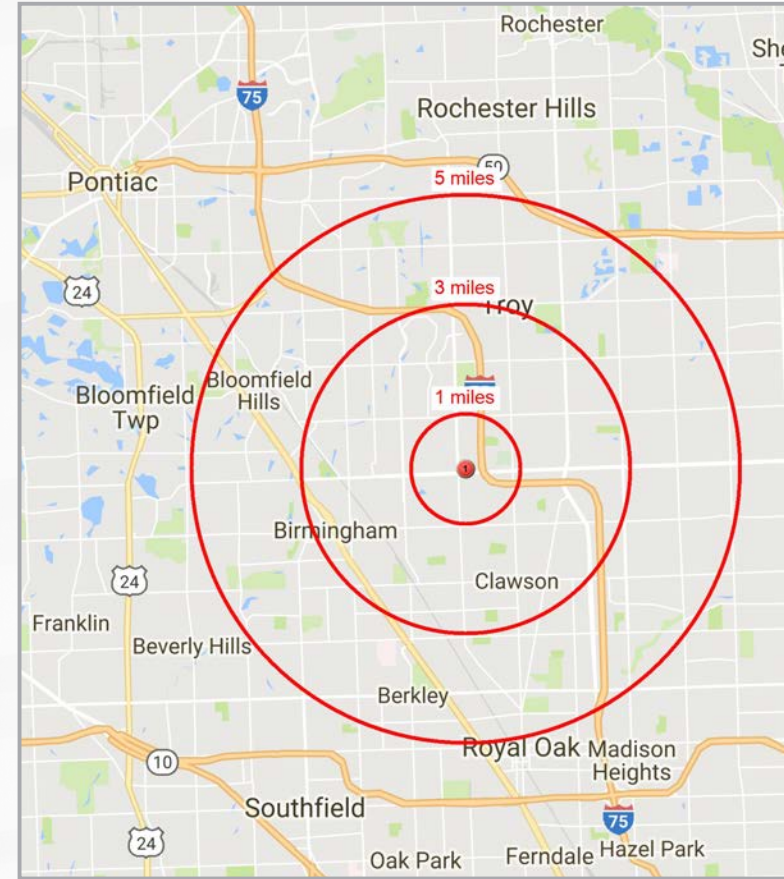
Suites can be combined for a total of 2,841 SF

TROY CITY CENTER RETAIL | FLOOR PLAN



2019 DEMOGRAPHICS

	1 MILE	3 MILES	5 MILES
POPULATION			
Population	8,683	83,278	246,281
AGE			
Median Age	37.9	42.6	43.3
HOUSEHOLD INCOME			
Median Household Income	\$83,577	\$89,536	\$88,642
Average Household Income	\$101,739	\$122,779	\$123,205
CLASS OF WORKER			
White Collar	4,008 - 80.5%	37,934 - 79.9%	106,669 - 77.3%
DAYTIME POPULATION			
Daytime Population	31,663	160,909	319,432
Daytime Workers	27,854 - 88.0%	124,204 - 77.2%	208,624 - 65.3%
Daytime Residents	3,809 - 12.0%	36,705 - 22.8%	110,808 - 34.7%



CONTACT US

MATT CROSWELL

Senior Associate
+1 248 351 2084
matt.croswell@cbre.com

SCOTT YOUNG

First Vice President
+1 248 936 6832
scott.young@cbre.com

ASHLEY YOUNG

Senior Associate
+1 248 353 5400
ashley.young@cbre.com



© 2020 CBRE, Inc. All rights reserved. This information has been obtained from sources believed reliable, but has not been verified for accuracy or completeness. Any projections, opinions, or estimates are subject to uncertainty. The information may not represent the current or future performance of the property. You and your advisors should conduct a careful, independent investigation of the property and verify all information. Any reliance on this information is solely at your own risk. CBRE and the CBRE logo are service marks of CBRE, Inc. and/or its affiliated or related companies in the United States and other countries. All other marks displayed on this document are the property of their respective owners. Photos herein are the property of their respective owners and use of these images without the express written consent of the owner is prohibited.