

# 3790 PARADISE ROAD

3790 Paradise Road | Las Vegas, NV 89119



## PROPERTY DETAILS

- Building features include on-site security, mailing services, and a private secured parking garage.
- Central Location in close proximity to Harry Reid International Airport, The Las Vegas Strip, the Las Vegas Convention Center and the University of Nevada Las Vegas Campus.

### BRUCE FOLLMER

President / Broker | Lic.# B.0018023

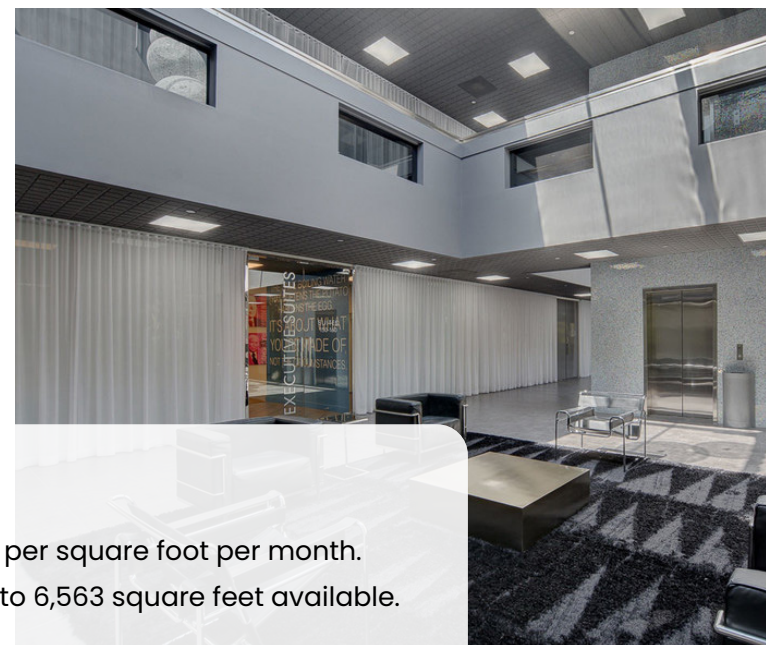
### JUSTIN MICHAELS

Vice President | Lic.# S.0068221

📍 1129 S. Casino Center Blvd. | Las Vegas, NV 89104 📞 702.347.7777 🌐 [mfrenv.com](http://mfrenv.com)



Disclaimer: The information above has been obtained from sources believed reliable. While we do not doubt its accuracy, we have not verified it and make no guarantee, warranty or representation about it. It is your responsibility to independently confirm its accuracy and completeness. Any projections, opinions, assumptions or estimates used are for example only and do not represent the current or future performance of the property. The value of this transaction to you depends on tax and other factors which should be evaluated by your tax, financial and legal advisors. You and your advisors should conduct a careful, independent investigation of the property to determine for your satisfaction the suitability of the property for your needs. This information has been prepared exclusively for the clients of Michaels Follmer Real Estate (MFRE) and is confidential. It is the property of MFRE, and reproduction of any portion without the written consent of MFRE is strictly prohibited.



**PROPERTY DETAILS**

- Second Generation General Office Space ready for Immediate Occupancy.
- Rental Rate \$2.25 per square foot per month.
- 1,456 square feet to 6,563 square feet available.

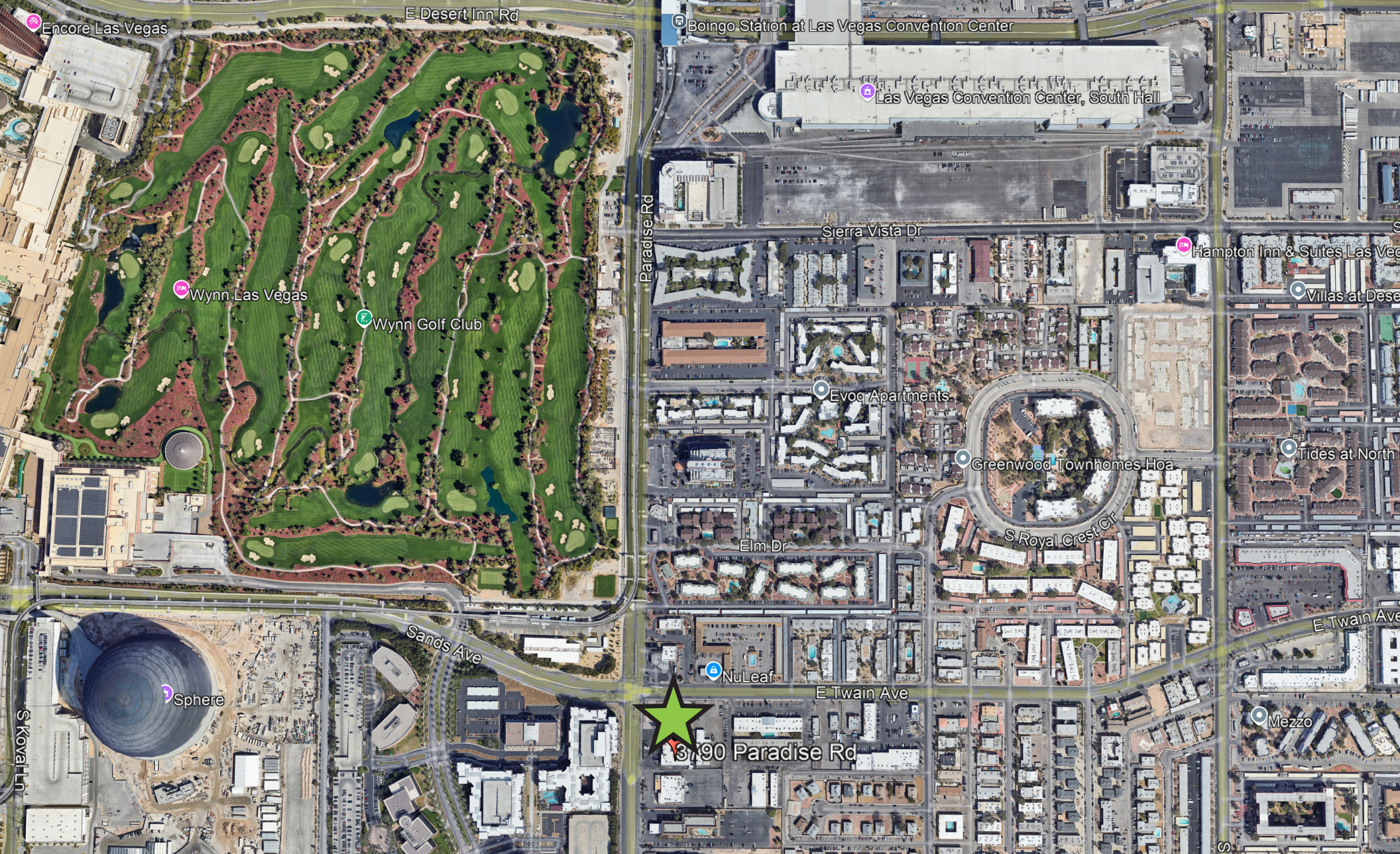
**BRUCE FOLLMER**  
 President / Broker | Lic.# B.0018023

**JUSTIN MICHAELS**  
 Vice President | Lic.# S.0068221

📍 1129 S. Casino Center Blvd. | Las Vegas, NV 89104 📞 702.347.7777 🌐 [mfrenv.com](http://mfrenv.com)



Disclaimer: The information above has been obtained from sources believed reliable. While we do not doubt its accuracy, we have not verified it and make no guarantee, warranty or representation about it. It is your responsibility to independently confirm its accuracy and completeness. Any projections, opinions, assumptions or estimates used are for example only and do not represent the current or future performance of the property. The value of this transaction to you depends on tax and other factors which should be evaluated by your tax, financial and legal advisors. You and your advisors should conduct a careful, independent investigation of the property to determine for your satisfaction the suitability of the property for your needs. This information has been prepared exclusively for the clients of Michaels Follmer Real Estate (MFRE) and is confidential. It is the property of MFRE, and reproduction of any portion without the written consent of MFRE is strictly prohibited.



**BRUCE FOLLMER**  
President / Broker | Lic.# B.0018023

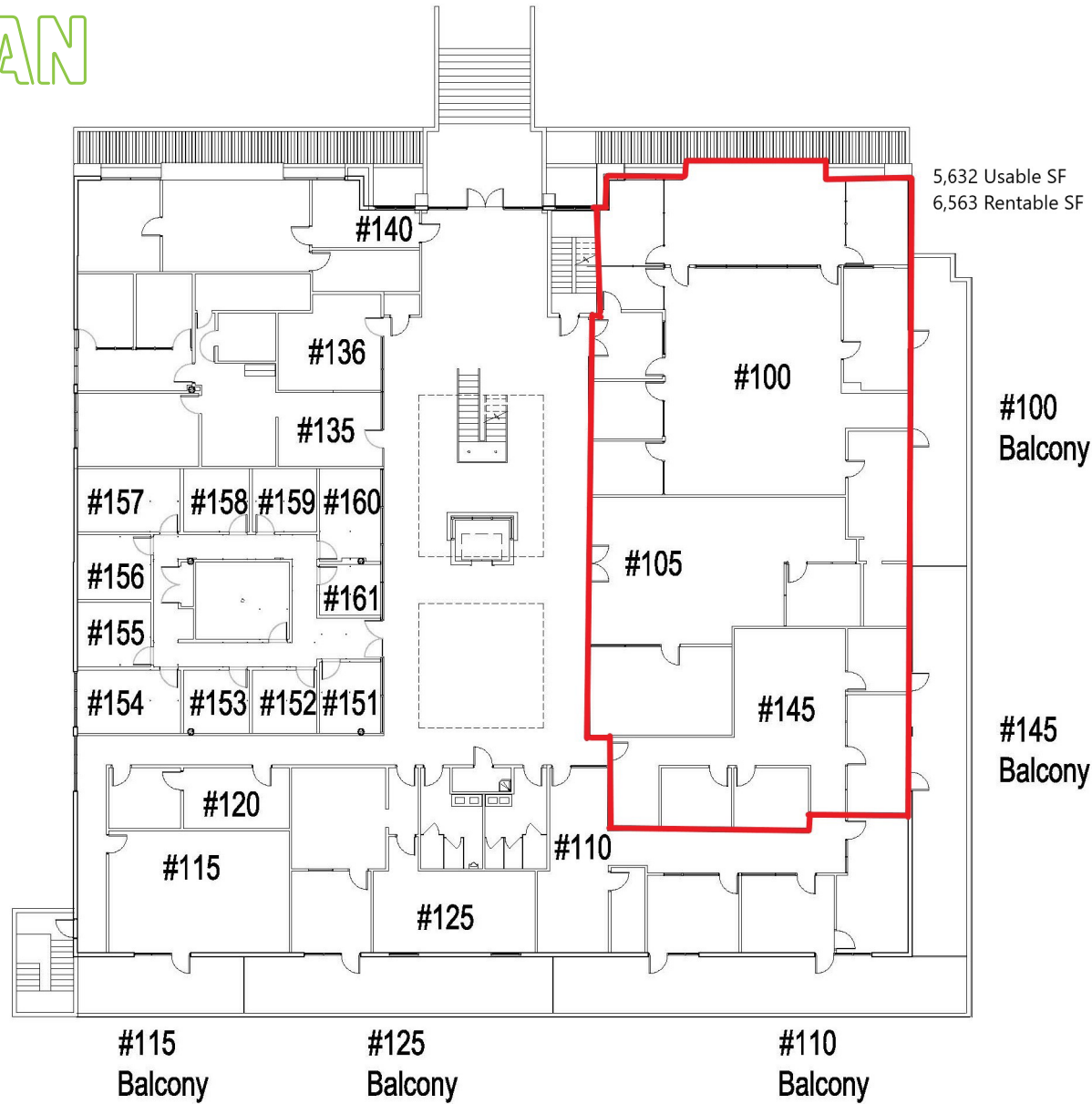
**JUSTIN MICHAELS**  
Vice President | Lic.# S.0068221



📍 1129 S. Casino Center Blvd. | Las Vegas, NV 89104 📞 702.347.7777 🌐 mfvn.com

Disclaimer: The information above has been obtained from sources believed reliable. While we do not doubt its accuracy, we have not verified it and make no guarantee, warranty or representation about it. It is your responsibility to independently confirm its accuracy and completeness. Any projections, opinions, assumptions or estimates used are for example only and do not represent the current or future performance of the property. The value of this transaction to you depends on tax and other factors which should be evaluated by your tax, financial and legal advisors. You and your advisors should conduct a careful, independent investigation of the property to determine for your satisfaction the suitability of the property for your needs. This information has been prepared exclusively for the clients of Michaels Follmer Real Estate (MFRE) and is confidential. It is the property of MFRE, and reproduction of any portion without the written consent of MFRE is strictly prohibited.

# FLOOR PLAN



**BRUCE FOLLMER**

President / Broker | Lic.# B.0018023

**JUSTIN MICHAELS**

Vice President | Lic.# S.0068221

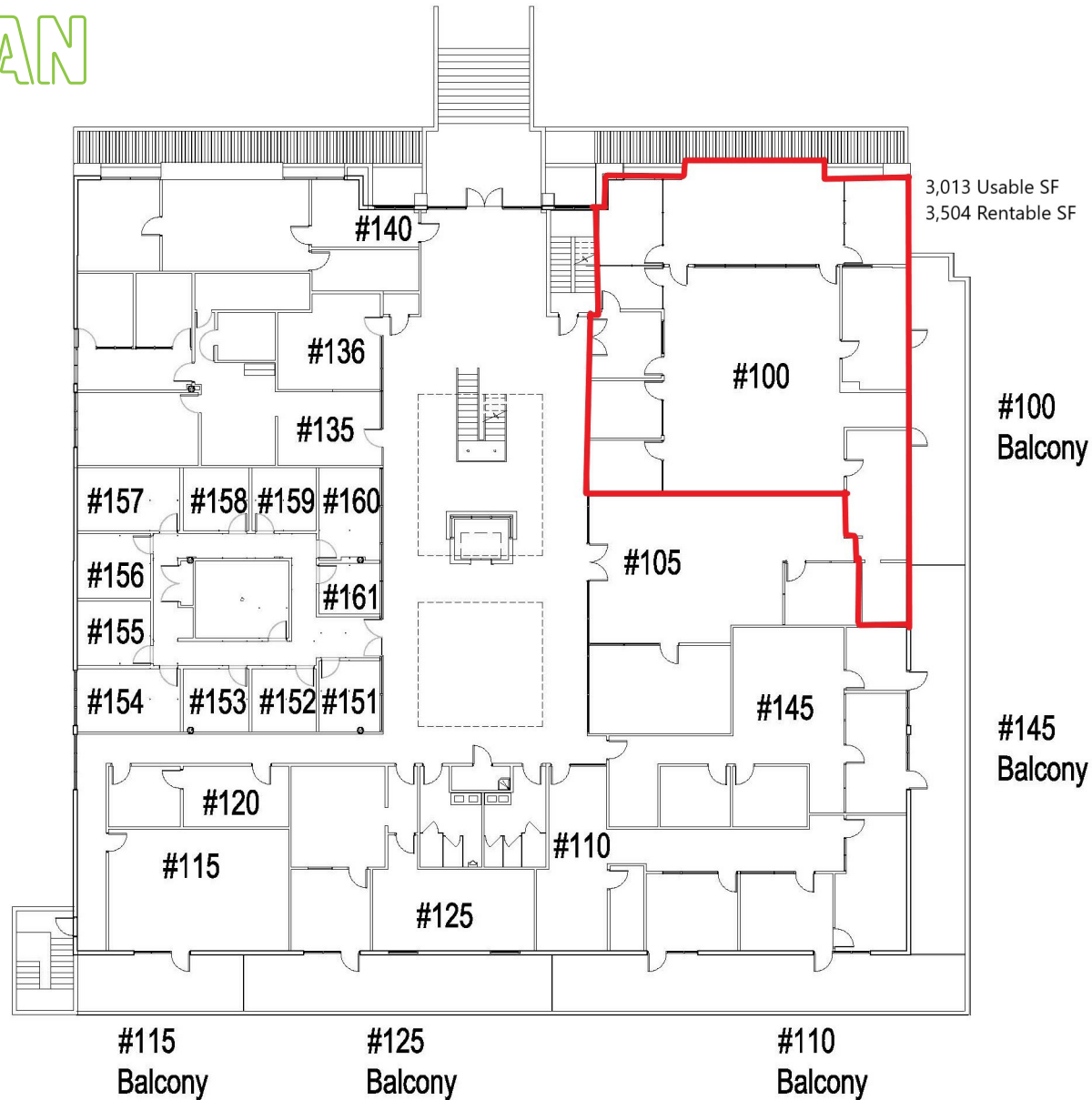
📍 1129 S. Casino Center Blvd. | Las Vegas, NV 89104 📞 702.347.7777 🌐 [mfrenv.com](http://mfrenv.com)



Disclaimer: The information above has been obtained from sources believed reliable. While we do not doubt its accuracy, we have not verified it and make no guarantee, warranty or representation about it. It is your responsibility to independently confirm its accuracy and completeness. Any projections, opinions, assumptions or estimates used are for example only and do not represent the current or future performance of the property. The value of this transaction to you depends on tax and other factors which should be evaluated by your tax, financial and legal advisors. You and your advisors should conduct a careful, independent investigation of the property to determine for your satisfaction the suitability of the property for your needs. This information has been prepared exclusively for the clients of Michaels Follmer Real Estate (MFRE) and is confidential. It is the property of MFRE, and reproduction of any portion without the written consent of MFRE is strictly prohibited.

# FLOOR PLAN

## Suite #100



**BRUCE FOLLMER**

President / Broker | Lic.# B.0018023

**JUSTIN MICHAELS**

Vice President | Lic.# S.0068221

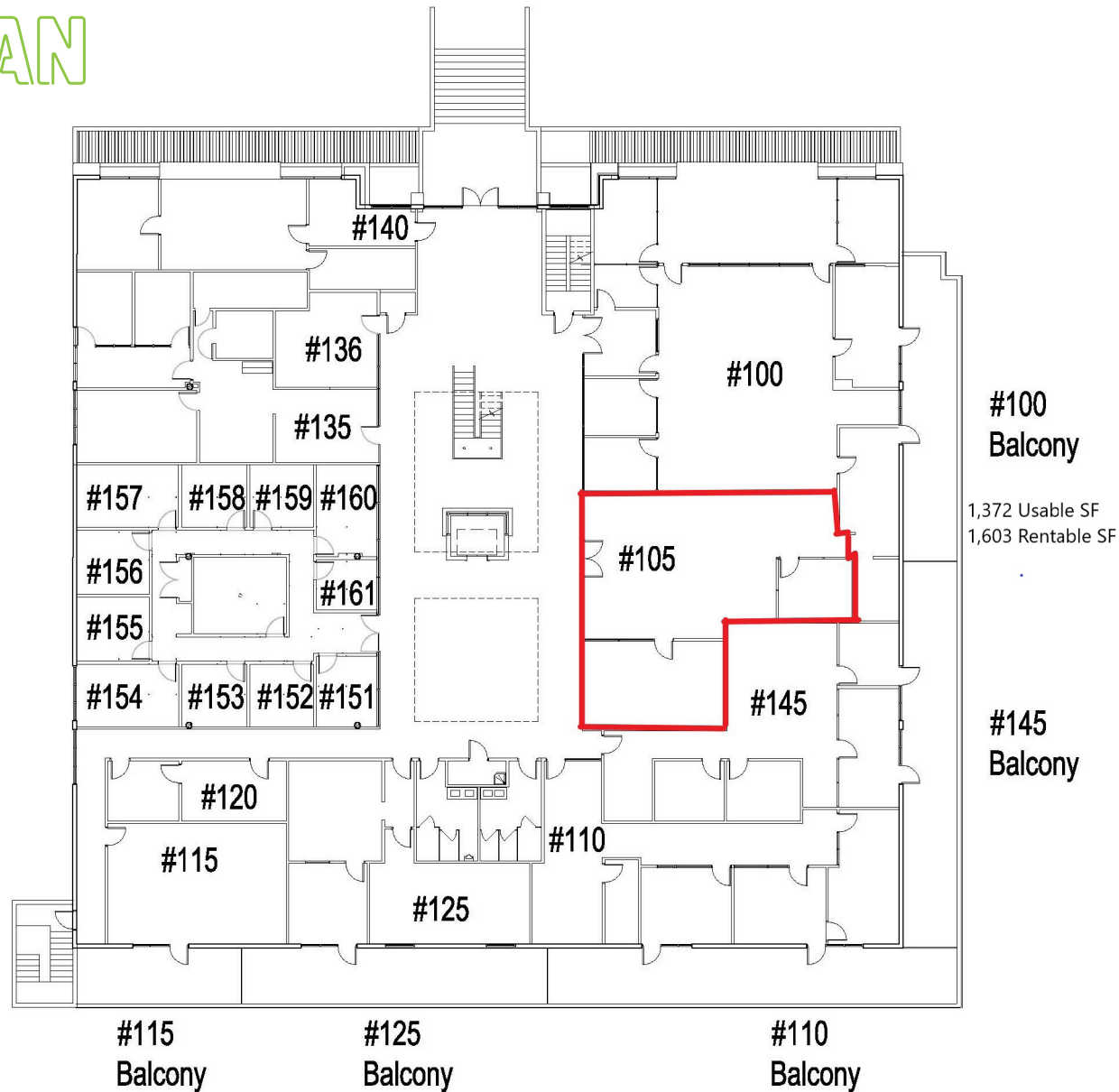
📍 1129 S. Casino Center Blvd. | Las Vegas, NV 89104 📞 702.347.7777 🌐 [mfrenv.com](http://mfrenv.com)



Disclaimer: The information above has been obtained from sources believed reliable. While we do not doubt its accuracy, we have not verified it and make no guarantee, warranty or representation about it. It is your responsibility to independently confirm its accuracy and completeness. Any projections, opinions, assumptions or estimates used are for example only and do not represent the current or future performance of the property. The value of this transaction to you depends on tax and other factors which should be evaluated by your tax, financial and legal advisors. You and your advisors should conduct a careful, independent investigation of the property to determine for your satisfaction the suitability of the property for your needs. This information has been prepared exclusively for the clients of Michaels Follmer Real Estate (MFRE) and is confidential. It is the property of MFRE, and reproduction of any portion without the written consent of MFRE is strictly prohibited.

# FLOOR PLAN

## Suite #105



**BRUCE FOLLMER**

President / Broker | Lic.# B.0018023

**JUSTIN MICHAELS**

Vice President | Lic.# S.0068221

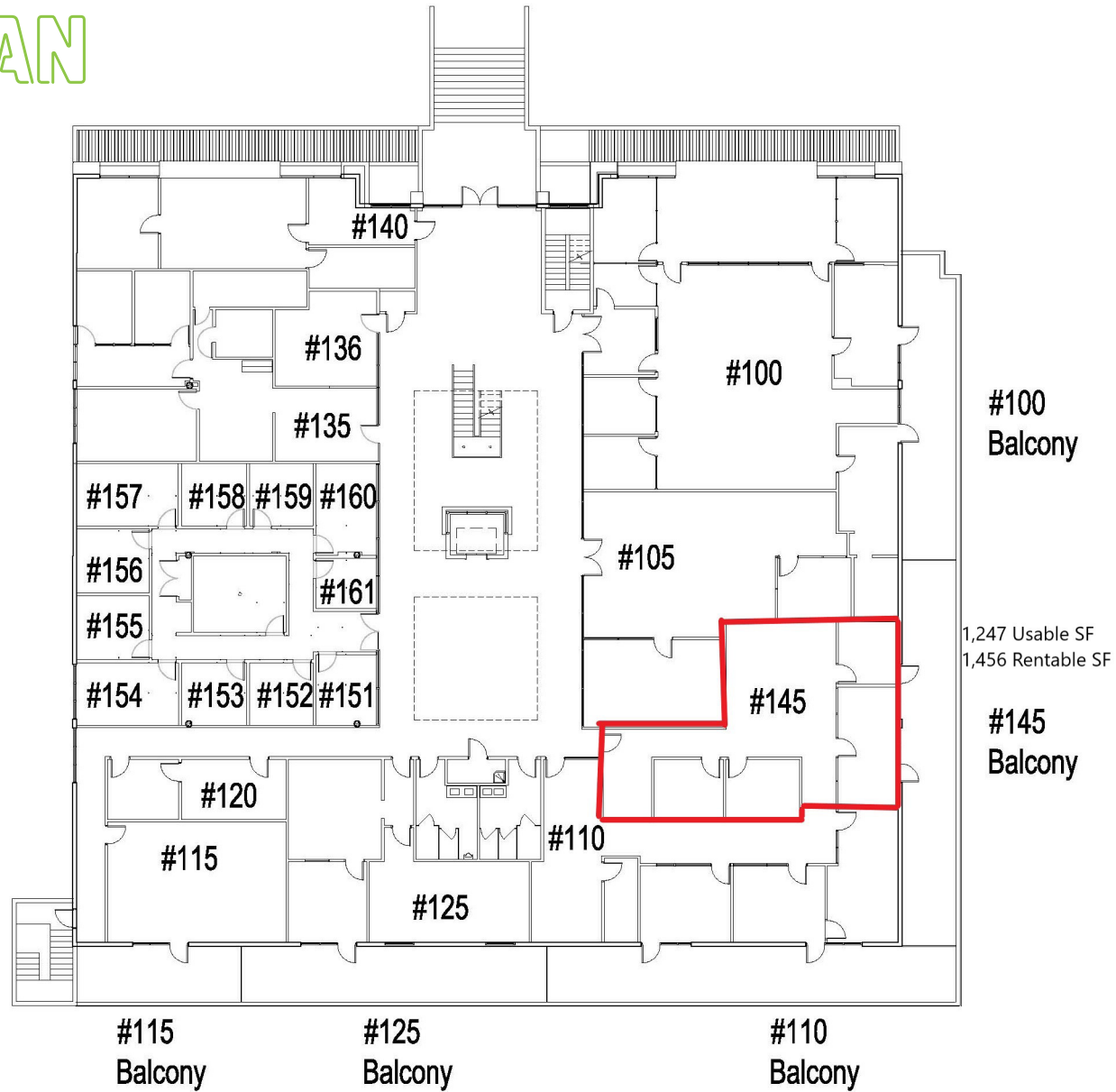
📍 1129 S. Casino Center Blvd. | Las Vegas, NV 89104 📞 702.347.7777 🌐 [mfrenv.com](http://mfrenv.com)



Disclaimer: The information above has been obtained from sources believed reliable. While we do not doubt its accuracy, we have not verified it and make no guarantee, warranty or representation about it. It is your responsibility to independently confirm its accuracy and completeness. Any projections, opinions, assumptions or estimates used are for example only and do not represent the current or future performance of the property. The value of this transaction to you depends on tax and other factors which should be evaluated by your tax, financial and legal advisors. You and your advisors should conduct a careful, independent investigation of the property to determine for your satisfaction the suitability of the property for your needs. This information has been prepared exclusively for the clients of Michaels Follmer Real Estate (MFRE) and is confidential. It is the property of MFRE, and reproduction of any portion without the written consent of MFRE is strictly prohibited.

# FLOOR PLAN

## Suite #145



**BRUCE FOLLMER**

President / Broker | Lic.# B.0018023

**JUSTIN MICHAELS**

Vice President | Lic.# S.0068221

📍 1129 S. Casino Center Blvd. | Las Vegas, NV 89104 📞 702.347.7777 🌐 [mfrenv.com](http://mfrenv.com)



Disclaimer: The information above has been obtained from sources believed reliable. While we do not doubt its accuracy, we have not verified it and make no guarantee, warranty or representation about it. It is your responsibility to independently confirm its accuracy and completeness. Any projections, opinions, assumptions or estimates used are for example only and do not represent the current or future performance of the property. The value of this transaction to you depends on tax and other factors which should be evaluated by your tax, financial and legal advisors. You and your advisors should conduct a careful, independent investigation of the property to determine for your satisfaction the suitability of the property for your needs. This information has been prepared exclusively for the clients of Michaels Follmer Real Estate (MFRE) and is confidential. It is the property of MFRE, and reproduction of any portion without the written consent of MFRE is strictly prohibited.