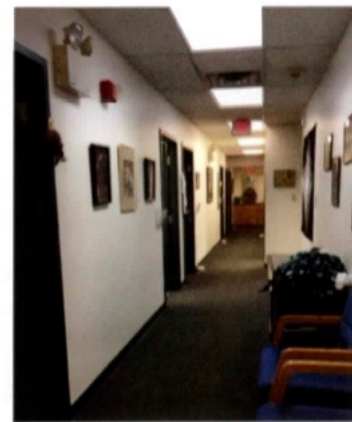
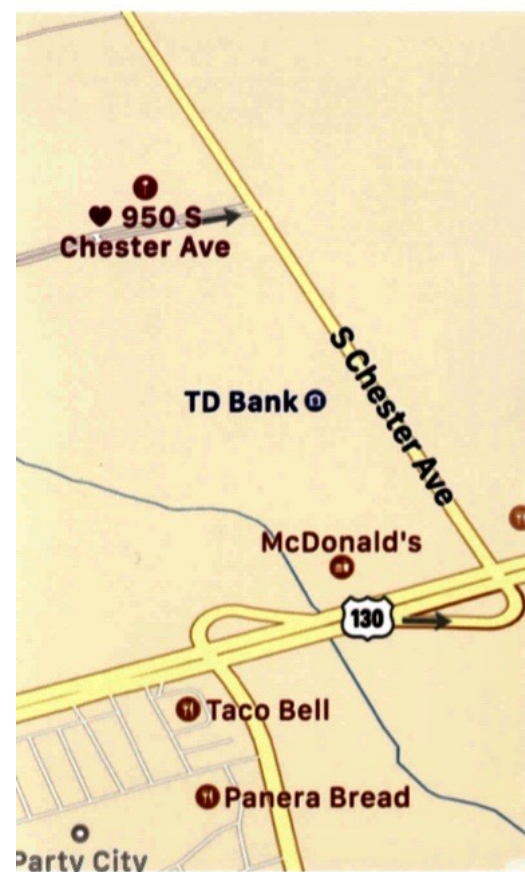
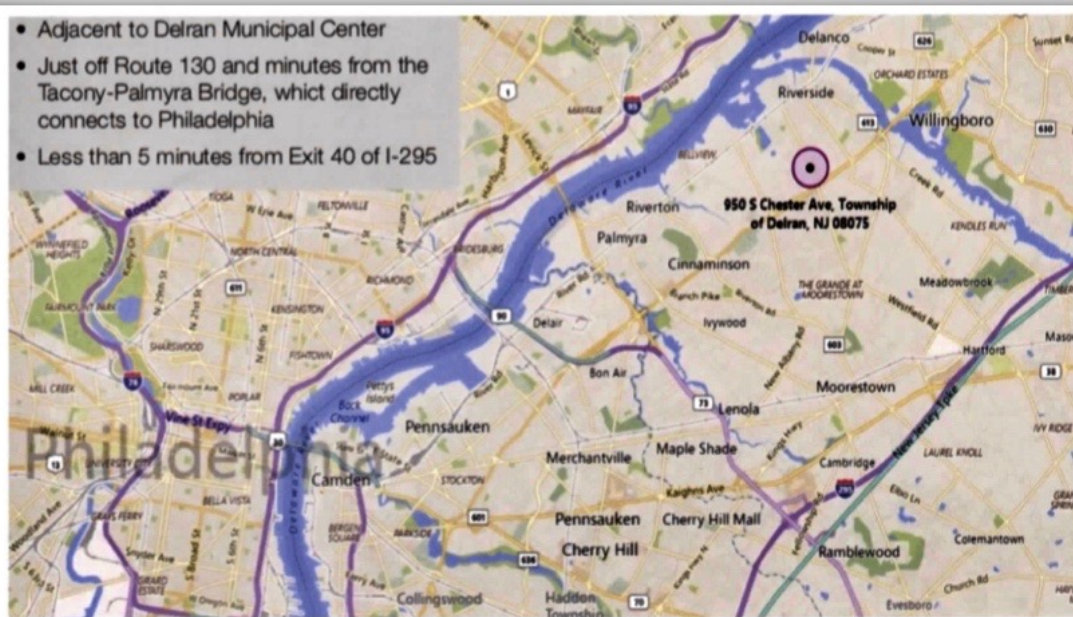


## On-site Tenants:

Actega North America,  
Certified Dermatology,  
Jefferson Health, and  
Union Financial

- Adjacent to Delran Municipal Center
- Just off Route 130 and minutes from the Tacony-Palmyra Bridge, which directly connects to Philadelphia
- Less than 5 minutes from Exit 40 of I-295



Chester Avenue Professional Center is perfectly located with high visibility for signage. Sitting on a gorgeous 20,700 square-foot building site with 7,400 SF of available space left which can be divided to fit your needs. Direct access to highways, separate HVAC systems, separate gas / electric meters. Close to all schools and the best shopping centers on route 130. A true one of a kind!



Gill Roy  
Cell (732) 754-6278  
Office (732) 540-8177

**DMP CAPITAL**  
P.O. Box 412  
Iselin, NJ 08830  
dmpcapital@gmail.com