

OFFICE/WAREHOUSE & LAND FOR SALE or LEASE

2879-2881 Shannon-Oxmoor Road ♦ Birmingham, AL ♦ 35211 ♦ Jefferson County



8,712 SF Office Building / 18,000 SF Warehouse / 7.04 +/- acres | SALE PRICE: \$3,500,000 | LEASE RATE: \$20,000/MO NNN

Mark Dinan, MBA, CCIM

(o) 205-980-3434

(c) 205-243-3434

markdinan@bellsouth.net

MARK DINAN
Commercial & Investment Real Estate



*All Information furnished regarding property sale, rental, or financing is from sources deemed reliable, but is not guaranteed.

PROPERTY DETAILS

2879-2881 Shannon-Oxmoor Road ♦ Birmingham, AL ♦ 35211 ♦ Jefferson County

- ♦ 18,000 +/- SF Warehouse
- ♦ 8,712+/- SF Office Building
- ♦ 3,500 +/- SF Storage Building.
- ♦ 7.04 +/- Acres. Fenced.
- ♦ Built: 1994
- ♦ Zoned I-3 City of Birmingham
- ♦ High quality construction.
- ♦ Attractive, Office building features architectural stone and metal roof. Interior has reception area large private offices, kitchen, restrooms, open and large conference room and lots of natural light.
- ♦ Warehouse with new addition has 2 dock high and 11 large drive in doors, 12-24' ceilings, large training area, breakroom, crane and room to expand.
- ♦ Rare Availability of this property type in desirable area.
- ♦ Call for more details and showing.



Mark Dinan, MBA, CCIM

(o) 205-980-3434

(c) 205-243-3434

markdinan@bellsouth.net

MARK DINAN
Commercial & Investment Real Estate



*All Information furnished regarding property sale, rental, or financing is from sources deemed reliable, but is not guaranteed.

WAREHOUSE

2879-2881 Shannon-Oxmoor Road ♦ Birmingham, AL ♦ 35211 ♦ Jefferson County



Mark Dinan, MBA, CCIM

(o) 205-980-3434

(c) 205-243-3434

markdinan@bellsouth.net

MARK DINAN
Commercial & Investment Real Estate



*All Information furnished regarding property sale, rental, or financing is from sources deemed reliable, but is not guaranteed.

OFFICE BUILDING

2879-2881 Shannon-Oxmoor Road ♦ Birmingham, AL ♦ 35211 ♦ Jefferson County



Mark Dinan, MBA, CCIM

(c) 205-980-3434

(c) 205-243-3434

markdinan@bellsouth.net

MARK DINAN
Commercial & Investment Real Estate



*All Information furnished regarding property sale, rental, or financing is from sources deemed reliable, but is not guaranteed.

OFFICE PHOTOS

2879-2881 Shannon-Oxmoor Road ♦ Birmingham, AL ♦ 35211 ♦ Jefferson County



Mark Dinan, MBA, CCIM

(o) 205-980-3434

(c) 205-243-3434

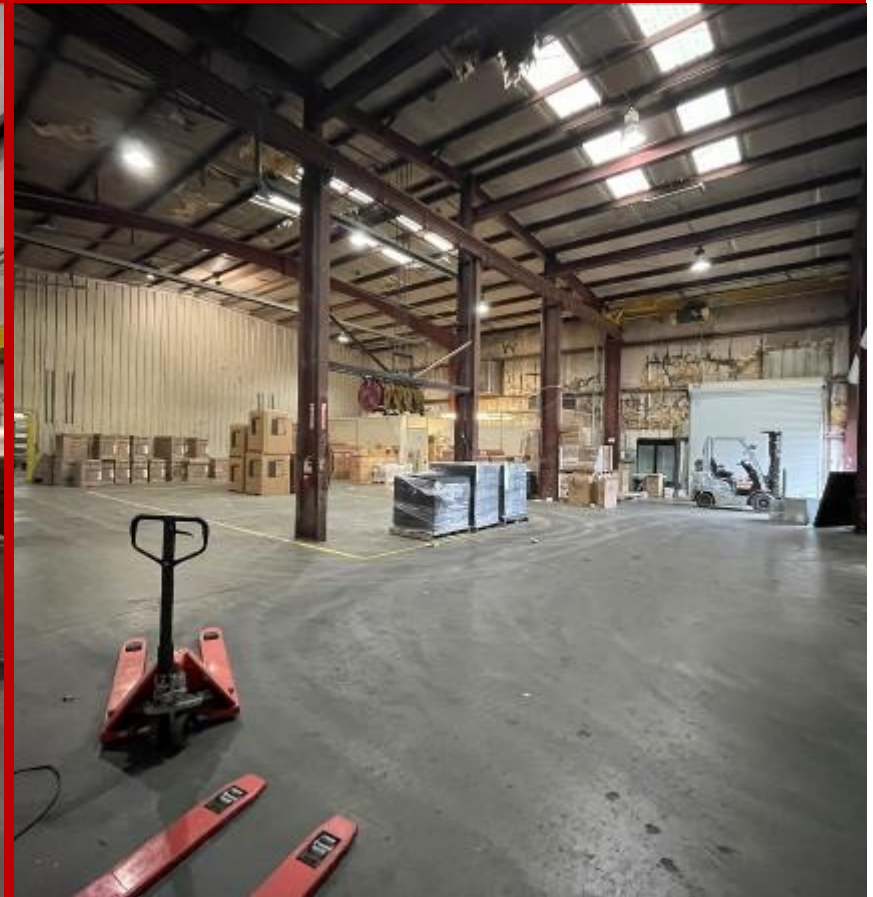
markdinan@bellsouth.net



*All Information furnished regarding property sale, rental, or financing is from sources deemed reliable, but is not guaranteed.

WAREHOUSE PHOTOS

2879-2881 Shannon-Oxmoor Road ♦ Birmingham, AL ♦ 35211 ♦ Jefferson County



Mark Dinan, MBA, CCIM

(o) 205-980-3434

(c) 205-243-3434

markdinan@bellsouth.net

MARK DINAN
Commercial & Investment Real Estate



*All Information furnished regarding property sale, rental, or financing is from sources deemed reliable, but is not guaranteed.

PLAT MAP

2879-2881 Shannon-Oxmoor Road ♦ Birmingham, AL ♦ 35211 ♦ Jefferson County



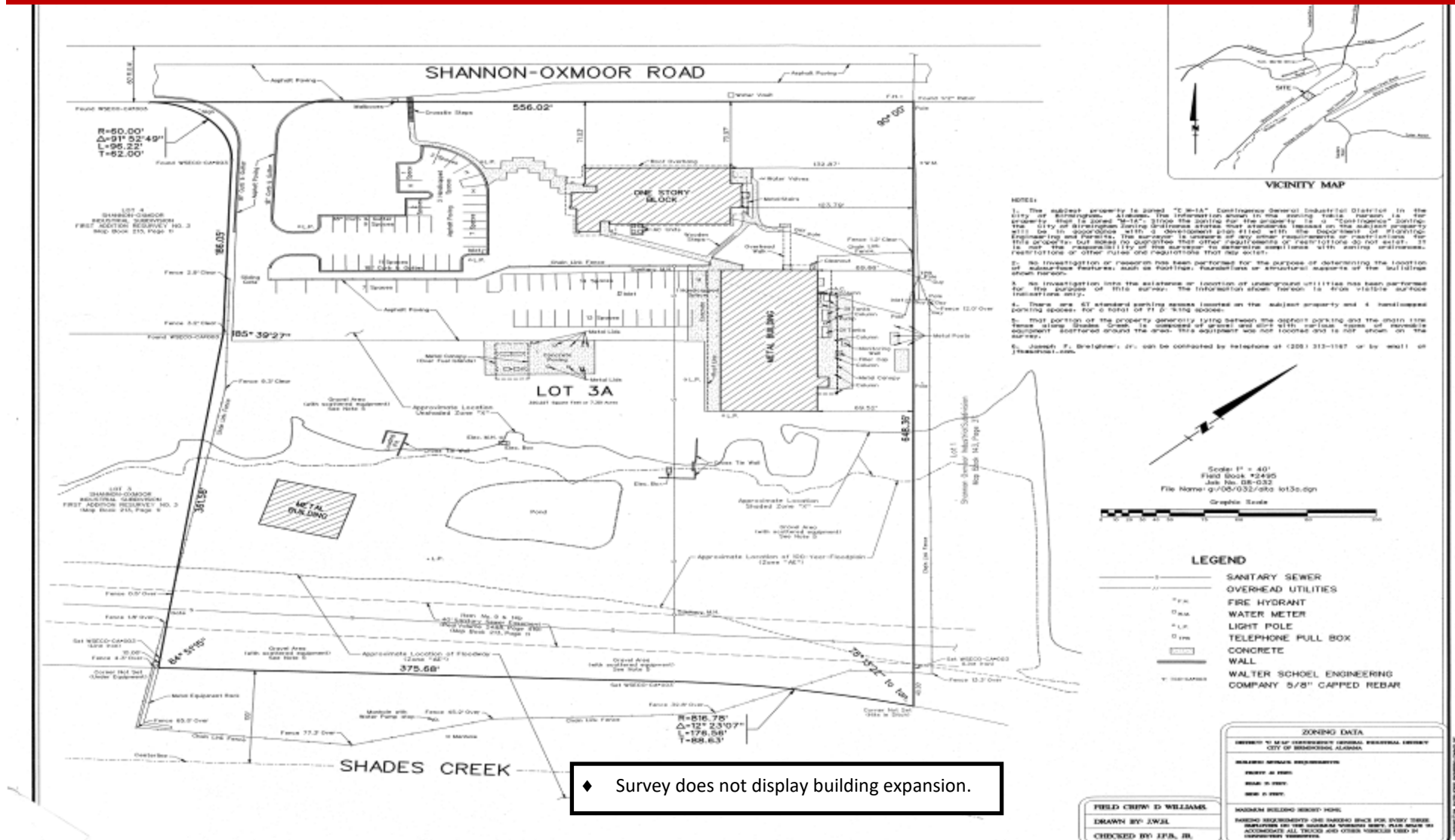
MARK DINAN
Commercial & Investment Real Estate

205-980-3434

*All Information furnished regarding property sale, rental, or financing is from sources deemed reliable, but is not guaranteed.

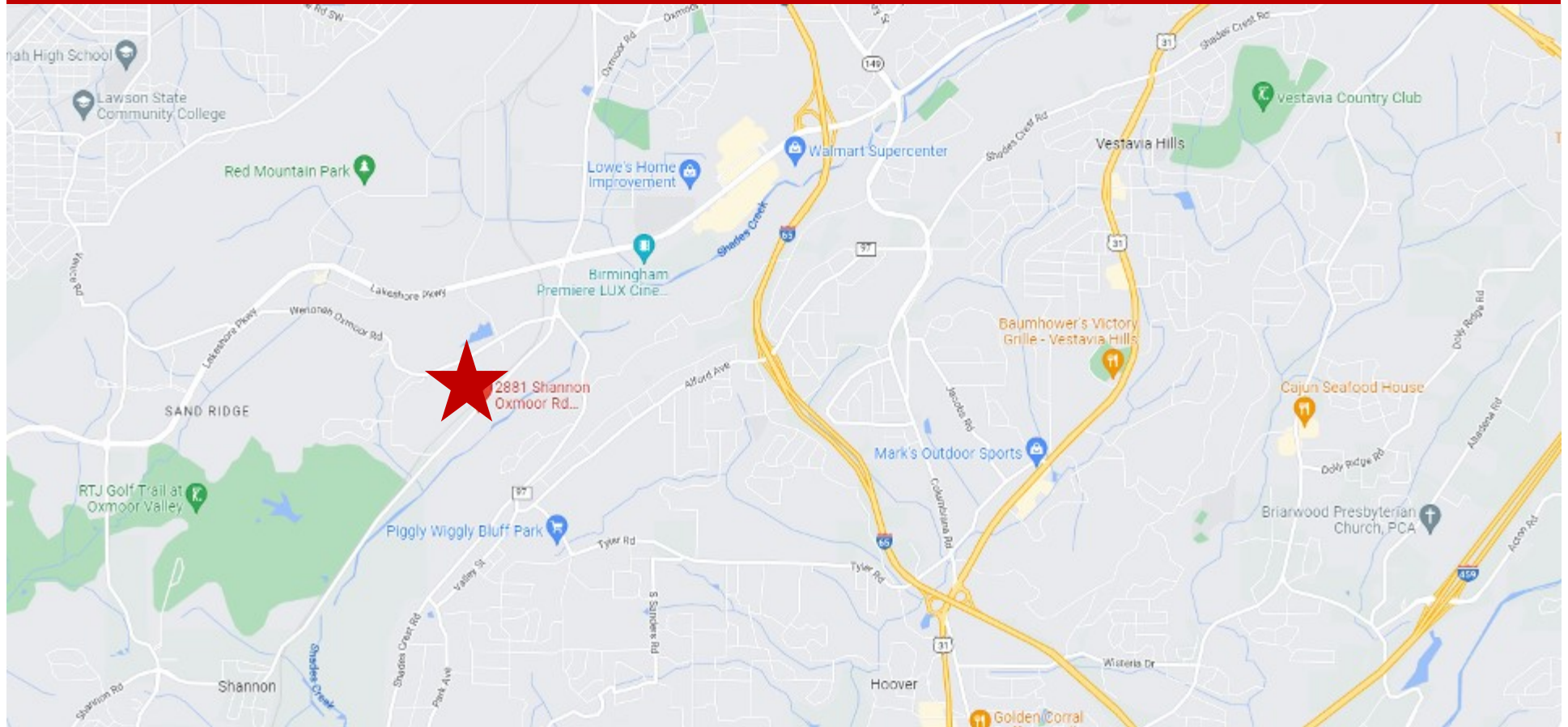
SURVEY

2879-2881 Shannon-Oxmoor Road ♦ Birmingham, AL ♦ 35211 ♦ Jefferson County



LOCATION MAP

2879-2881 Shannon-Oxmoor Road ♦ Birmingham, AL ♦ 35211 ♦ Jefferson County



Mark Dinan, MBA, CCIM

(c) 205-980-3434

(c) 205-243-3434

markdinan@bellsouth.net

MARK DINAN
Commercial & Investment Real Estate



*All Information furnished regarding property sale, rental, or financing is from sources deemed reliable, but is not guaranteed.

DEMOGRAPHICS

2879-2881 Shannon-Oxmoor Road ♦ Birmingham, AL ♦ 35211 ♦ Jefferson County

DEMOGRAPHIC SUMMARY

2881 Shannon Oxmoor Rd, Birmingham, Alabama, 35211

Ring of 3 miles

KEY FACTS

45,782

Population



19,475

Households

36.4

Median Age

\$66,851

Median Disposable Income

EDUCATION

4.3%

No High School Diploma



12.3%

High School Graduate



24.9%

Some College/
Associate's Degree



58.6%

Bachelor's/Grad/
Prof Degree

INCOME



\$83,685

Median Household Income



\$50,691

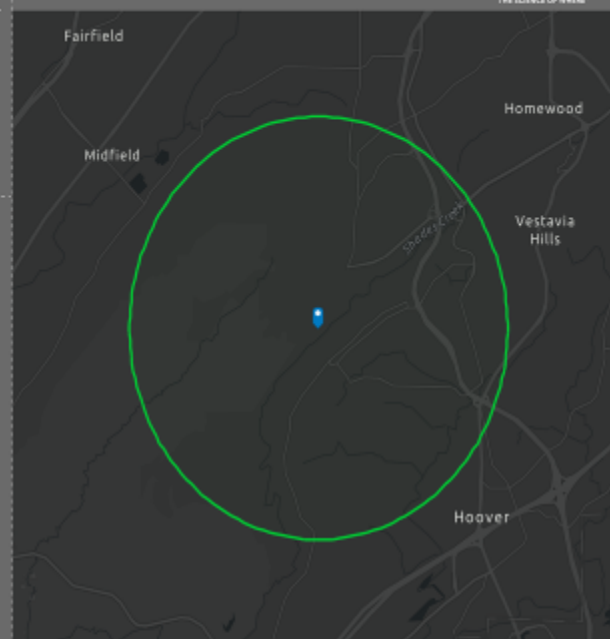
Per Capita Income



\$188,963

Median Net Worth

HOUSEHOLD INCOME



EMPLOYMENT



White Collar

79.6%



Blue Collar

11.8%



Services

11.1%

2.5%

Unemployment Rate