

For Lease

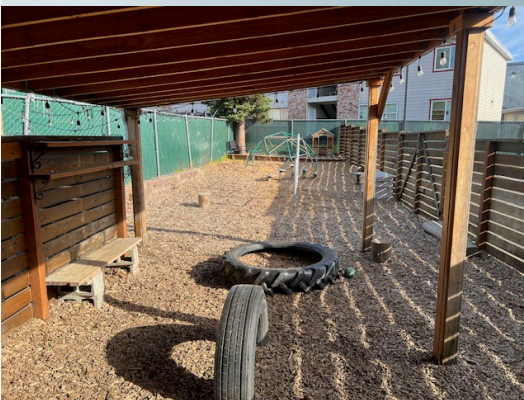
Move-In Ready Childcare Facility
In Great Condition



725 NW Dale Ave, Portland, OR

Previous Childcare Facility
in a premium location.
Current buildout is ideal for
multiple classrooms and age
groups. Outdoor Play Area
included in Premises.

Immediate Availability



725 NW Dale Ave, Suites 102-104, Portland, OR 97229

- 4,800 Total Approximate sq. ft., divisible to 1,600 sq. ft.
- 3 ADA Restrooms with 4 Child Toilets
- Large Outdoor Play Area
- 3 Kitchenettes plus additional handwashing sinks
- Washer/Dryer Connections and Mop Sink
- Off-street Parking 2.5/1,000 SF
- Great Neighborhood Location with Easy Access to Highway 26
- Call for Rates

Contact:

Jeff Kiersey

503-524-7730 Ext. 2

jeffk@kierseyandmcmillan.com

Erica Jensen

503-524-7730 Ext. 6

ericaj@kierseyandmcmillan.com

Kiersey & McMillan, Inc.

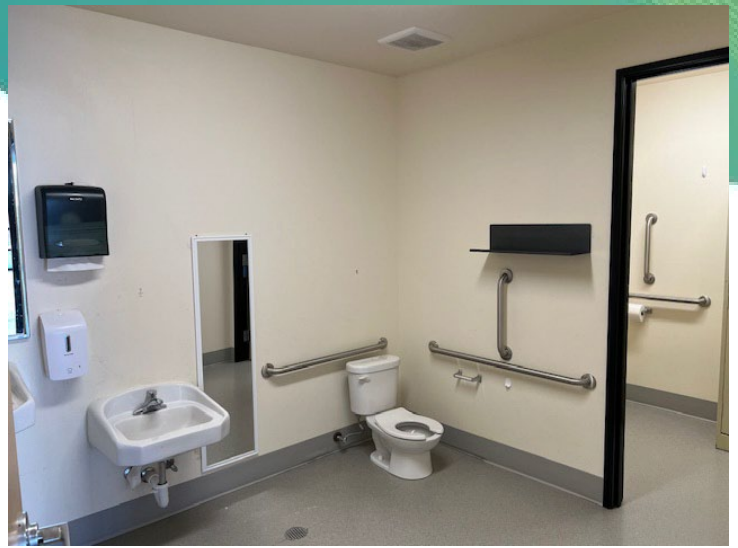
PO Box 1696

Beaverton, OR, 97075

www.kierseyandmcmillan.com



The information contained herein is deemed reliable but is not guaranteed. All information should be verified prior to leasing.



Contact:

Jeff Kiersey

503-524-7730 Ext. 2

jeffk@kierseyandmcmillan.com

Erica Jensen

503-524-7730 Ext. 6

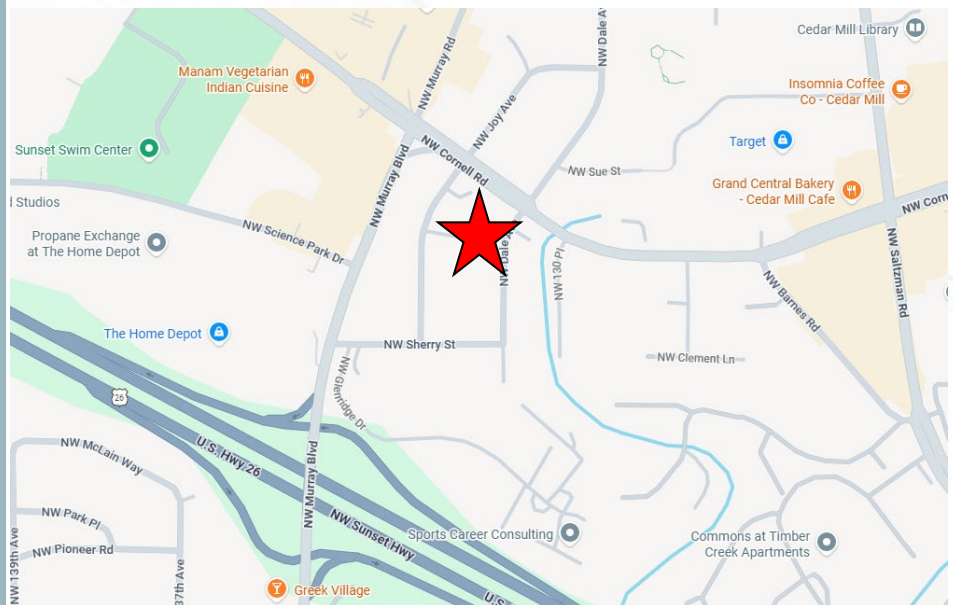
ericaj@kierseyandmcmillan.com

Kiersey & McMillan, Inc.

PO Box 1696

Beaverton, OR, 97075

www.kierseyandmcmillan.com



The information contained herein is deemed reliable but is not guaranteed. All information should be verified prior to leasing.