

57 WEST 38TH ST

MIDTOWN | NYC

WEST 38TH STREET &
6TH AVENUE



57 WEST 38TH ST

SIZE

Ground	4,000 SF
Mezz.	1,000 SF
Cellar	4,600 SF

CEILING HEIGHT

Ground	16 feet
Mezz.	9 feet
LL	12 feet

FRONTAGE

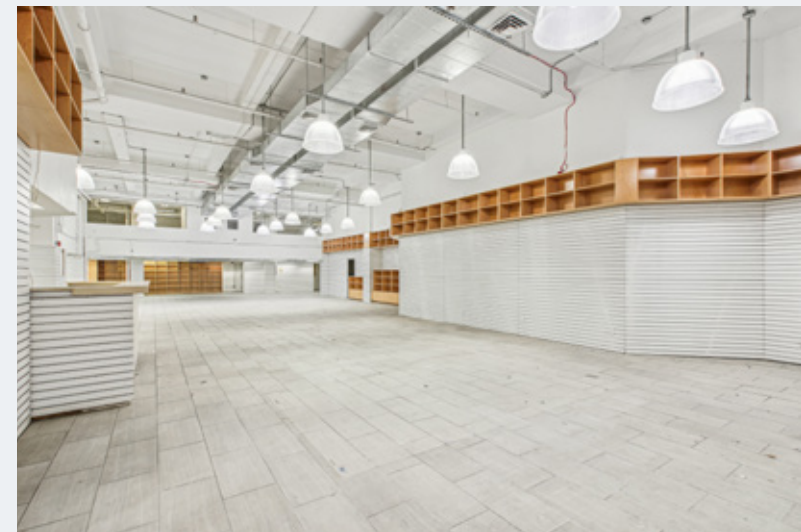
35 feet

NEIGHBORS ON THE BLOCK

- Refinery rooftop
- Culture Espresso
- Bstro 38
- 38 Food Court
- Russian Manicure
- Hotel Hendricks
- Annam Cafe
- Matto Espresso
- Three Hot Pot & BBQ
- Isla & Co
- Archer Hotel
- Americana Inn
- Gongcha
- Winnie's Jazz Bar
- Class on 38th
- CVS

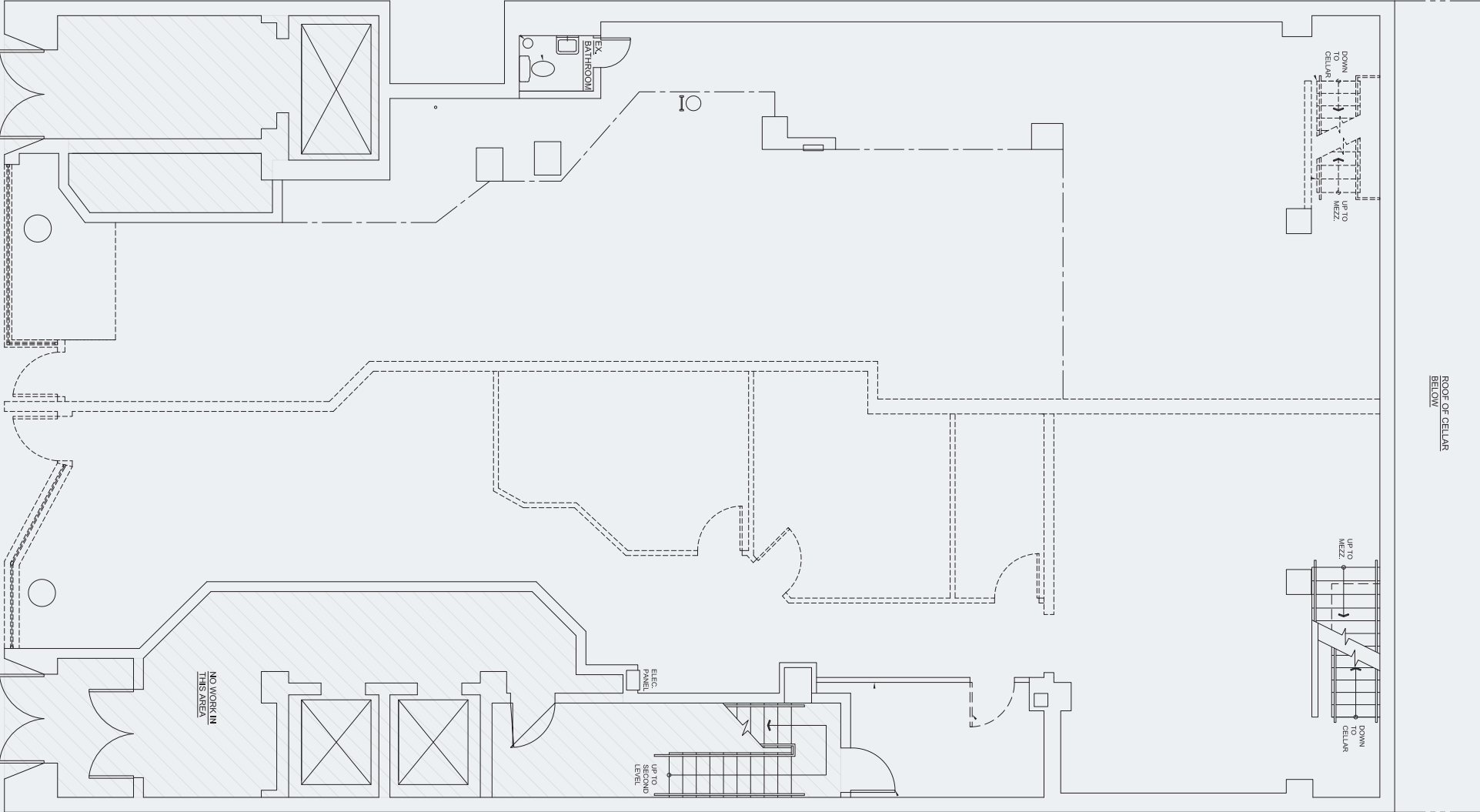
NOTES

- Previously Bead World
- Well maintained
- Gas in place
- Legal lower level
- Cannabis and Cabaret uses are prohibited
- Grand Entrance with minimal columns
- 2 existing HVAC units
- Can be Vented
- Dense hotel neighborhood
- Logical divisions will be considered



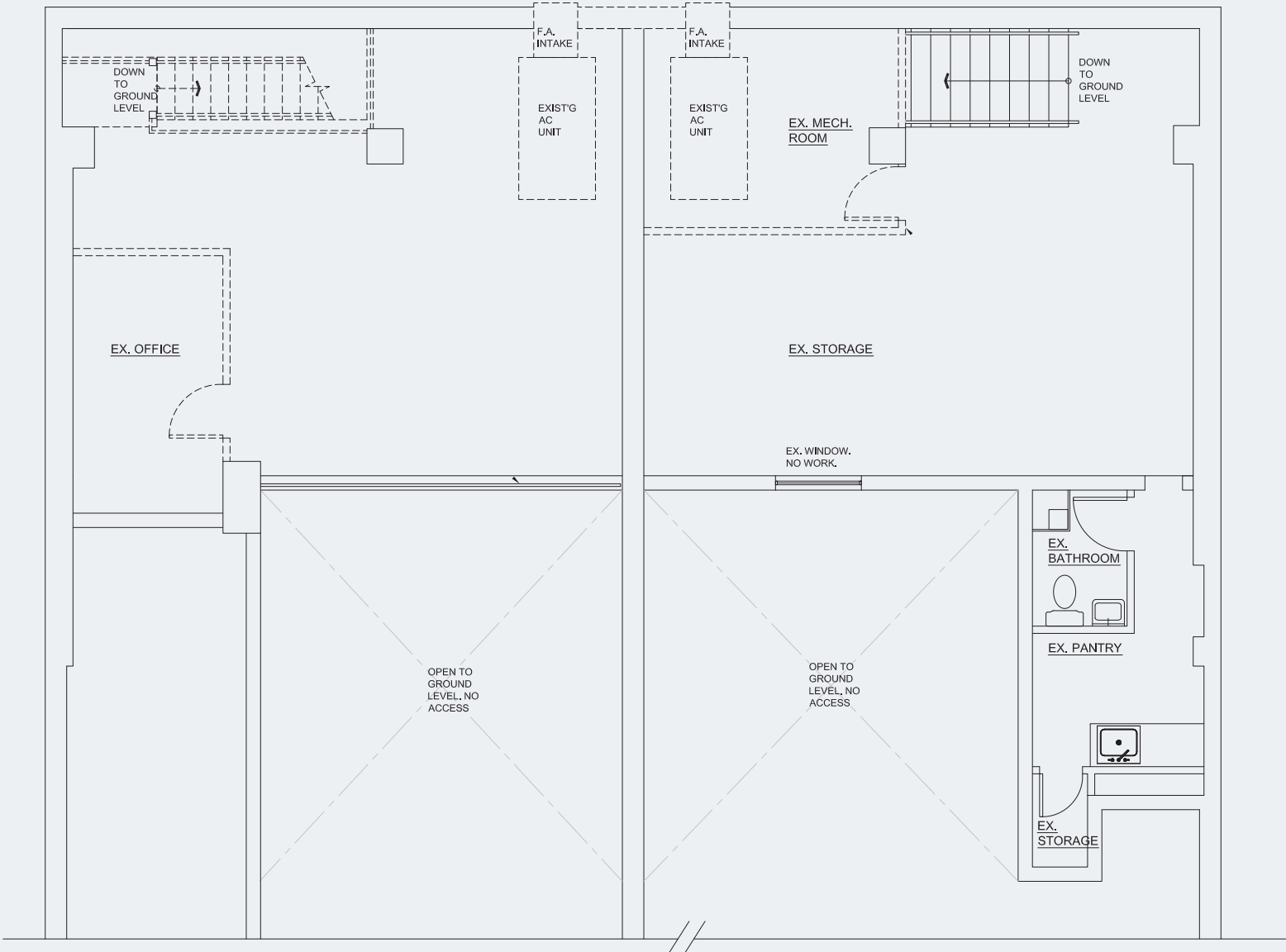
57 WEST 38TH ST

GROUND FLOOR

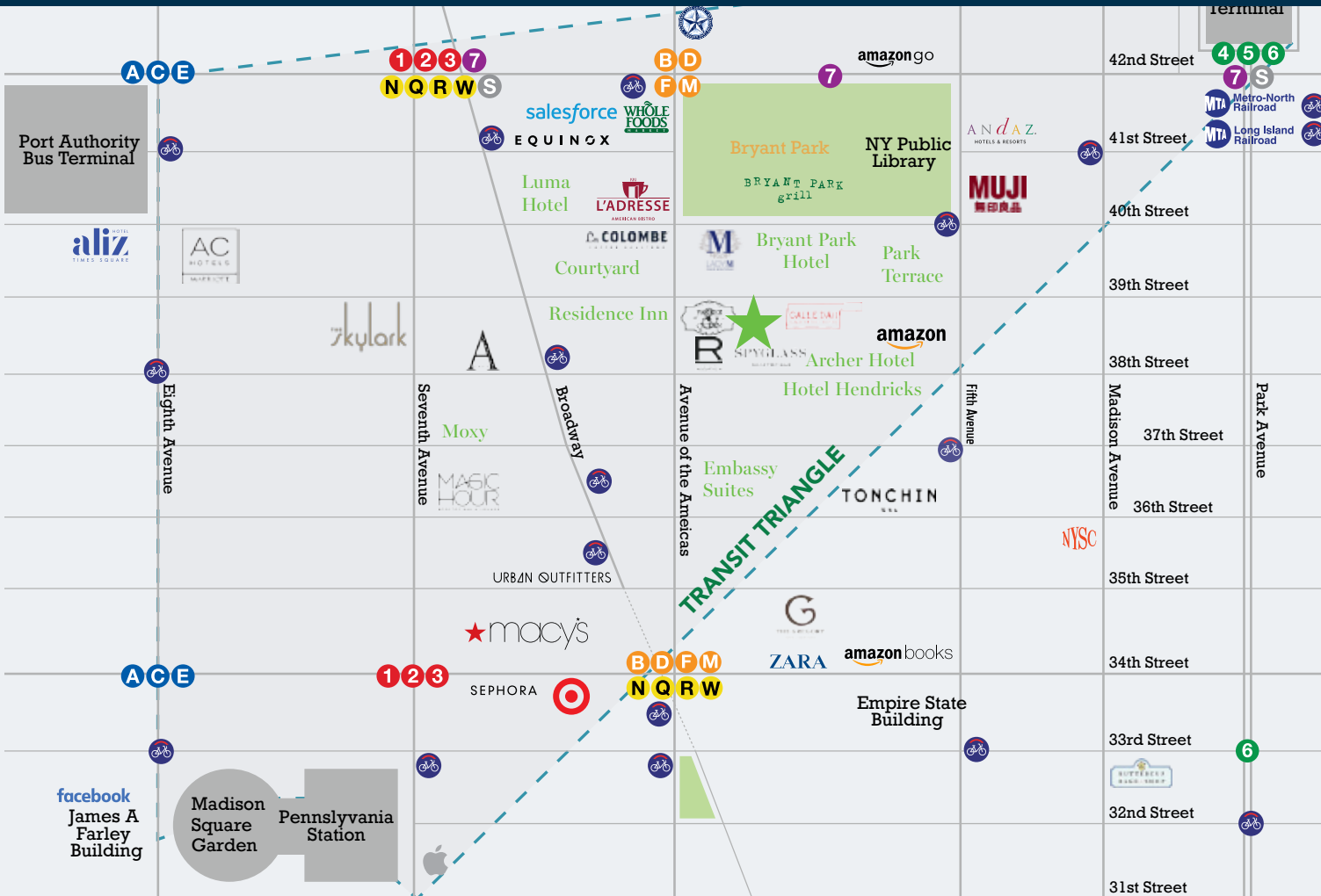


57 WEST 38TH ST

MEZZANINE

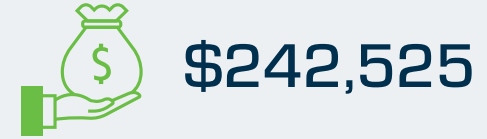


57 WEST 38TH ST

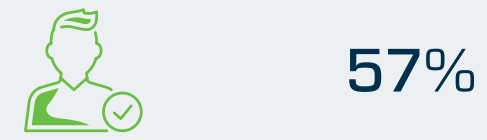


.25 MILE RADIUS

AVERAGE HH INCOME



AGES 25-44 YEARS OLD



POPULATION



△ Center of the Transit Triangle

△ Nearby Transportation:

4 5 6 F M N R W 7 S

MTA Long Island Rail Road MTA Metro-North Railroad





OLIVIA HWANG
Senior Managing Director
212.776.1238
ohwang@lee-associates.com



BRAD SCHWARZ
Executive Managing Director & Principal
212.776.1290
bschwarz@lee-associates.com

