



 **JLL** SEE A BRIGHTER WAY

# For lease

Medical space available at  
Mercy Medical Plaza

2,296 - 2,693 SF

**Mercy Medical Plaza**  
411 Laurel Street  
Des Moines, Iowa 50314

## Property Overview

Availability: Suite 2310- 2,693 SF  
Suite 3170- 2,296 SF

Lease rate: \$17.00/NNN  
Building size: 49,728 SF

- Adjacent parking ramp providing onsite parking
- Located within the Mercy One Medical Campus downtown Des Moines
- Directly off Interstate 235

**Justin Lossner, CCIM, SIOR**  
Senior Managing Director  
justin.lossner@jll.com  
+1 515 371 0846

**Lucas Hedstrom**  
Vice President  
lucas.hedstrom@jll.com  
+1 515 564 9269

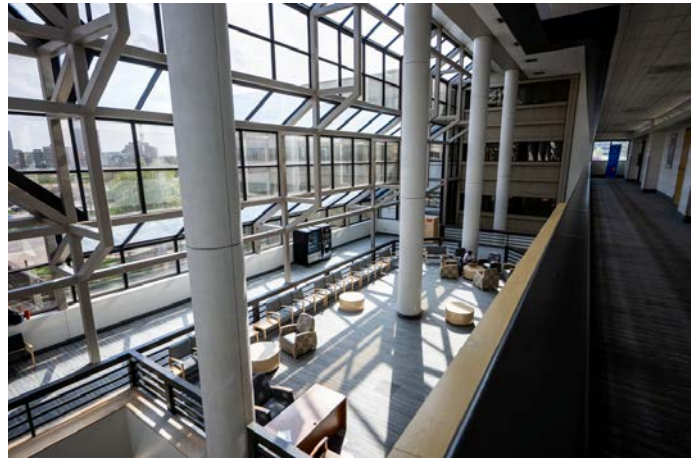
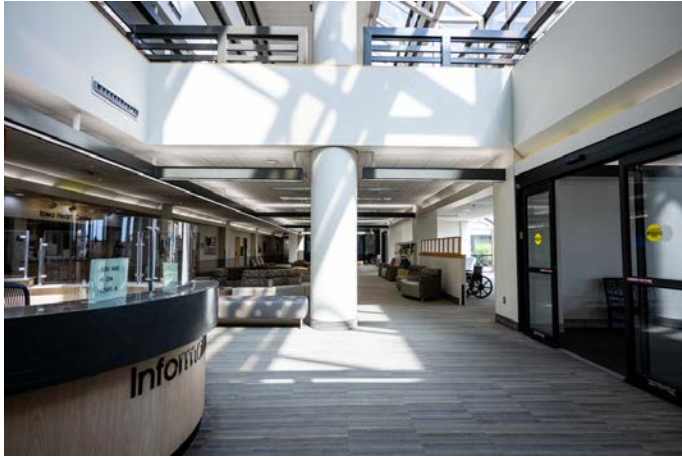
**Thomas Edwards**  
Associate  
thomas.edwards@jll.com  
+1 515 802 4684



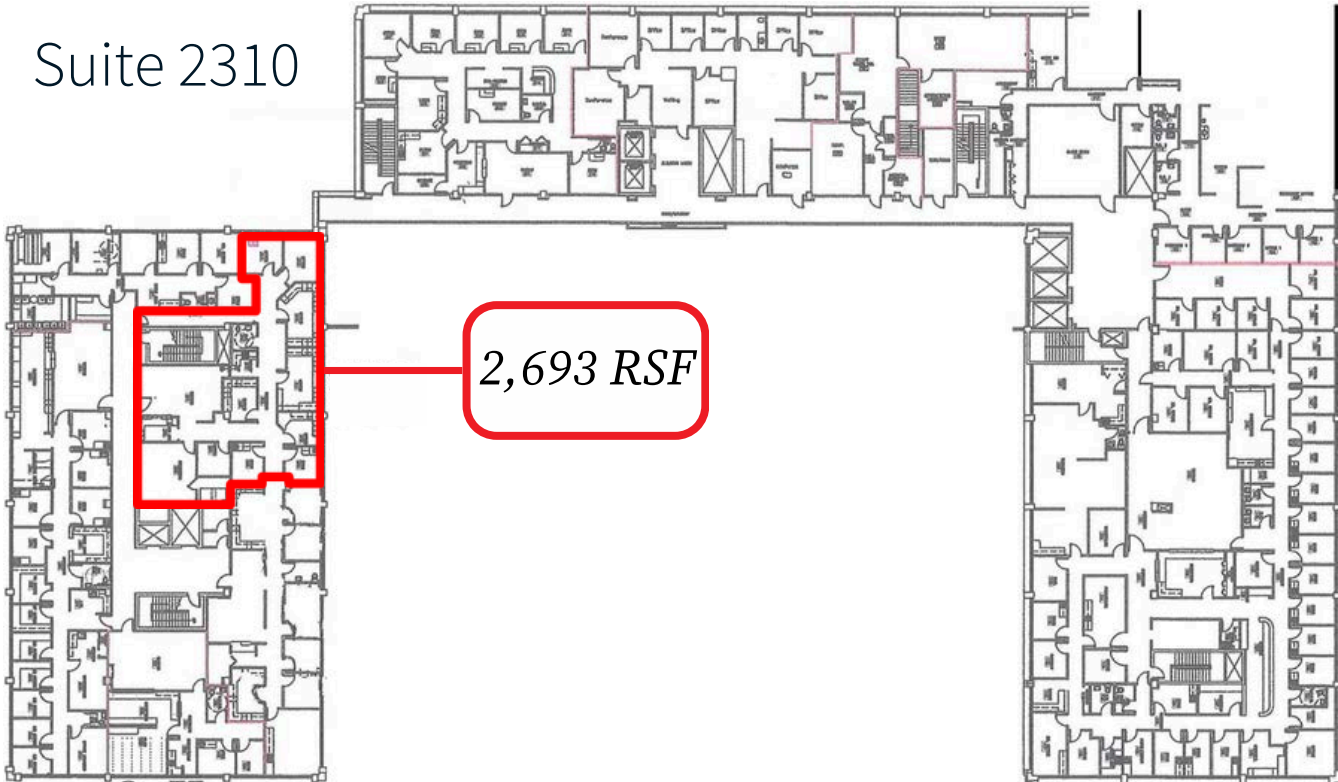
[jll.com/des-moines](http://jll.com/des-moines)

Jones Lang LaSalle Americas, Inc.

# Images

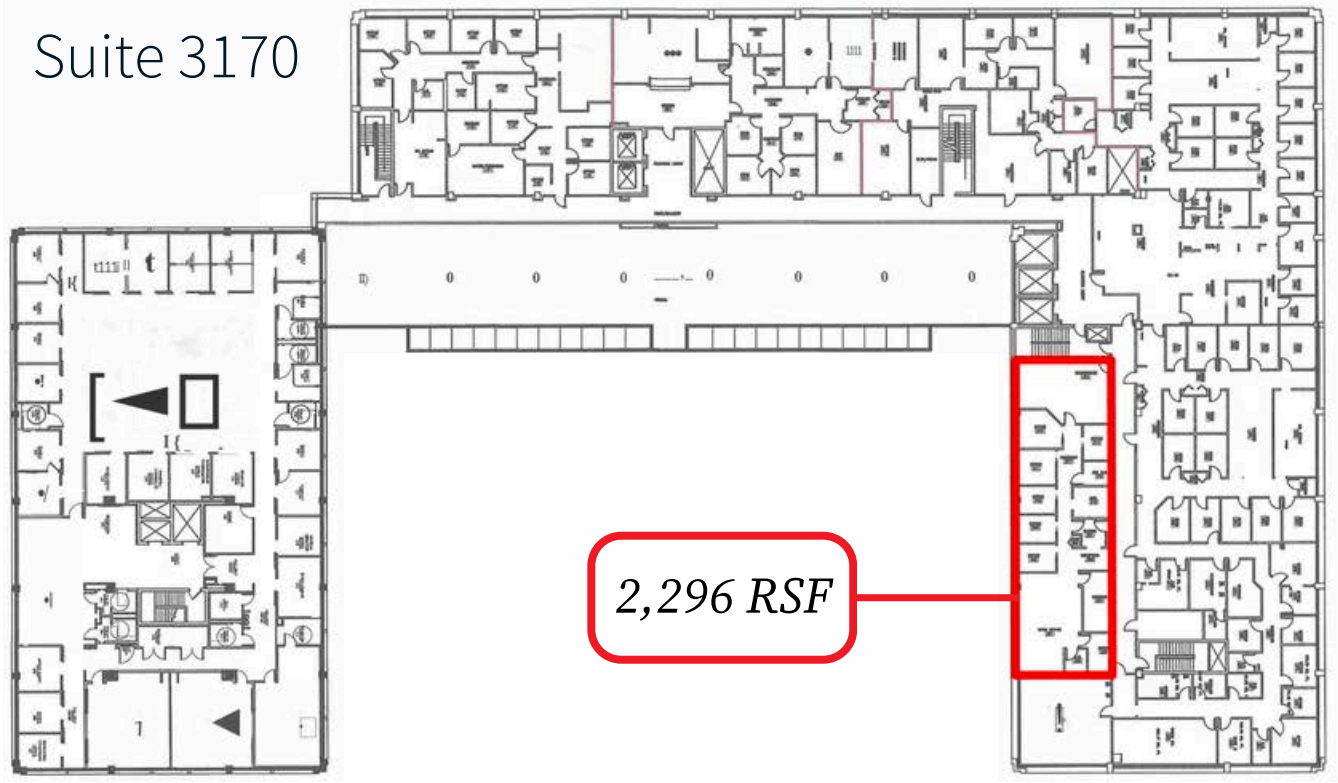


Suite 2310



2,693 RSF

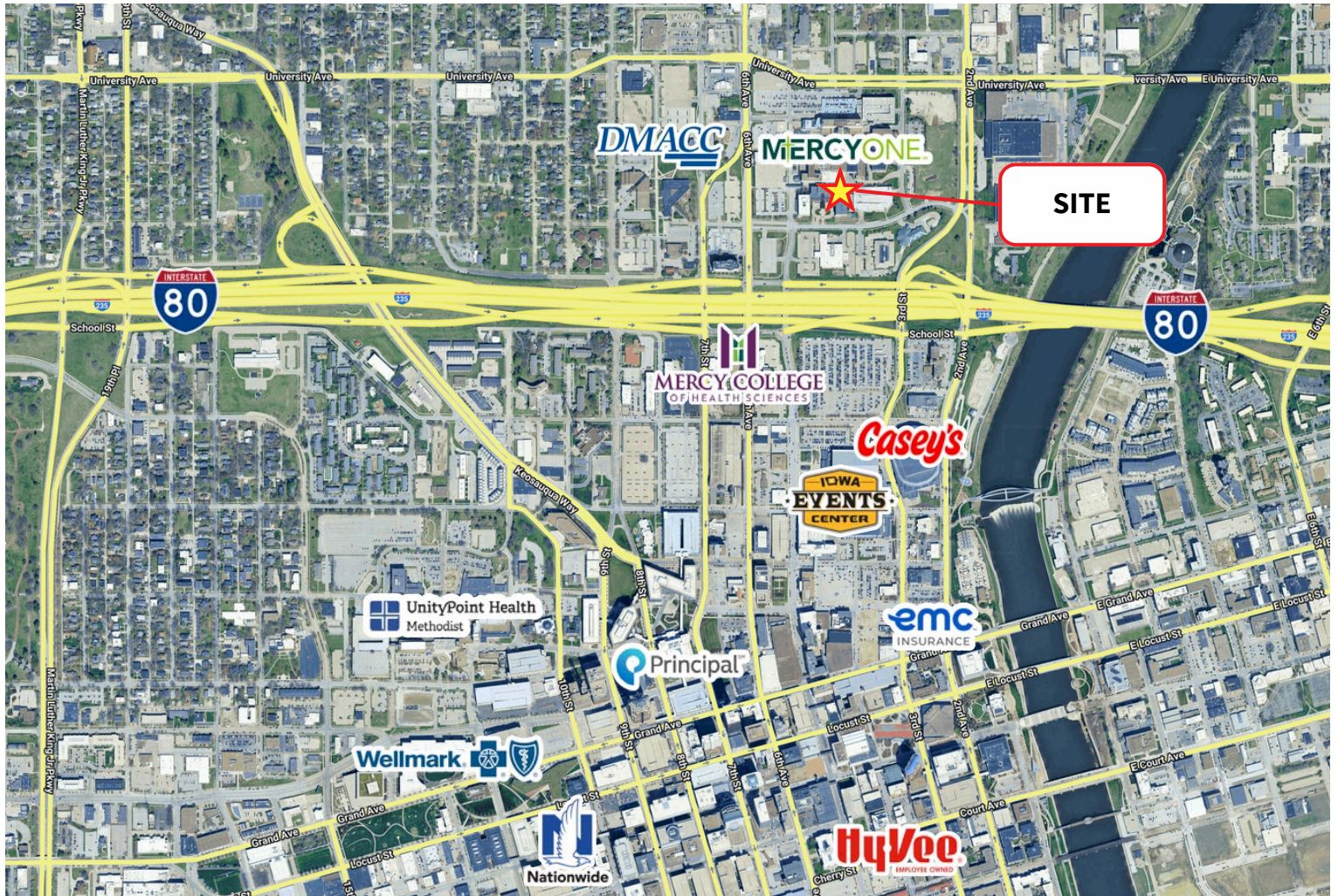
Suite 3170



2,296 RSF

# For lease

411 Laurel Street | Des Moines, Iowa 50314



**Contact broker for  
additional information**

[jll.com/des-moines](http://jll.com/des-moines)

**Justin Lossner, CCIM, SIOR**

Senior Managing Director

[justin.lossner@jll.com](mailto:justin.lossner@jll.com)

+1 515 371 0846

**Lucas Hedstrom**

Vice President

[lucas.hedstrom@jll.com](mailto:lucas.hedstrom@jll.com)

+1 515 564 9269

**Thomas Edwards**

Associate

[thomas.edwards@jll.com](mailto:thomas.edwards@jll.com)

+1 515 802 4684