



Aviva Building - Building B
Ground Floor Retail

FOR LEASE
HIGH EXPOSURE GROUND FLOOR
RETAIL SPACE
18688 E Burnside Street - Building B

Heather Miller
KW Commercial - Portland Central
Oregon Licensed Broker
(503) 310-1935
heather_miller@kw.com

EXECUTIVE SUMMARY

FEATURES

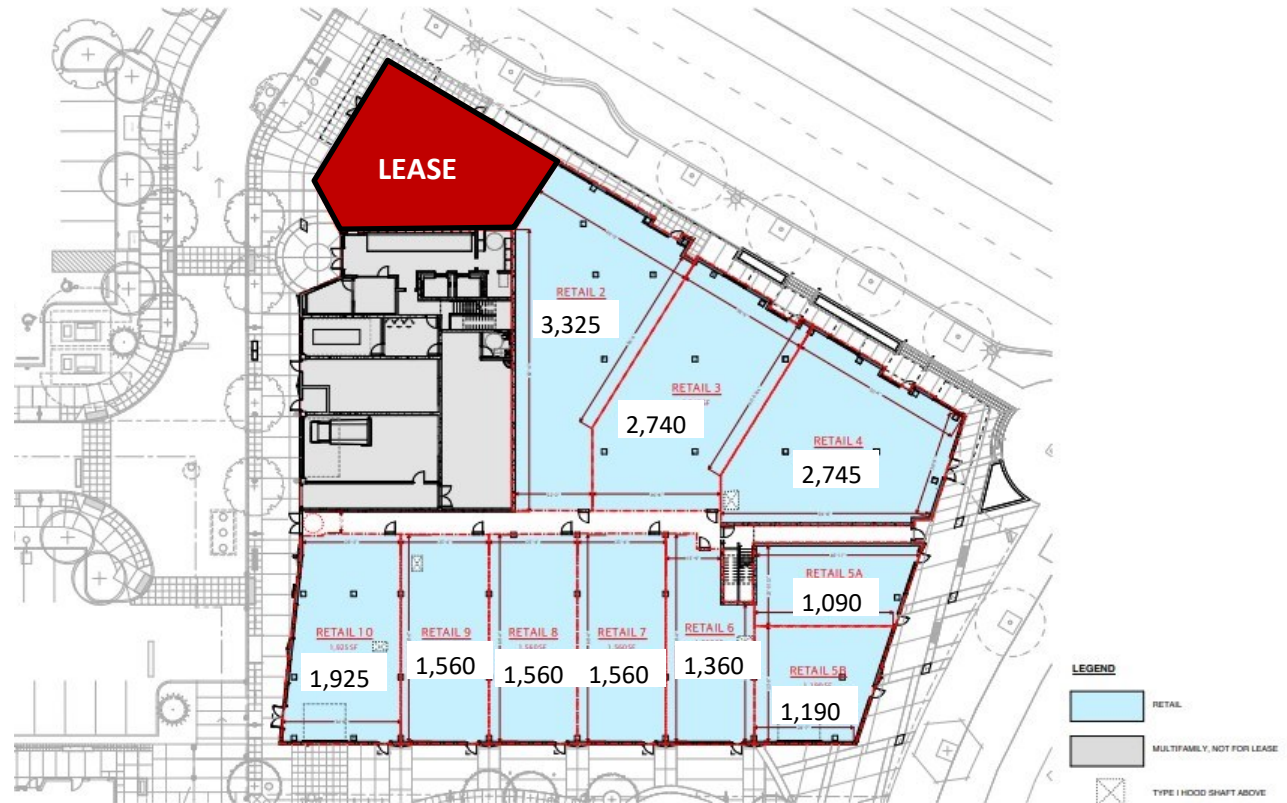
- 20,027 SF Available
- Can be demised to smaller spaces (see floor plan)
- Warm vanilla shell delivery
- High exposure ground floor space
- Signage opportunity
- Excellent accessibility to MAX line
- Multiple access points to the property
- Close proximity to I-84
- Beautiful Mt. Hood views
- On-site parking
- Tenant improvement allowance available

LEASE RATE

Call for rate

(NNN-\$5-6/SF/Yr)

20231011 Aviva - Ground Floor Leasing Plan - Option A (~21,180 sf leasable area)



Spaces can be combined

DOWNTOWN ROCKWOOD SITE
18688 E Burnside Street, Gresham, OR

RKM DEVELOPMENT



COMMERCIALSM

SITE PLAN OVERVIEW

Building B



Concept rendering facing west with new plaza and three buildings, including the public market hall.

DOWNTOWN ROCKWOOD SITE
18688 E Burnside Street, Gresham, OR

RKM DEVELOPMENT



COMMERCIALSM

SITE PLAN OVERVIEW

Building B



Conceptual rendering of the new plaza, three buildings and parking.

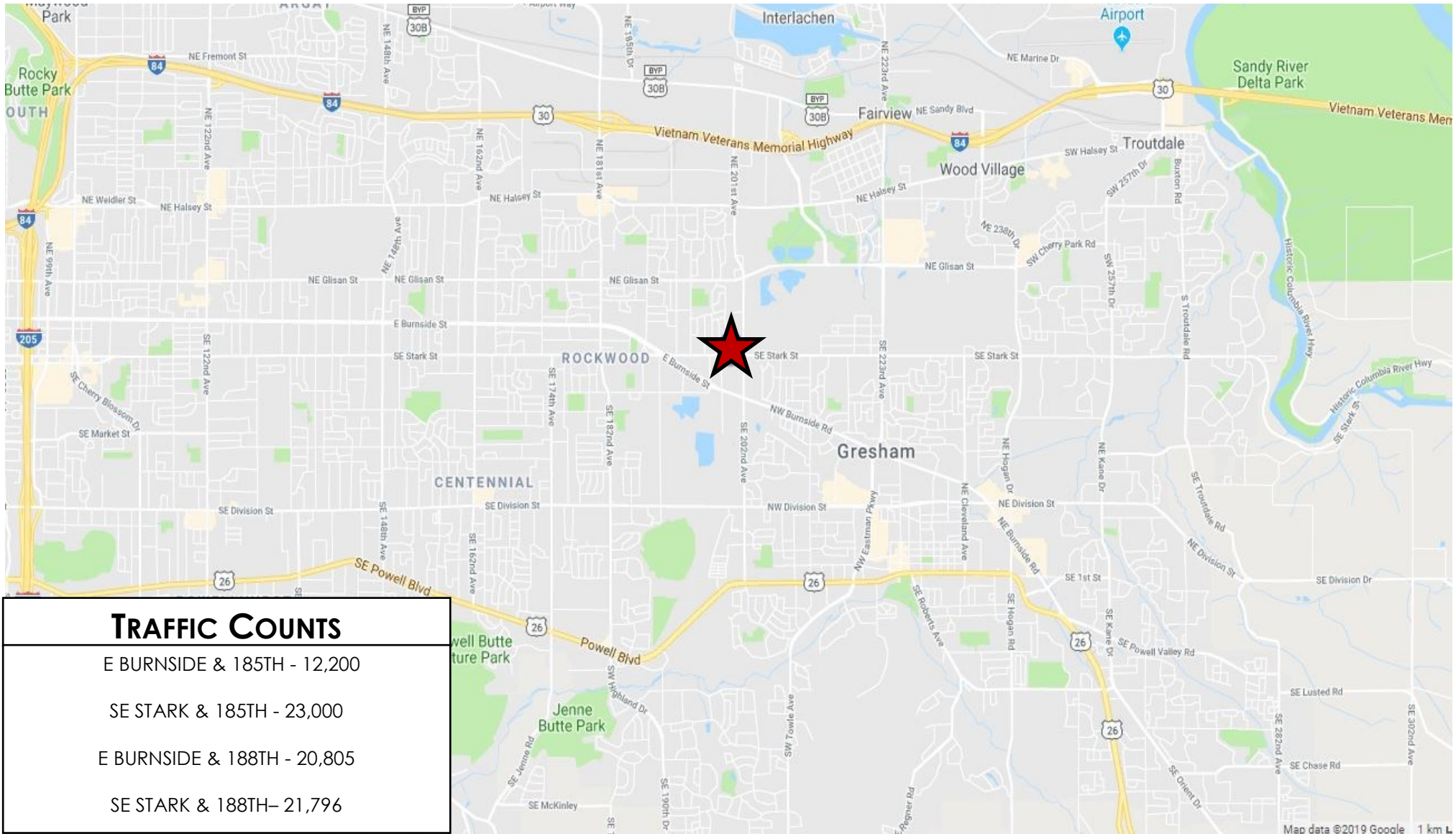
DOWNTOWN ROCKWOOD SITE
18688 E Burnside Street, Gresham, OR

RKM DEVELOPMENT



COMMERCIALSM

LOCATION



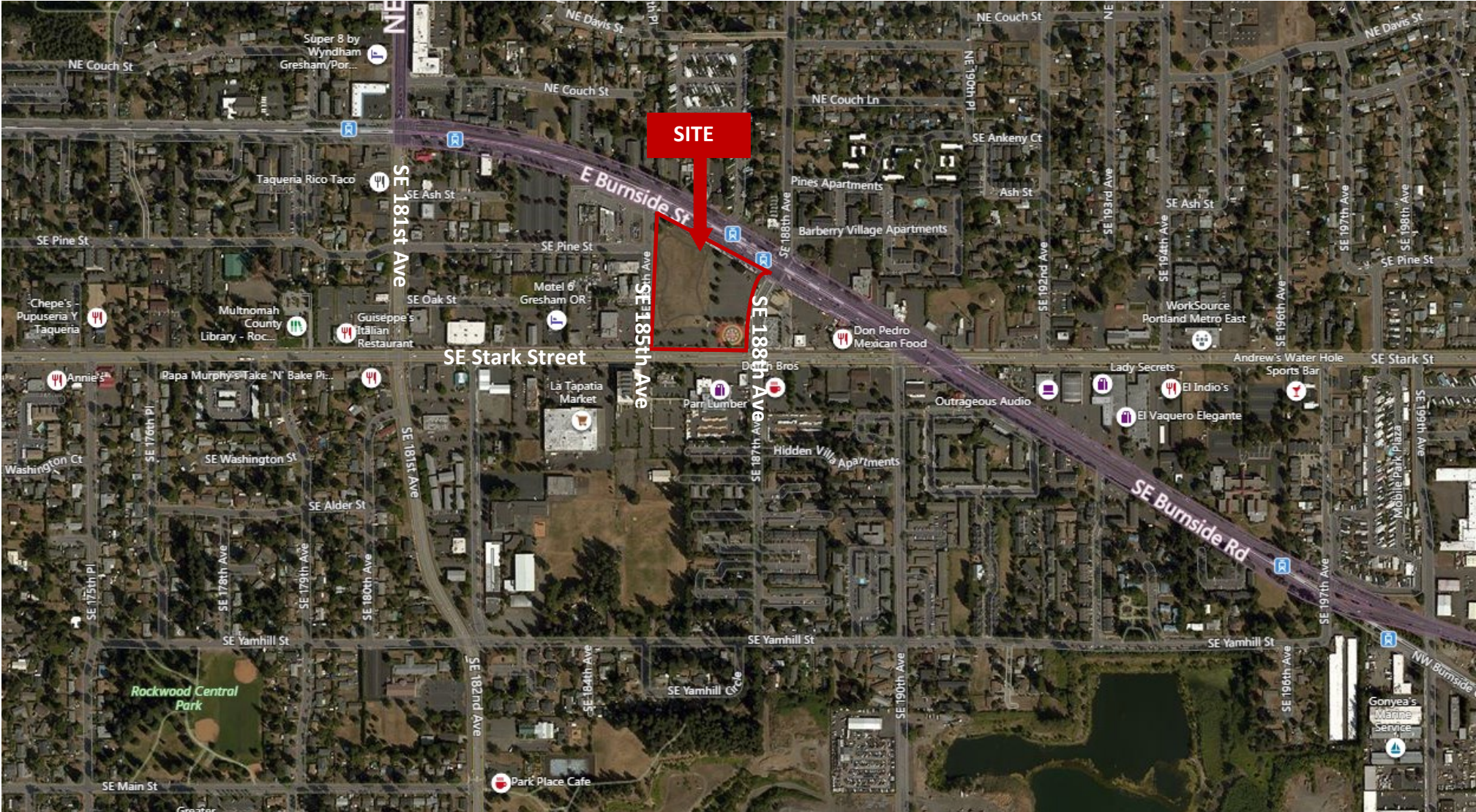
DOWNTOWN ROCKWOOD SITE
18688 E Burnside Street, Gresham, OR

RKM DEVELOPMENT



COMMERCIALSM

AERIAL



DOWNTOWN ROCKWOOD SITE
18688 E Burnside Street, Gresham, OR

RKM DEVELOPMENT



COMMERCIAL