

909 Michigan Avenue Columbus, OH 43215

Cold Storage / Flex /
Lab / Food Grade Facility

Contact Us

Kilar Mariotti
Senior Associate
+1 614 499 7350
kilar.mariotti@cbre.com

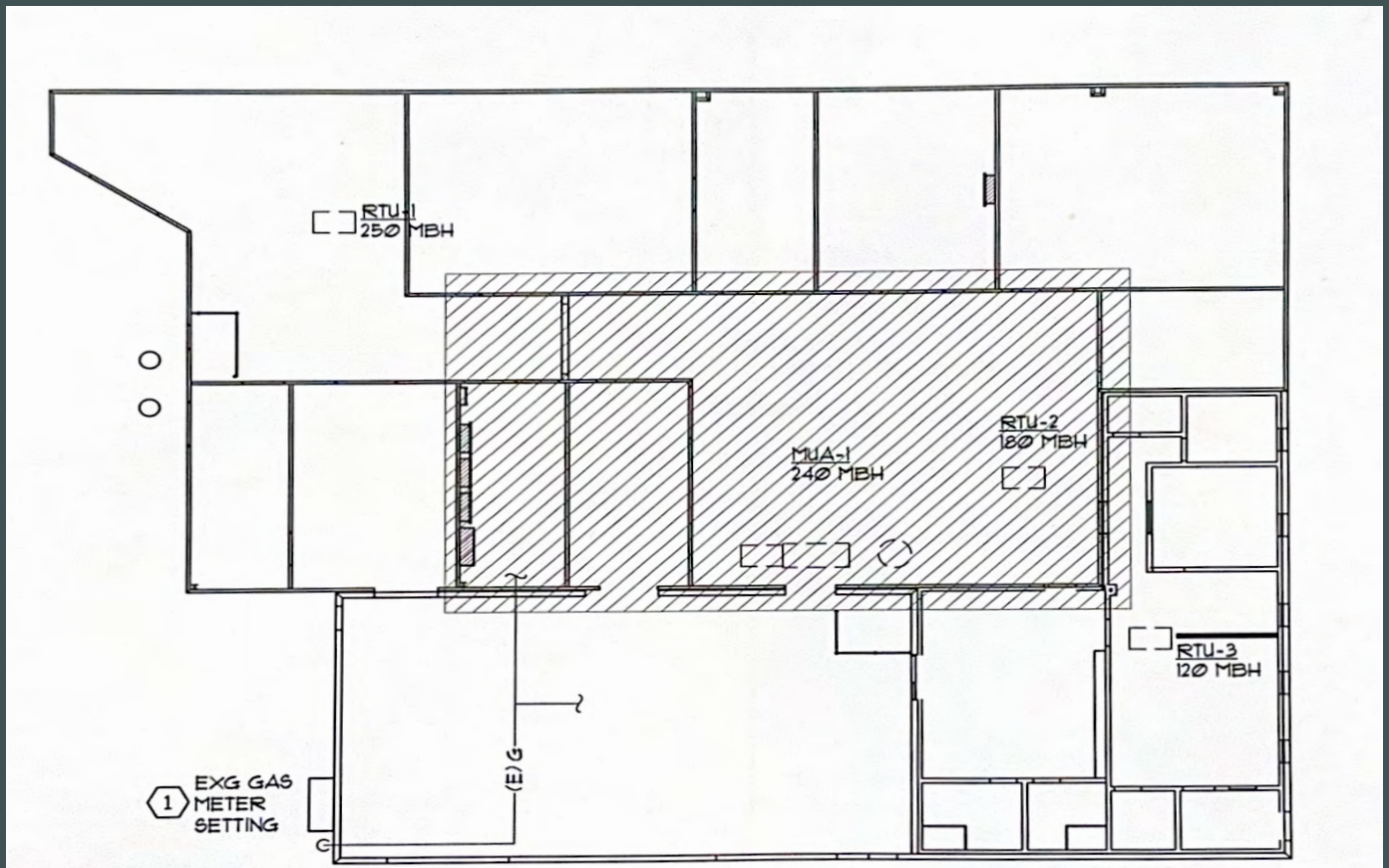
Shane Ellis
Associate
+1 716 913 0727
shane.ellis2@cbre.com

±9,523 Square Feet on 0.87 Acres



Building Specifications

Building Size	± 9,523 SF
Office Size	± 900 SF
Freezer/Cooler Size	± 2,500 SF
Warehouse Size	± 6,000 SF
Acreage	0.87
Building Height	16'
Docks	(1) 8' x 6'
Dock Equipment	Mechanical leveler, light on swing arm, outlets, shelter
Drive-in Doors	(2) 9' x 11'
Power	1,000-amps
Year Built	1992
Parking Ratio	2.10/1,000 SF (20 spaces)



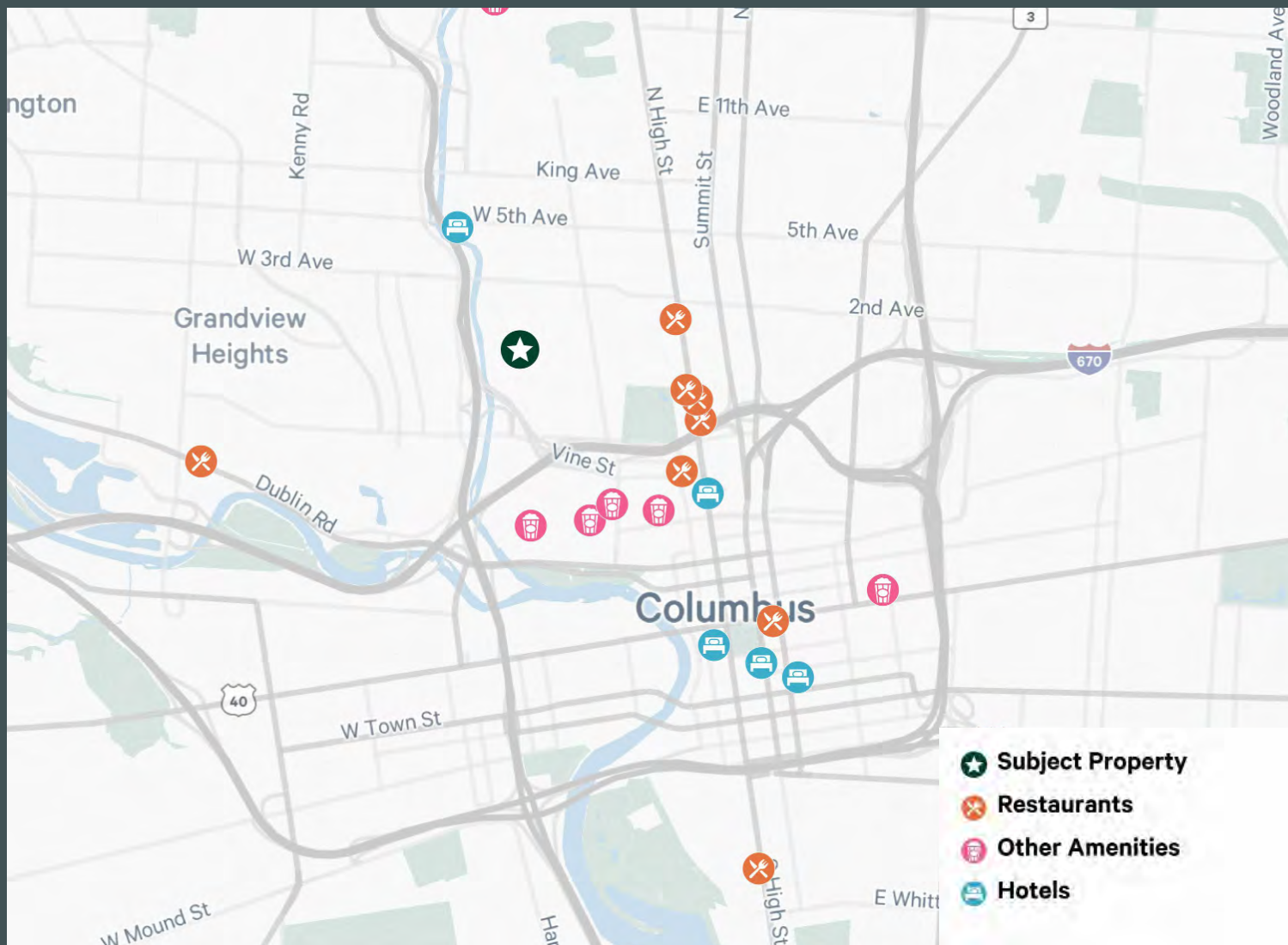


Prime Location

Thriving Business Hub

909 Michigan Avenue is perfectly positioned in the heart of Columbus, Ohio. Situated in a thriving business hub, you'll find yourself surrounded by key players such as Ohio State University, Nationwide, American Electric Power, and Huntington. This strategic spot offers more than just ease of access; it's an exceptional opportunity for networking and collaboration, fostering a ground for your business to grow and innovate.

The Ohio State University	41,000 Employees
Nationwide	16,000 Employees
American Electric Power	6,400 Employees
Huntington	5,741 Employees
INEOS	250 Employees
FMX	200 Employees
MA Design	150 Employees
Erest & Young	100 Employees
C H Robinson	100 Employees



Nearby Amenities

Convenient Access

909 Michigan Avenue is just steps from the Short North Arts District, providing immediate access to a wide array of dining and entertainment options. Within minutes, enjoy all Columbus have to offer.

The Guild House

Brassica

Forno Kitchen + Bar

Butcher & Rose

Local Cantina

Columbus Museum of Art

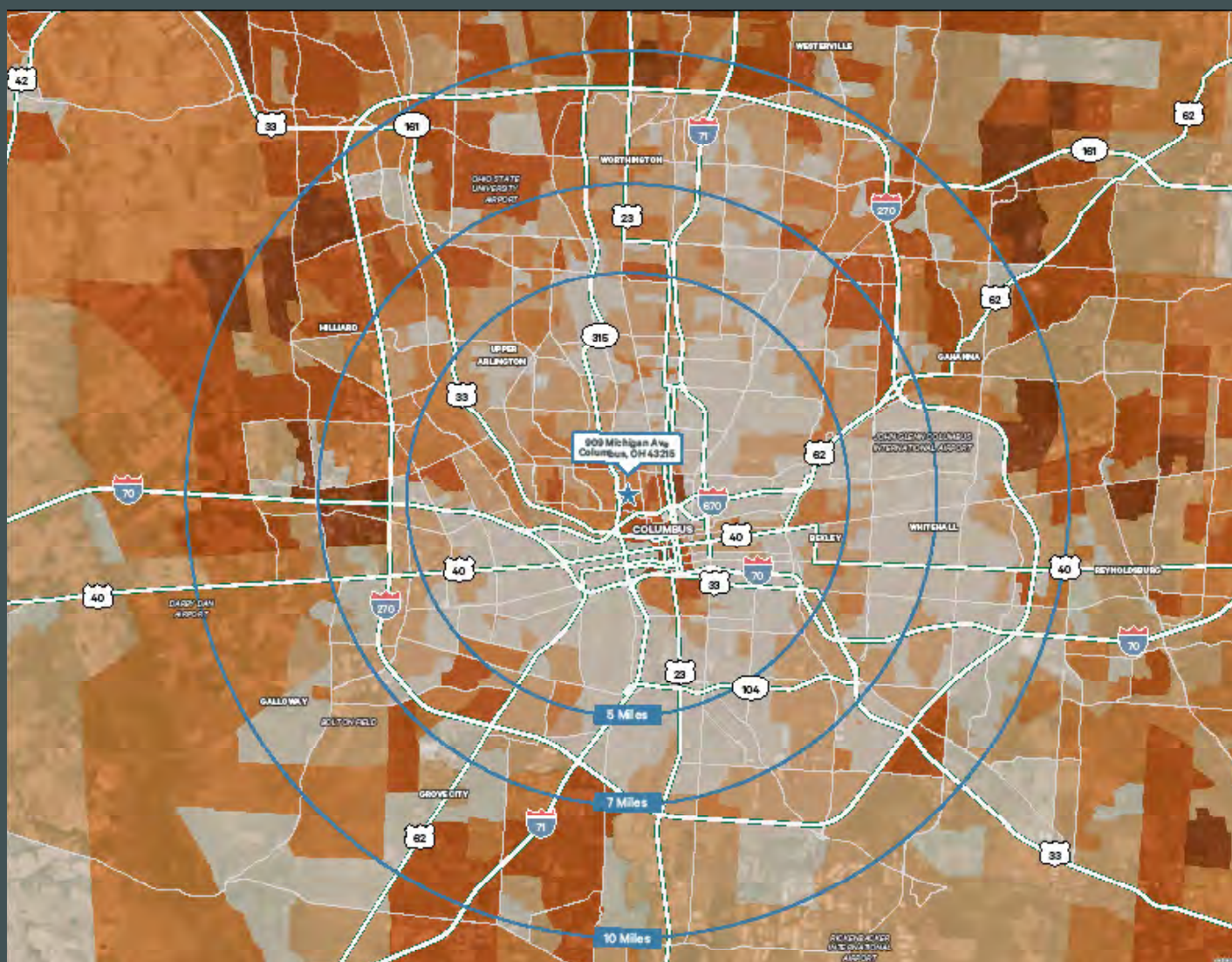
North Market

Lower.com

Ohio Stadium (OSU)

Nationwide Arena

KEMBA Live!



Talent Hub

Connect & Grow

Elevate your business and extend your reach from 909 Michigan Avenue, ideally situated to connect you with the dynamic and thriving white-collar workforce of Columbus. This location grants you unparalleled access to a deep and highly qualified talent pool, making it easier to connect with the skilled professionals you need to drive growth.

2025 White Collar Labor Demo







±9,523 SF

Total Availability

±900 SF

Office Size

±2,500 SF

Freezer/Cooler Size

±6,000 SF

Warehouse Size



Contact Us

Kilar Mariotti

Senior Associate

+1 614 499 7350

kilar.mariotti@cbre.com

Shane Ellis

Associate

+1 716 913 0727

shane.ellis2@cbre.com

© 2025 CBRE, Inc. All rights reserved. This information has been obtained from sources believed reliable, but has not been verified for accuracy or completeness. You should conduct a careful, independent investigation of the property and verify all information. Any reliance on this information is solely at your own risk. CBRE and the CBRE logo are service marks of CBRE, Inc. All other marks displayed on this document are the property of their respective owners, and the use of such logos does not imply any affiliation with or endorsement of CBRE. Photos herein are the property of their respective owners. Use of these images without the express written consent of the owner is prohibited.