

5%
CO-BROKE



54 NORTH 45TH AVENUE

PHOENIX, ARIZONA 85043

14,557 Square Feet, Suites A & B

\$1.12 Per Square Foot, Modified Gross

A-1 Zoning

Dock High Loading

Minimal Office

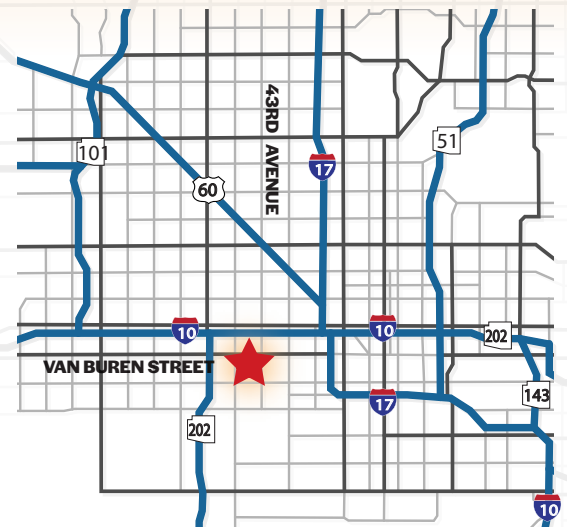
18' Clear Height

Excellent Freeway Access

Evap Cooled Warehouse

Monument Signage

5% Co-Broke to Tenant Rep Broker with Executed Lease



Adam Shteir

Partner
602.769.0521
adam@citywidecre.com

Todd Hamilton, SIOR, CCIM

Managing Partner/Designated Broker
602.909.8759
todd@citywidecre.com

Christian Butura

Sales & Leasing
480.290.8377
cb@citywidecre.com

Aimee Sanderson, CCIM

Sales & Leasing
480.678.0809
aimee@citywidecre.com

1645 East Missouri Avenue, Suite 230 • Phoenix, Arizona 85016 • 602.313.1000 • citywidecre.com



Adam Shteir

Partner
602.769.0521
adam@citywidecre.com

Todd Hamilton, SIOR, CCIM

Managing Partner/Designated Broker
602.909.8759
todd@citywidecre.com

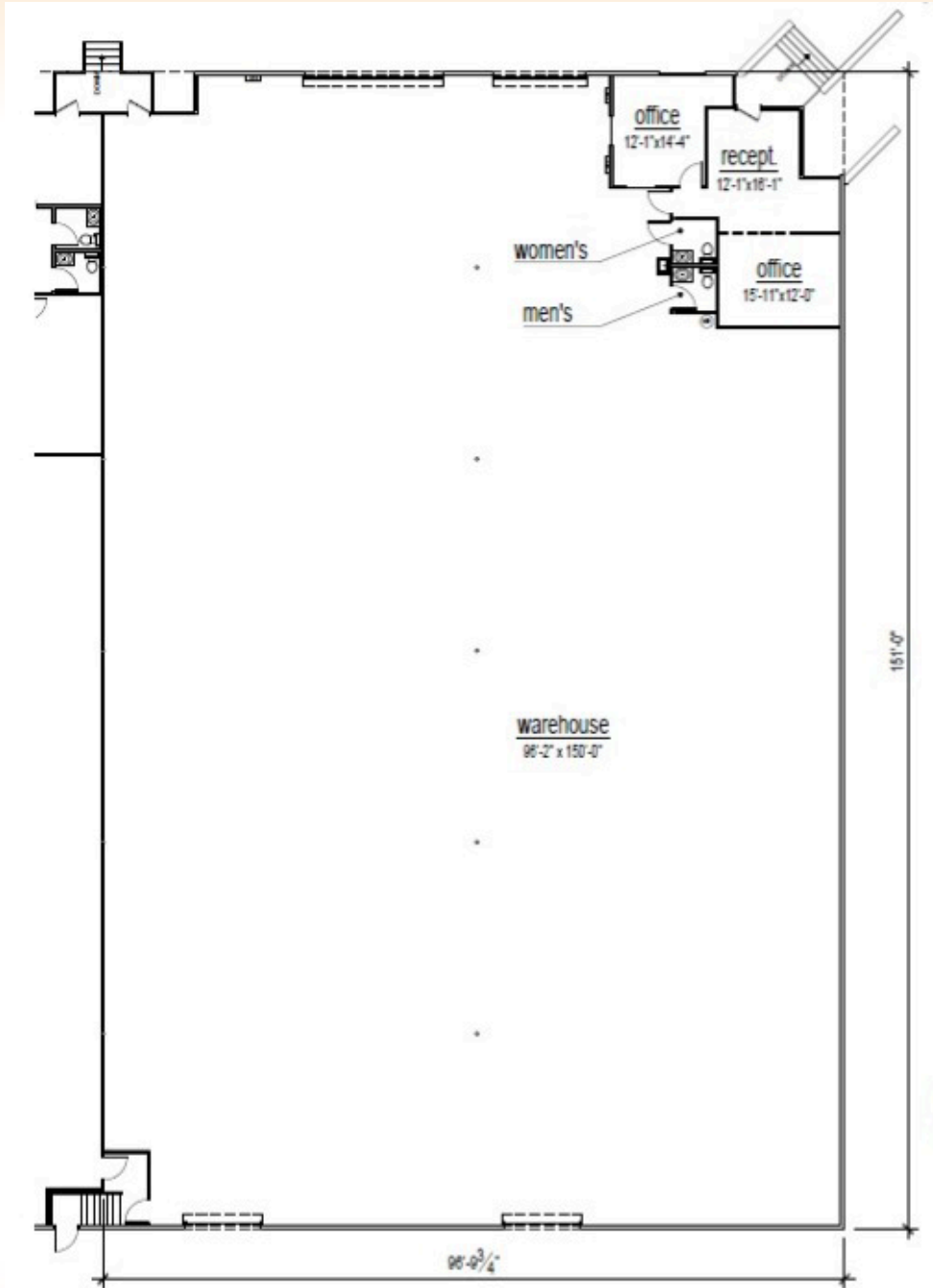
Christian Butura

Sales & Leasing
480.290.8377
cb@citywidecre.com

Aimee Sanderson, CCIM

Sales & Leasing
480.678.0809
aimee@citywidecre.com

1645 East Missouri Avenue, Suite 230 • Phoenix, Arizona 85016 • 602.313.1000 • citywidecre.com



Adam Shteir

Partner
602.769.0521
adam@citywidecre.com

Todd Hamilton, SIOR, CCIM

Managing Partner/Designated Broker
602.909.8759
todd@citywidecre.com

Christian Butura

Sales & Leasing
480.290.8377
cb@citywidecre.com

Aimee Sanderson, CCIM

Sales & Leasing
480.678.0809
aimee@citywidecre.com

1645 East Missouri Avenue, Suite 230 • Phoenix, Arizona 85016 • 602.313.1000 • citywidecre.com