

The Redstone Building

2924-2948 16TH ST, SAN FRANCISCO, CA 94103



Property Description

The Redstone Building (San Francisco Landmark No. 238) is a fully leased, 55,560-square-foot office and creative use property in the Mission District. Built in 1914 with a 1939 addition, the building combines historic brick masonry and concrete facades with extensive modern renovations. Suites and common areas have been upgraded with new finishes, building systems, and security features, while preserving the property's distinctive lobby murals and architectural details. Today, the Redstone supports a diverse tenant mix of community organizations, artists, creative users, and performance spaces, offering investors a stabilized asset with ongoing rent growth potential.

Offering Summary

Sale Price:	\$8,490,000
Cap Rate:	8.2 %
Market Cap Rate:	14.9 %
Price / SF:	\$153
Building Size:	55,560 SF
NOI:	\$691,533
Occupancy:	100%



Scan/Click for
Offering Memorandum



James Kilpatrick
President
james@nainorcal.com
510.290.9647
CalDRE #01277022

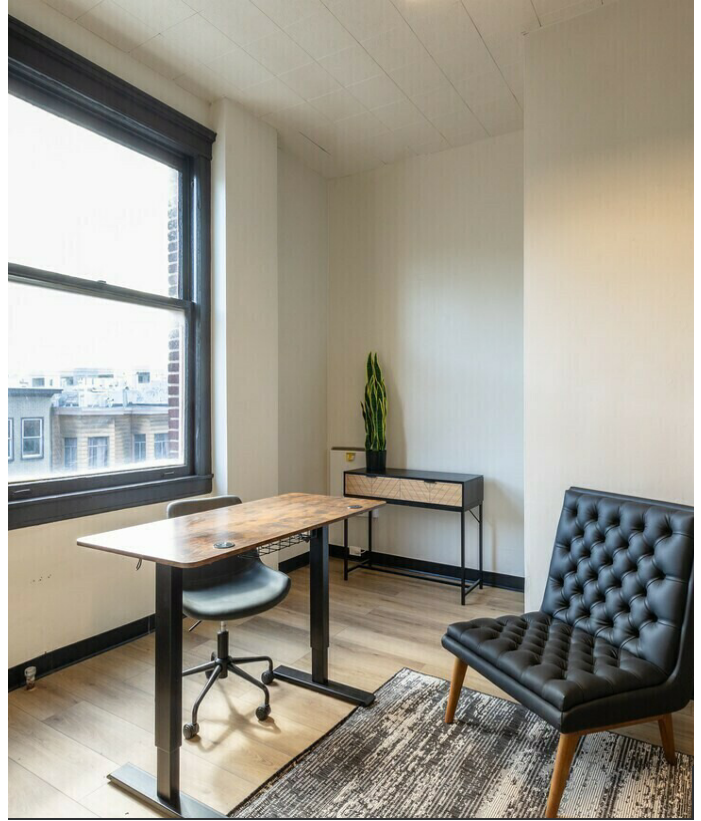
Seth Hubbert
Investment Advisor
shubbert@nainorcal.com
510.332.9389
CalDRE #02158135

Damon Gerstein
Investment Advisor
dgerstein@nainorcal.com
415.465.4907
CalDRE #02268840

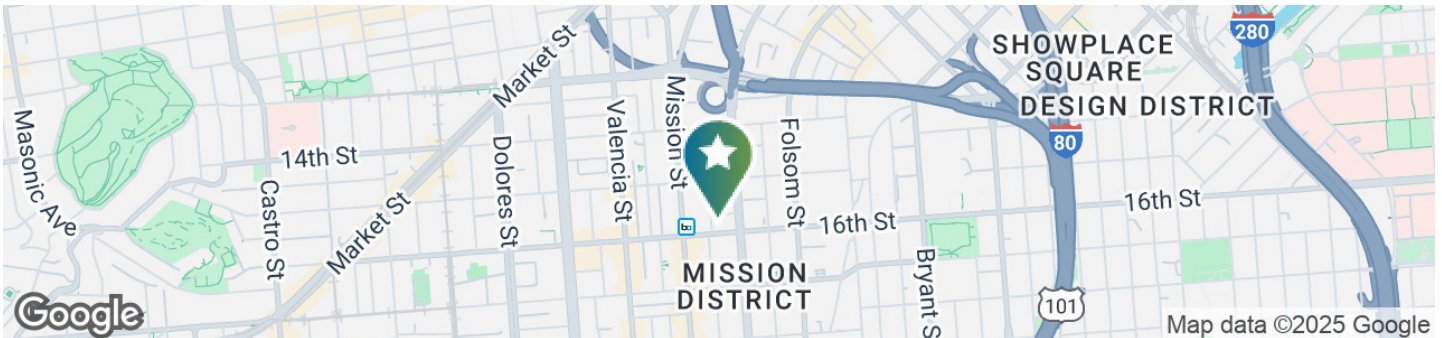
Tim Marshall
Investment Advisor
tmarshall@nainorcal.com
408.502.5363
CalDRE #02325164

Ian Cruda
Investment Advisor
icruda@nainorcal.com
408.204.2287
CalDRE ##02250093

Additional Photos



Location Information



For More Information

James Kilpatrick
President
james@nainorcal.com
510.290.9647
CalDRE #01277022

Seth Hubbert
Investment Advisor
shubbert@nainorcal.com
510.332.9389
CalDRE #02158135

Damon Gerstein
Investment Advisor
dgerstein@nainorcal.com
415.465.4907
CalDRE #02268840

Tim Marshall
Investment Advisor
tmarshall@nainorcal.com
408.502.5363
CalDRE #02325164

Ian Cruda
Investment Advisor
icruda@nainorcal.com
408.204.2287
CalDRE ##02250093