

± 6,134 SF OFFICE SPACE FOR LEASE

4005 W JEFFERSON BLVD
LOS ANGELES, CA 90016



A DIVISION OF



LEE &
ASSOCIATES



PREMISES

Building: ± 6,134 SF
Land: ± 7,699 SF

RENT

Contact Broker

OCCUPANCY

Immediate

PARKING

6 Stalls On Site
Multiple Spots Available
Off Site

FEATURES

- Open Floor Plan
- High Ceilings
- Exposed Brick
- On-Site Parking
- ADA Restrooms With Full Height Stalls
- New HVAC System
- 600A 3-Phase Power

CONTACTS

Vaun Lennon
310.899.2713
vlennon@leewestla.com
AGT DRE 01993617

Robert Clifford
310.899.2725
rclifford@leewestla.com
AGT DRE 00999184

INTERIOR PHOTOS



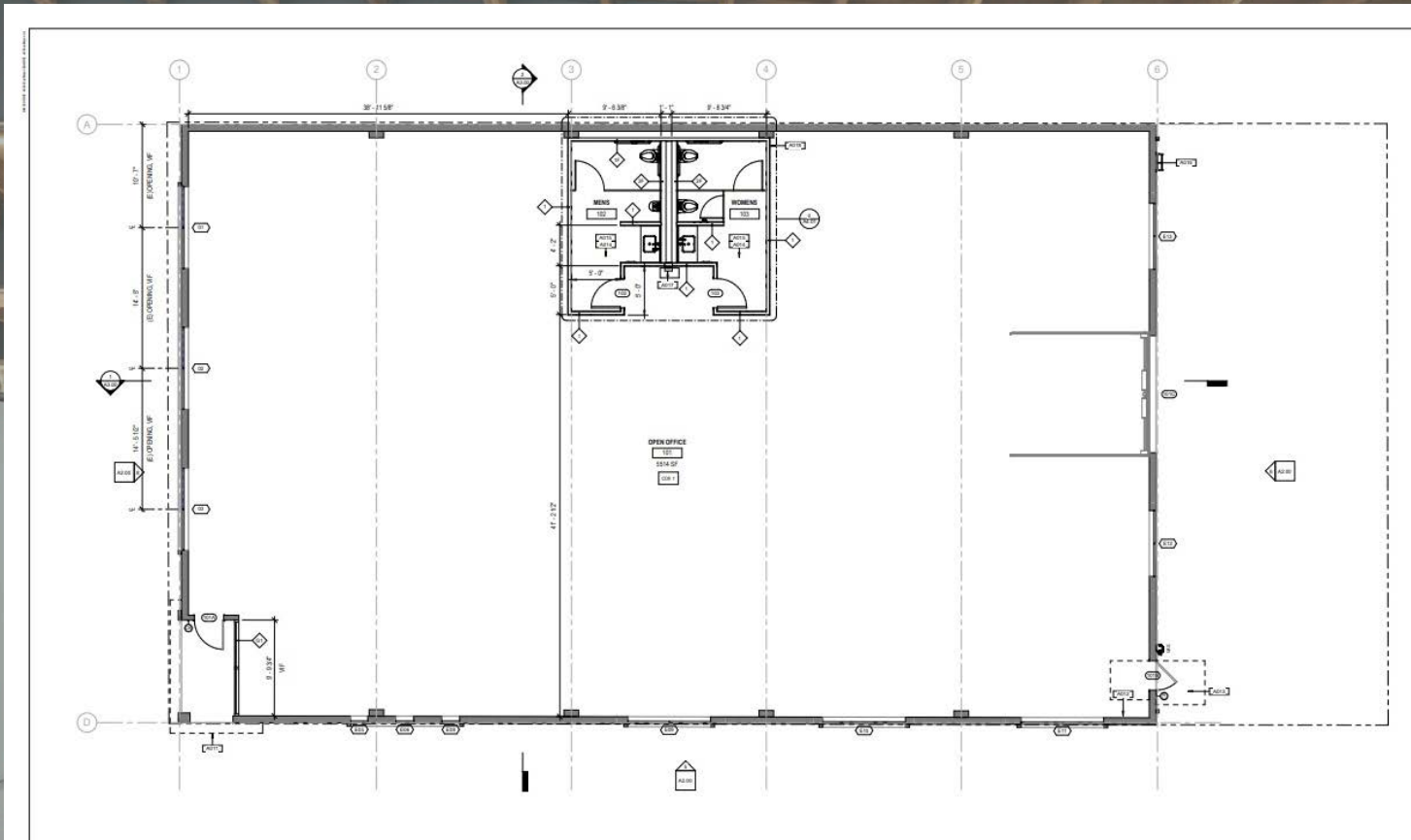
A DIVISION OF
LEE & ASSOCIATES

EXTERIOR PHOTOS



A DIVISION OF
L LEE &
ASSOCIATES

FLOOR PLAN



A DIVISION OF
LEE & ASSOCIATES

LOCAL AMENITIES



Cento



COLLINSFISHMARKET
Los Angeles
EST 1976



COMPARTÉS



FARMHOUSE KITCHEN
THAI CUISINE



HIGHLY
LIKELY
CAFÉ | WEST ADAMS



MIZ
LA
LA



Vicky's
ALL DAY



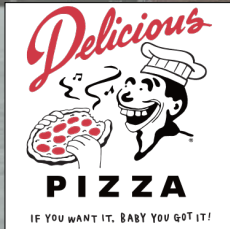
Vees Café



CHULITA
BOTANAS Y MEZCALES



Sweet E's
Bake Shop



JOHNNY'S
4327 WEST ADAMS
LOS ANGELES



B
TAQUERIA

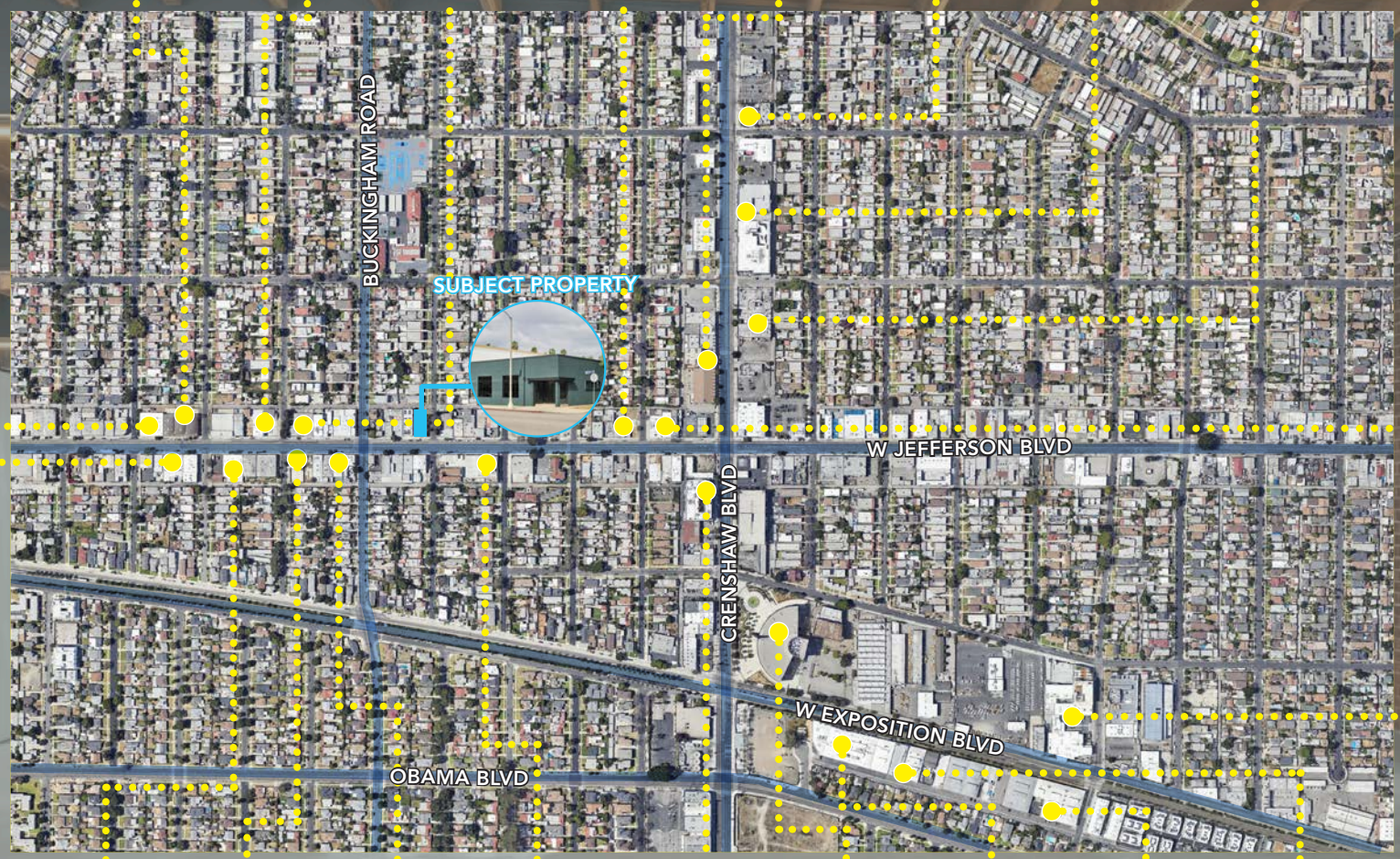


alta



LOCAL OFFICES & DEVELOPMENTS

- SOMESUCH
- MAYDAN
- PS 260
- SUPERPRIME
- PITFIRE PIZZA FOREVER *Coming Soon*
- Mixed Use Development 150,000 SF *Coming Soon*
- Three-Story Office Building *Coming Soon*
- ± 89,479 SF For Lease
- ±10,274 SF Event Venue Space For Lease *Coming Soon*
- POT



- HIGHLY LIKELY
- Mother
- High Wide & Handsome
- LOHA
- ±30,000 SF Building Under Construction For Lease LWLA
- ±52,481 SF New Development
- ONWARD & UPWARD
- GOAT
- RIOS
- ±29,759 SF Building For Lease
- FPM DEVELOPMENT, LLC

±30,000 SF Building Under Construction For Lease LWLA

±52,481 SF New Development

±29,759 SF Building For Lease

CONTACTS

VAUN LENNON
310.899.2713
vlennon@leewestla.com
AGT DRE 01993617

ROBERT CLIFFORD
310.899.2725
rclifford@leewestla.com
AGT DRE 00999184

Lee & Associates Los Angeles West, Inc.
1508 17th Street, Santa Monica, CA 90404
310.899.2700 | www.leewestla.com | DRE 01222000

No warranty or representation is made to the accuracy of the foregoing information.



A DIVISION OF
LEE & ASSOCIATES