

Grand River & Clessie Court Land

Lyon Township, MI 48165



FOR SALE

Get **Real** *quality*
248.476.3700

LISTED BY:

Mark Szerlag

Senior Partner

mszerlag@thomasduke.com

FOR SALE

Grand River & Clessie Court Land

Clessie Court Lyon Township, MI 48165



SALE PRICE - \$2,400,000.00

DESCRIPTION

Vacant Land for development.

PROPERTY HIGHLIGHTS

- Zoned I-1 Light Industrial.
- Will divide.
- Located in one of the fastest growing communities in the State of Michigan.
- Frontage on Grand River, Clessie Court and I-96

FOR SALE

Grand River & Clessie Court Land

Clessie Court Lyon Township, MI 48165

PROPERTY INFORMATION

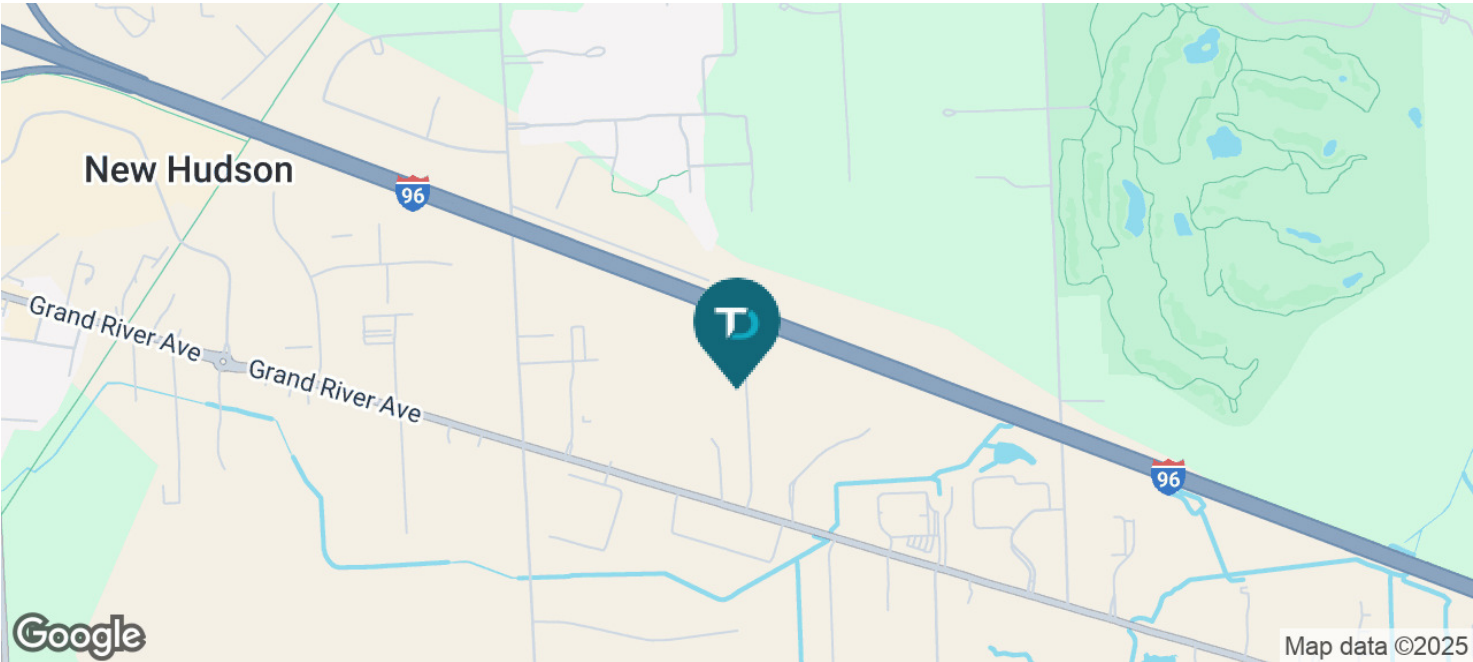
SALE PRICE:	\$2,400,000.00
Size:	12.80 Acres
Utilities:	Municipal Water & Sanitary Sewer
APN:	Parent Parcel - 21-02-376-021

PROPERTY INFORMATION

Property Type:	Vacant Land
Property Subtype:	Industrial
Zoning	I-1 Light Industrial
2024 Traffic Count:	Grand River = 13,113 I-96 = 108,234
Property Taxes:	Contact Listing Agent for details.

LOCATION INFORMATION

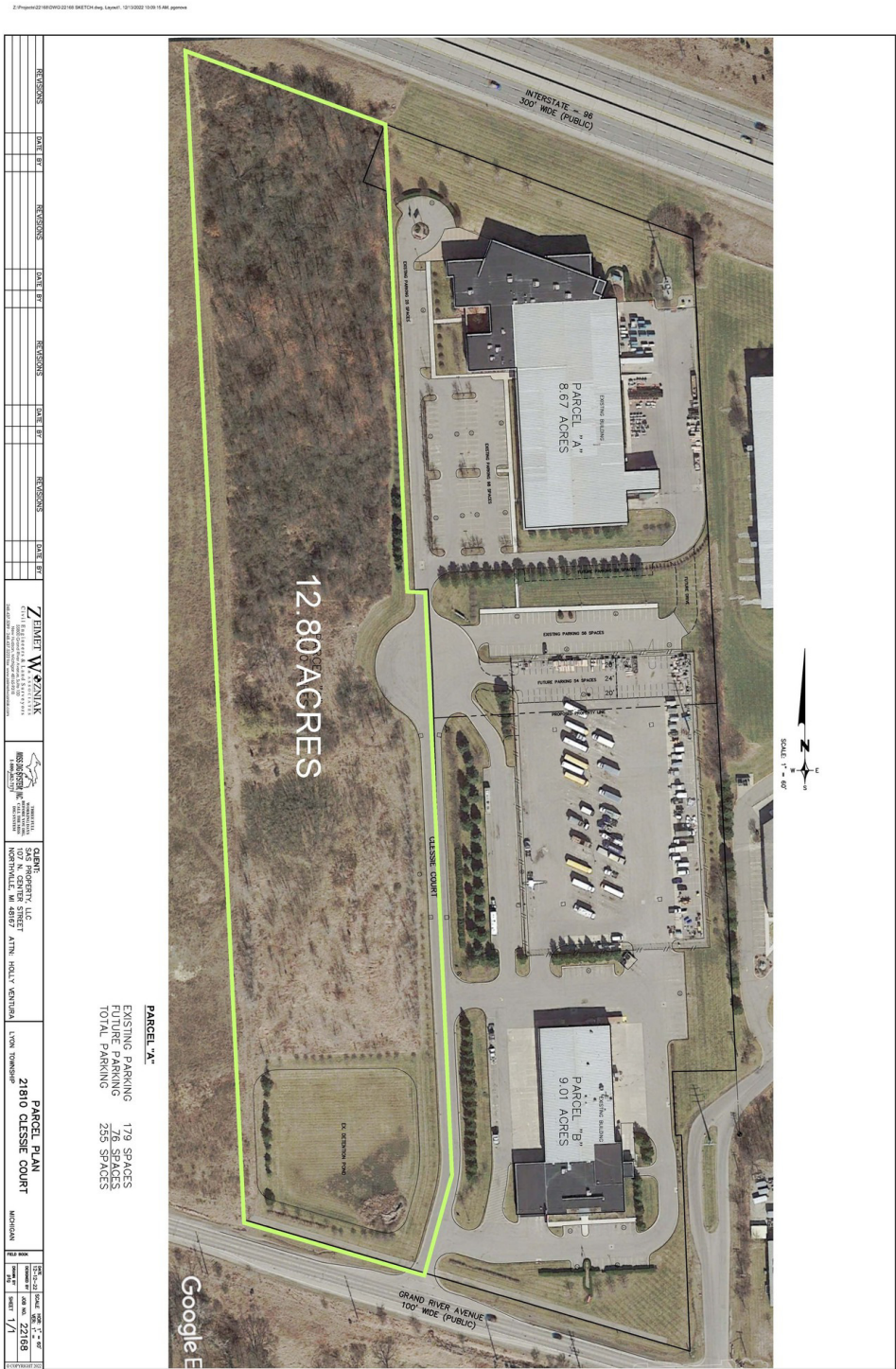
Located on the west side of Clessie Court, north off of Grand River, east of Milford Road.



FOR SALE

Grand River & Clessie Court Land

Clessie Court Lyon Township, MI 48165



Clessie Court Lyon Township, MI 48165



FOR SALE

Grand River & Clessie Court Land

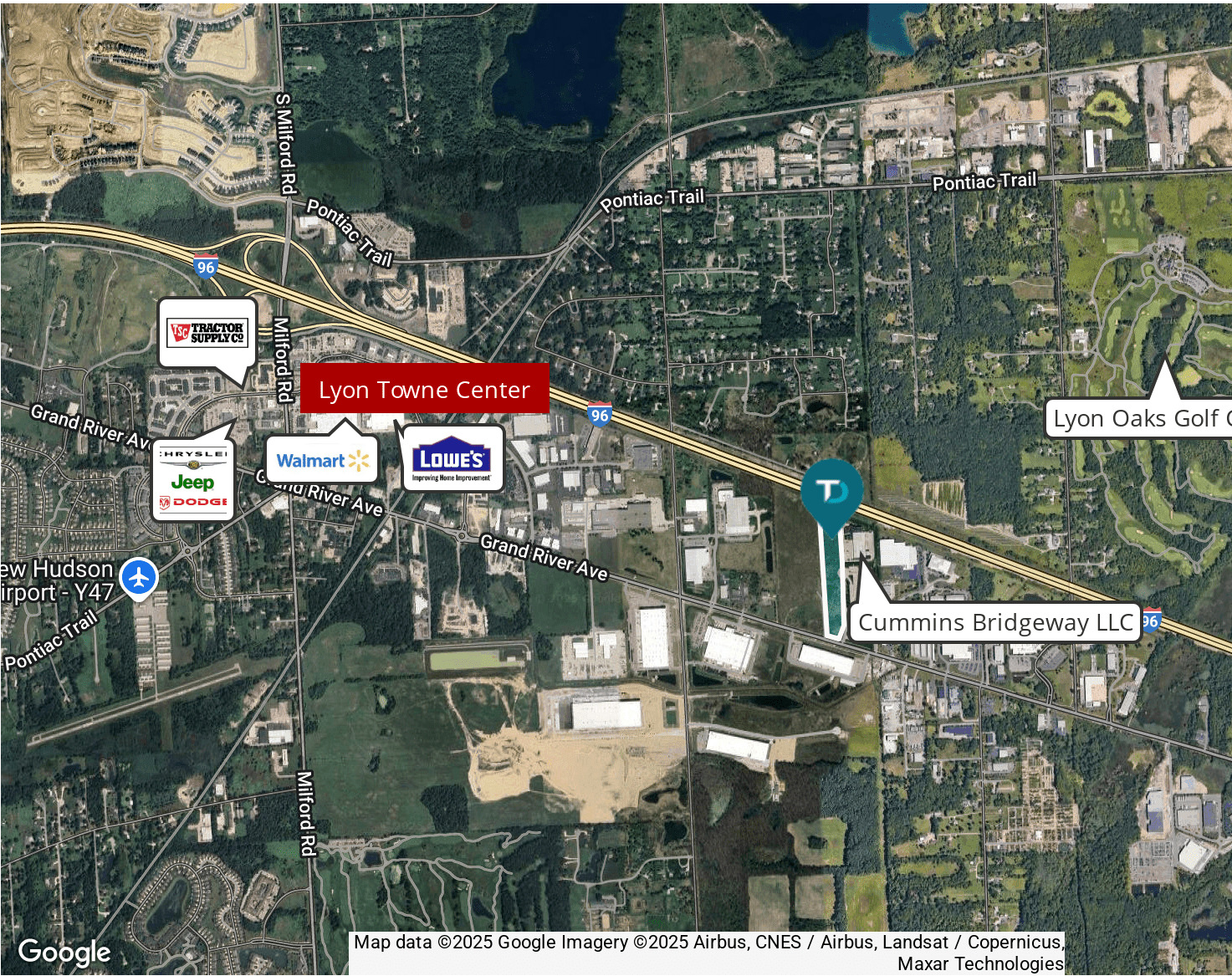
Clessie Court Lyon Township, MI 48165



FOR SALE

Grand River & Clessie Court Land

Clessie Court Lyon Township, MI 48165



DEMOGRAPHIC INFORMATION	1 MILE	3 MILES	5 MILES
Total population	517	15,905	74,226
Median age	41.3	38.4	39.2
Total households	198	6,093	30,382
Average HH income	\$152,855	\$112,578	\$109,612
Average house value	\$388,952	\$281,029	\$258,780

