

FOR SALE

12 UNITS + RETAIL SPACE NEAR DOWNTOWN PHOENIX

1609 WEST LATHAM STREET | \$1,900,000



EXCLUSIVELY LISTED BY:

LEO PATAQ

M: (602) 321-9040
leo.pataq@orionprop.com

ZACK MISHKIN

M: (602) 363-6363
zack.mishkin@orionprop.com



PROPERTY OVERVIEW

1609 West Latham Street - Phoenix, Arizona 85007

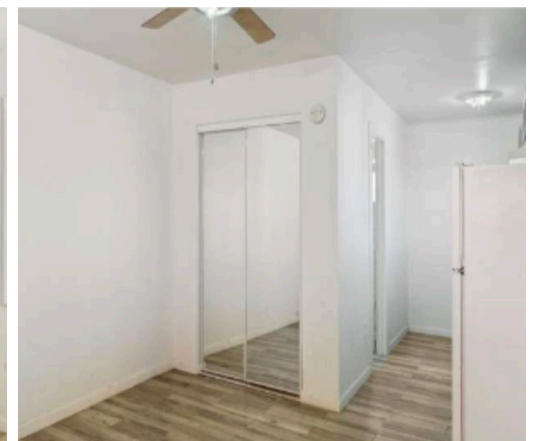
Parcel Numbers:
111-16-054, 111-16-056

PROPERTY HIGHLIGHTS

- ✓ Rare combination of multifamily and retail
- ✓ Centrally located near Downtown Phoenix
- ✓ Step-in income with room to increase
- ✓ Solid rental demand with potential for value-add upgrades
- ✓ Strong access to major freeways

UNIT MIX

Studio	5
1 Bed/1Bath	4
2 Bed/1 Bath	3
Retail Space/Potential Unit	1
Total	12 UNITS



LOCATION OVERVIEW

1609 West Latham Street - Phoenix, Arizona 85007

Parcel Numbers:
111-16-054, 111-16-056



FOR SALE

12 UNITS + RETAIL SPACE NEAR DOWNTOWN PHOENIX

1609 WEST LATHAM STREET

EXCLUSIVELY LISTED BY:

LEO PATAQ

M: (602) 321-9040
leo.pataq@orionprop.com

ZACK MISHKIN

M: (602) 363-6363
zack.mishkin@orionprop.com

ORION Investment Real Estate is a leading full-service brokerage firm based in the Southwestern United States that was founded in 2009. After several years of continued growth and success, and more than a billion dollar track record, The ORION team provides best-in-class service to the commercial real estate community. With an extensive knowledge of the market and properties, ORION uses a tailored marketing and structured approach to each client to unlock the potential of every deal. ORION continually outperforms its competition and delivers unprecedented value to our clients.



ORION Investment Real Estate
7150 East Camelback Road, Suite 425
Scottsdale, Arizona 85251