

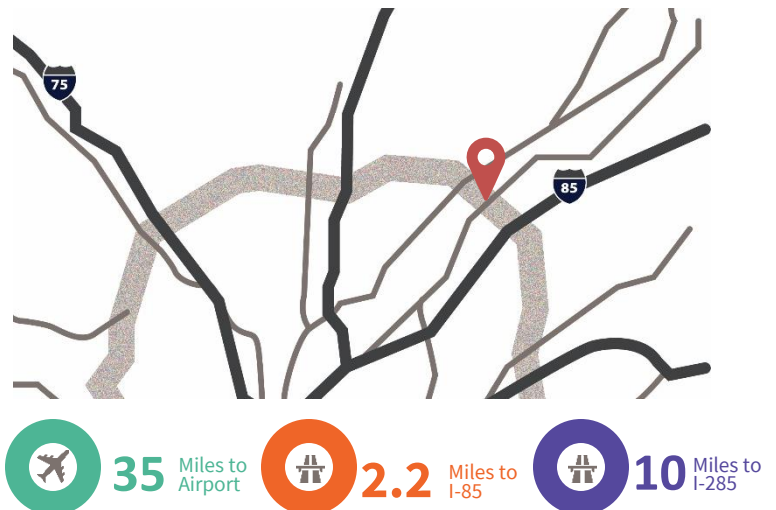


2605 N. Berkeley Lake Rd, Ste 600, Duluth, GA 30096

Opportunity

- 13,870 sf available
- 2,111 sf office space
- 190,380 total building size
- 30' clear height
- 250' building depth
- 2 DH, 1 DI
- ESFR Sprinkler System

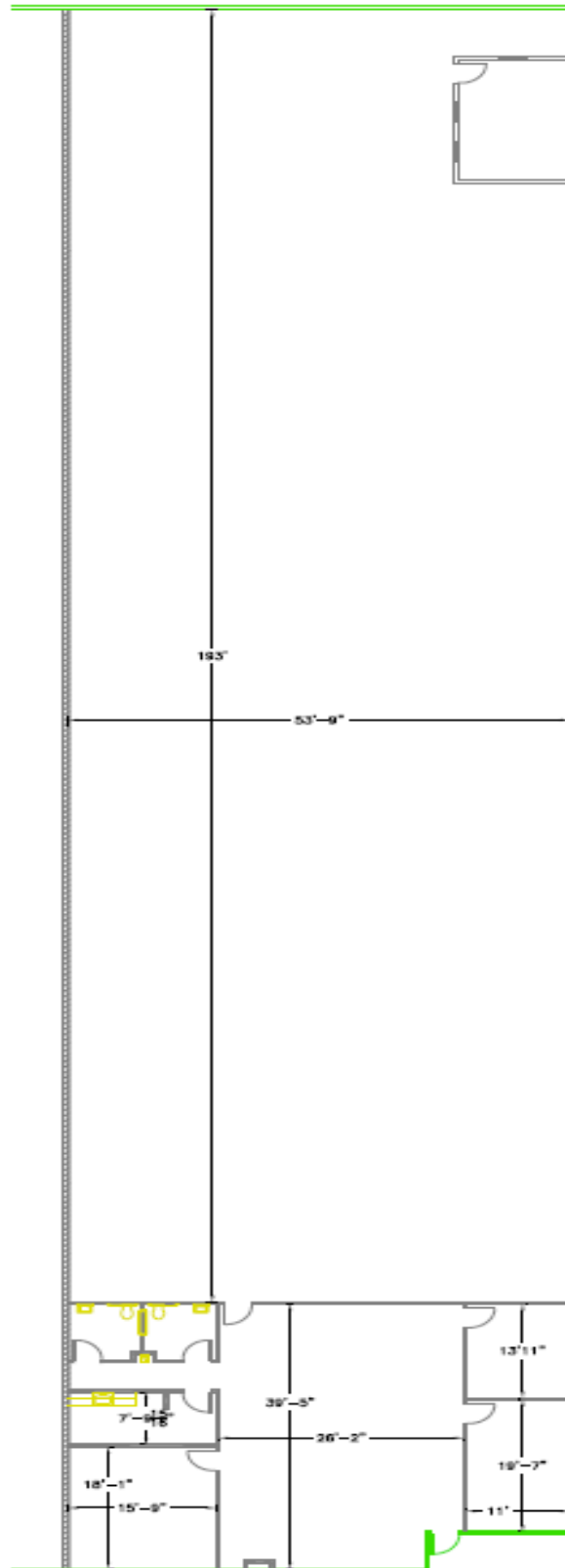
Location



**For further
information**

Chet Koenig
Principal
+1 770 916 6130

avisonyoung.com



For further information

Owned by:



Chet Koenig
Principal
+1 770 916 6130
chet.koenig@avisonyoung.com

