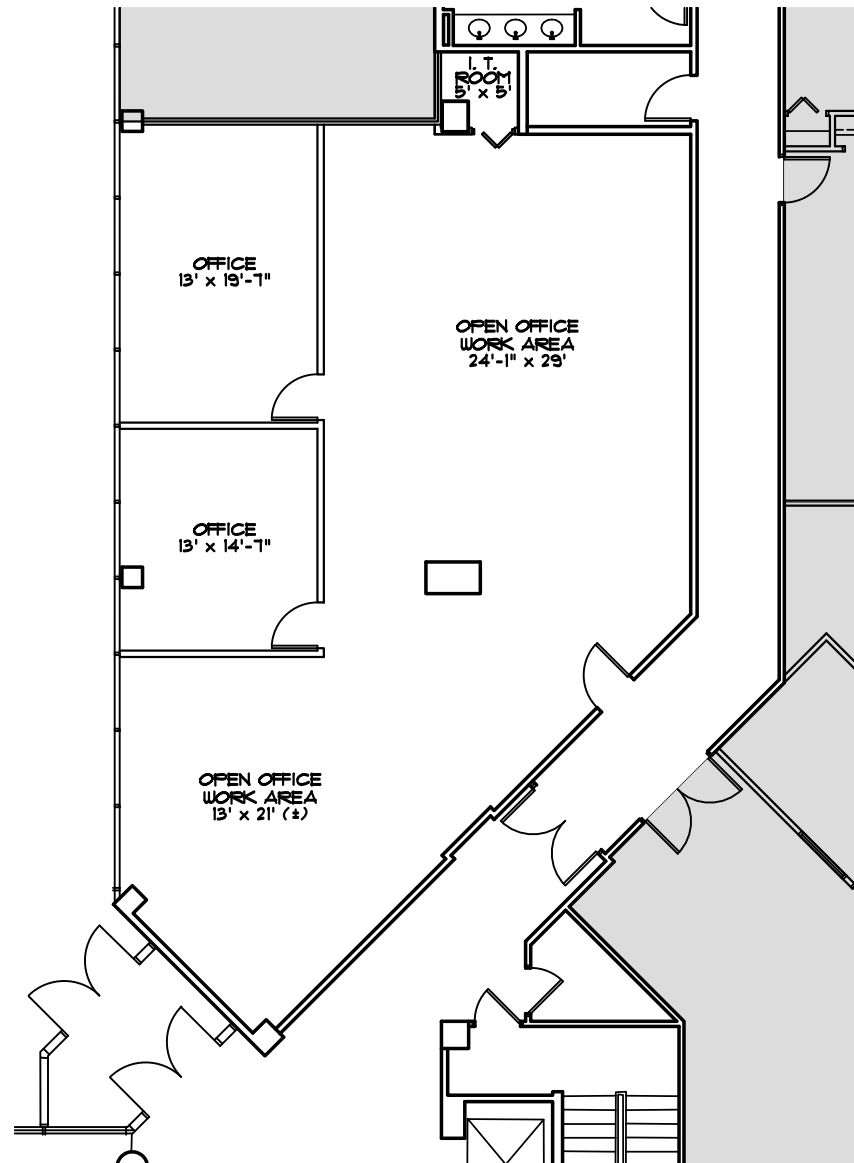
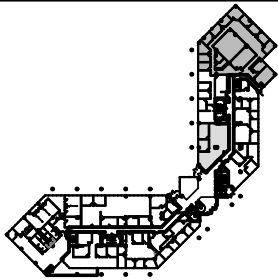


GENERAL NOTE

SUITE 115 = 2,052 RSF

NOTE: ALL ROOM DIMENSIONS ARE APPROXIMATE AND SHOULD BE FIELD VERIFIED FOR COMPLETE ACCURACY.

KEY PLAN



EIGHT NESHAMINY INTERPLEX
FIRST FLOOR - SUITE 115
TREVOSE, PA 19053



KORMAN COMMERCIAL PROPERTIES

EIGHT NESHAMINY INTERPLEX
SUITE 400, TREVOSE, PA 19053
PHONE: 215-244-5175 FAX: 215-245-6243

8
115