

24151 Ventura Blvd., Calabasas, CA 91302



the View



The Most Prestigious Office Address In Calabasas
Available For Sublease

Brian Forster

President

Direct: 818.862.2774

brian@pacificpartnerscre.com

CA BRE: 01093508

Lisa Shirliff

Investment Sales & Leasing

Direct: 818.878-8853

lisa@pacificpartnerscre.com

CA DRE: 01891301

The information herein has been furnished from sources which we deem reliable, but has not been verified by Pacific Partners Commercial, Inc. or its agents and for which we assume no liability. This marketing material is to be used for conceptual purposes only. All measurements and numerical data are approximate and to be verified by the prospective buyer.



PACIFIC PARTNERS
COMMERCIAL, INC.

23901 Calabasas Rd., Suite 2024

Calabasas, CA 91302

Office 818.862.2848

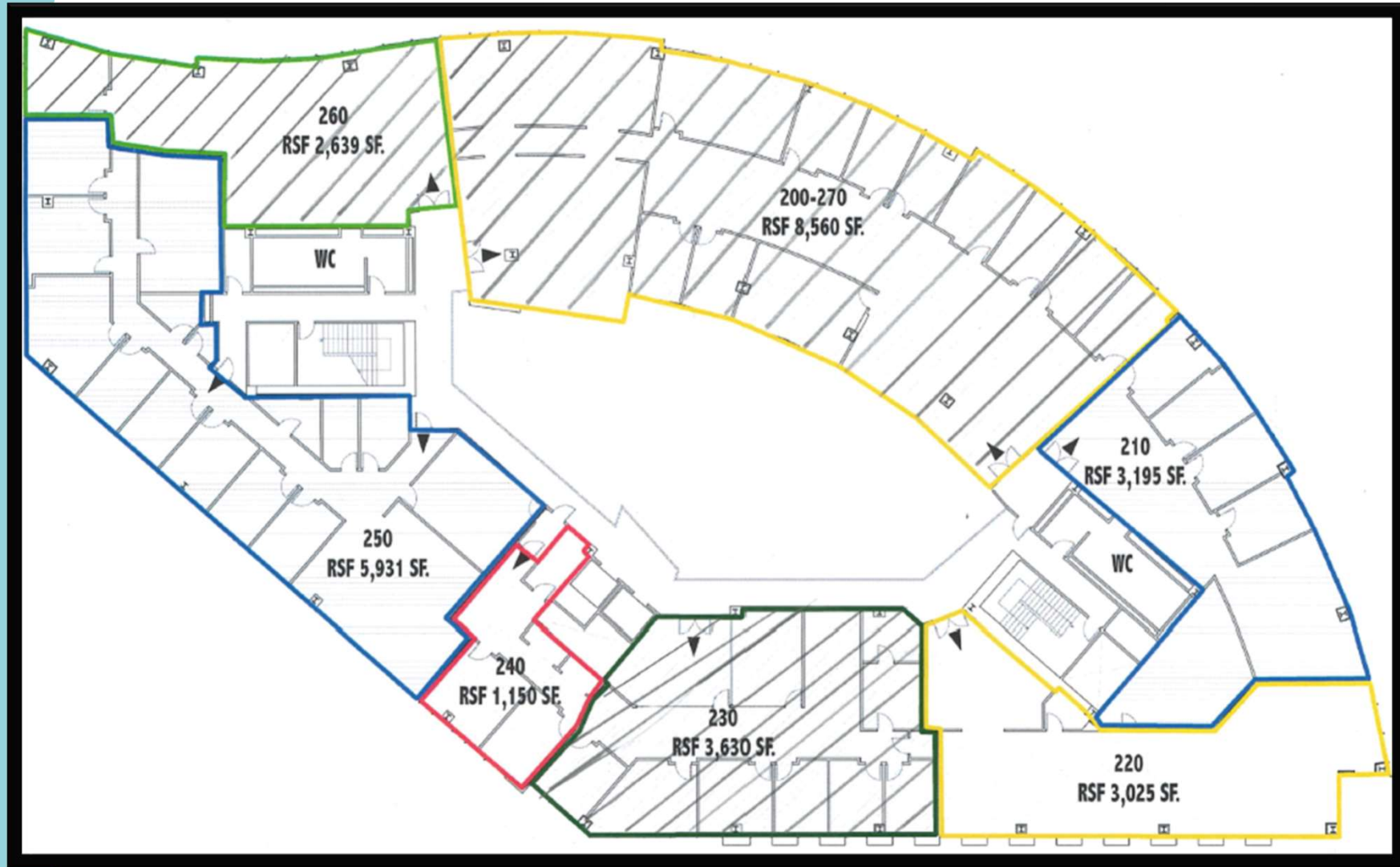
Suites for Sublease

Suite	SF	Rate	Notes
210	3,195	\$2.95	4 Window Offices, Open Work Area
220	3,025	\$2.95	Interior Office, Open Work Area
240	1,150	\$2.95	2 Window Offices, Open Work Area
250	5,930	\$2.95	8 Window Offices, 2 Interior Offices, Media Room, Open Work Area
300	11,139	\$3.50	May be demised to 5,570 sf

"As-Is" 2nd Floor Sublease rate until 01/31/26
"As-Is" 3rd Floor Sublease rate until 03/31/27

24151 Ventura Boulevard, Calabasas

Availabilities - 2nd Floor



Availabilities - 3rd Floor North



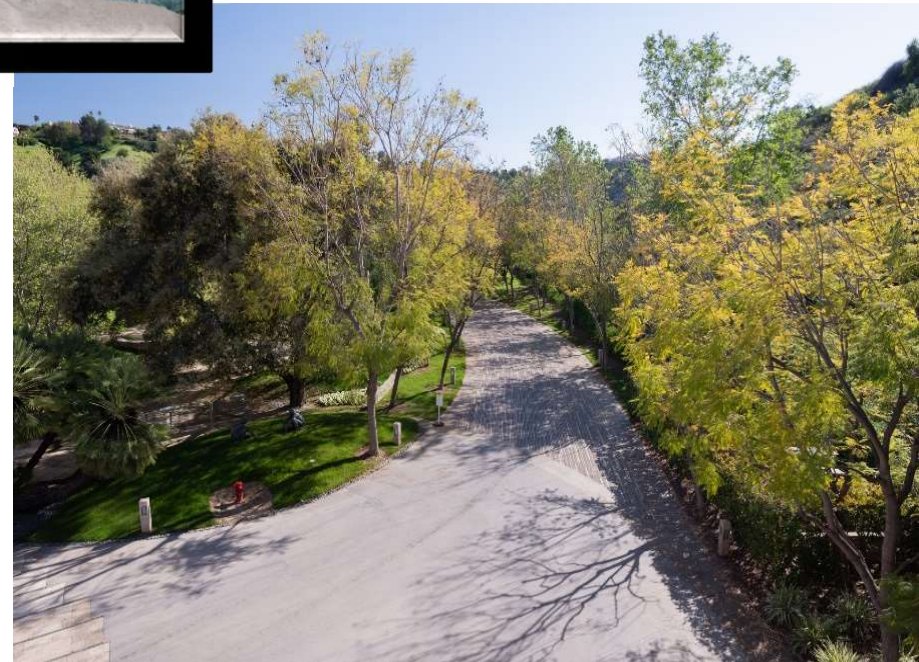
Property Highlights



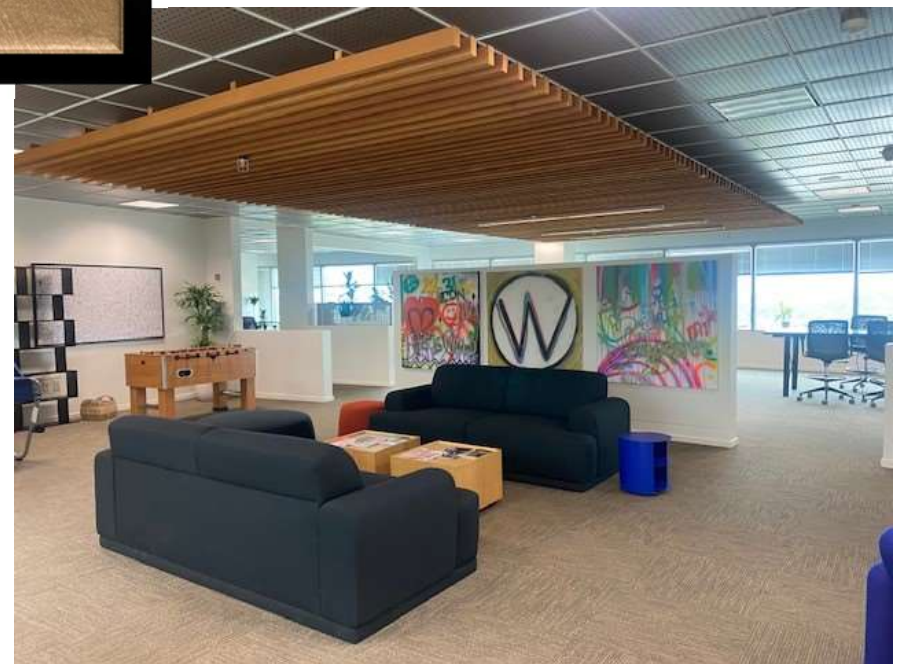
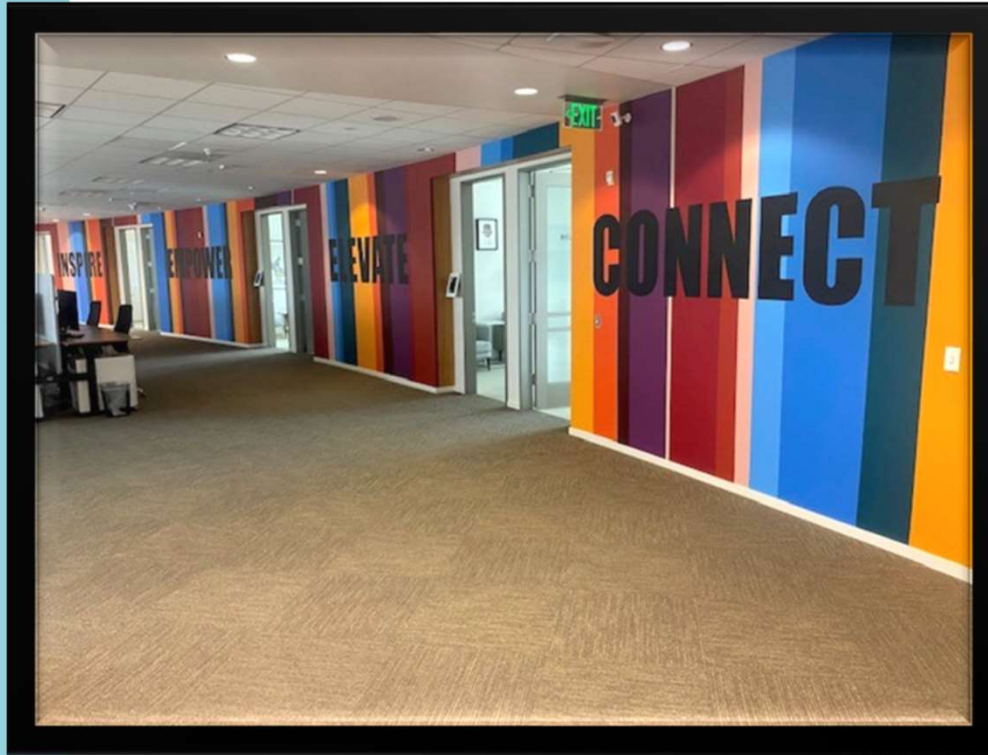
- No gross receipts tax
- State of the art building security
- On-Site dining/food service and recreation center
- Covered parking garage
- Excellent freeway access
- Stunning views of the San Fernando Valley
- Amazing gardens in a park-like setting
- Short drive to The Commons at Calabasas, open-air shopping and dining.

24151 Ventura Boulevard, Calabasas

Building Photos



Suite Photos



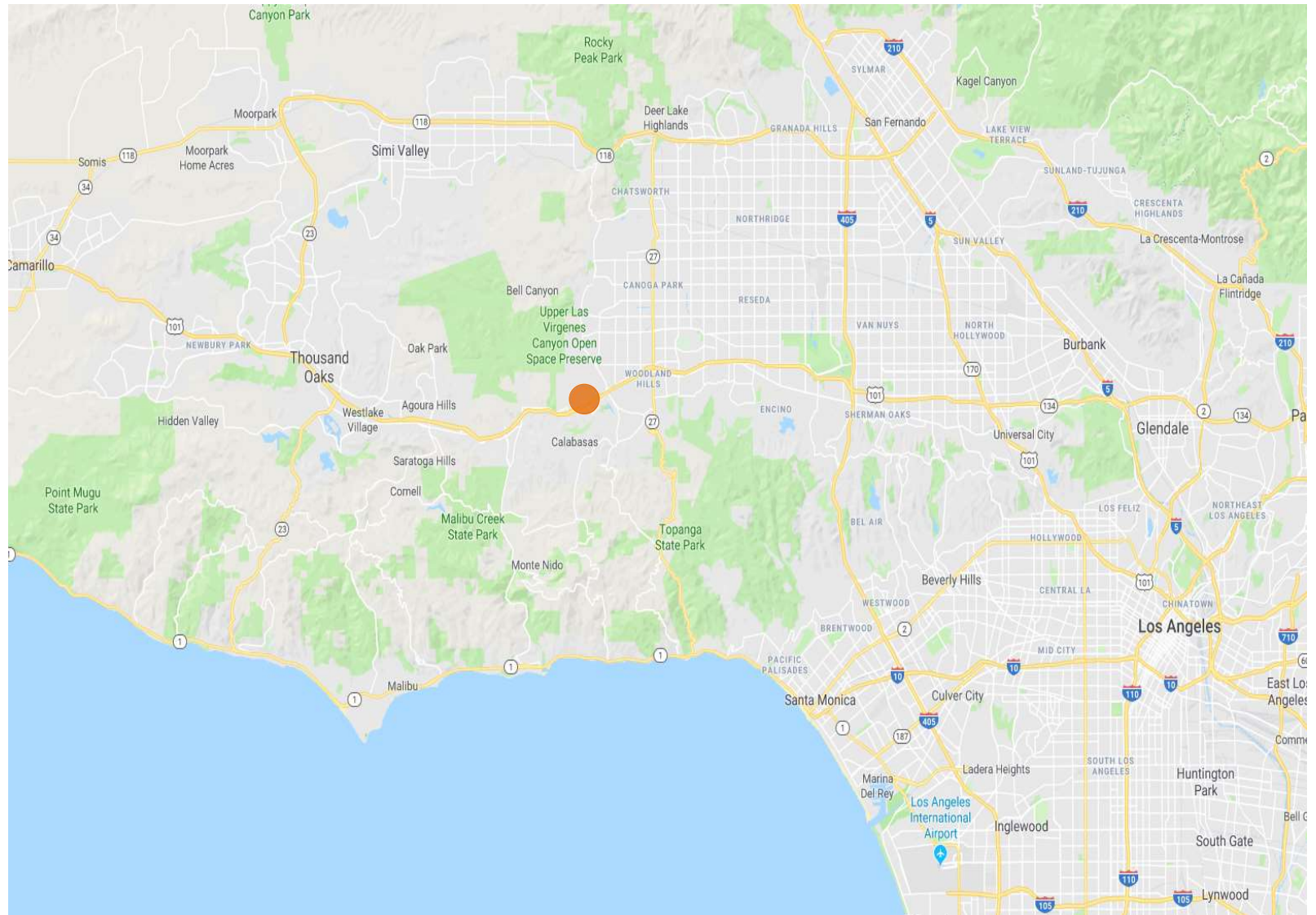
Suite Photos



the View, Calabasas



Map Overview



● 24151 Ventura Boulevard

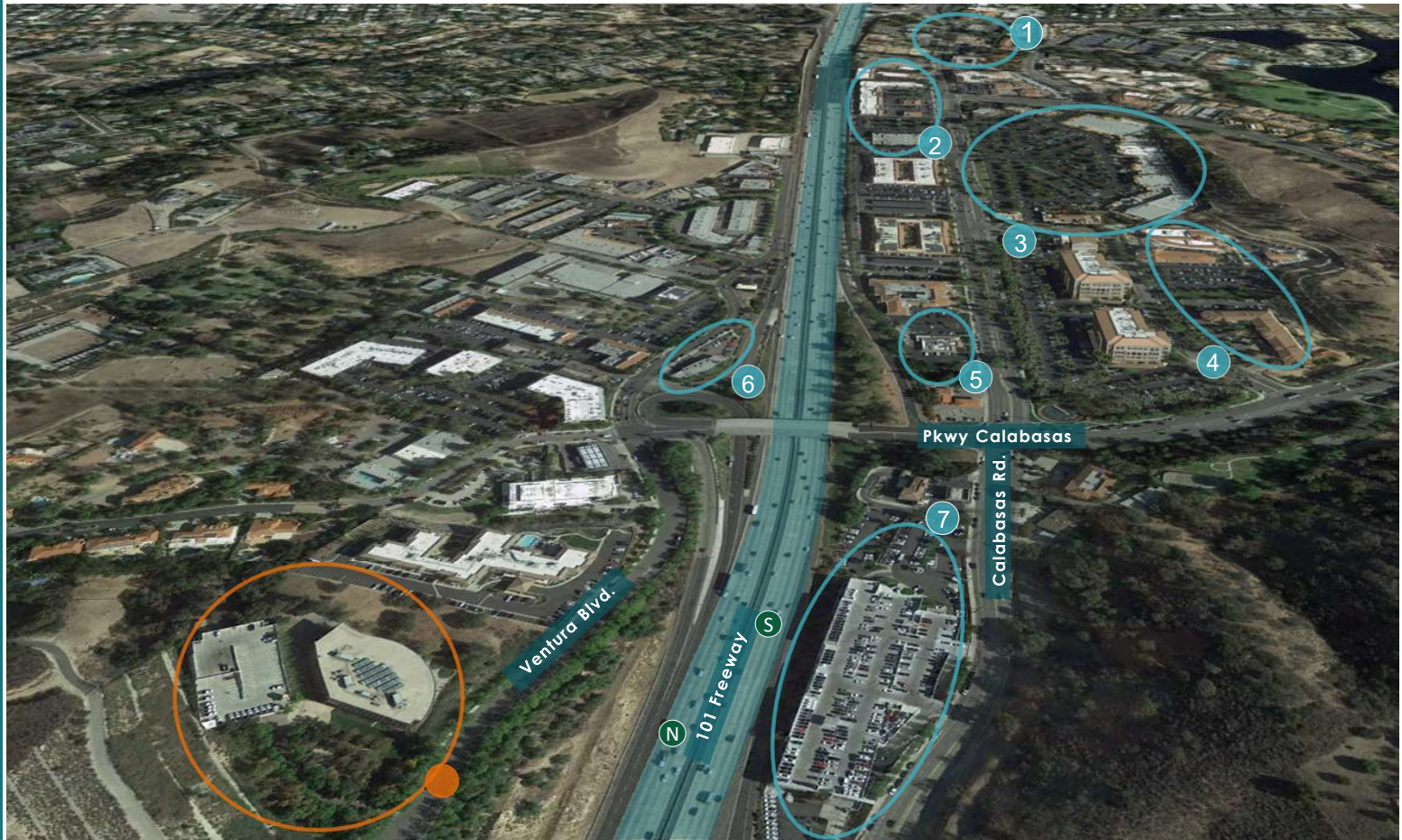
Pacific Partners Commercial
23901 Calabasas Rd., Suite 2024
Calabasas, CA 91302
info@pacificpartnerscre.com
Office 818.862.2848






Property VICINITY ▶▶


1. Bristol Farms, Pedaler's Fork, The Six, Sagebrush Cantina, Health Nut, Starbucks
2. Trader Joe's, The Coffee Bean & Tea Leaf, The Stand, Rosti, Wells Fargo, Bank of America
3. Calabasas Commons, King's Fish House, Sugarfish, Toscanova, Sun Life Organics, Le Pain Quotidien, Marmalade
4. Calabasas City Hall, Hilton Garden Inn
5. Lovi's Delicatessen
6. Harley Davidson of Calabasas
7. Mercedes Benz of Calabasas



MAP LEGEND:

 = Property Listing

 = Roadway Access

 = Local Business

Brian Forster

President
Direct: 818.862.2774
brian@pacificpartnerscre.com
CA BRE: 01093508

Lisa Shirtliff

Investment Sales & Leasing
Direct: 818.878-8853
lisa@pacificpartnerscre.com
CA BRE: 01891301

Pacific Partners Commercial

23901 Calabasas Rd., Suite 2024
Calabasas, CA 91302
info@pacificpartnerscre.com
Office 818.862.2848

