

FOR LEASE

OFFICE WAREHOUSE

253 & 267 W 2950 S
SOUTH SALT LAKE CITY, UT

JONAH HORNSBY, CCIM
JONAH@ACRESUTAH.COM
801.580.4945

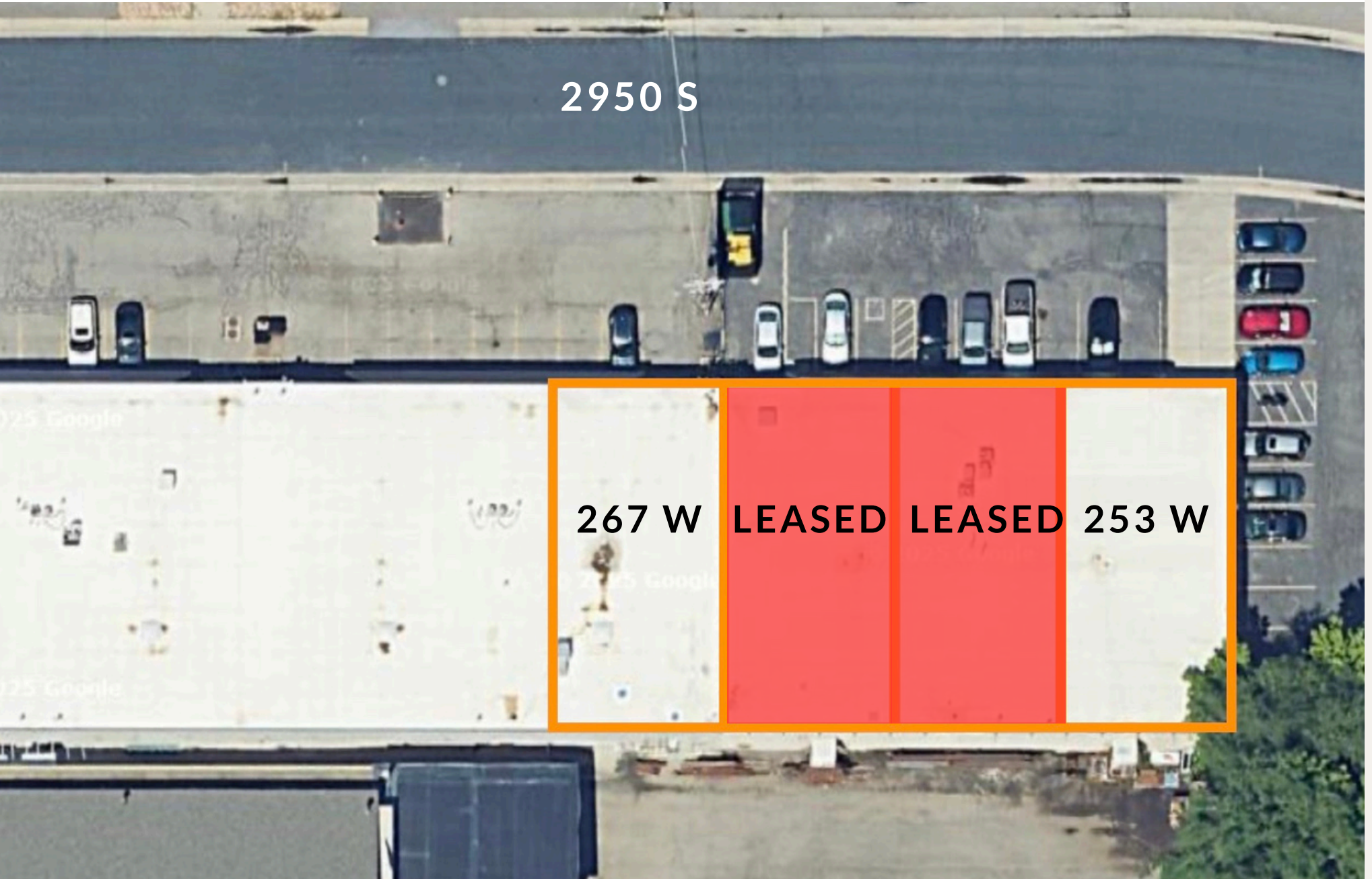
ALIGN
COMPLETE REAL ESTATE SERVICES

PROPERTY DETAILS

Address	253 and 267 W 2950 S
City, State	South Salt Lake City, UT
Space Available	3,800 - 7,400 SF
Building Size	15,200 SF
Site Size	.31 of an acre
Year Built	1985
Zoning	TOD Overlay
Power	208V 3 Phase
Fire Suppression	No
Lease Rate	\$0.95 /SF/MO
Lease Type	NNN
Clear Height	14'
CAM Fees	\$0.20/SF/MO
Grade Level Doors	1 - 10'X12' Each Unit



SITE PLAN



2950 S

267 W LEASED LEASED 253 W

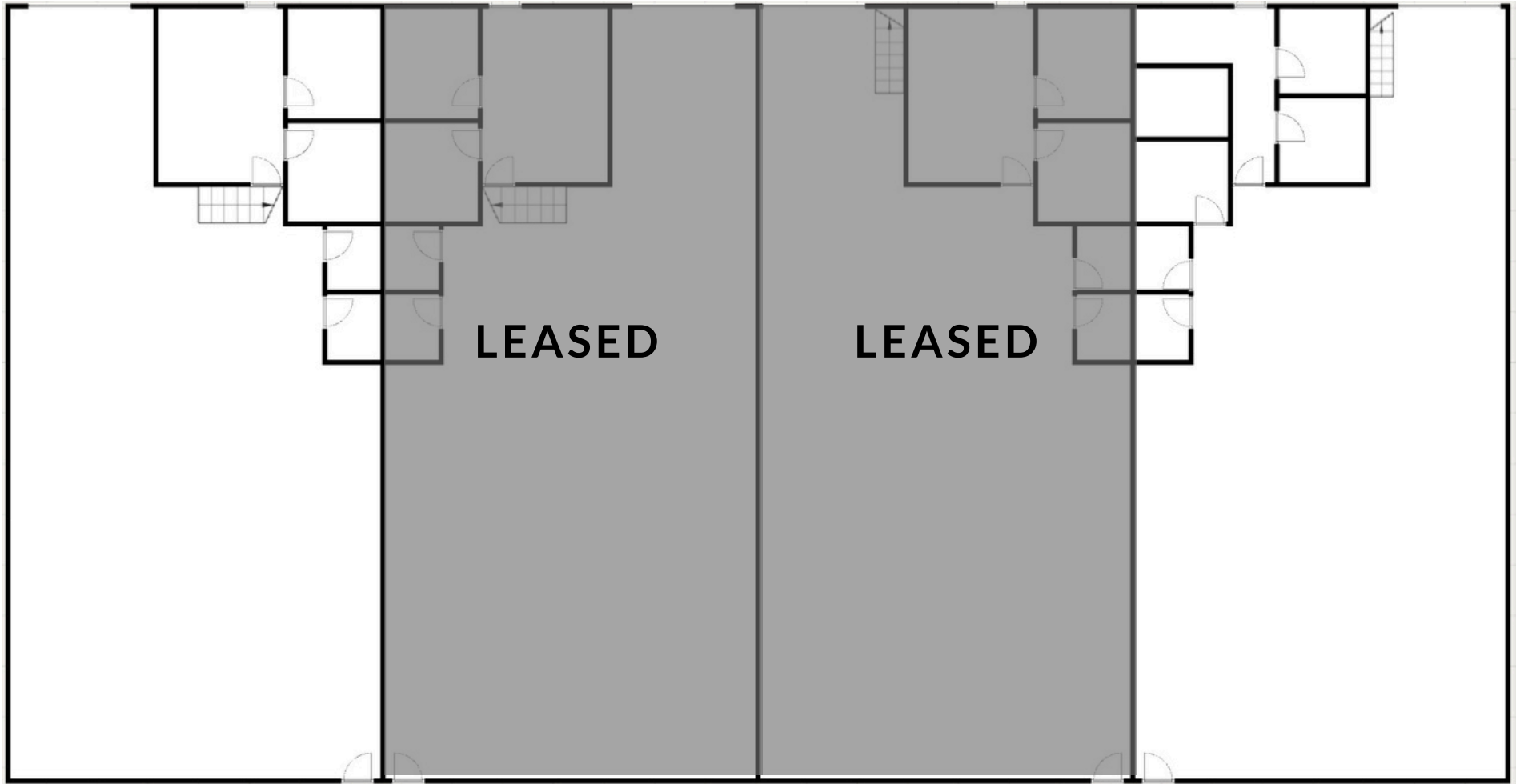
FLOOR PLAN

267 W

263 W

257 W

253 W



LOCAL AREA MAP







CONTACT

JONAH HORNSBY, CCIM
Jonah@acresutah.com
801.580.4945

ALIGN
COMPLETE REAL ESTATE SERVICES