

# 40TH STREET MEDICAL PLAZA

16601 N 40TH STREET, PHOENIX, AZ 85032



Medical Space

AVAILABLE FOR LEASE

 Transwestern

# PROPERTY DETAILS

## Availabilities

SUITE 101: ±2,779 SF

SUITE 115 - 129: ±2,643 SF

SUITE 218: ±1,061 SF

SUITE 222: ±1,081 SF

SUITE 227: ±2,174 SF

## Rent Rate:

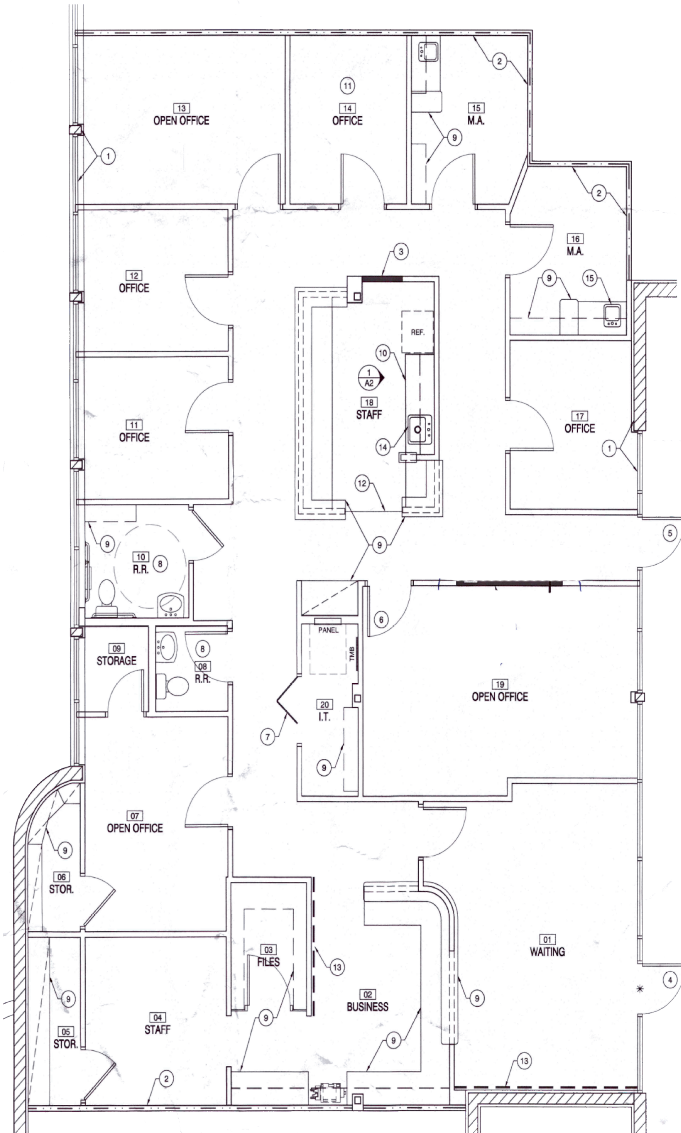
\$18.00 NNN + 3% ANNUAL  
ESCALATIONS

## Highlights

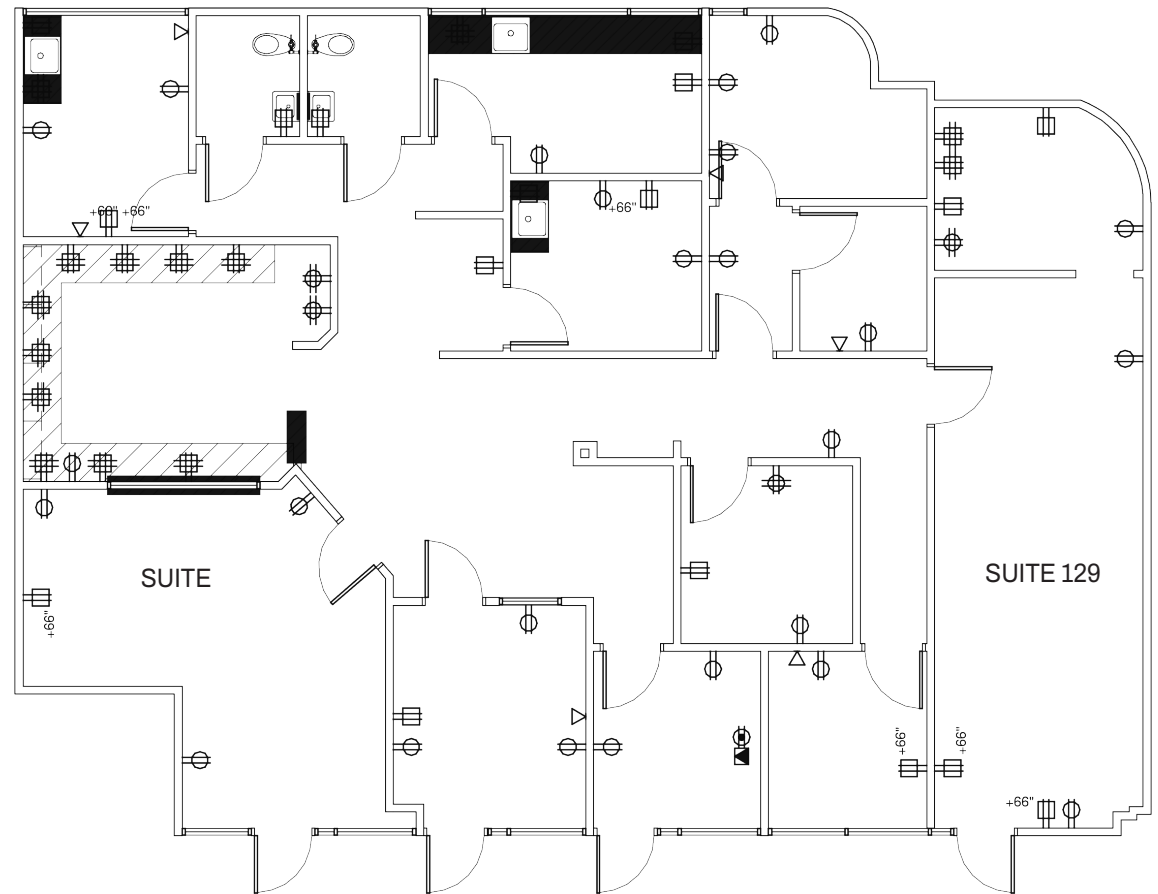
- MONUMENT SIGNAGE AVAILABLE
- CLOSE PROXIMITY TO ABRAZO  
SCOTTSDALE HOSPITAL CAMPUS
- EASY ACCESS TO 51 FREEWAY
- COVERED, RESERVED PARKING



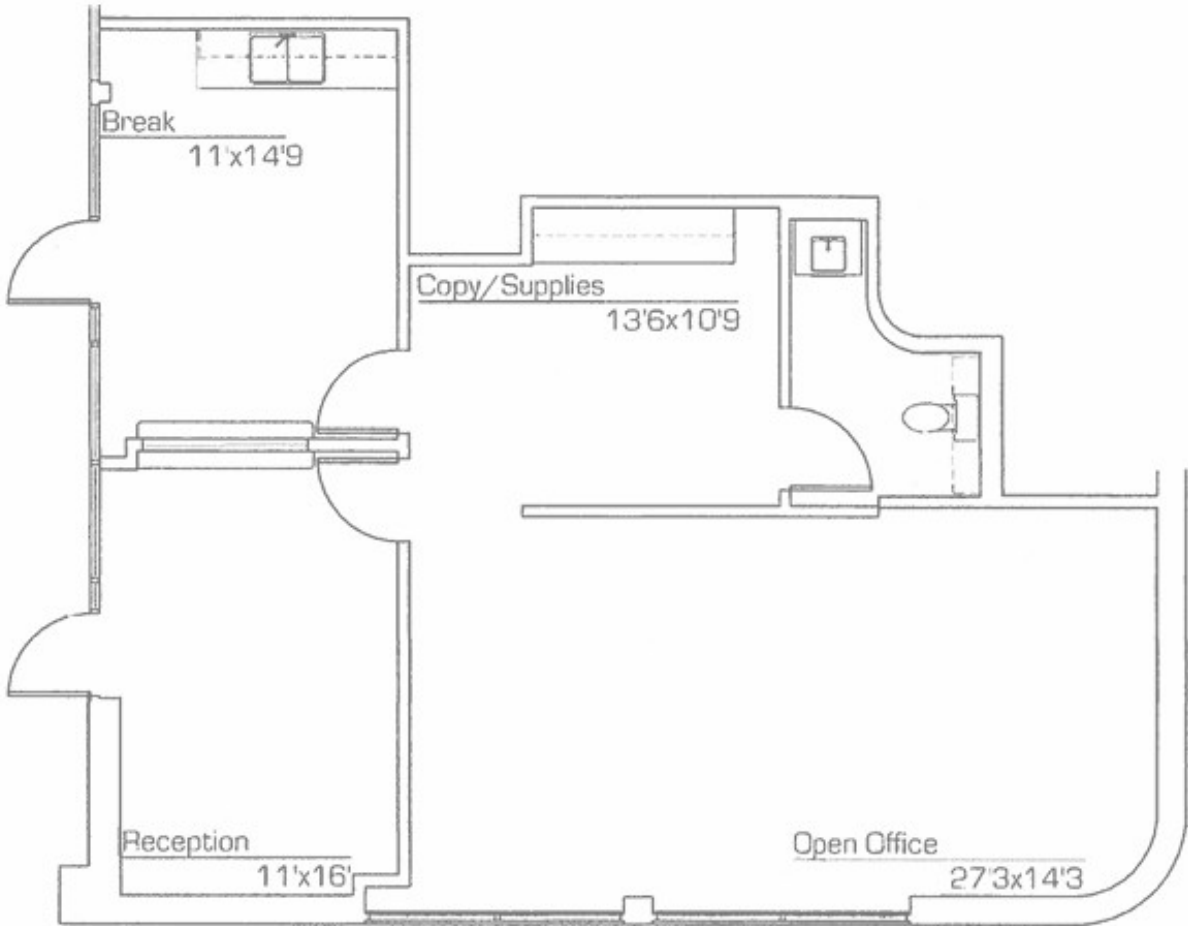
SUITE 101 : ±2,779 SF



SUITE 115-129: ±2,643 SF

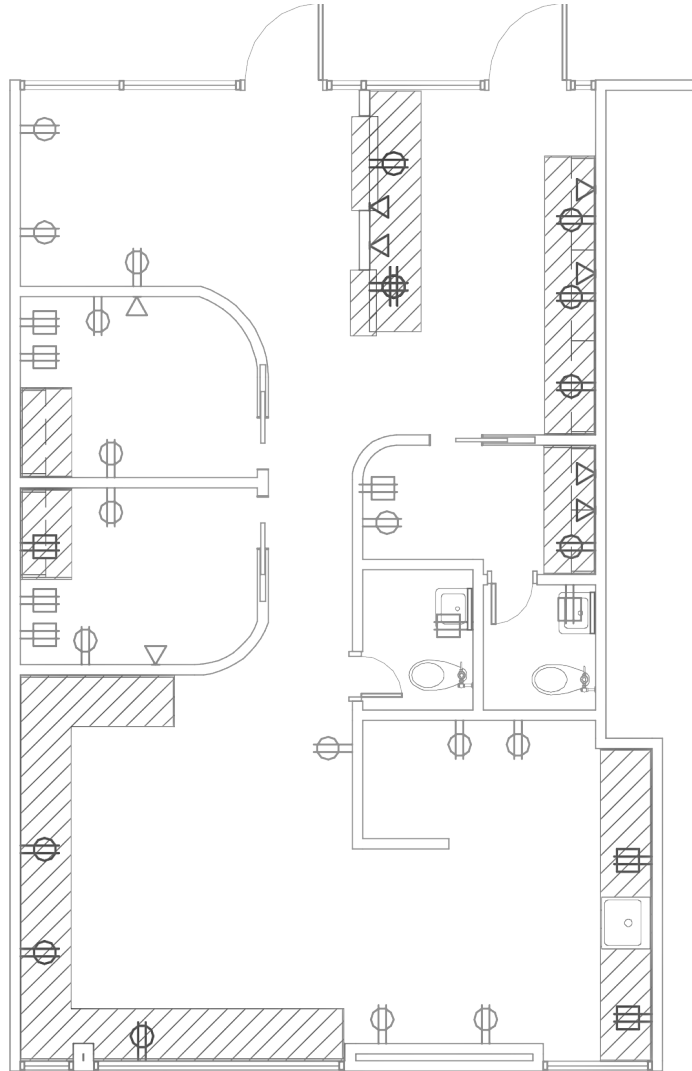


SUITE 218: ±1,061 SF

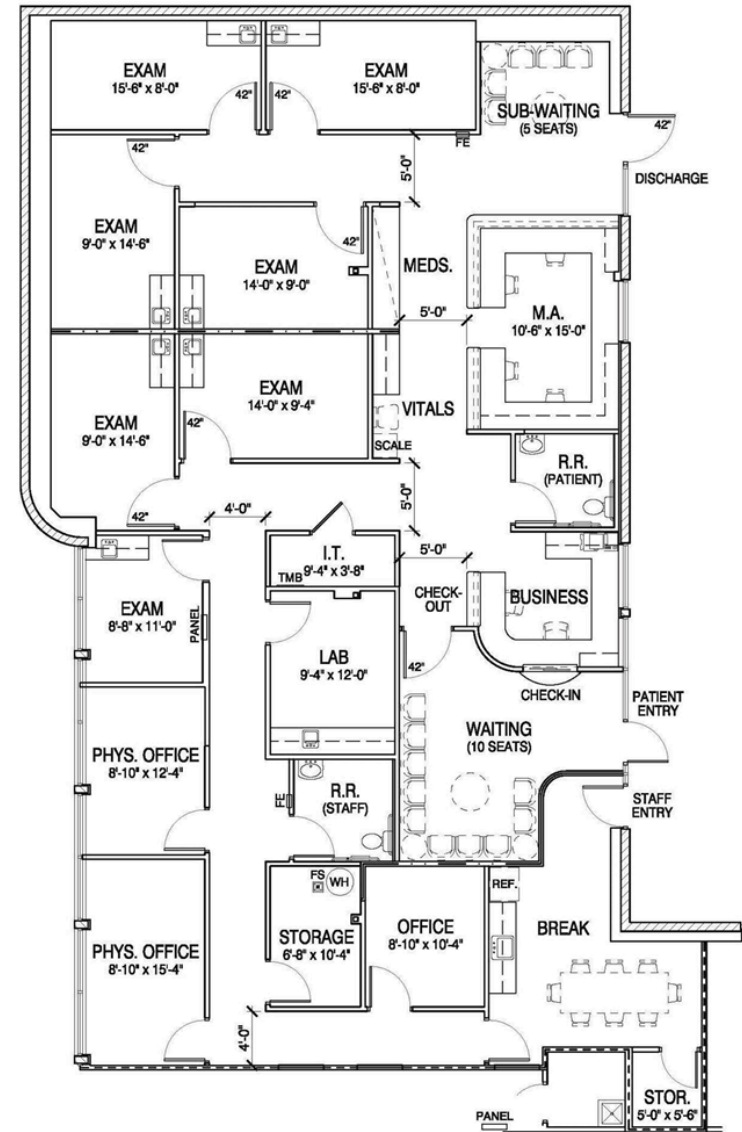


# FLOORPLAN 2ND FLOOR

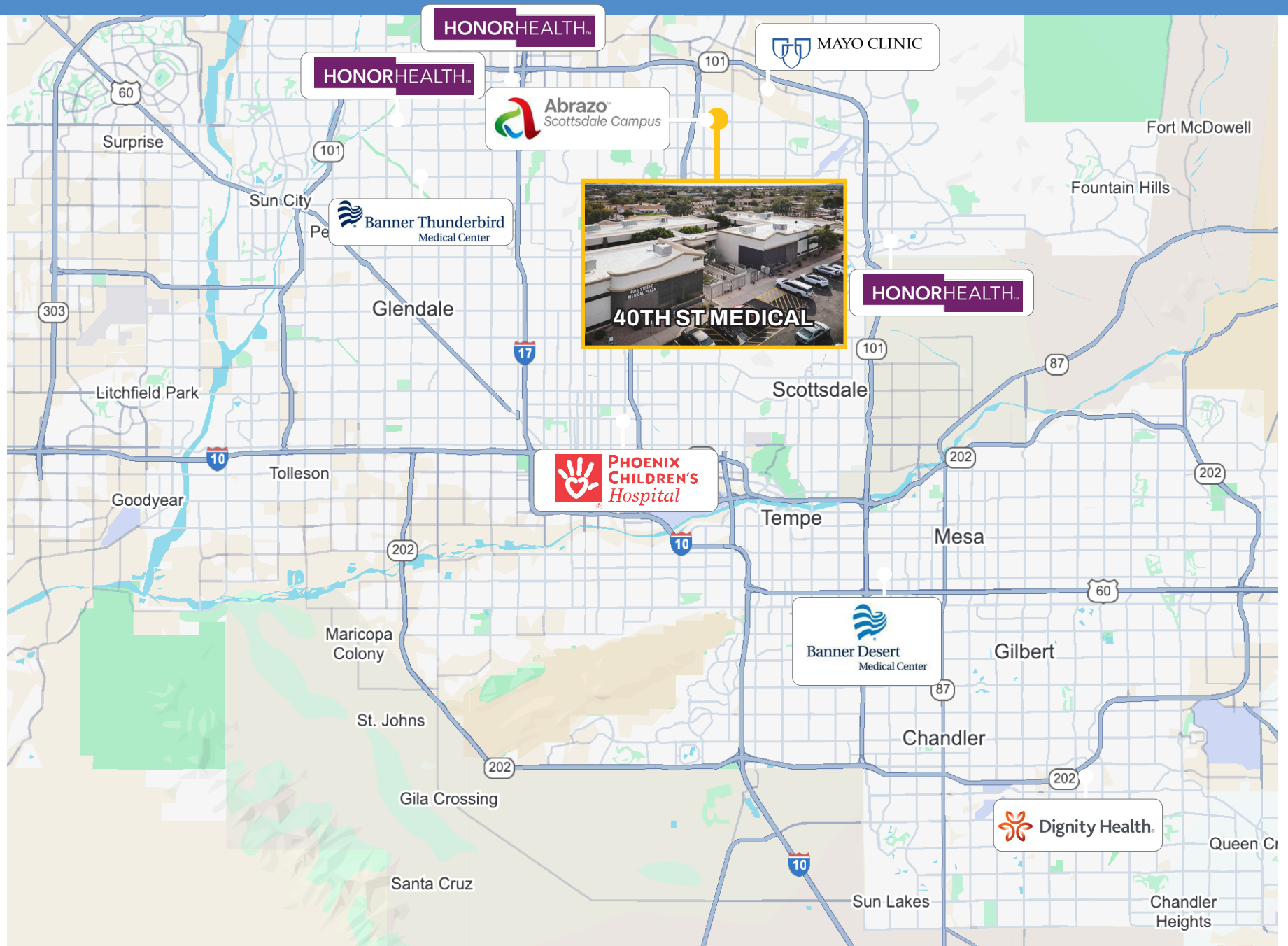
SUITE 222 : ±1,081 SF



SUITE 227 : ±2,174 SF



# NEARBY HOSPITALS





# 40TH STREET MEDICAL PLAZA

16601 N 40TH STREET, PHOENIX, AZ 85032

**KATHLEEN MORGAN**

Managing Director

T (602) 809-1048

[Kathleen.morgan@transwestern.com](mailto:Kathleen.morgan@transwestern.com)

**KEVIN SMIGIEL**

Vice President

T (602) 550-9295

[Kevin.smigiel@transwestern.com](mailto:Kevin.smigiel@transwestern.com)

**VINCE FEMIANO**

Managing Director

T (602) 791-3310

[Vince.femiano@transwestern.com](mailto:Vince.femiano@transwestern.com)

**ANDREW OLIVET**

Associate

T (602) 370-2685

[Andrew.olivet@transwestern.com](mailto:Andrew.olivet@transwestern.com)

The information provided herein was obtained from sources believed reliable; however, Transwestern makes no guarantees, warranties or representations as to the completeness or accuracy thereof. The presentation of this property is submitted subject to errors, omissions, change of price or conditions, prior sale or lease, or withdrawal without notice. Copyright © 2025 Transwestern

