

FOR LEASE SOUTH PARK LOCATION

543-545 2nd STREET
SAN FRANCISCO, CA



RELIANCE
REAL ESTATE ADVISORS

Joe Harney DRE # 01327392
415.235.8214

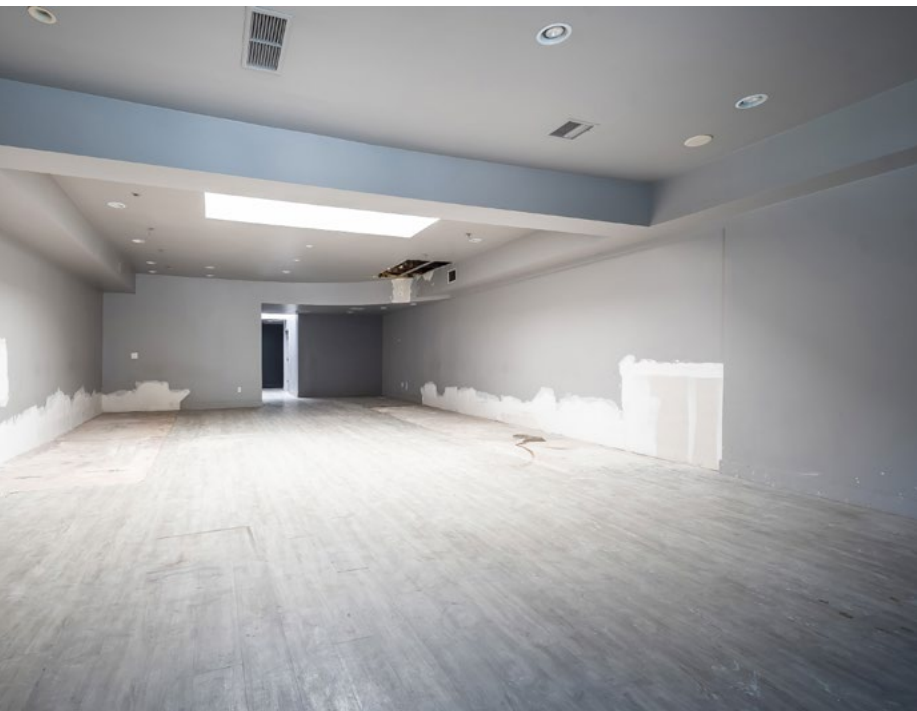
RREA.CO
02200870



543 2nd Street
San Francisco, CA
2,000 ± square feet
\$10,000/month, IG

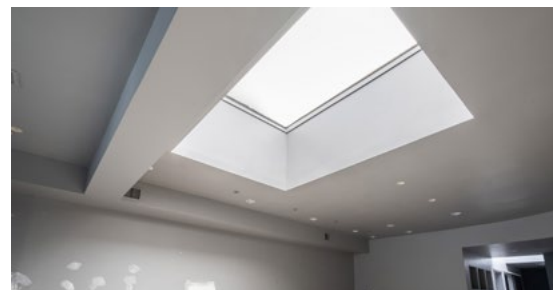


545 2nd Street
San Francisco, CA
1,200 ± square feet
Plus 800 ± sqft patio
\$6,000/month, IG



FEATURES

South Park location
Excellent public transportation
Single identity buildings
Can be leased together
or separately



AVAILABLE
Now



RELIANCE
REAL ESTATE ADVISORS

Joe Harney DRE # 01327392
415.235.8214

RREA.CO
02200870