

# FOR LEASE: 8,640 SF SINGLE TENANT INDUSTRIAL BUILDING

1711 E. Jackson St. | Phoenix, AZ 85034

## OVER SIZED GRADE LEVEL LOADING



### PROPERTY HIGHLIGHTS

BUILDING SF: 8,640	COLUMN SPACING: 30' x 40'
OFFICE SF: ±1,000	FIRE SPRINKLERS: .6/2000 SF
CLEAR HEIGHT: 18'	POWER: 400 AMPS
DRIVE INS: 2 (16' x 16')	PARKING: 21 STALLS
DOCKS: 1 EXTERNAL	DIMENSIONS: 80' X 110'
W.H. COOLING: EVAP	CONSTRUCTION TYPE: INSULATED METAL PANEL
MISC: AIR LINES   PAINT BOOTH	ZONING: A-2



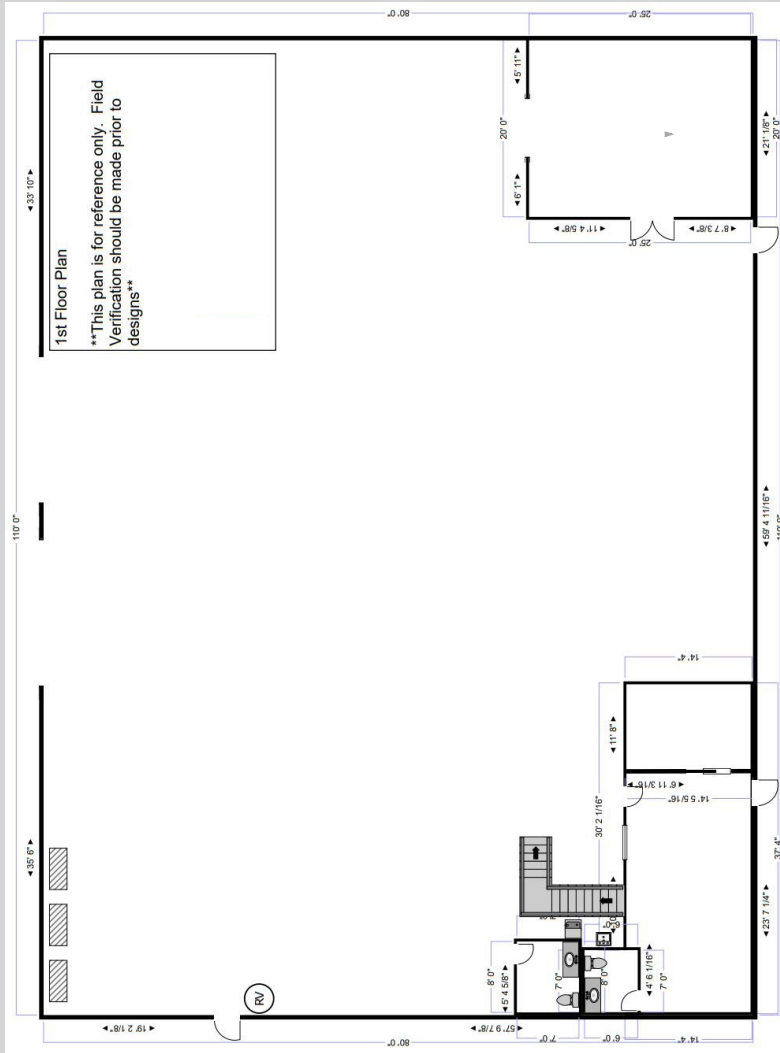
**Gary Anderson**  
Executive Director  
+1 602 224 4439  
gary.anderson@cushwake.com

**Nik Vallens**  
Director  
+1 949 981 7725  
nik.vallens@cushwake.com

2555 East Camelback Road, Suite 400  
Phoenix, AZ 85016  
direct +1 602 954 9000  
fax +1 602 468 8588  
[cushmanwakefield.com](http://cushmanwakefield.com)

# FOR LEASE: 8,640 SF SINGLE TENANT INDUSTRIAL BUILDING

1711 E. Jackson St. | Phoenix, AZ 85034



**Gary Anderson**  
Executive Director  
+1 602 224 4439  
gary.anderson@cushwake.com

**Nik Vallens**  
Director  
+1 949 981 7725  
nik.vallens@cushwake.com

2555 East Camelback Road, Suite 400  
Phoenix, AZ 85016  
direct + 1 602 954 9000  
fax +1 602 468 8588  
[cushmanwakefield.com](http://cushmanwakefield.com)

# FOR LEASE: 8,640 SF SINGLE TENANT INDUSTRIAL BUILDING

1711 E. Jackson St. | Phoenix, AZ 85034



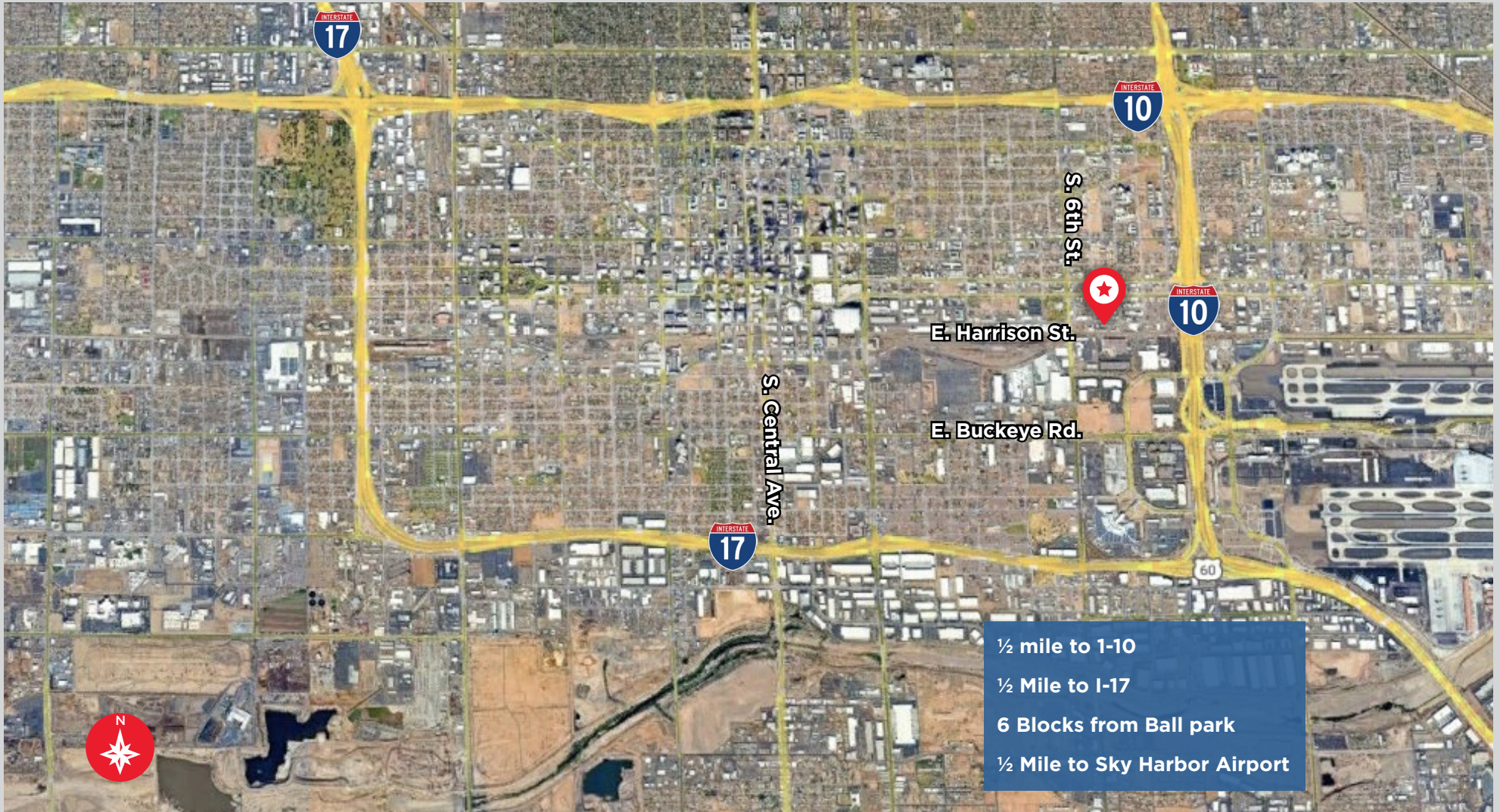
**Gary Anderson**  
Executive Director  
+1 602 224 4439  
gary.anderson@cushwake.com

**Nik Vallens**  
Director  
+1 949 981 7725  
nik.vallens@cushwake.com

2555 East Camelback Road, Suite 400  
Phoenix, AZ 85016  
direct +1 602 954 9000  
fax +1 602 468 8588  
cushmanwakefield.com

# FOR LEASE: 8,640 SF SINGLE TENANT INDUSTRIAL BUILDING

1711 E. Jackson St. | Phoenix, AZ 85034



**Gary Anderson**  
Executive Director  
+1 602 224 4439  
gary.anderson@cushwake.com

**Nik Vallens**  
Director  
+1 949 981 7725  
nik.vallens@cushwake.com

2555 East Camelback Road, Suite 400  
Phoenix, AZ 85016  
direct +1 602 954 9000  
fax +1 602 468 8588  
[cushmanwakefield.com](http://cushmanwakefield.com)