

NEW PRICE

\$549,000



Office Flex Condo For Sale

4749 BENNETT DRIVE SUITE F, LIVERMORE, CA

SIZE

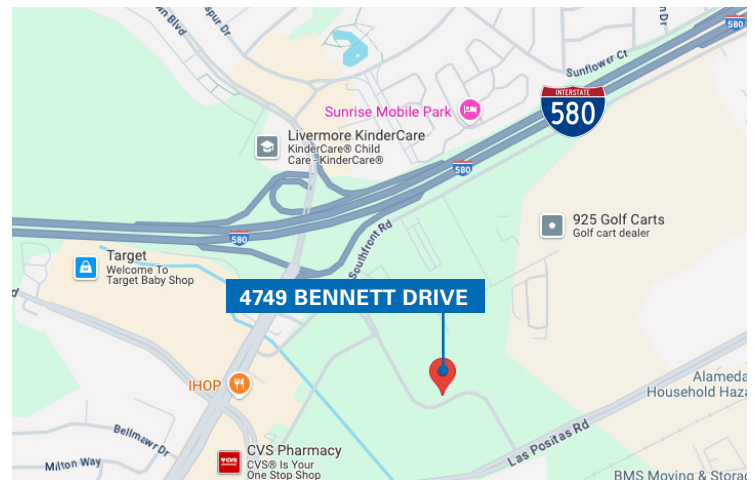
±2,692 RSF

SALE PRICE

\$549,000

PROPERTY HIGHLIGHTS

- 100% HVAC throughout
- Parking ratio: 2.8/1,000
- Easy access to I-580 through First Street
- Plentiful amenities nearby



For information, please contact:

Dave Bruzzone

Managing Director

t 925.858.2440

David.Bruzzone@nmrk.com

CA RE# 01103408

Nelson Roberts

Associate

t 925.210.8741

Nelson.Roberts@nmrk.com

CA RE# 02109703

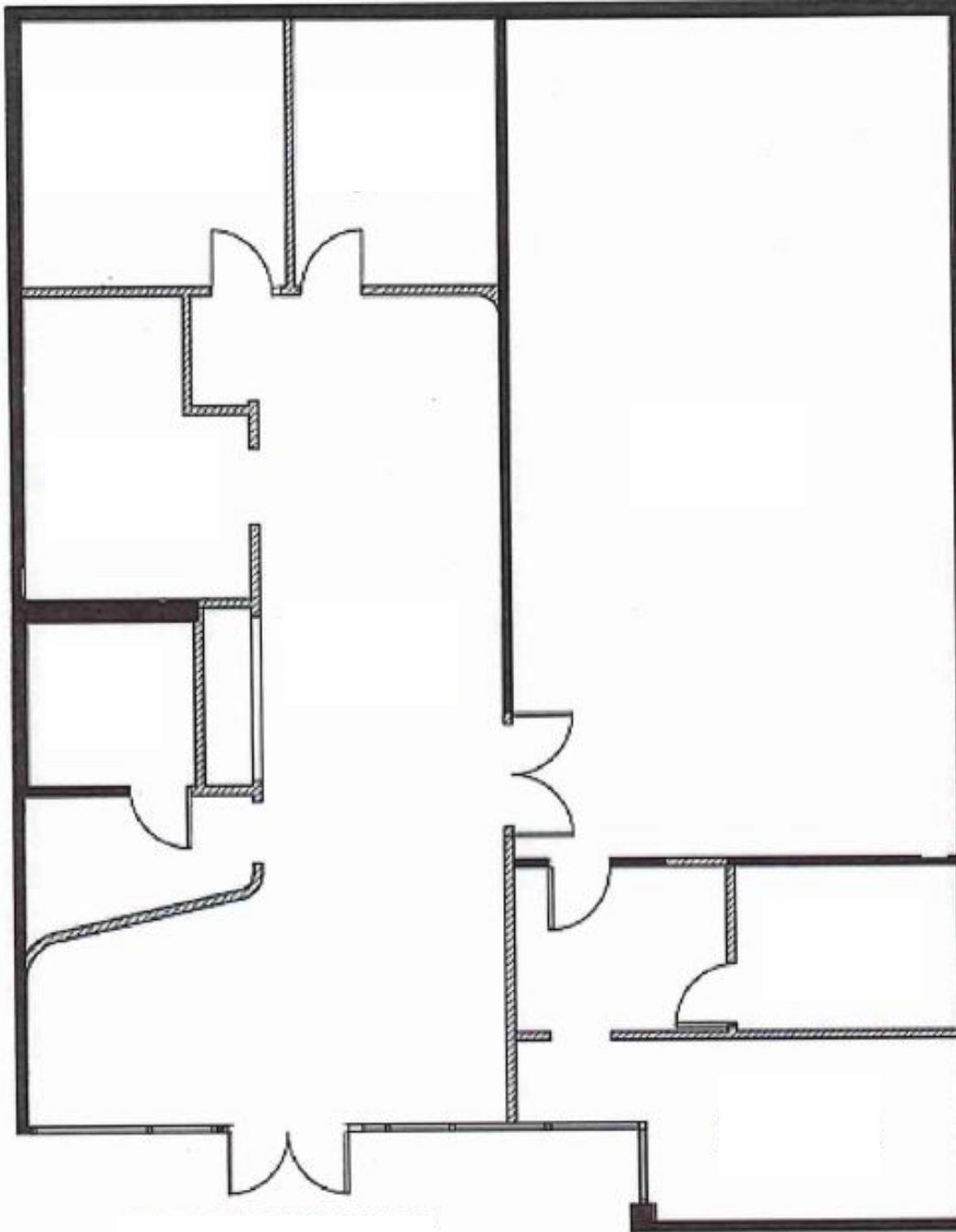
nmrk.com

NEWMARK

The information contained herein has been obtained from sources deemed reliable but has not been verified and no guarantee, warranty or representation, either express or implied, is made with respect to such information. Terms of sale or lease and availability are subject to change or withdrawal without notice.

FLOOR PLAN - SUITE F

±2,692 SF



NOT TO SCALE

For information, please contact:

Dave Bruzzone

Managing Director

t 925.858.2440

David.Bruzzone@nmrk.com

CA RE# 01103408

Nelson Roberts

Associate

t 925.210.8741

Nelson.Roberts@nmrk.com

CA RE# 02109703

nmrk.com

NEWMARK

The information contained herein has been obtained from sources deemed reliable but has not been verified and no guarantee, warranty or representation, either express or implied, is made with respect to such information. Terms of sale or lease and availability are subject to change or withdrawal without notice.



For information, please contact:

Dave Bruzzone

Managing Director

t 925.858.2440

David.Bruzzone@nmrk.com

CA RE# 01103408

Nelson Roberts

Associate

t 925.210.8741

Nelson.Roberts@nmrk.com

CA RE# 02109703

nmrk.com

NEWMARK

The information contained herein has been obtained from sources deemed reliable but has not been verified and no guarantee, warranty or representation, either express or implied, is made with respect to such information. Terms of sale or lease and availability are subject to change or withdrawal without notice.