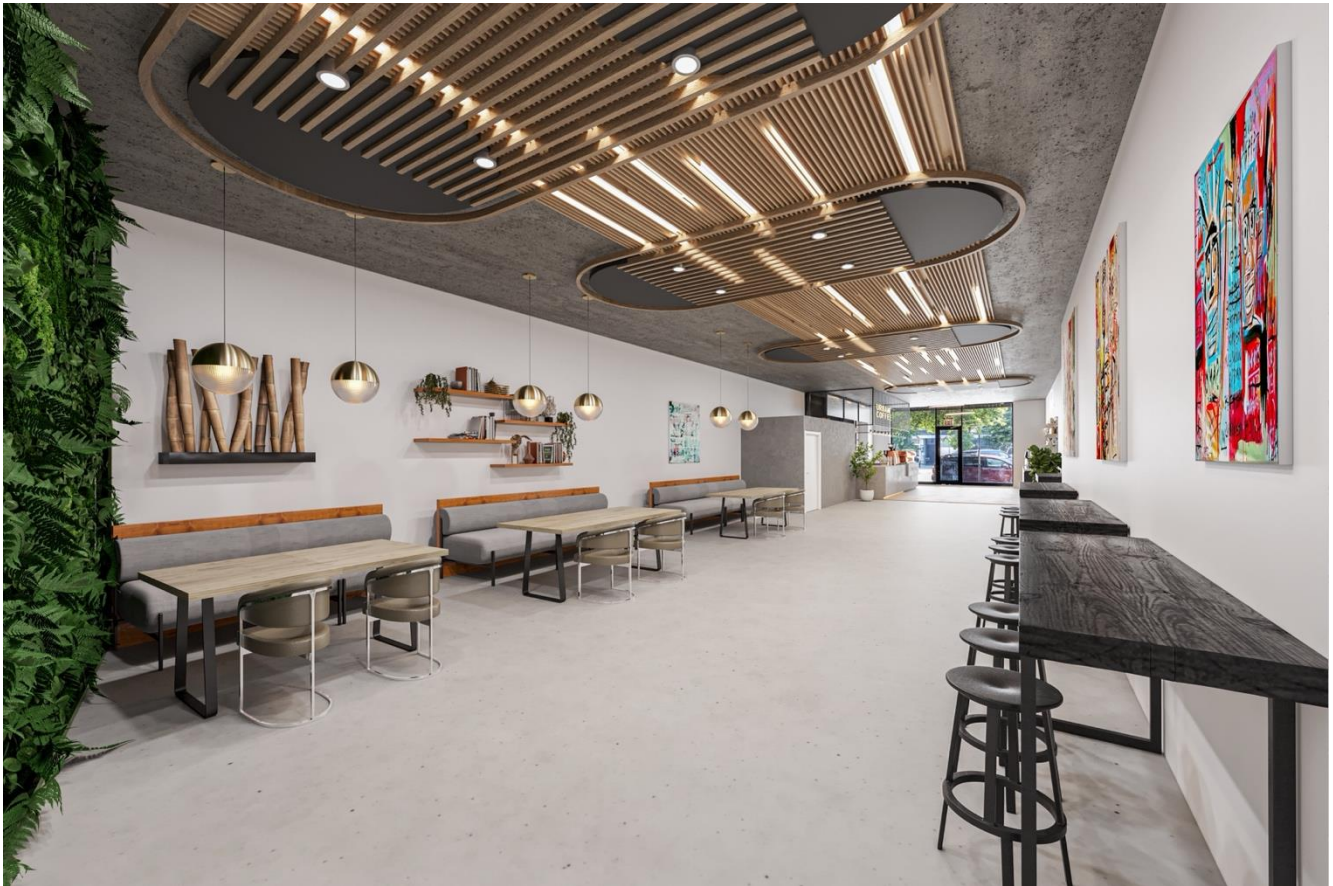


# 1055-59 Flushing Ave: 2023RSF-6321RSF Available Prime Retail/Office/Medical/Health & Wellness



## 1055-59 Flushing Ave, Ground Floor Retail

ASKING RENT: 1055 & 1057 - \$5,900 & \$6,900 | PPSF: ~\$35-\$37

2023-6,321RSF | Please inquiry for Combination Pricing

Current asking rent for 1055 & 1057 reflects a 5 year lease and 5 year Market Option

Experienced operators are welcome and preferred! 1055-1059 Flushing Ave - Incredible opportunity to combine up to 6,321RSF for a flagship location offering almost 70FT of commercial frontage including a curb cut in the most desirable retail corridor in East Williamsburg bordering prime Bushwick.

All uses are considered from retail, restaurant, bar, QSR, food & beverage, health & wellness, tech, studio/film production, logistics, creative, office, medical, community facility, etc.

This amazing location is just a few short blocks from the Morgan Ave/Jefferson St (L) & Central Ave (M) Subway stations. Prominent tenants nearby include Netflix, Rivian, Elsewhere, Brooklyn Made, Ichiran, Sea Wolf, Bunker, Honey, Fine & Raw Chocolate, Roberta's, House of Yes, just a name a few. Major retailers & national tenants are starting to settle in this trendy neighborhood.

Expertise You Can Trust.  
Real Estate With Results.

RESIDENTIAL | COMMERCIAL | NEW DEVELOPMENT ADVISORY  
NYC - WESTCHESTER - HAMPTONS - GREENWICH CT  
#1 TEAM IN WILLIAMSBURG SINCE 2014 WITH OVER \$1 BILLION SOLD

TFT@CORCORAN.COM | @THEFORRAYTEAM



# Photos – Virtual Staged



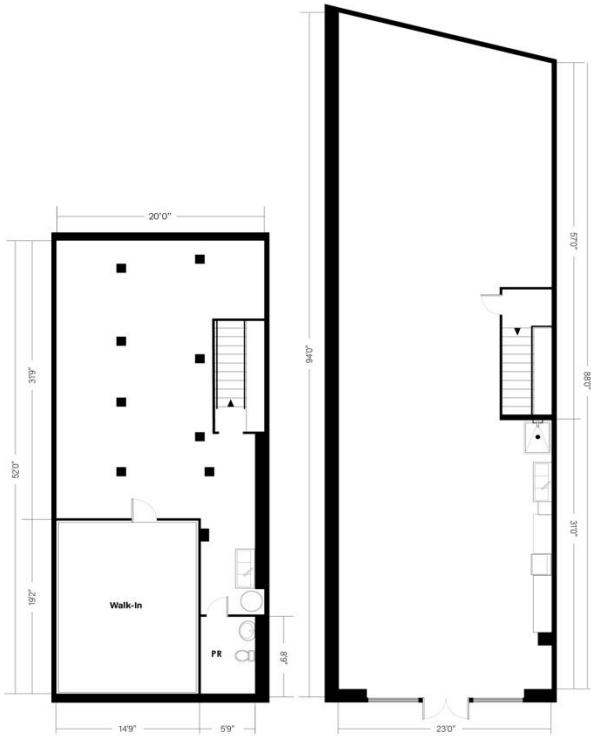
# Photos - Actual



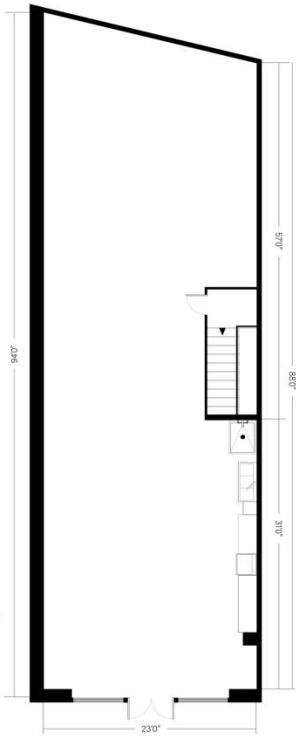
# Building Exterior & Floorplan

corcoran

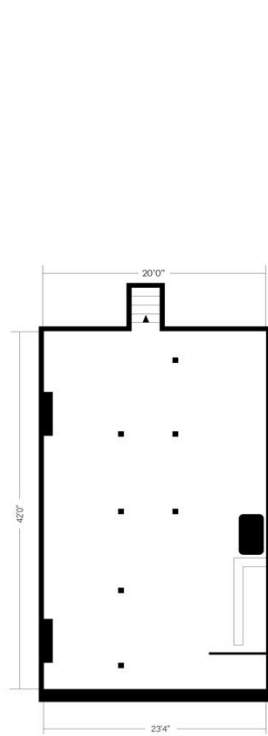
1055 | 1057 | 1059 Flushing Ave | Brooklyn



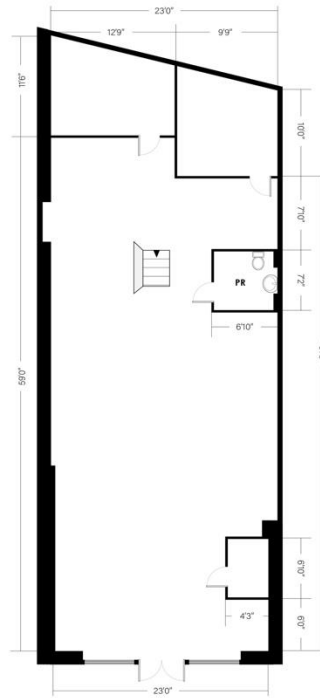
1055 Flushing - Basement  
Ceiling Height: 6'4"



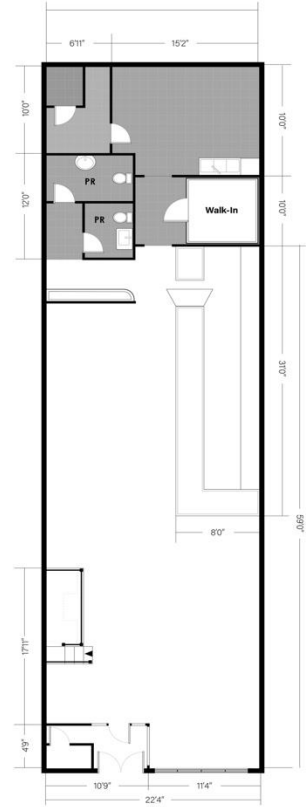
1055 Flushing - Street Level  
Ceiling Height: 12'0"



1057 Flushing - Basement  
Ceiling Height: 6'9"



1057 Flushing - Street Level  
Ceiling Height: 11'8"



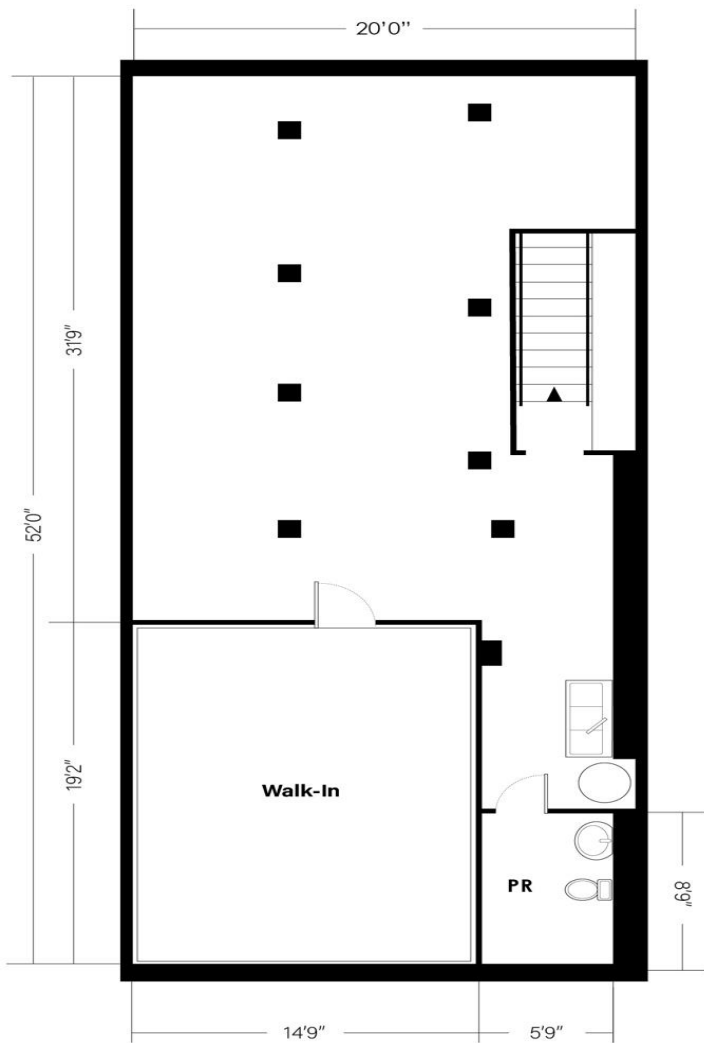
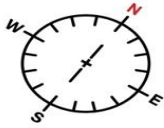
1059 Flushing - Street Level  
Ceiling Height: 13'0"



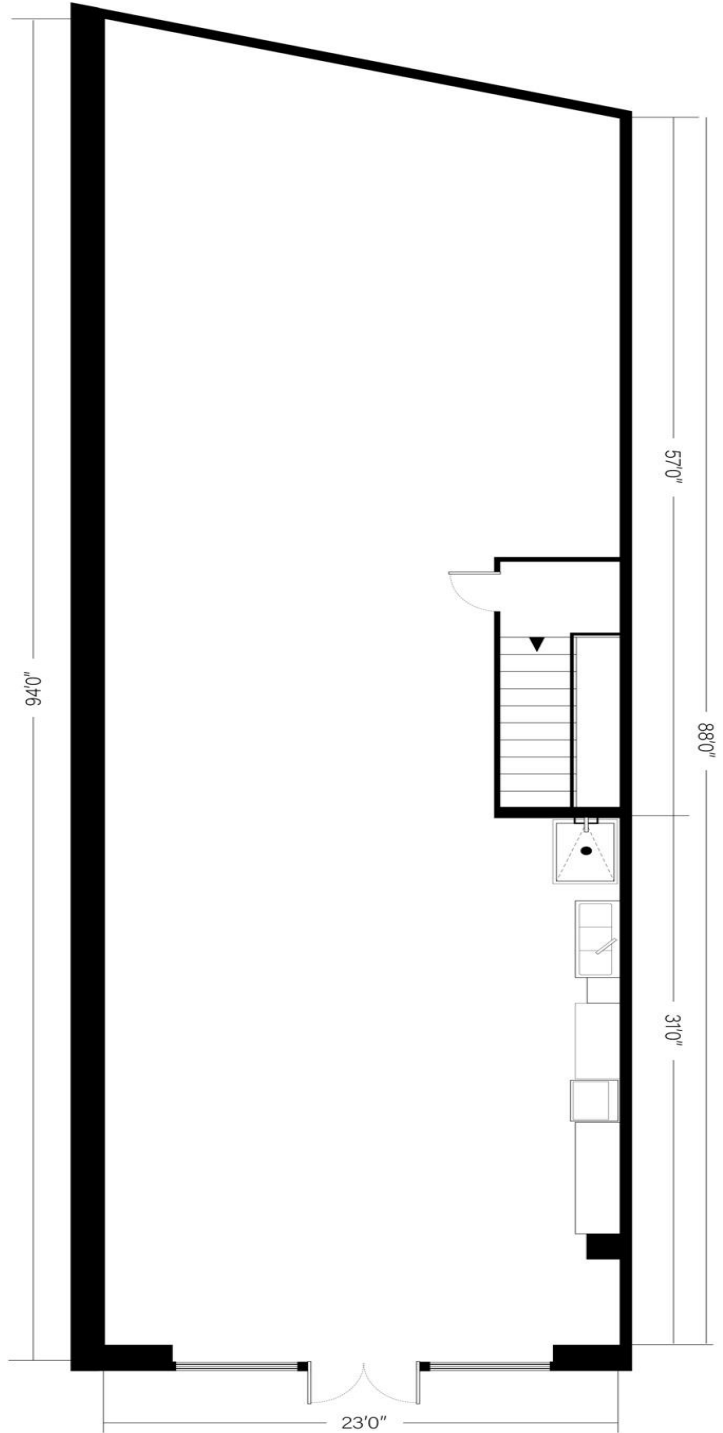
# 1055 Flushing Ave - Floorplan

*corcoran*

1055 Flushing Ave | Brooklyn



**1055 Flushing - Basement**  
Ceiling Height: 6'4"

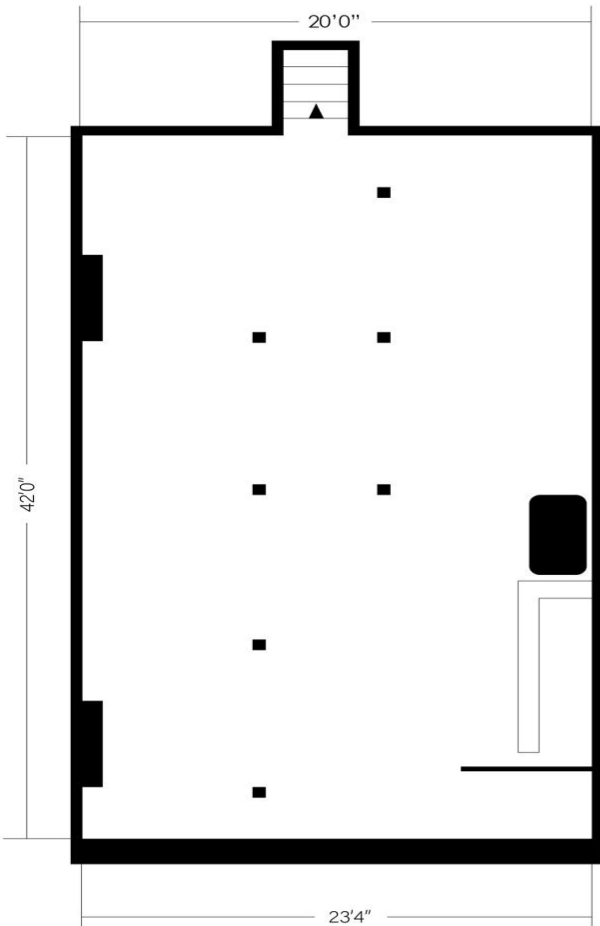
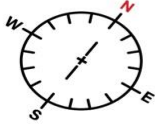


**1055 Flushing - Street Level**  
Ceiling Height: 12'0"

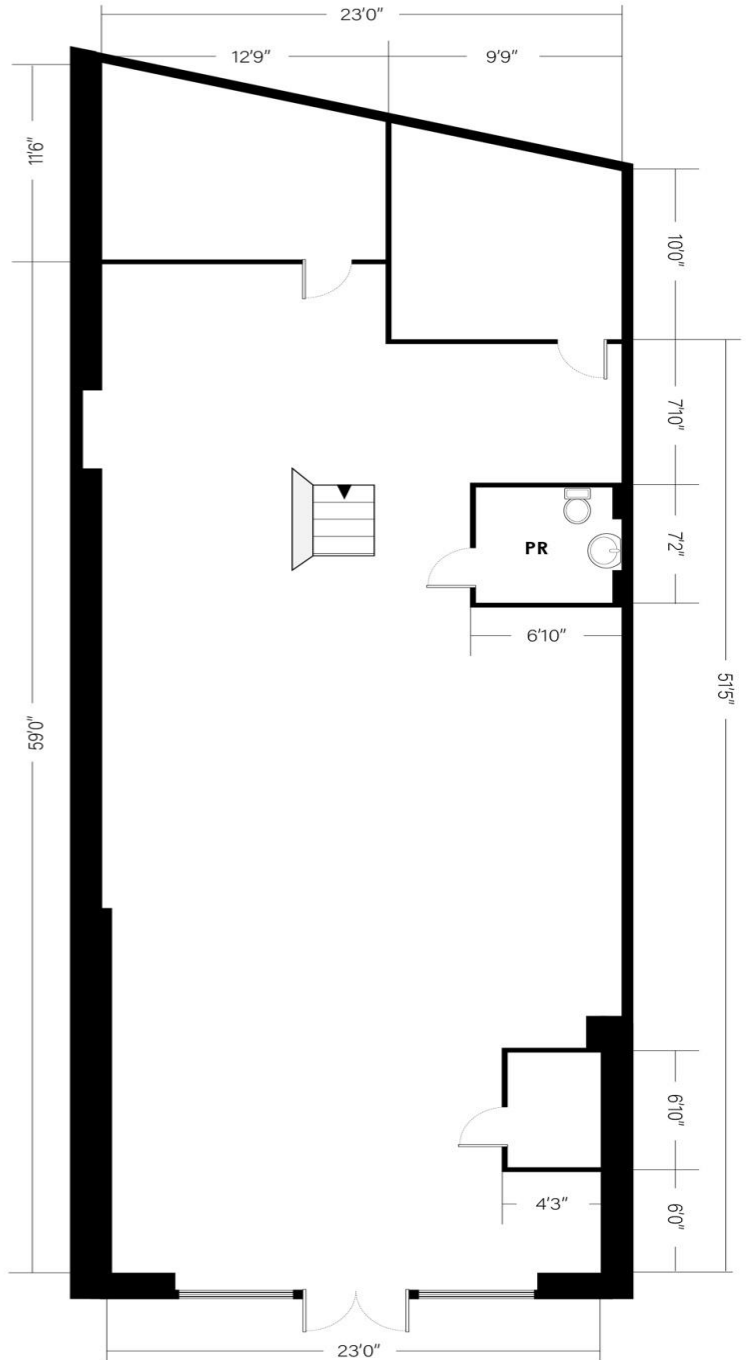
# 1057 Flushing Ave - Floorplan

*corcoran*

1057 Flushing Ave | Brooklyn



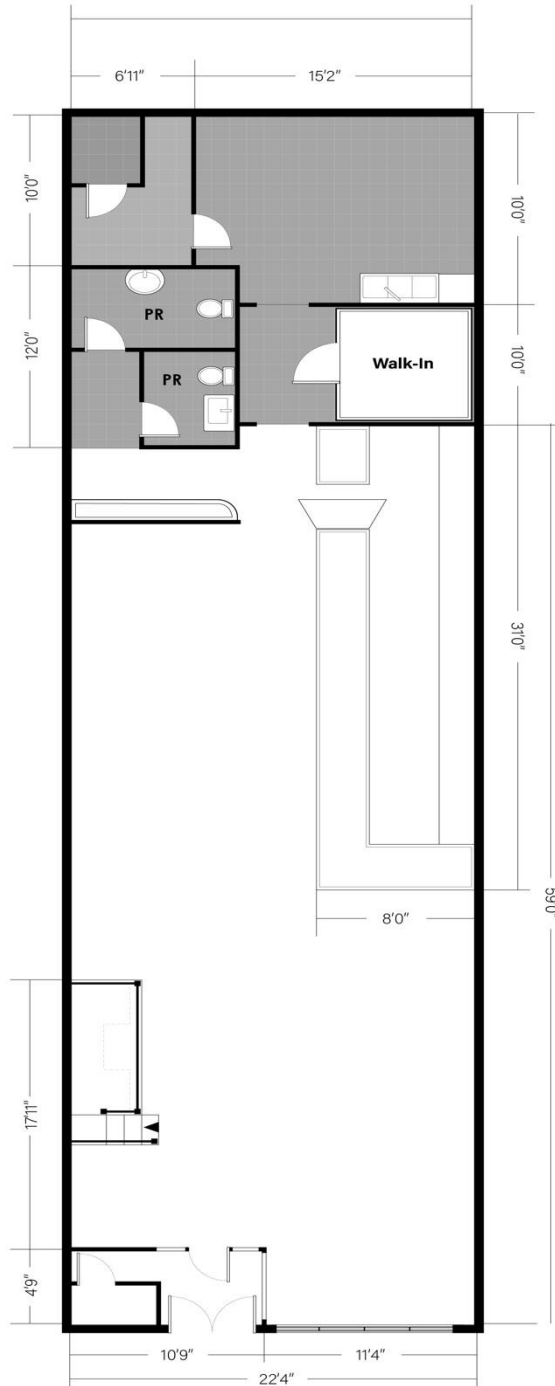
**1057 Flushing - Basement**  
Ceiling Height: 6'9"



**1057 Flushing - Street Level**  
Ceiling Height: 11'8"

# 1059 Flushing Ave - Floorplan

*corcoran*



**1059 Flushing - Street Level**  
Ceiling Height: 13'0"

Curb Cut-Out

**FLUSHING AVENUE**