

WAREHOUSE DISTRICT

CLEVELAND



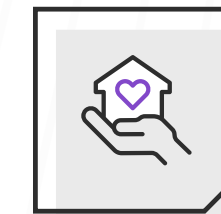
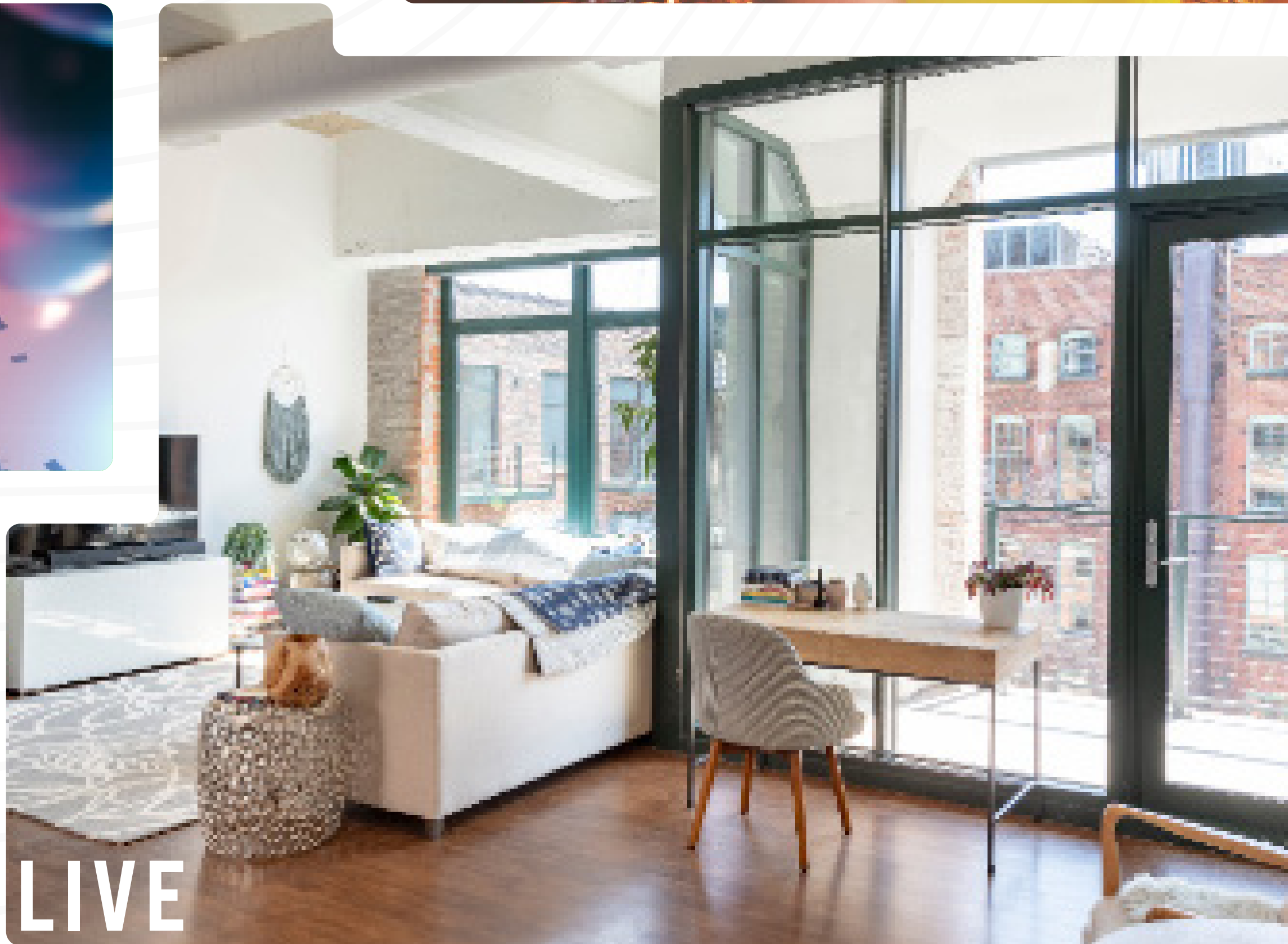
HISTORIC
CHARM,
MODERN
POSSIBILITIES

PREMIER OFFICE SPACE FOR LEASE

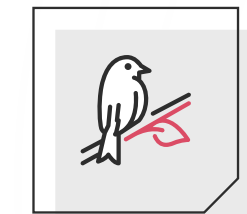


5-4 MANAGEMENT





Thousands of residents enjoy exciting living options—from loft apartments to penthouses to new condos—with spectacular views of the city and Lake Erie and easy access to everything



Thousands of residents enjoy exciting living options—from loft apartments to penthouses to new condos—with spectacular views of the city and Lake Erie and easy access to everything

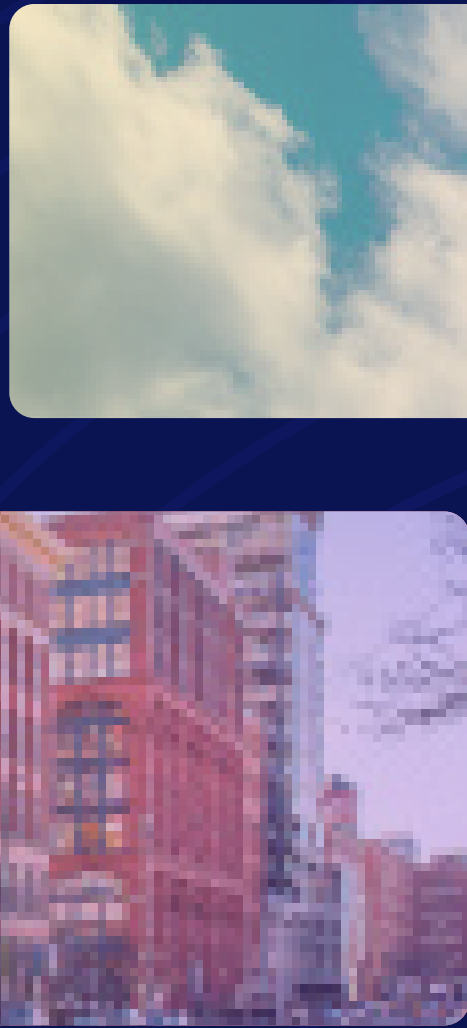


Dining options for all parts of life—quick workday lunches, weekend brunches, coffee shops for all-day-all-week fuel, and lively bars for a vibrant nightlife scene



Discover the Warehouse District's storied past with history and architectural excellence to explore at every corner

LAKESIDE PLACE



BRADLEY BUILDING



STONE BLOCK



WORTHINGTON BUILDING

RICH HISTORY BLENDED SEAMLESSLY WITH A TRULY MODERN FEEL


The Warehouse District has **ideal spaces for every business need**—service firms, large and small corporate offices, nonprofits, creative & tech companies, and everything in between. The beautiful **Italianate Victorian facades** reflect the neighborhood’s rich history without compromising modern business’ needs. **Modern finishes** and **unparalleled building and area amenities** make the Warehouse District the most compelling place to do business in the city.

323 W LAKESIDE AVE

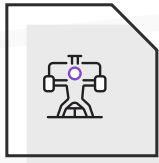
LAKESIDE PLACE

REMAINING AVAILABILITIES


- Suite 162 7,262 RSF
- Suite 410 11,000 RSF



West 3rd Deli



On-site fitness center



Buiding conference center



1220 W 6TH

BRADLEY BUILDING

REMAINING AVAILABILITIES

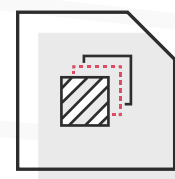
Suite 305 1,592 RSF

Suite 307 3,200 RSF*

Suite 308 2,415 RSF*

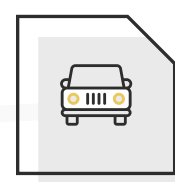
Suite 400 3,240 RSF

*Suites 307 & 308 can be combined for 5,616 RSF

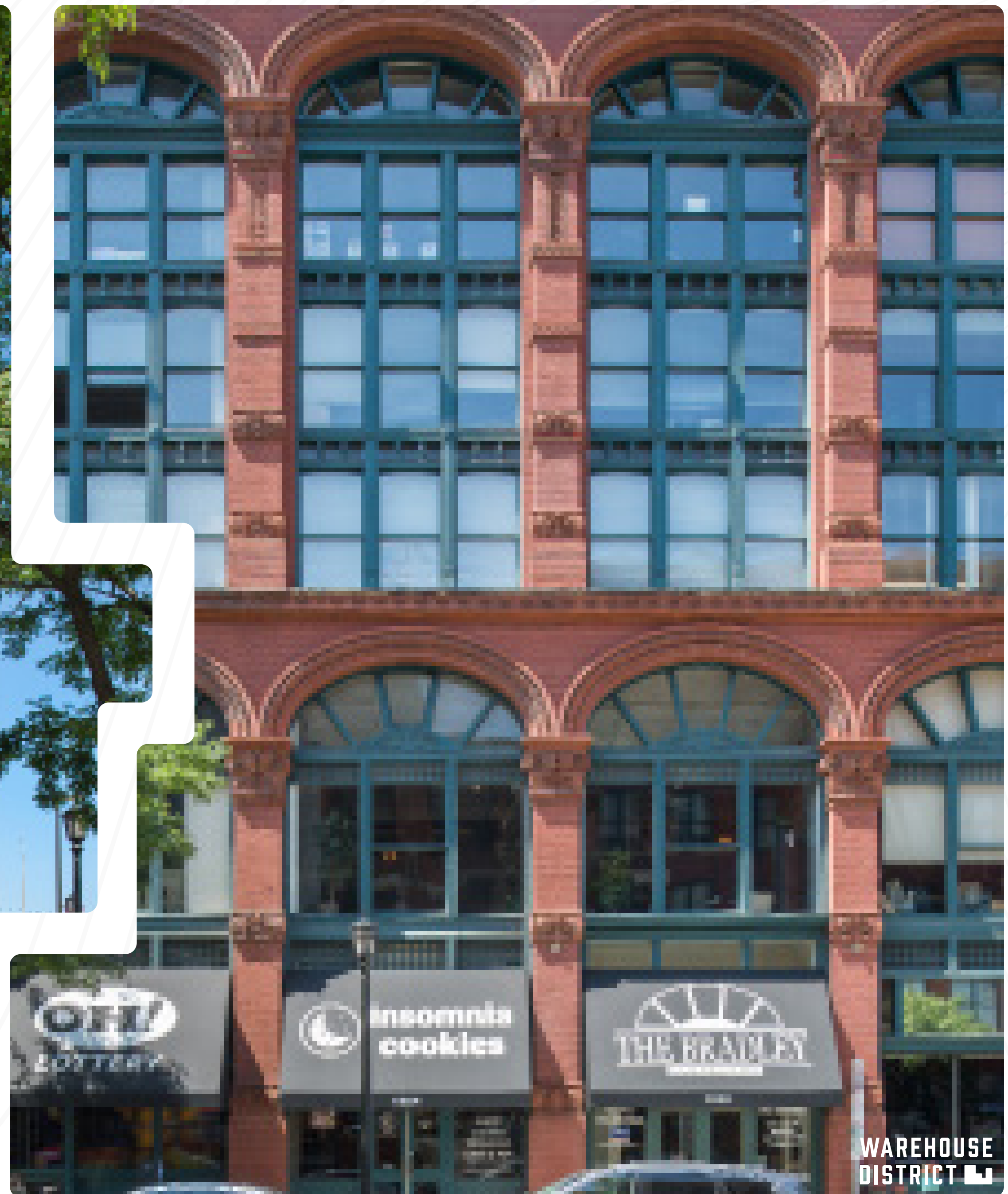
 1,592 - 5,616 sq ft available

 Modern finishes

 High ceilings

 Ample surface parking

 Insomnia Cookies



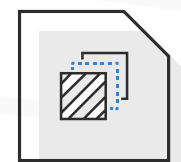
WAREHOUSE DISTRICT

800 W ST. CLAIR AVE
**WORTHINGTON
BUILDING**

AVAILABILITIES

3rd Floor 9,720 RSF

4th Floor 9,585 RSF



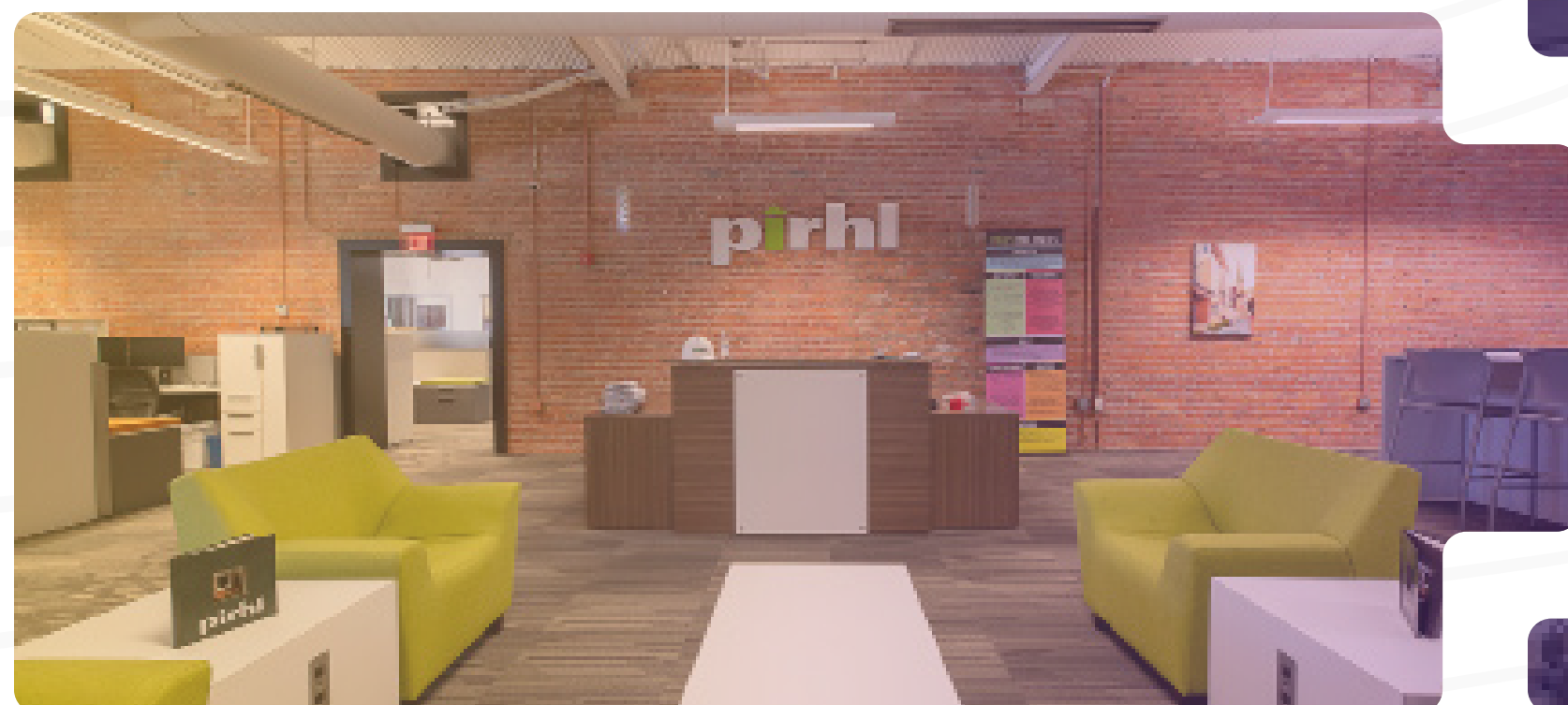
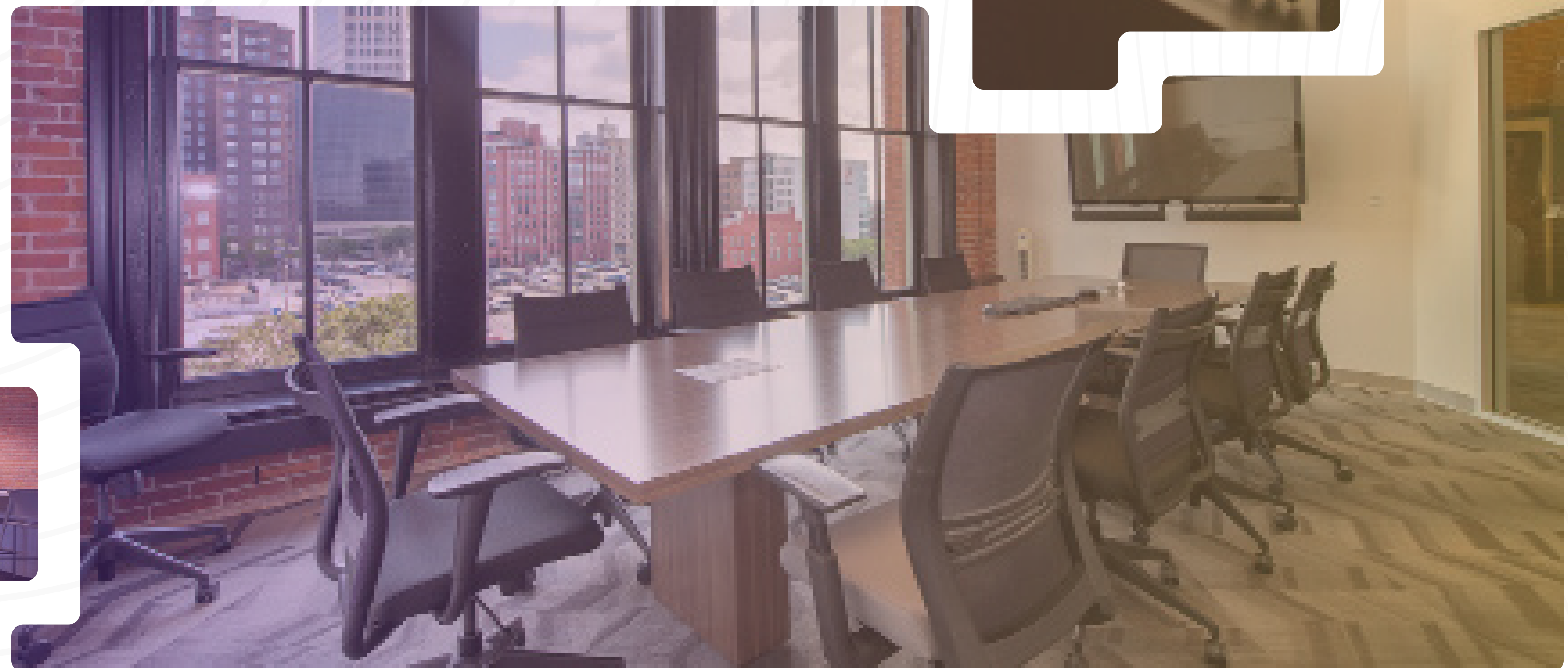
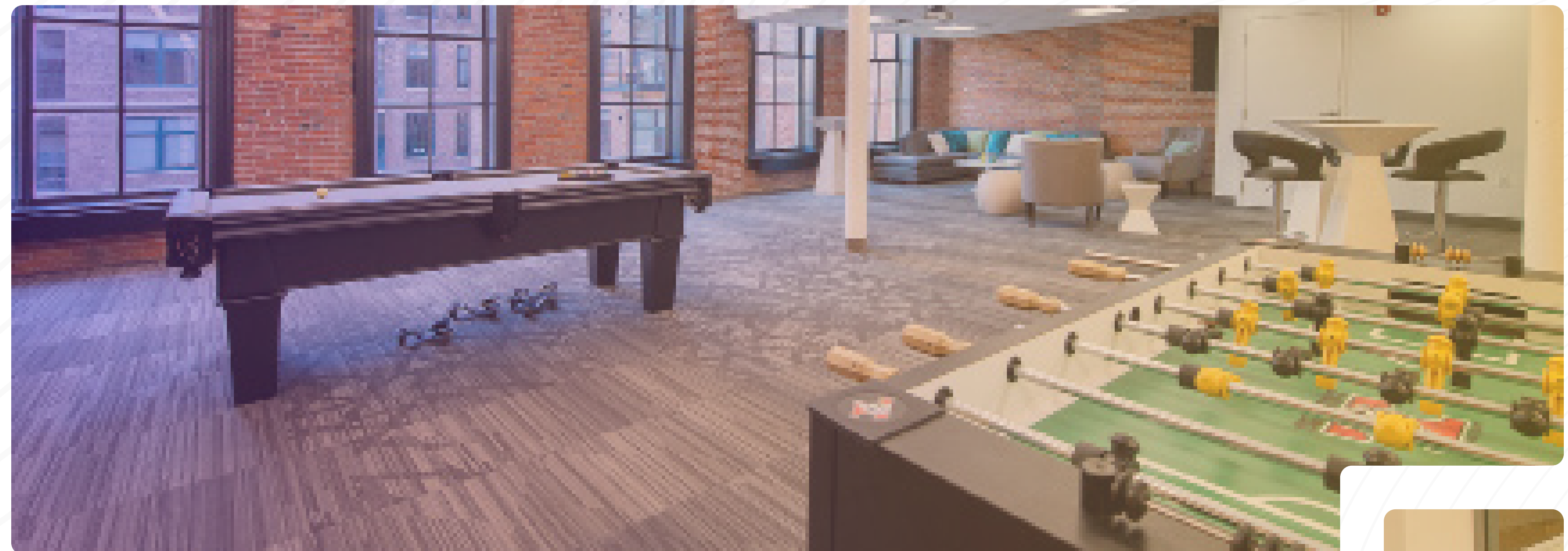
19,305 sq ft
total space available



Shared courtyard with
outdoor seating and grill



Cleveland Chop and Blue Point Grille
located on first floor



1. **Identify the subject and the verb.** The subject is "The committee" and the verb is "has agreed."



CONTACTS

**WARREN
BLAZY III**

+1 330 606 5917
warren.blazy@cbre.com

**ERIC
SMITH**

+1 330 714 6558
eric.smith3@cbre.com

WAREHOUSE DISTRICT

CLEVELAND



5-4 MANAGEMENT



SIXTY NORTH

©2024 CBRE, Inc. All rights reserved. This information has been obtained from sources believed reliable, but has not been verified for accuracy or completeness. You should conduct a careful, independent investigation of the property and verify all information. Any reliance on this information is solely at your own risk. CBRE and the CBRE logo are service marks of CBRE, Inc. All other marks displayed on this document are the property of their respective owners, and the use of such logos does not imply any affiliation with or endorsement of CBRE. Photos herein are the property of their respective owners. Use of these images without the express written consent of the owner is prohibited. PMStudio_JUNE2024