

NEWMARK

AVAILABLE FOR SALE OR LEASE
629 MAIN STREET | WESTBURY, NY



BUILDING SIZE:

9,670 SF

PLOT SIZE:

.23 Acres

FURTHER REDUCED SALE PRICE:

\$2,400,000.00 / \$248.19 PSF

Now....\$2,100,000.00 / \$217.17 PSF

REAL ESTATE TAXES:

\$39,121.00 / \$4.01 PSF

LEASE PRICE:

\$16.50 PSF Gross

OCCUPANCY:

Immediate

BUILDING SPECIFICATIONS:

- Zoned Industrial
- 3,500 sf of office space (2nd floor)
- Fully air-conditioned
- 11' ceiling height
- 1 drive-in door
- Gas heat
- 400 amps of power
- Sewers
- Ample parking

For more information, please contact exclusive brokers:

Daniel Gazzola

Managing Director

t 631-673-0829

daniel.gazzola@nmrk.com

Chuck Tabone, SIOR

Executive VP-Managing Director

t 631-673-0803

charles.tabone@nmrk.com

nmrk.com

290 Broadhollow Road, Suite 103E, Melville, NY 11747

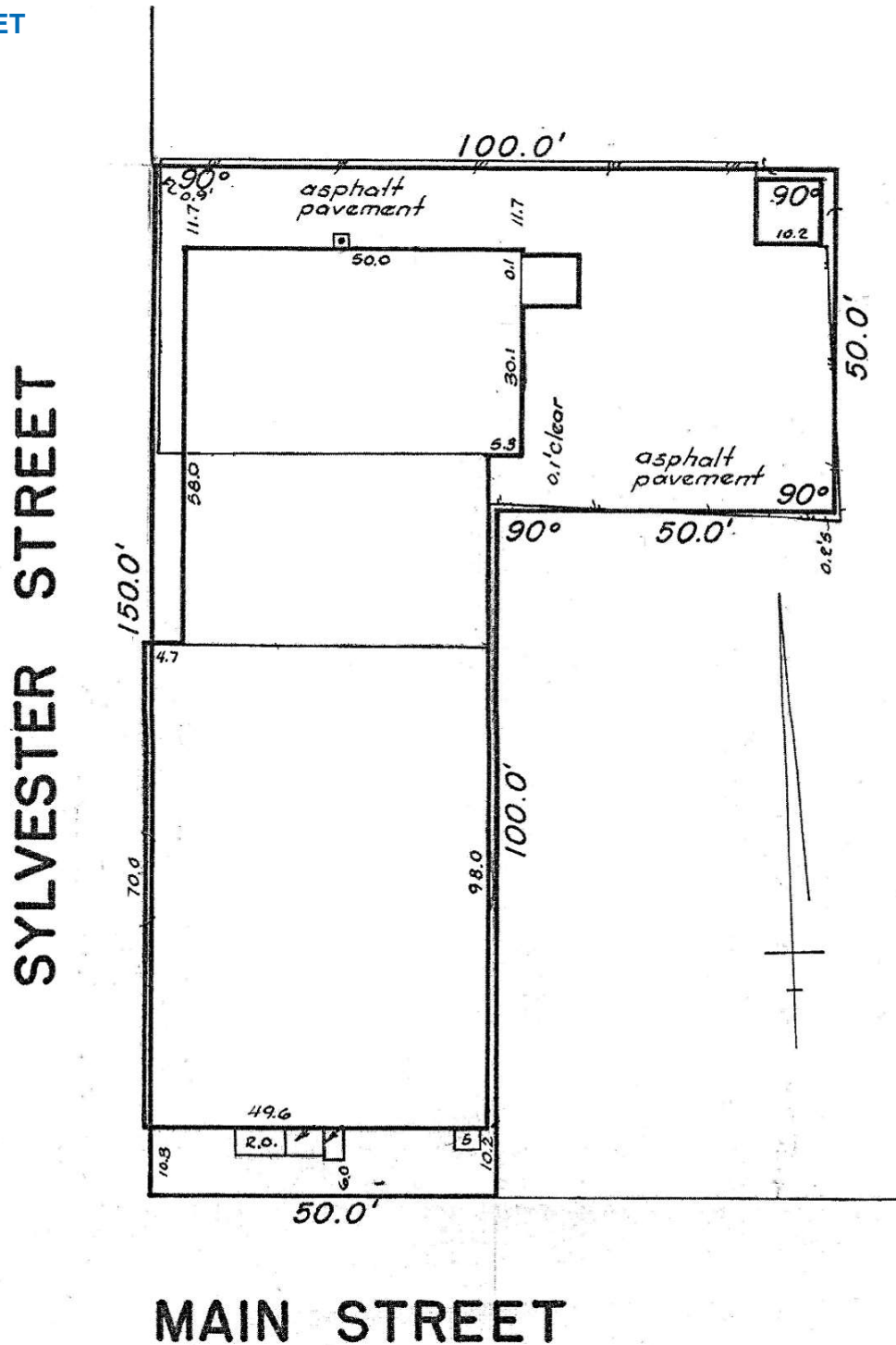


All information contained in this publication is derived from sources that are deemed to be reliable. However, Newmark has not verified any such information, and the same constitutes the statements and representations only of the source thereof, and not of Newmark. Any recipient of this publication should independently verify such information and all other information that may be material to any decision that recipient may make in response to this publication, and should consult with professionals of the recipient's choice with regard to all aspects of that decision, including its legal, financial, and tax aspects and implications. Any recipient of this publication may not, without the prior written approval of Newmark, distribute, disseminate, publish, transmit, copy, broadcast, upload, download, or in any other way reproduce this publication or any of the information it contains. This document is intended for informational purposes only and none of the content is intended to advise or otherwise recommend a specific strategy. It is not to be relied upon in any way to predict market movement, investment in securities, transactions, investment strategies or any other matter.
©2020 Newmark. All Rights Reserved.

NEWMARK

629 MAIN STREET
WESTBURY, NY

SURVEY



EXCLUSIVE BROKERS:

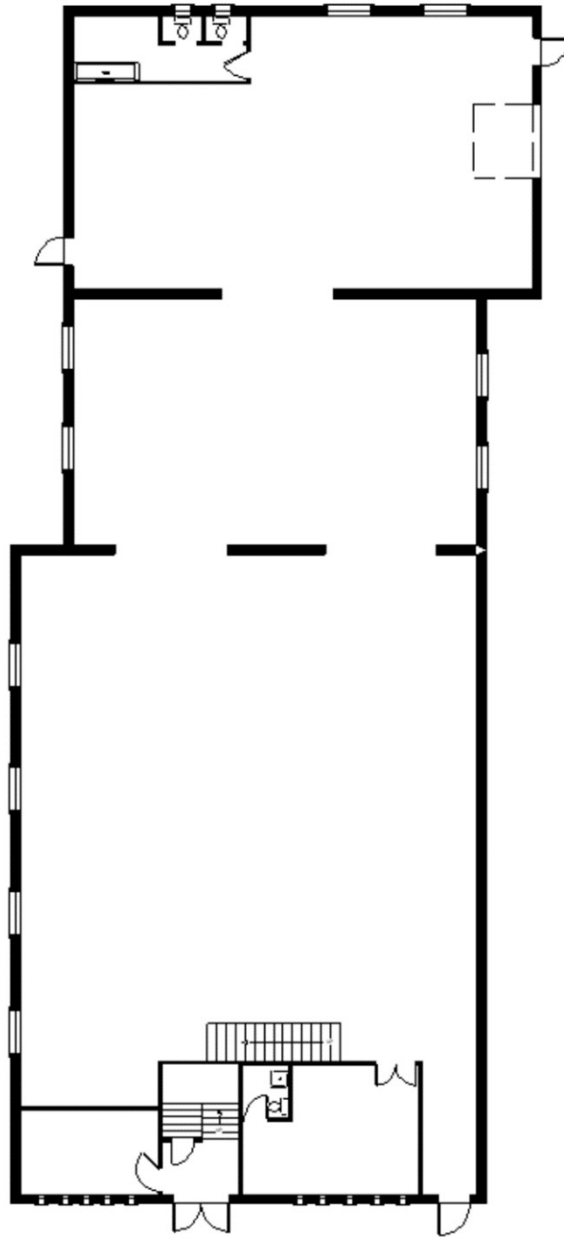
Daniel Gazzola
Managing Director
t 631-673-0829
daniel.gazzola@nmrk.com

Chuck Tabone, SIOR
Executive VP-Managing Director
t 631-673-0803
charles.tabone@nmrk.com

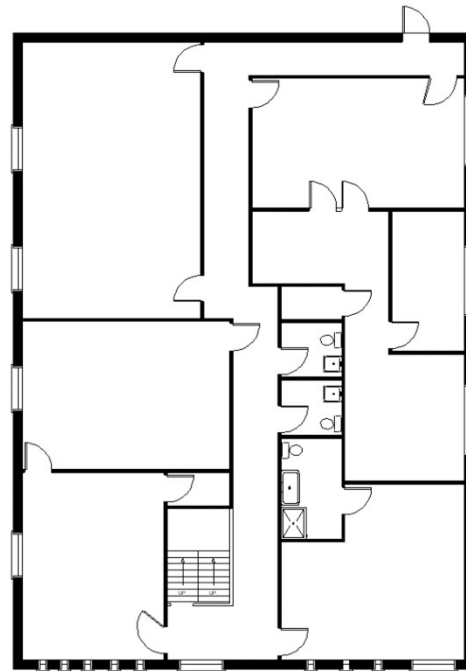
NEWMARK

629 MAIN STREET
WESTBURY, NY

FLOOR PLAN



FIRST FLOOR



SECOND FLOOR

EXCLUSIVE BROKERS:

Daniel Gazzola
Managing Director
t 631-673-0829
daniel.gazzola@nmrk.com

Chuck Tabone, SIOR
Executive VP-Managing Director
t 631-673-0803
charles.tabone@nmrk.com