

**OFFICE / LAB SPACE AVAILABLE**

# 1432 MAIN STREET

Waltham, Massachusetts



TERM THROUGH AUGUST 31, 2028

**8,897 SF Available**

# 1432 MAIN STREET

Waltham, Massachusetts

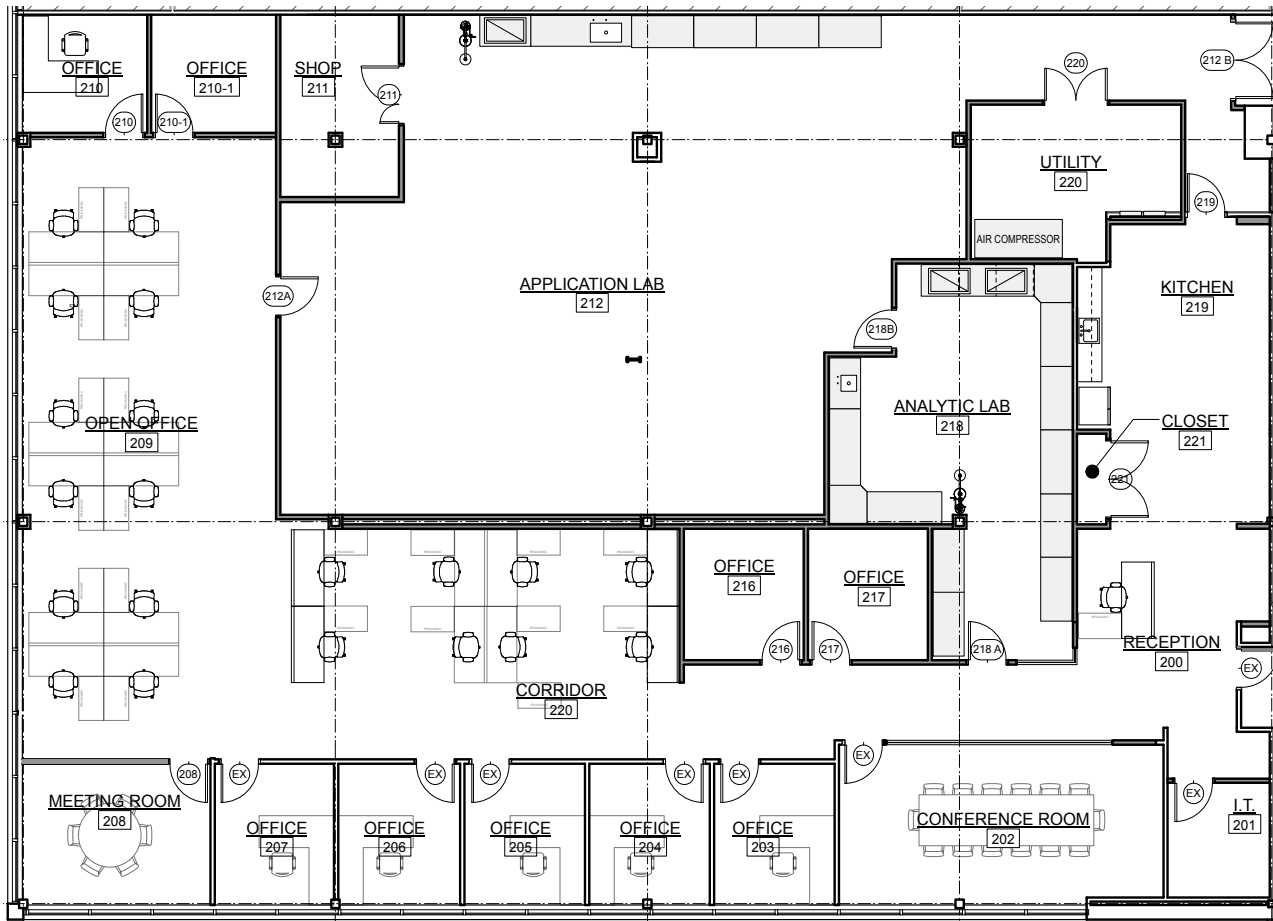
## PROPERTY SPECIFICATIONS

- AVAILABLE SF:** 8,897 SF
- OCCUPANCY:** Vacant
- TERM:** Through August 31, 2028
- PARKING:** 3.30/1,000 SF
- LOADING:** Two (2) shared tailboard docks with freight elevator access
- FURNITURE:** Can be made available
- AMENITIES:** Shared conference center, gym, and grab & go café within park
- PH NEUTRALIZATION SYSTEM:** Shared



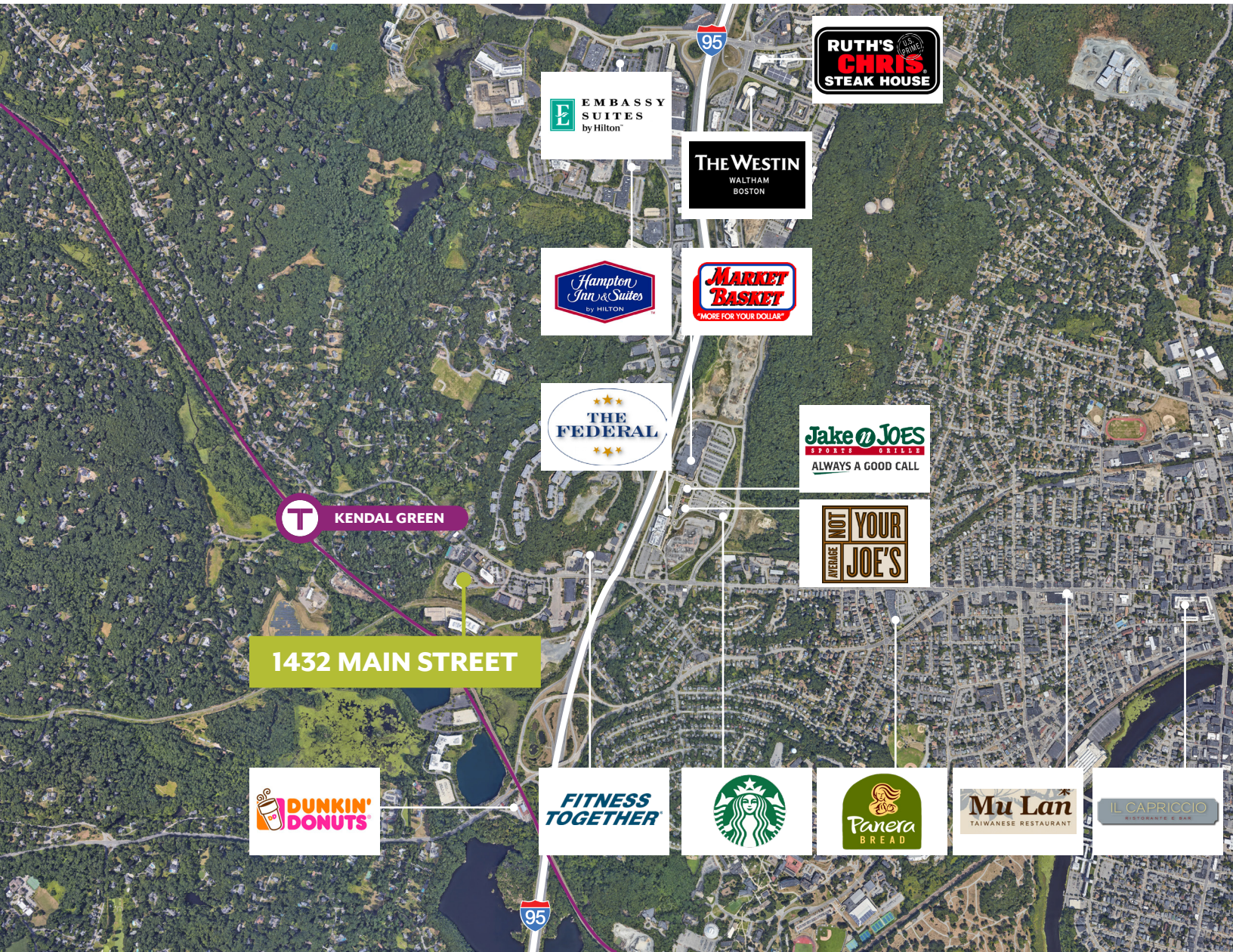
# FLOOR PLANS

## FLOOR 2



# 1432 MAIN STREET

Waltham, Massachusetts



## CONTACT US TO ARRANGE A TOUR

**PATRICK GRADY**

781.820.9881

pgrady@hunnemanre.com

**STEVE JAMES**

617.775.9720

sjames@hunnemanre.com

**JIM BOUDROT**

617.957.1407

jboudrot@hunnemanre.com

**HENRY BIRMINGHAM**

508.903.7627

hbirmingham@hunnemanre.com



303 Congress Street, Boston, MA 02210 617.457.3400 [www.hunnemanre.com](http://www.hunnemanre.com)