

OFFERING MEMORANDUM

Ideal Investment + End User Opportunity | 75 Oak Street Patchogue, NY 11772

FOR SALE



Commercial



EXECUTIVE SUMMARY

Professional Office Building For Sale | 75 Oak Street Patchogue, NY 11772

Building Size:	+/-24,000 SF	Lot Size:	1.52 Acres
Available SF:	+/-7,000 SF	Parking:	88 Spaces
Number of Units:	2	Zoning:	Commercial
Annual Taxes:	+/--\$125,000.00	Sale Price:	\$5,500,000.00

For more information or for financial information please contact Michael Murphy.

Property Overview

A rare chance to acquire a +/-24,000 SF freestanding office building prominently positioned on a signalized corner in the center of Patchogue Village. This high-visibility location offers exceptional accessibility, strong foot and vehicle traffic, and immediate proximity to the village's vibrant retail, dining, and transportation amenities.

The property is 70% occupied by the Social Security Administration (SSA) under a long-term lease running through 2040, providing stable, predictable income backed by a federal government tenant. Situated on 1.52 acres, the site offers ample on-site parking for 88 vehicles. The building's corner placement at a traffic light ensures maximum exposure and ease of access for employees and visitors.

This is a solid, long-term investment opportunity with tenant improvements just completed, in one of Suffolk County's most dynamic and rapidly growing downtowns—ideal for investors seeking secure tenancy, strong cash flow, and a prime village-center location, with approximately +/- 7,000 SF available for an end user to occupy or for an investor to lease for additional income.

Financial information on request for qualified buyers.

Exclusively represented by:

Michael G. Murphy

President | Commercial Division

631.858.2460 Email: michael.murphy@elliman.com

COMPLETE HIGHLIGHTS

Professional Office Building For Sale | 75 Oak Street Patchogue, NY 11772



Property Highlights

- Prime Village-Center Corner Location with exceptional visibility, signalized access, and immediate proximity to Patchogue's retail, dining, and transit amenities.
- Stable Federal Tenancy with the SSA occupying 70% of the building under a long-term lease through 2040.
- Ample On-Site Parking on 1.52 acres, offering 88 parking spaces total.
- End-User Opportunity to occupy and customize approximately 7,000 SF of available space while benefiting from strong in-place income.

Exclusively represented by:

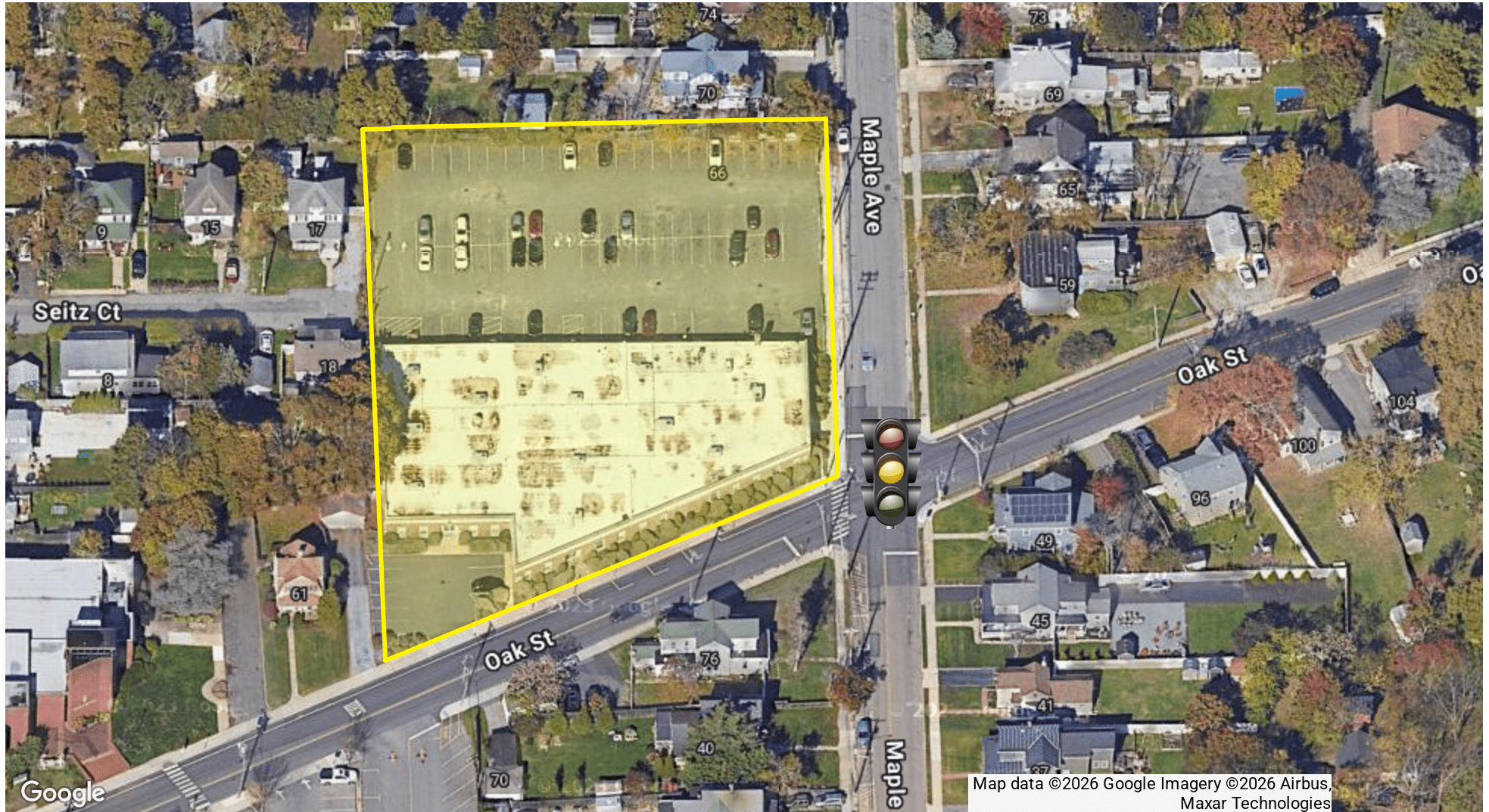
Michael G. Murphy

President | Commercial Division

631.858.2460 Email: michael.murphy@elliman.com

AERIAL VIEW OF PROPERTY

Professional Office Building For Sale | 75 Oak Street Patchogue, NY 11772



Exclusively represented by:

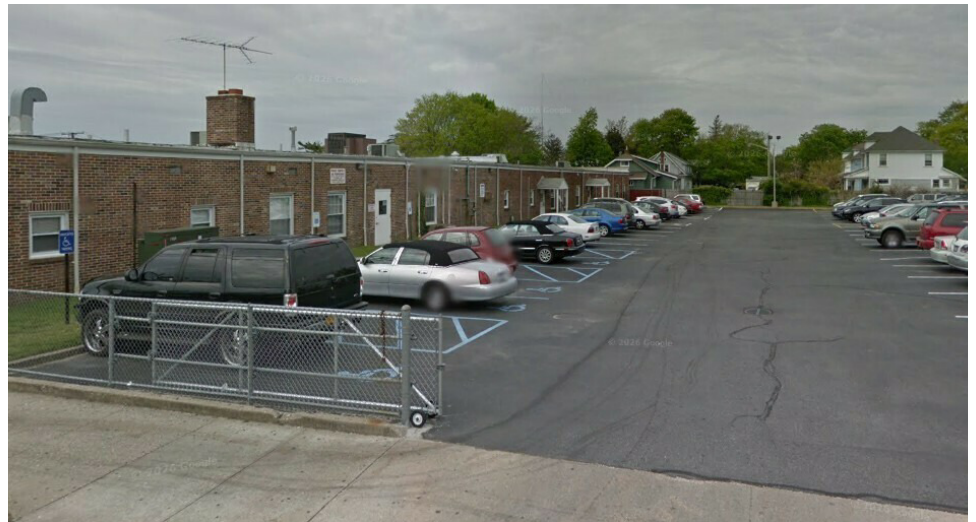
Michael G. Murphy

President | Commercial Division

631.858.2460 Email: michael.murphy@elliman.com

ADDITIONAL PHOTOS

Professional Office Building For Sale | 75 Oak Street Patchogue, NY 11772



Exclusively represented by:

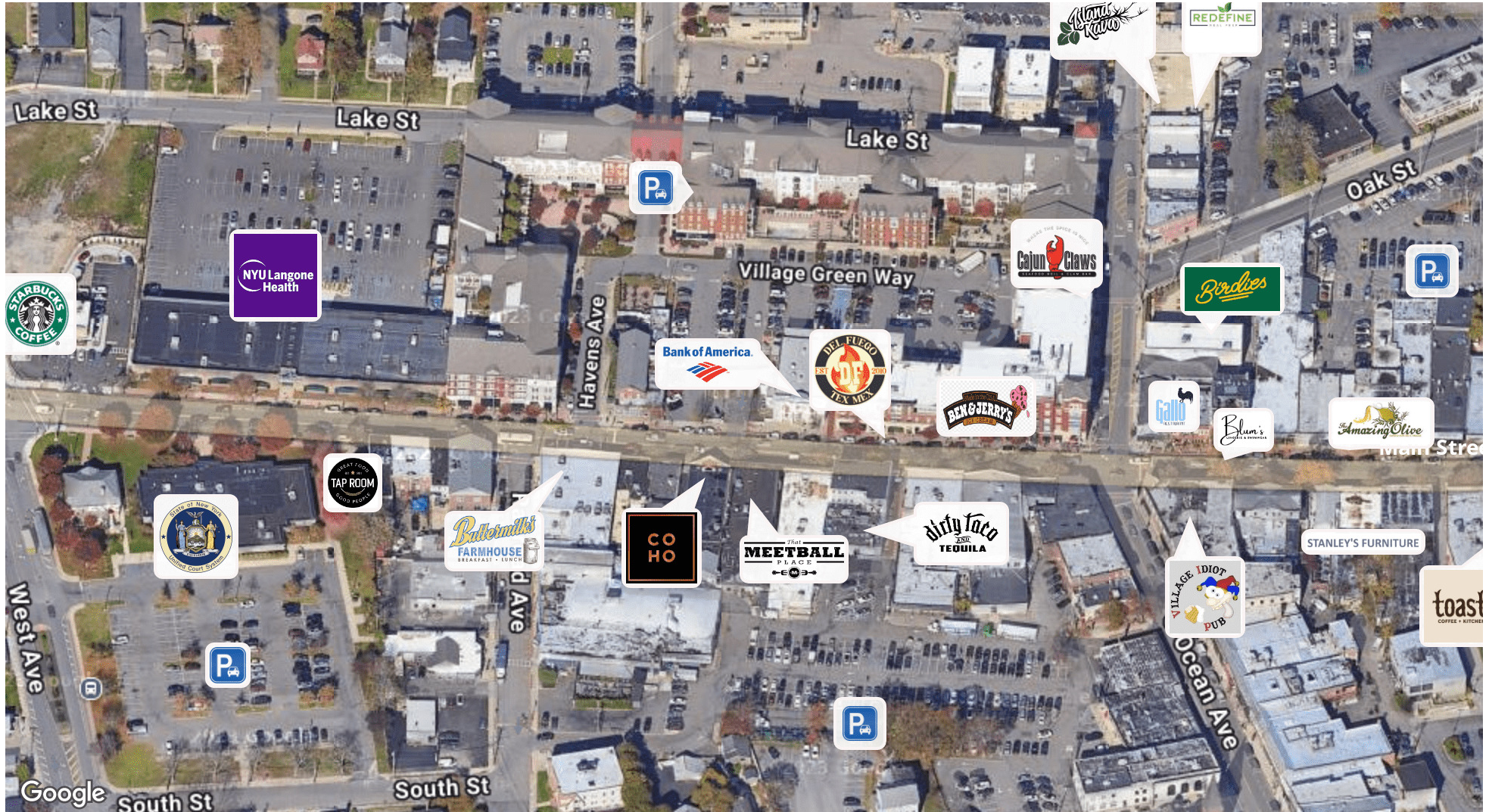
Michael G. Murphy

President | Commercial Division

631.858.2460 Email: michael.murphy@elliman.com

PATCHOGUE MAP-OMSTYLE

Professional Office Building For Sale | 75 Oak Street Patchogue, NY 11772



Exclusively represented by:

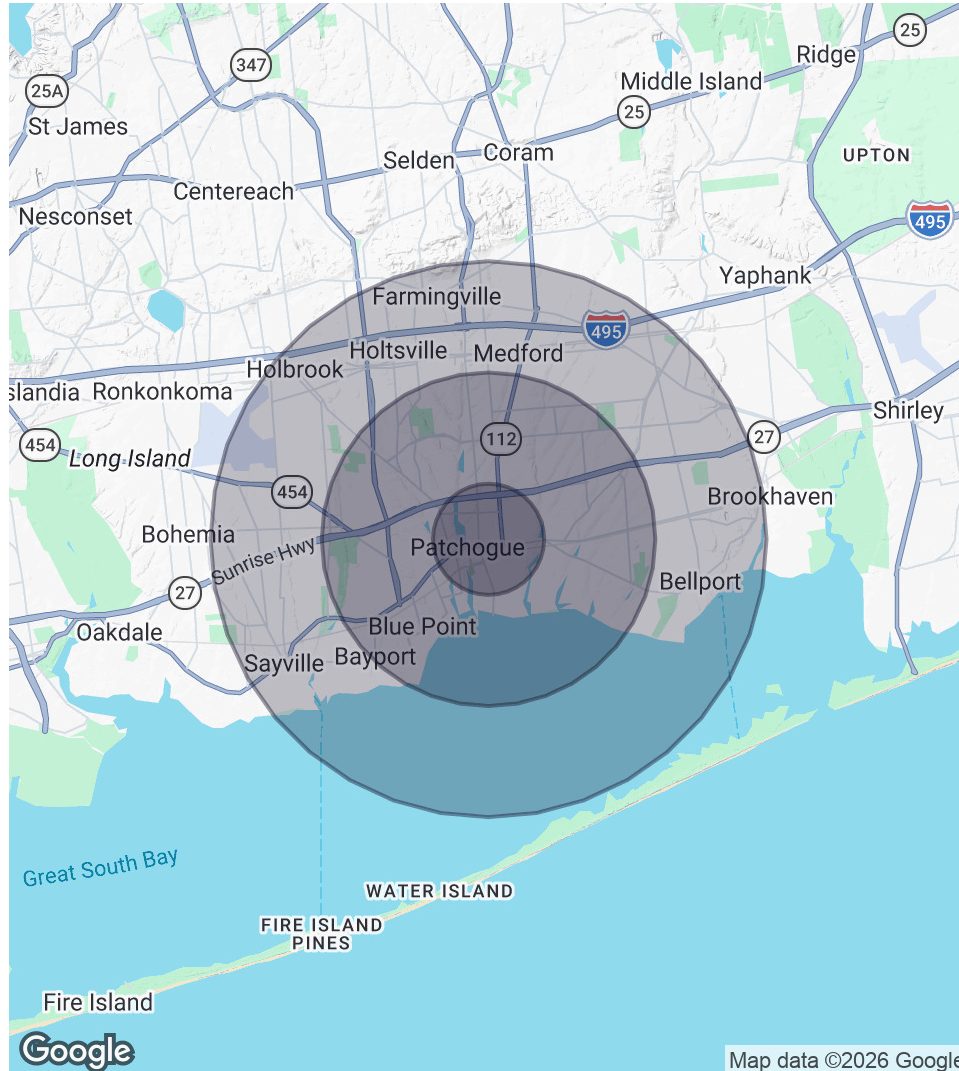
Michael G. Murphy

President | Commercial Division

631.858.2460 Email: michael.murphy@elliman.com

DEMOGRAPHICS MAP & REPORT

Professional Office Building For Sale | 75 Oak Street Patchogue, NY 11772



1 Mile Radius

Population
14,027
Households
5,593
Average HH Income
\$132,231

3 Miles Radius

Population
67,970
Households
26,050
Average HH Income
\$147,226

5 Miles Radius

Population
158,206
Households
57,053
Average HH Income
\$153,728

Exclusively represented by:

Michael G. Murphy

President | Commercial Division

631.858.2460 Email: michael.murphy@elliman.com

Professional Office Building For Sale | 75 Oak Street Patchogue, NY 11772

EXCLUSIVELY REPRESENTED BY:



Michael G. Murphy

President | Commercial Division

631.858.2460

Email: michael.murphy@elliman.com



 **Douglas Elliman**
Commercial

550 Smithtown Bypass Suite 117

Smithtown, NY 11787

631.858.2405

ellimancommercial.com



We Are Commercial Real Estate

550 Smithtown Bypass Suite 117
Smithtown, NY 11787
631.858.2405
ellimancommercial.com

Commercial real estate involves more than just property listings. To get the most effective results, you need to partner with a company that has a full complement of services and an in-depth team of professionals to help with all your needs. Douglas Elliman's team of commercial real estate experts is committed to unrivaled performance standards when working with tenants, investors, purchasers and owners. We represent all major property types including office, industrial, retail, apartment and land. We treat each assignment with commitment and focus, from a single transaction in a local market to national and multi-market assignments. We help negotiate contracts, coordinate construction and provide both property management as well as ongoing advisory service to satisfy your changing real estate needs. Our breadth of market knowledge, unprecedented network and use of innovative technology extend to all types of property transactions. For information on our services please contact us today.