

EYDE DEVELOPMENT

8155 EXECUTIVE COURT
LANSING, MI 48917



FOR LEASE

BUILDING SQUARE FOOTAGE:

- 13,547 SF Building
- Multiple suites available

ADVANTAGES:

- On site parking available

FEATURES/AMENITIES:

- Adjacent to Wal-Mart, Lowe's, Menards and Furniture Row

STRATEGIC LOCATION:

- Strategically located on Executive Court near Marketplace Boulevard and Saginaw Highway
- High traffic count on Saginaw Highway
- Easy access to highway
- Close proximity to restaurants, grocery, retail, gyms and hotels

CONTACT

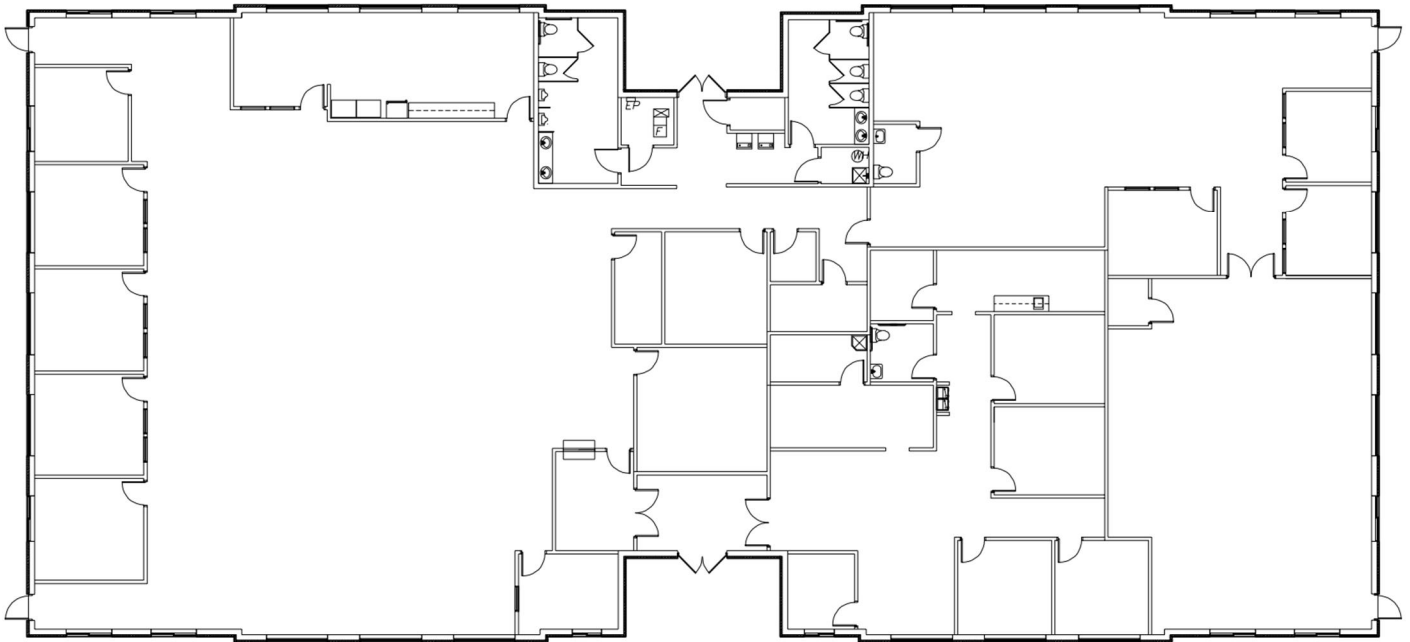
Eyde Development
517-903-3933 | eyde.com



EYDE DEVELOPMENT

8155 EXECUTIVE COURT
LANSING, MI 48917

BUILDING PLAN



CONTACT

Eyde Development

517-903-3933 | eyde.com

| Eyde Development | 300 S. Washington Square #400 Lansing, MI 48933 |
| Phone: 517-903-3933 | Fax: 517-484-5695 | www.eyde.com |