

Pads Available

SEC Camelback Rd & 91st Ave | Phoenix, AZ 85037



FOR SALE, GROUND LEASE, BTS

5 Pads

AVAILABLE

Pad 1 - ± .74 AC

Pad 2 - ± 1 AC

Pad 3 - ± 1.84 AC

Pad 4 - ± .73AC

Pad 5 - ± .6 AC

CONTACT

ED BEEH

602.682.6040

ed.beeh@srsre.com

CHRIS ABDAYEM, CCIM

602.682.6052

chris.abdayem@srsre.com

ABOUT THE PROPERTY

- Commercial pads available for sale, ground lease, BTS
- Located 1 mile from Loop 101 and State Farm Stadium, Home of the AZ Cardinals
- Across from Copper Canyon High School with 2,423 students
- Zoned C-2, City of Phoenix

DEMOGRAPHICS

	1 Mile	3 Miles	5 Miles
2024 Est Population	17,127	150,535	366,771
2029 Est Population	18,437	163,727	393,118
Average HH Income	\$105,477	\$98,126	\$88,130
Daytime Population	11,435	111,338	305,491

Year: 2024 | Source: Esri

TRAFFIC COUNTS

Camelback Road	25,786 VDP
91st Avenue	15,651 VPD

Year: 2023 | Source: CoStar/MPSI

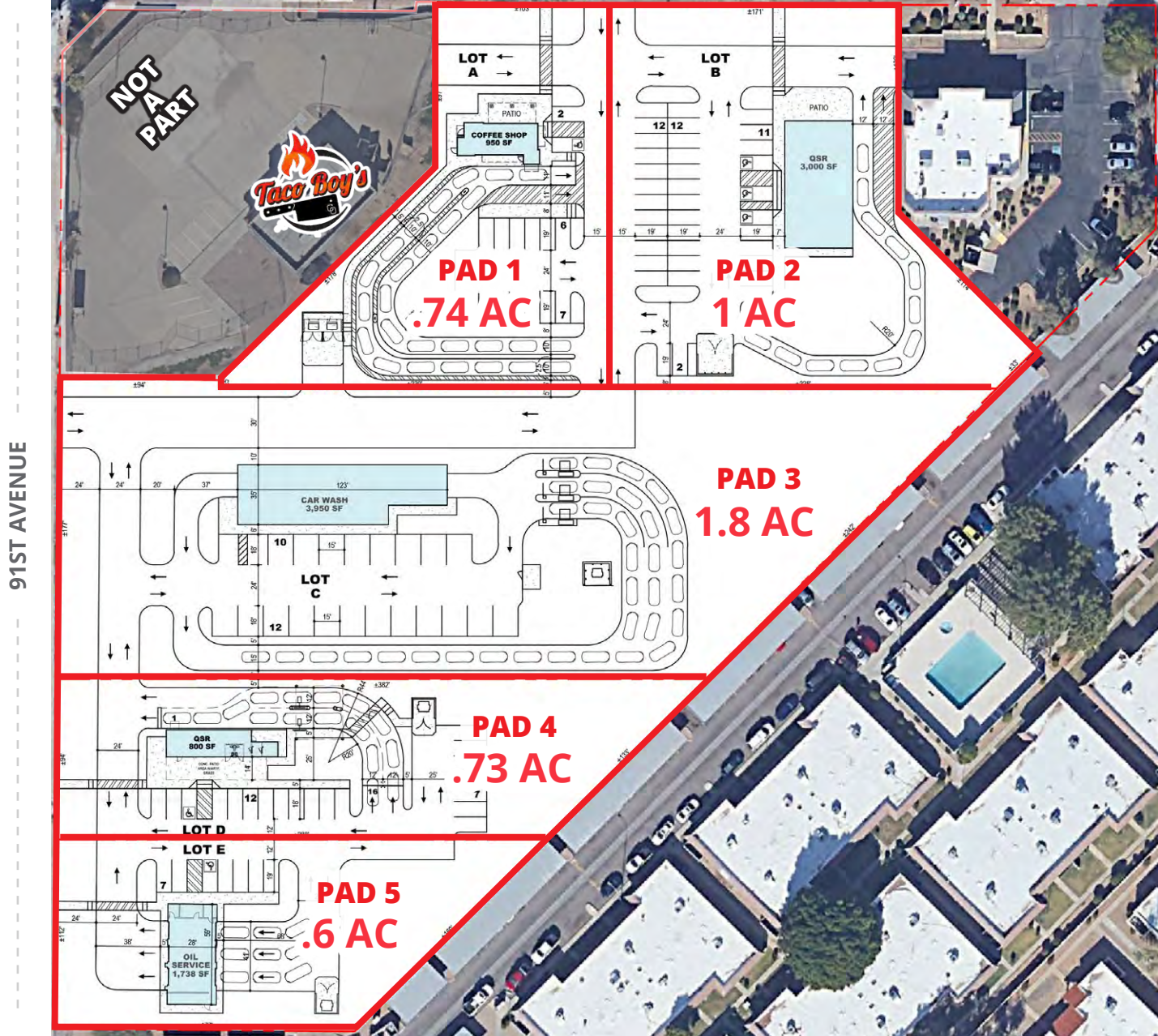


Pads Available

SEC Camelback Rd & 91st Ave | Phoenix, AZ 85037



CAMELBACK ROAD



Pads Available

SEC Camelback Rd & 91st Ave | Phoenix, AZ 85037



Copper Canyon High School
2,423 Students

StoneHaven Master Planned Community
1,392 Units

PARCEL 21 (COMMERCIAL)

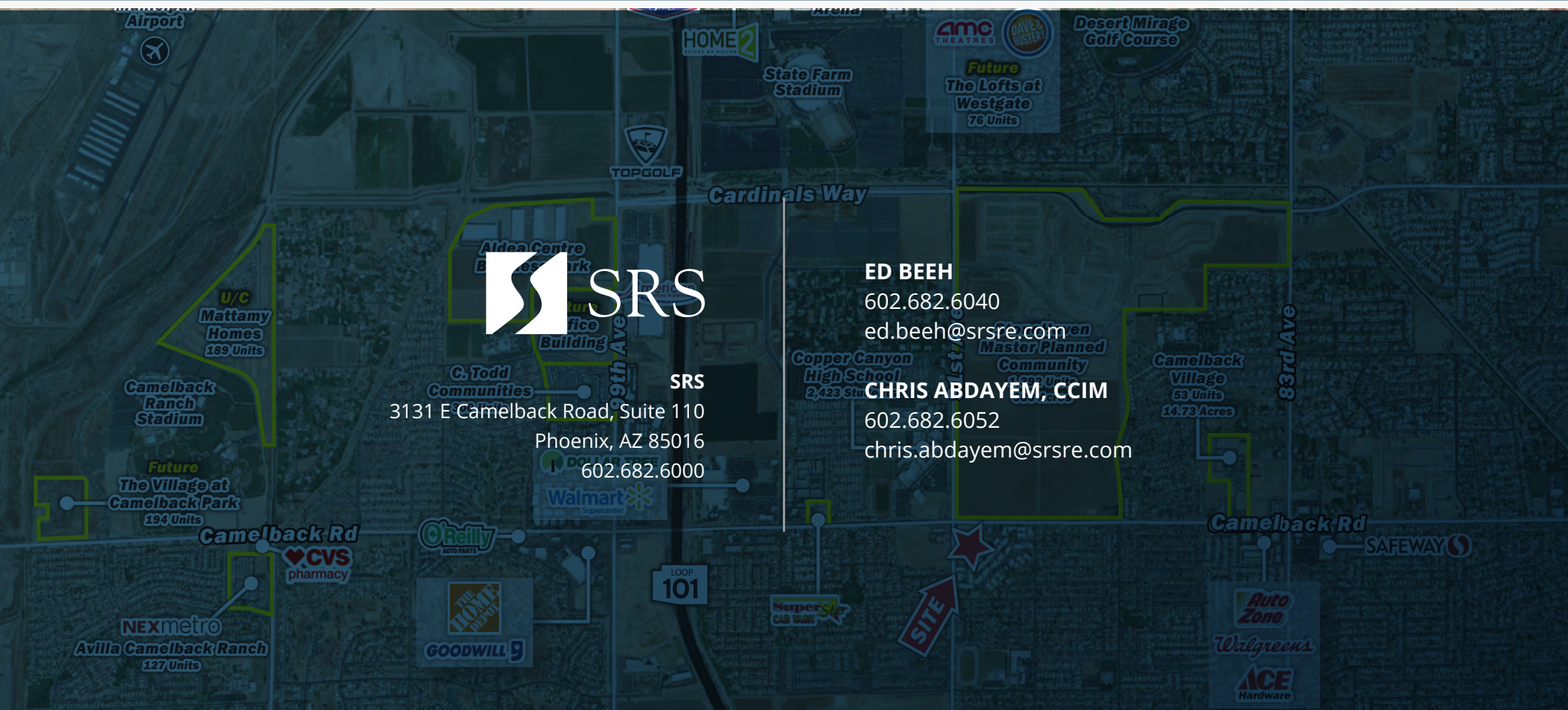
PLANNED RETAIL



SEC Camelback Road & 91st Avenue

Phoenix, Arizona 85037





SRS
3131 E Camelback Road, Suite 110
Phoenix, AZ 85016
602.682.6000

ED BEEH
602.682.6040
ed.beeh@srsre.com

CHRIS ABDAYEM, CCIM
602.682.6052
chris.abdayem@srsre.com

SRSRE.COM

© SRS

The information presented was obtained from sources deemed reliable;
however SRS does not guarantee its completeness or accuracy.