

## Retail Space for Lease

**Get more  
information**

\*Sales Representative

**Ali Baker\***

Principal  
647.252.4151  
ali.baker@avisonyoung.com

**Calvin Holland\***

Senior Associate  
416.673.4020  
calvin.holland@avisonyoung.com

**Caitlyn Micuda\***

Associate  
416.673.4055  
caitlyn.micuda@avisonyoung.com

avisonyoung.ca

222 Bay St., Suite 2500, Box 245, Toronto, ON M5K 1J5

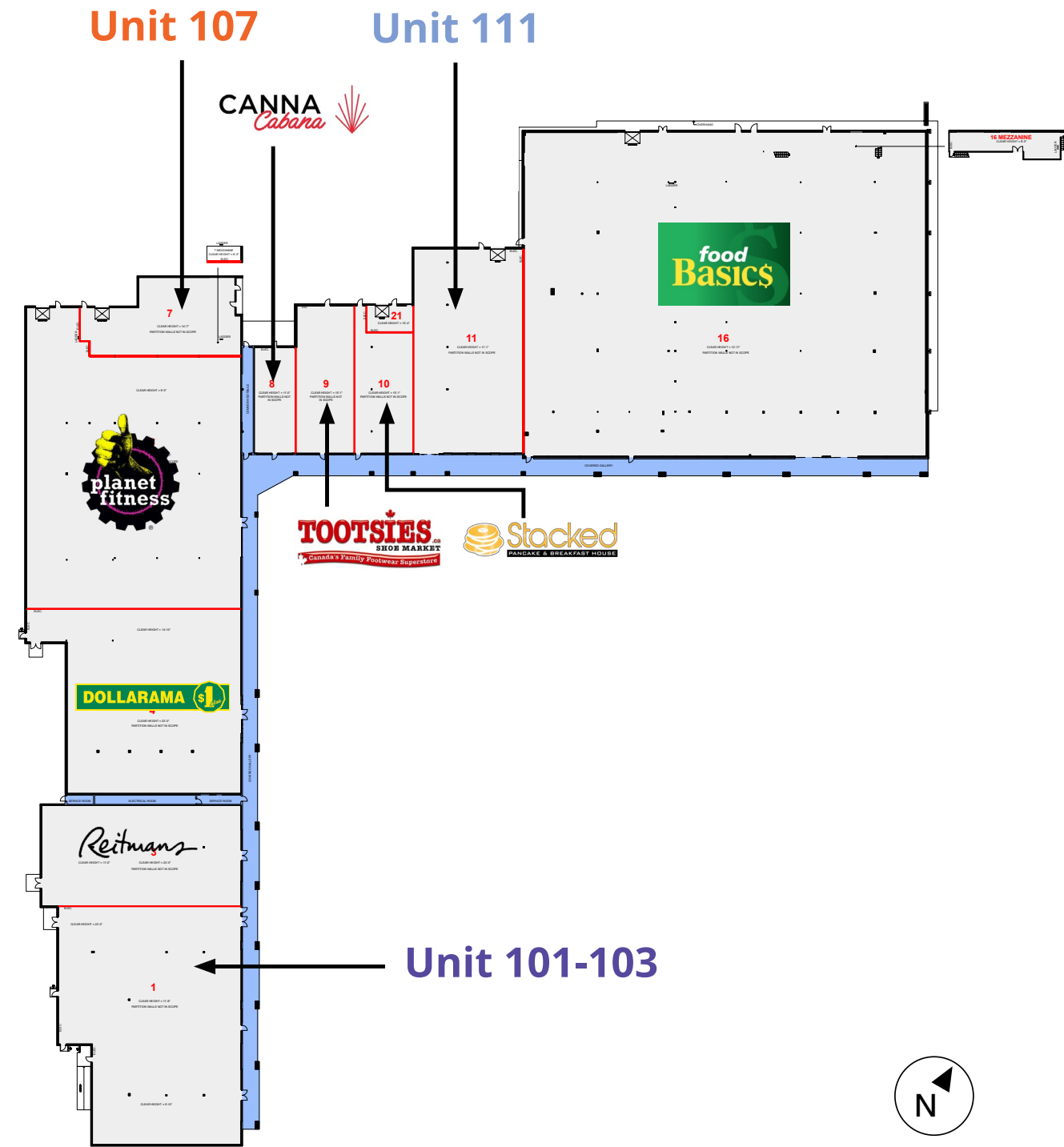
© 2026 Avison Young Commercial Real Estate (Ontario) Inc. All rights reserved. E. & O.E.: The information contained herein was obtained from sources which we deem reliable and, while thought to be correct, is not guaranteed by Avison Young.

# Overall Site Plan

**Unit 101-103**  
14,438 sf

**Unit 107**  
3,900 sf

**Unit 111**  
8,019 sf



## Unit 101-103

# 14,438 sf

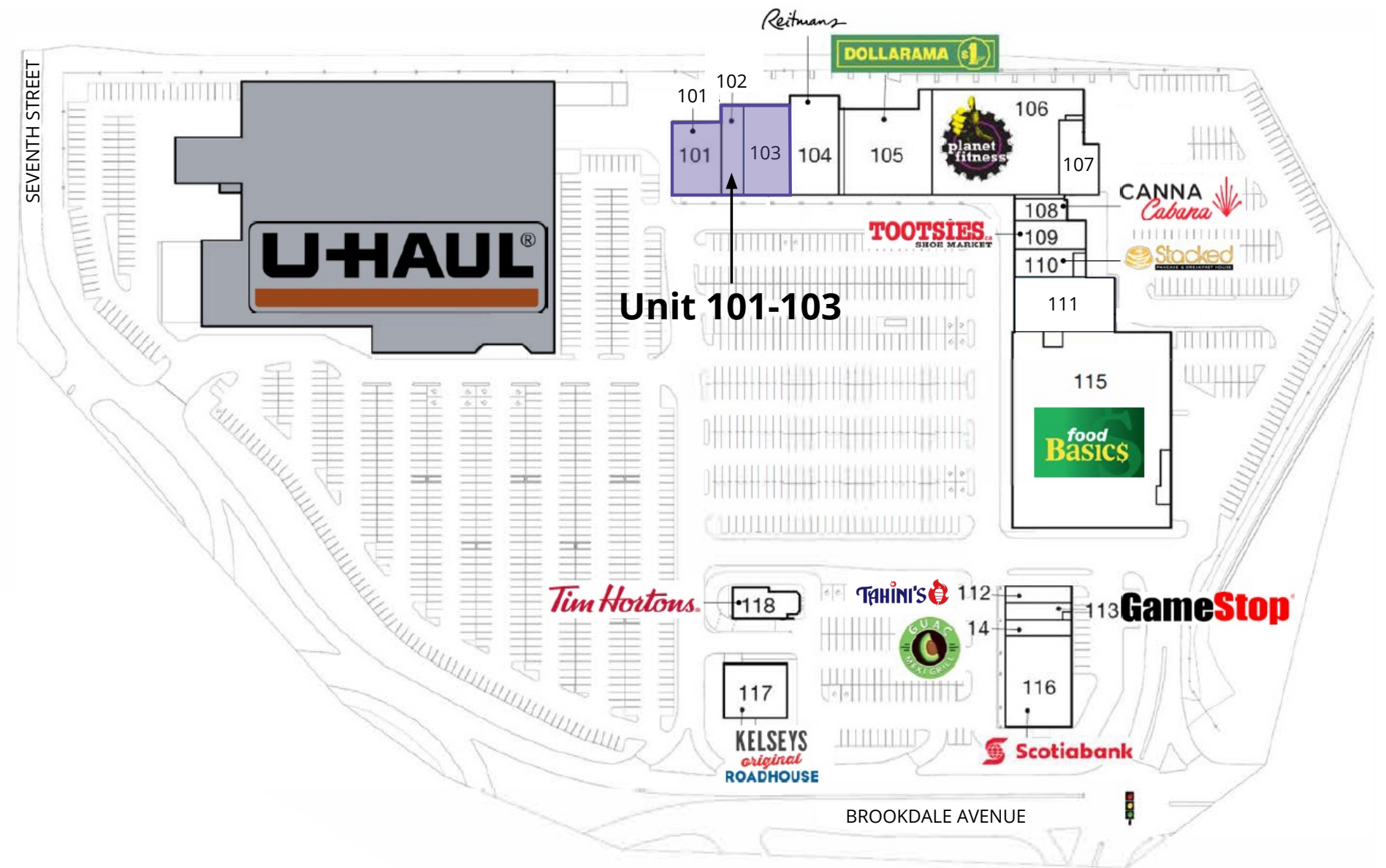
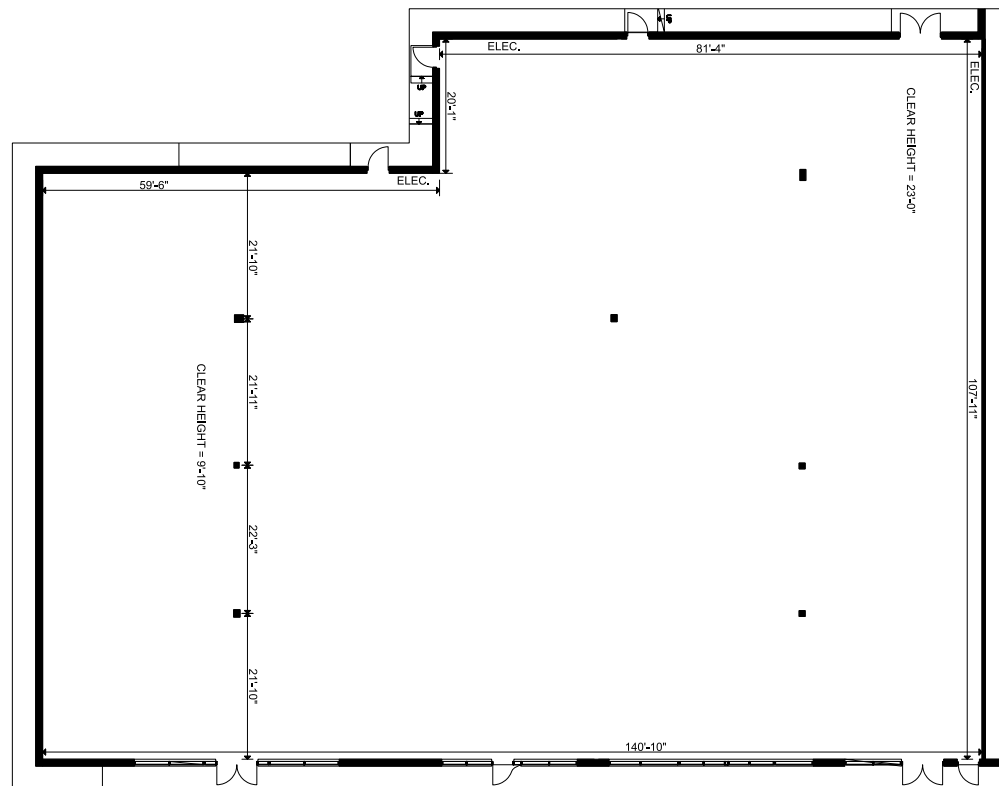
<b>Availability</b> Contact Listing Agents	<b>Net Rent</b> \$25.00 PSF	<b>TMI</b> \$13.46 PSF	<b>Zoning Code</b> CC (Community Commercial)
---	--------------------------------	---------------------------	---

- Prominent end cap unit with excellent visibility and branding potential.
- Suitable for a variety of uses including home improvement, recreation, medical and more.

### The Site

- Grocery anchored site located at Brookdale Ave & Ninth St W, just South of Highway 401.
- 750 on site surface parking spots and easy customer access.
- Established retail plaza with a strong tenant mix on site including Food Basics, Planet Fitness, Dollarama, Scotiabank, Tim Hortons, Kelsey's and more.
- U Haul is a shadow anchor.

### Floor Plan - Unit 101-103



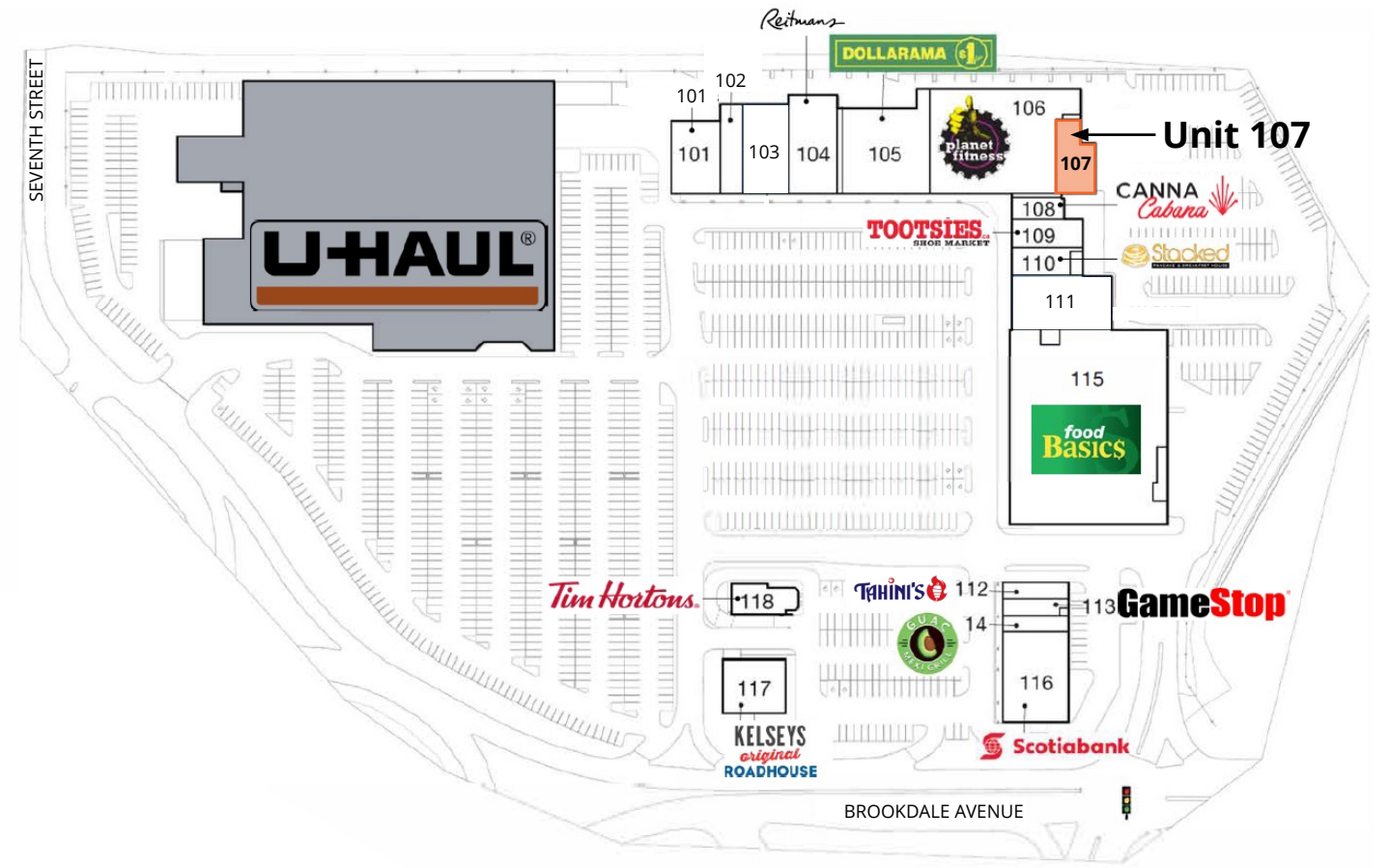
# Unit 107 3,900 sf

<b>Availability</b> Immediate	<b>Net Rent</b> \$25.00 PSF	<b>TMI</b> \$13.46 PSF	<b>Zoning Code</b> CC (Community Commercial)
----------------------------------	--------------------------------	---------------------------	---

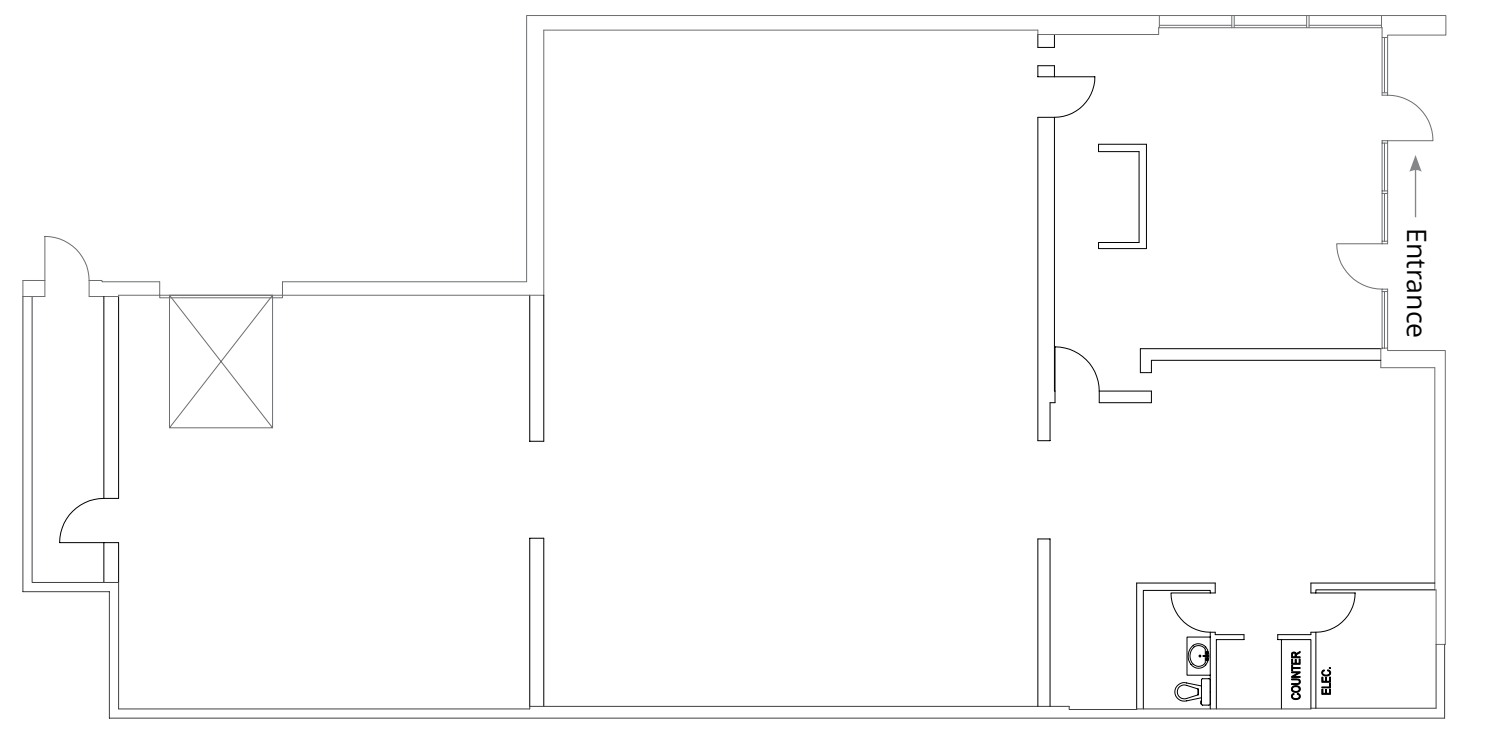
- Suitable for daycare, recreation, education and other clean retail concepts.
- Ability to add outdoor area.
- Positioned next to an internal corridor that links to the opposite side of the plaza.

### The Site

- Grocery anchored site located at Brookdale Ave & Ninth St W, just South of Highway 401.
- 750 on site surface parking spots and easy customer access.
- Established retail plaza with a strong tenant mix on site including Food Basics, Planet Fitness, Dollarama, Scotiabank, Tim Hortons, Kelsey's and more.
- U Haul is a shadow anchor.



Floor Plan - Unit 107



# Unit 111

## 8,019 sf

<b>Availability</b> Immediate	<b>Net Rent</b> \$25.00 PSF	<b>TMI</b> \$13.46 PSF	<b>Zoning Code</b> CC (Community Commercial)
----------------------------------	--------------------------------	---------------------------	---

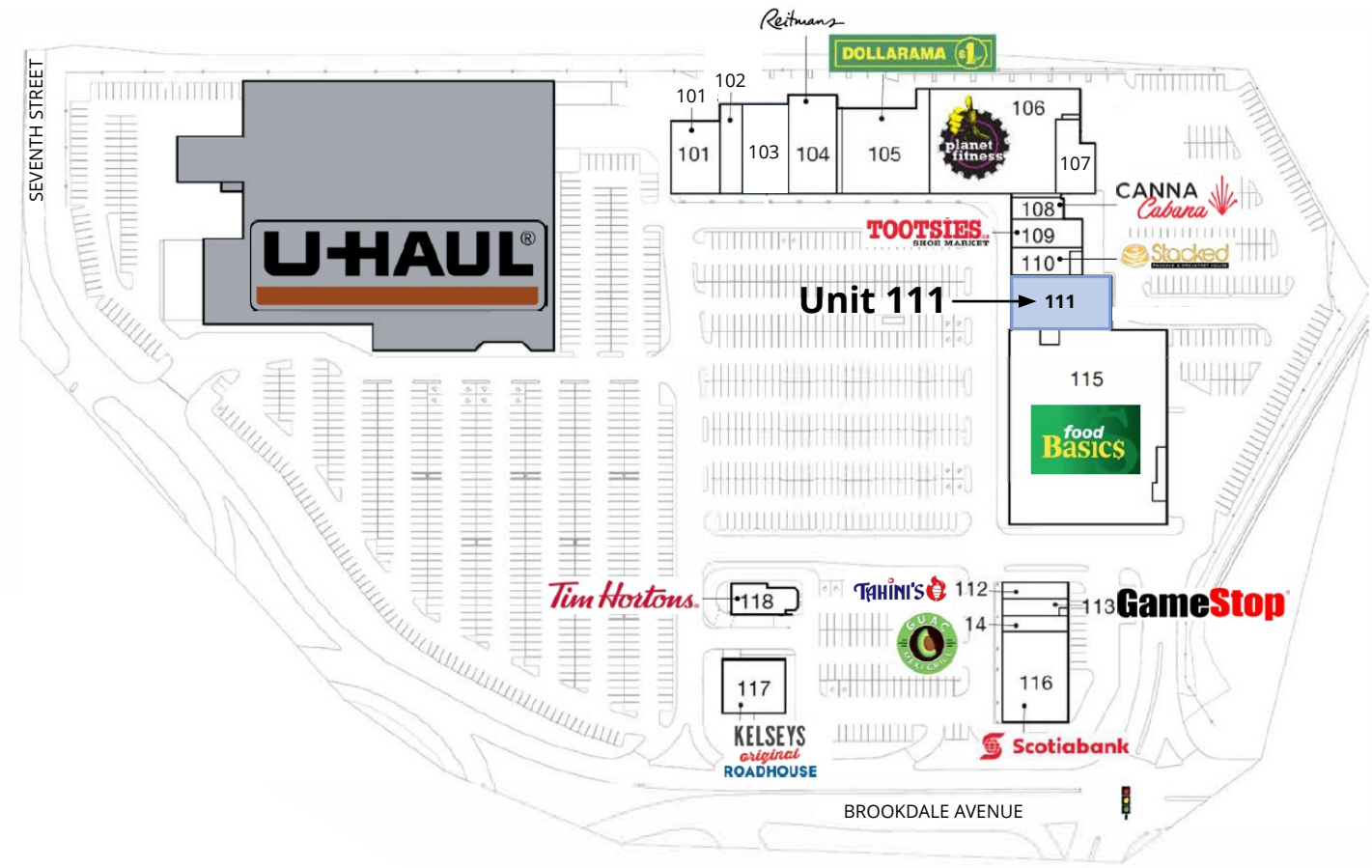
- Large format retail space with prominent frontage, directly adjoining Food Basics.
- Suitable for furniture, medical, recreational uses, and more.
- Washrooms in place.
- One dedicated drive up loading dock.

### The Site

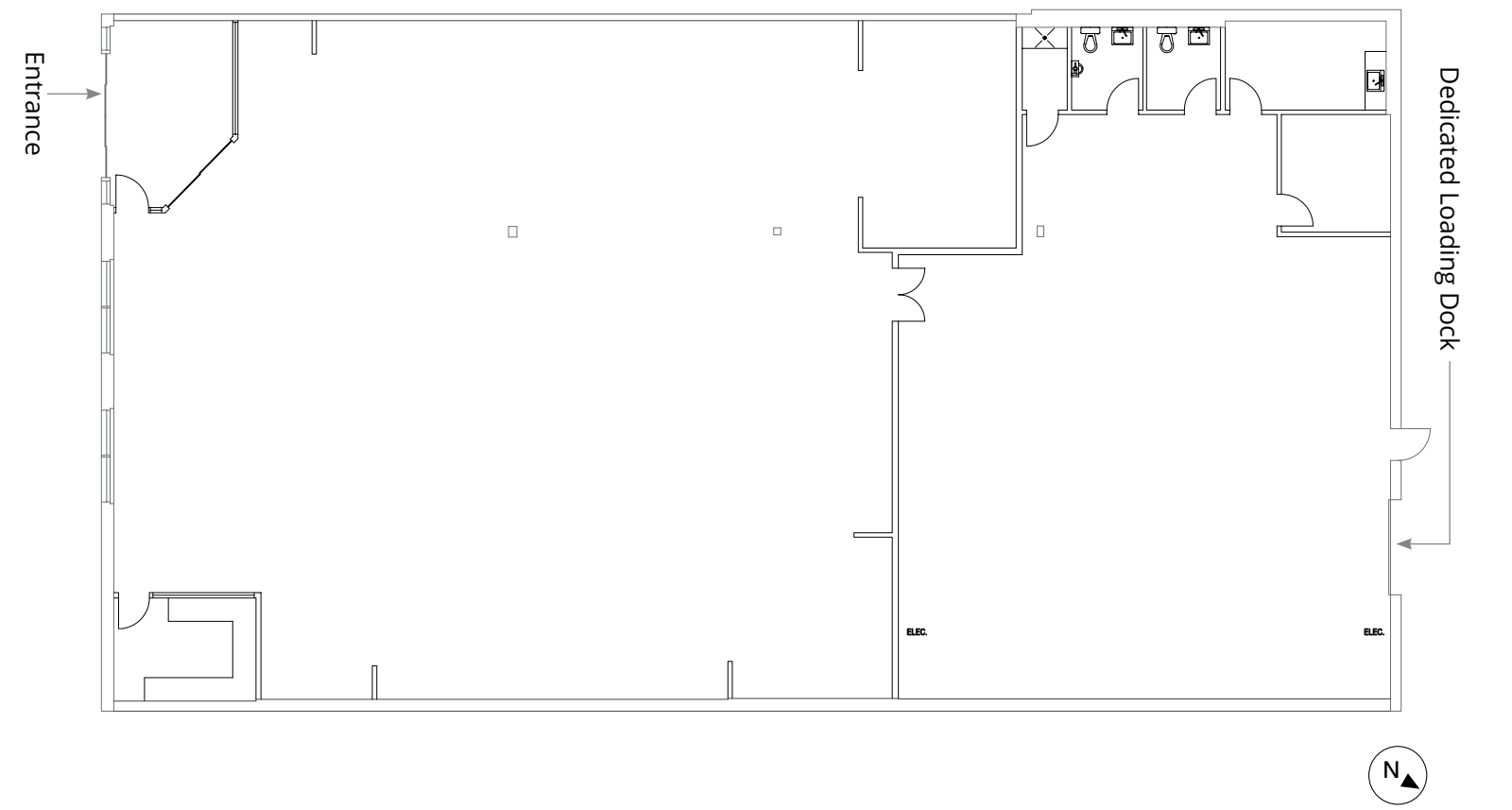
- Grocery anchored site located at Brookdale Ave & Ninth St W, just South of Highway 401.
- 750 on site surface parking spots and easy customer access.
- Established retail plaza with a strong tenant mix on site including Food Basics, Planet Fitness, Dollarama, Scotiabank, Tim Hortons, Kelsey's and more.
- U Haul is a shadow anchor.



This image has been edited



### Floor Plan - Unit 111



# Retailers nearby

Brookdale Centre  
Retail Space for Lease

## Cornwall Demographics

Source: Stats Canada, Esri

**\$94,683**

2025 AVERAGE HOUSEHOLD INCOME

**67,687**

2025 TOTAL POPULATION

## Traffic Count

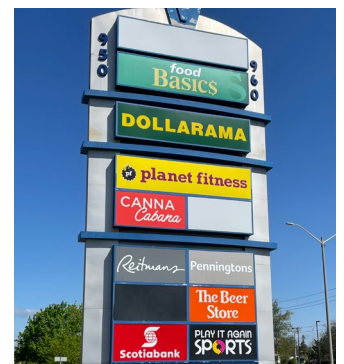
**17,654**

ANNUAL AVERAGE DAILY TRAFFIC ALONG BROOKDALE AVENUE



Join an established  
tenant mix on site





# Retail Space for Lease

Get more information \*Sales Representative

**Ali Baker\***

Principal  
647.252.4151  
ali.baker@avisonyoung.com

**Calvin Holland\***

Senior Associate  
416.673.4020  
calvin.holland@avisonyoung.com

**Caitlyn Micuda\***

Associate  
416.673.4055  
caitlyn.micuda@avisonyoung.com