



Joy Village

10515-10545 Joy Rd, Detroit, MI 48204



JMC MANAGEMENT LLC
A FULL SERVICE BROKERAGE AND MANAGEMENT FIRM

Trena Edmondson

JMC Management, LLC

24500 Northwestern Hwy, Suite 100, Southfield, MI 48075

Trena.edmondson@jmcmanagement.com

(586) 427-9410 Ext: 113



Joy Village

\$19.10 - \$19.69 /SF/YR

Fantastic new retail/office space for lease. Great visibility & foot traffic, excellent location....

- Newly Rehabbed Property



Rental Rate: \$19.10 - \$19.69 /SF/YR

Property Type: Retail

Property Subtype: Storefront

Gross Leasable Area: 8,965 SF

Year Built: 2005

Walk Score ©: 53 (Somewhat Walkable)

Transit Score ©: 39 (Some Transit)

Rental Rate Mo: \$1.64 /SF/MO

1st Floor Ste 10519

Space Available	975 SF
Rental Rate	\$19.69 /SF/YR
Date Available	Now
Service Type	Modified Gross
Space Type	New
Space Use	Retail
Lease Term	Negotiable

• Prime location • Ample parking available • 24/7 access • Flexible lease terms • Suitable for various businesses • Affordable rates

1

1st Floor Ste 10527

Space Available	1,005 SF
Rental Rate	\$19.10 /SF/YR
Date Available	Now
Service Type	Modified Gross
Built Out As	Standard Retail
Space Type	New
Space Use	Retail
Lease Term	2 Years

Newly renovated unit and space

2



10515-10545 Joy Rd, Detroit, MI 48204

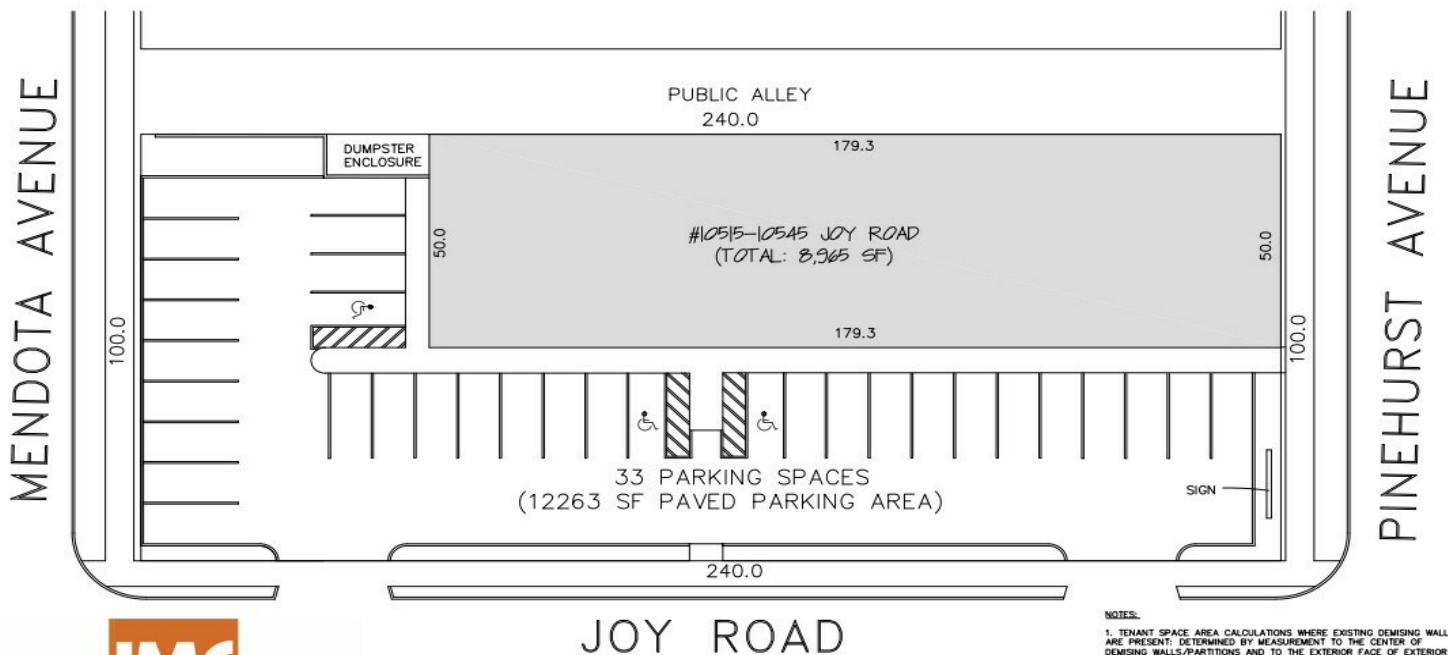
Fantastic new retail/office space for lease. Great visibility & foot traffic, excellent location.

Property Photos



Web Site Pics 016

JOY VILLAGE 10515 - 10545 JOY ROAD



- NOTES:
1. TENANT SPACE AREA CALCULATIONS WHERE EXISTING DEMISING WALLS ARE PRESENT: DETERMINED BY MEASUREMENT TO THE CENTER OF DEMISING WALLS/PARTITIONS AND TO THE EXTERIOR FACE OF EXTERIOR WALLS.
 2. INTERIOR TENANT SPACE WIDTH AND DEPTH DIMENSIONS ARE APPROXIMATE AS SHOWN. FOR EXACT WIDTH AND DEPTH DIMENSIONS, EACH TENANT SPACE SHOULD BE MEASURED BY A QUALIFIED PROFESSIONAL.
 3. THE ORIENTATION OF THE INDICATED NORTH ARROW MAY NOT BE "TRUE NORTH", BUT IS SUBSTANTIALLY NORTH, AS SUCH, IT IS CALLED "NORTH" AND IS NOT INTENDED FOR NAVIGATIONAL USAGE.

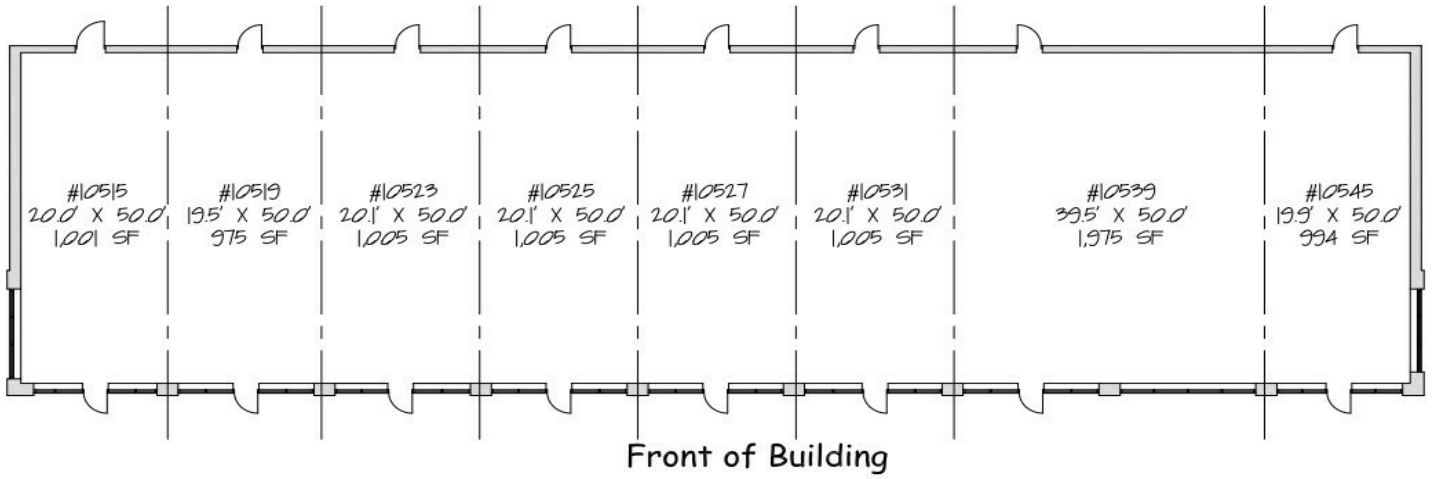


JMC MANAGEMENT LLC
A FULL SERVICE BROKERAGE AND MANAGEMENT FIRM

NORTH
SITE PLAN
NOT TO SCALE

Site Plan

JOY VILLAGE 10515 - 10545 JOY ROAD



JMC MANAGEMENT LLC
A FULL SERVICE BROKERAGE AND MANAGEMENT FIRM



FIRST FLOOR PLAN
NOT TO SCALE

NOTES:

1. TENANT SPACE AREA CALCULATIONS WHERE EXISTING DEMISING WALLS ARE PRESENT, DETERMINED BY MEASUREMENT TO THE CENTER OF DEMISING WALLS/PARTITIONS AND TO THE EXTERIOR FACE OF EXTERIOR WALLS.
2. INTERIOR TENANT SPACE WIDTH AND DEPTH DIMENSIONS ARE APPROXIMATE AS SHOWN. FOR EXACT WIDTH AND DEPTH DIMENSIONS, EACH TENANT SPACE SHOULD BE MEASURED BY A QUALIFIED PROFESSIONAL.
3. THE ORIENTATION OF THE INDICATED NORTH ARROW MAY NOT BE TRUE NORTH, BUT IS SUBSTANTIALLY NORTH. AS SUCH, IT IS CALLED "NORTH" AND IS NOT INTENDED FOR NAVIGATIONAL USAGE.
4. UNIT SIZES & AREA ARE APPROXIMATE.

Floor Plan