

# SALE

**10 W MAIN ST**  
10 W Main St Cary, IL 60013



## PROPERTY DESCRIPTION

High profile INVESTMENT PROPERTY or REDEVELOPMENT. 8,280 square foot, multi-tenant office building. Traffic light corner on MAIN ST. (Rt. 14) and 1st Street. Ample parking and the building backs up to a pond.

## PROPERTY HIGHLIGHTS

- Hard Corner - Rt. 14 & 1st St.
- Ample Parking
- Visibility & Signage
- Flexible Floor Plan
- Investment or Owner/User

## OFFERING SUMMARY

Sale Price:	\$689,000
Number of Units:	6
Lot Size:	0.33 Acres
Building Size:	8,280 SF

DEMOGRAPHICS	1 MILE	5 MILES	10 MILES
Total Households	3,503	35,731	137,085
Total Population	9,254	91,568	368,653
Average HH Income	\$110,627	\$116,179	\$122,508

**Jim Finnegan**  
(630) 947-5024

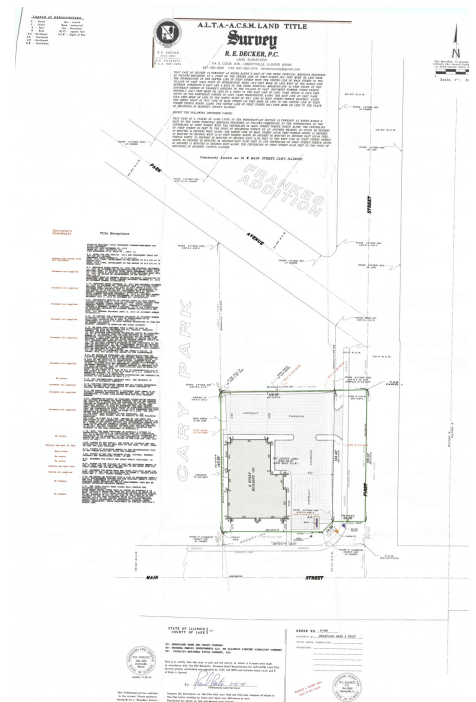
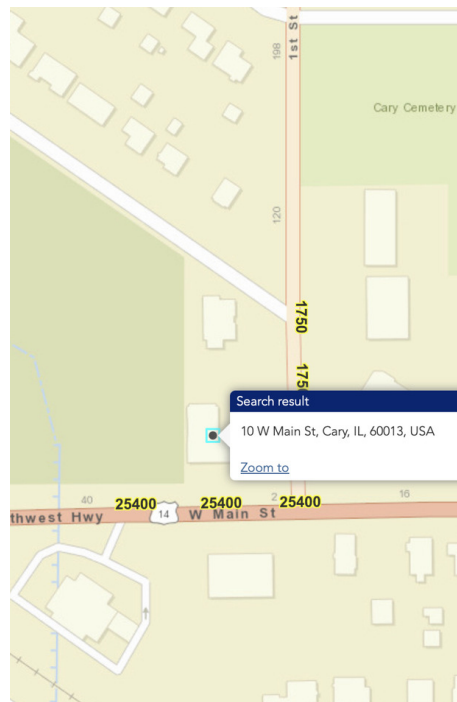


**COLDWELL BANKER  
COMMERCIAL**  
REAL ESTATE GROUP



# SALE

**10 W MAIN ST**  
10 W Main St Cary, IL 60013



**Jim Finnegan**  
(630) 947-5024

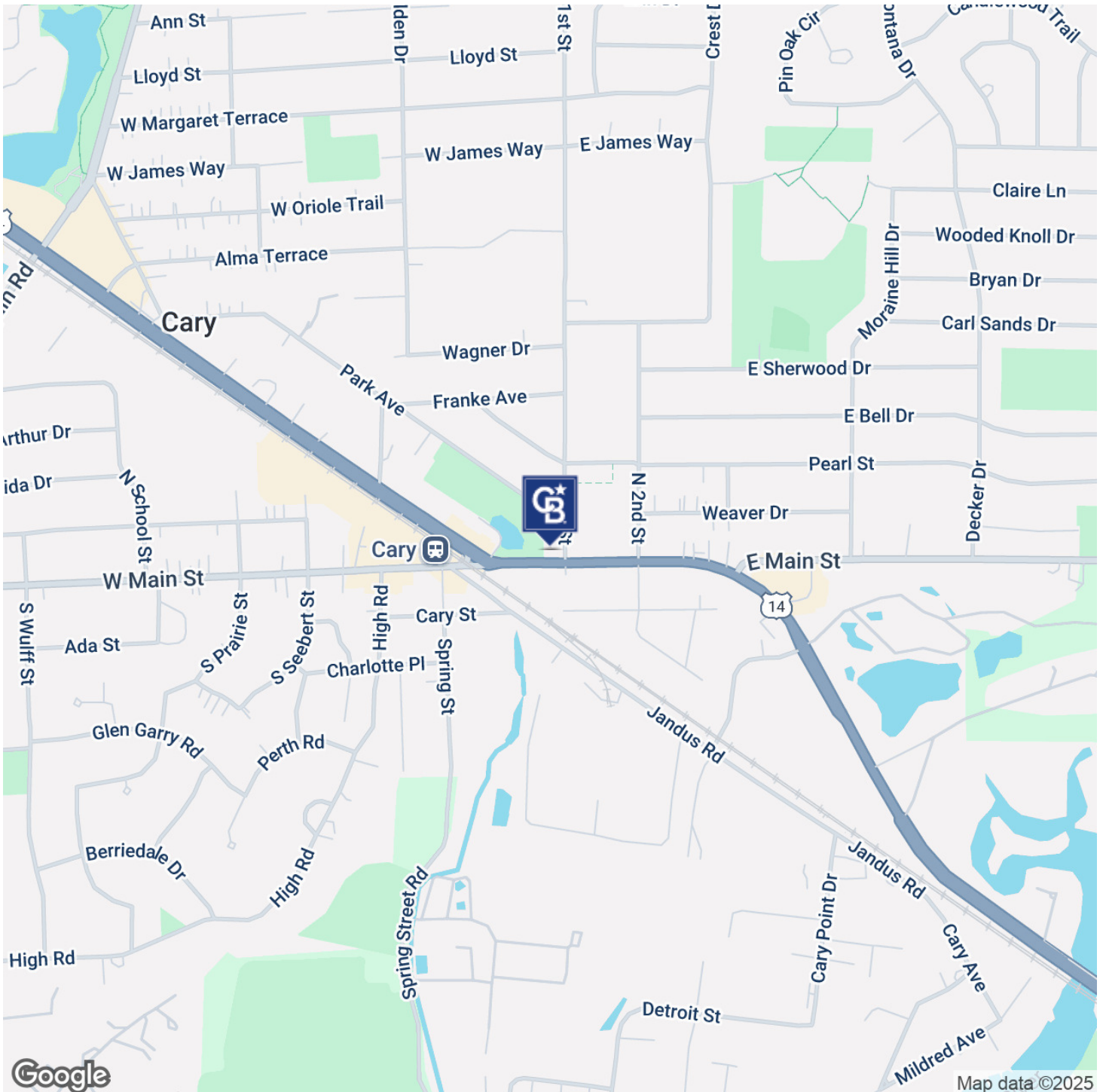


**COLDWELL BANKER  
COMMERCIAL**  
REAL ESTATE GROUP



# SALE

**10 W MAIN ST**  
10 W Main St Cary, IL 60013



**Jim Finnegan**  
(630) 947-5024



**COLDWELL BANKER**  
**COMMERCIAL**  
REAL ESTATE GROUP