

241 Lombard Street

Thousand Oaks, CA 91360

NAI Capital
COMMERCIAL REAL ESTATE SERVICES, WORLDWIDE

FOR LEASE

Turn-Key Office Suites

Evelyn Hamilton

818.742.1646

ehamilton@naicapital.com

CA DRE #01925029

No warranty, express or implied, is made as to the accuracy of the information contained herein. This information is submitted subject to errors, omissions, change of price, rental or other conditions, withdrawal without notice, and is subject to any special listing conditions imposed by our principals. Cooperating brokers, buyers, tenants and other parties who receive this document should not rely on it, but should use it as a starting point of analysis, and should independently confirm the accuracy of the information contained herein through a due diligence review of the books, records, files and documents that constitute reliable sources of the information described herein. Logos are for identification purposes only and may be trademarks of their respective companies. NAI Capital Commercial, Inc. CAL DRE Lic. #02130474

PROPERTY FEATURES

- ❖ **Premium Office building (13,838 SF)** featuring two stories - fully renovated in 2000
- ❖ **Prime location** just two blocks from the lively Moorpark Road corridor, near The Oaks Mall & Janss Marketplace, with quick access to the 101 & 23 freeways
- ❖ **Ample parking** with 4/1000 Parking
- ❖ **Modern “Mid-Century” aesthetic** with polished concrete floors, high ceilings, and upscale finishes
- ❖ **Designed for productivity** with access to a fully equipped shared kitchen – ideal for breaks, meetings, or casual team gatherings
- ❖ **Inviting outdoor amenities** including a beautifully landscaped courtyard with outdoor seating
- ❖ **Immediate access** to a wide range of business-friendly amenities, including dozens of nearby restaurants, cafés, and retail shops



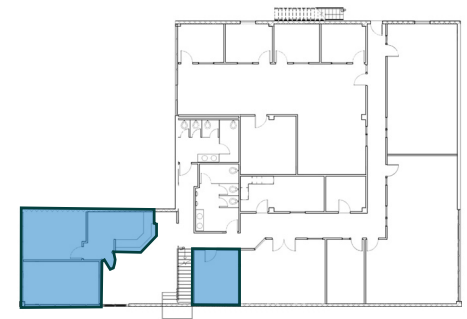
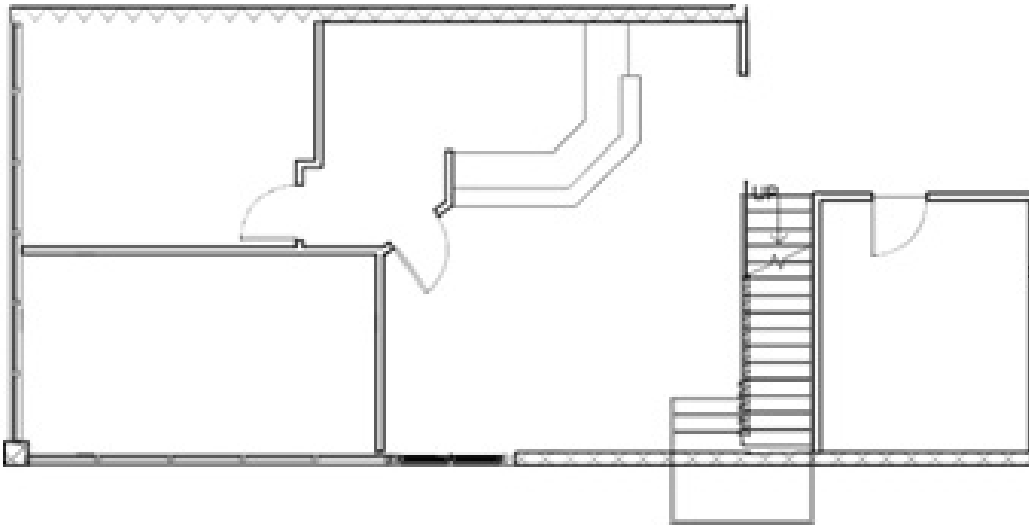
CURRENT AVAILABILITY

FLOOR	SUITE	SIZE	RATE	AVAILABILITY
1	101	1,049 RSF	\$2.05 MG + J	NOW
2	250	1,736 RSF	\$2.05 MG + J	NOW

Evelyn Hamilton
818.742.1646
ehamilton@naicapital.com
CA DRE #01925029

No warranty, express or implied, is made as to the accuracy of the information contained herein. This information is submitted subject to errors, omissions, change of price, rental or other conditions, withdrawal without notice, and is subject to any special listing conditions imposed by our principals. Cooperating brokers, buyers, tenants and other parties who receive this document should not rely on it, but should use it as a starting point of analysis, and should independently confirm the accuracy of the information contained herein through a due diligence review of the books, records, files and documents that constitute reliable sources of the information described herein. Logos are for identification purposes only and may be trademarks of their respective companies. NAI Capital Commercial, Inc. CAL DRE Lic. #02130474

FLOOR	SUITE	SIZE	RATE	AVAILABILITY
1	101	1,049 RSF	\$2.05/SF, MG + J	NOW



Lombard St

SUITE FEATURES

- ☐ 3 offices where 2 of the offices have floor to ceiling window line
- ☐ Reception area with built in desk
- ☐ Polished concrete floors
- ☐ Access to common area kitchen

*Not to Scale

Evelyn Hamilton
818.742.1646
ehamilton@naicapital.com
CA DRE #01925029

No warranty, express or implied, is made as to the accuracy of the information contained herein. This information is submitted subject to errors, omissions, change of price, rental or other conditions, withdrawal without notice, and is subject to any special listing conditions imposed by our principals. Cooperating brokers, buyers, tenants and other parties who receive this document should not rely on it, but should use it as a starting point of analysis, and should independently confirm the accuracy of the information contained herein through a due diligence review of the books, records, files and documents that constitute reliable sources of the information described herein. Logos are for identification purposes only and may be trademarks of their respective companies. NAI Capital Commercial, Inc. CAL DRE Lic. #02130474

241 LOMBARD STREET
Thousand Oaks, CA 91360

NAICapital
COMMERCIAL REAL ESTATE SERVICES, WORLDWIDE

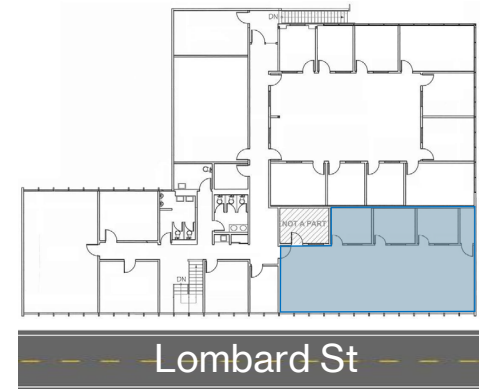
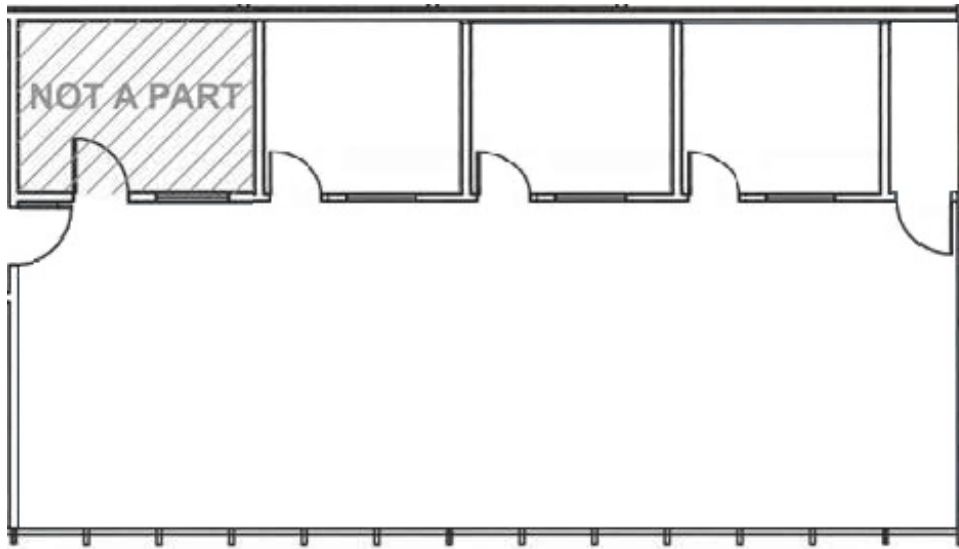
Suite 101



Evelyn Hamilton
818.742.1646
ehamilton@naicapital.com
CA DRE #01925029

No warranty, express or implied, is made as to the accuracy of the information contained herein. This information is submitted subject to errors, omissions, change of price, rental or other conditions, withdrawal without notice, and is subject to any special listing conditions imposed by our principals. Cooperating brokers, buyers, tenants and other parties who receive this document should not rely on it, but should use it as a starting point of analysis, and should independently confirm the accuracy of the information contained herein through a due diligence review of the books, records, files and documents that constitute reliable sources of the information described herein. Logos are for identification purposes only and may be trademarks of their respective companies. NAI Capital Commercial, Inc. CAL DRE Lic. #02130474

FLOOR	SUITE	SIZE	RATE	AVAILABILITY
2	250	1,736 RSF	\$2.05/SF, MG + J	NOW



SUITE FEATURES

- ☐ 3 interior offices, 1 storage room
- ☐ Abundance of natural light from south window line
- ☐ Offered furnished or unfurnished to suit your needs

*Not to Scale

Click 360 icon for virtual tour



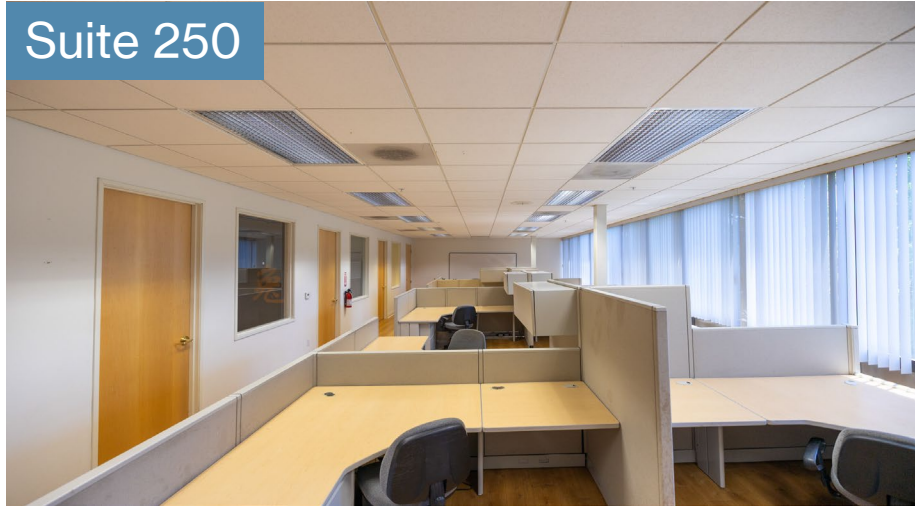
Evelyn Hamilton
818.742.1646
ehamilton@naicapital.com
CA DRE #01925029

No warranty, express or implied, is made as to the accuracy of the information contained herein. This information is submitted subject to errors, omissions, change of price, rental or other conditions, withdrawal without notice, and is subject to any special listing conditions imposed by our principals. Cooperating brokers, buyers, tenants and other parties who receive this document should not rely on it, but should use it as a starting point of analysis, and should independently confirm the accuracy of the information contained herein through a due diligence review of the books, records, files and documents that constitute reliable sources of the information described herein. Logos are for identification purposes only and may be trademarks of their respective companies. NAI Capital Commercial, Inc. CAL DRE Lic. #02130474

241 LOMBARD STREET
Thousand Oaks, CA 91360

NAI Capital
COMMERCIAL REAL ESTATE SERVICES, WORLDWIDE

Suite 250



Evelyn Hamilton
818.742.1646
ehamilton@naicapital.com
CA DRE #01925029

No warranty, express or implied, is made as to the accuracy of the information contained herein. This information is submitted subject to errors, omissions, change of price, rental or other conditions, withdrawal without notice, and is subject to any special listing conditions imposed by our principals. Cooperating brokers, buyers, tenants and other parties who receive this document should not rely on it, but should use it as a starting point of analysis, and should independently confirm the accuracy of the information contained herein through a due diligence review of the books, records, files and documents that constitute reliable sources of the information described herein. Logos are for identification purposes only and may be trademarks of their respective companies. NAI Capital Commercial, Inc. CAL DRE Lic. #02130474

241 LOMBARD STREET
Thousand Oaks, CA 91360

NAICapital
COMMERCIAL REAL ESTATE SERVICES, WORLDWIDE



Evelyn Hamilton
818.742.1646
ehamilton@naicapital.com
CA DRE #01925029

No warranty, express or implied, is made as to the accuracy of the information contained herein. This information is submitted subject to errors, omissions, change of price, rental or other conditions, withdrawal without notice, and is subject to any special listing conditions imposed by our principals. Cooperating brokers, buyers, tenants and other parties who receive this document should not rely on it, but should use it as a starting point of analysis, and should independently confirm the accuracy of the information contained herein through a due diligence review of the books, records, files and documents that constitute reliable sources of the information described herein. Logos are for identification purposes only and may be trademarks of their respective companies. NAI Capital Commercial, Inc. CAL DRE Lic. #02130474

241 Lombard Street

Thousand Oaks, CA 91360

NAICapital
COMMERCIAL REAL ESTATE SERVICES, WORLDWIDE



FOR LEASE

Turn-Key Office Suites

Evelyn Hamilton

818.742.1646

ehamilton@naicapital.com

CA DRE #01925029

No warranty, express or implied, is made as to the accuracy of the information contained herein. This information is submitted subject to errors, omissions, change of price, rental or other conditions, withdrawal without notice, and is subject to any special listing conditions imposed by our principals. Cooperating brokers, buyers, tenants and other parties who receive this document should not rely on it, but should use it as a starting point of analysis, and should independently confirm the accuracy of the information contained herein through a due diligence review of the books, records, files and documents that constitute reliable sources of the information described herein. Logos are for identification purposes only and may be trademarks of their respective companies. NAI Capital Commercial, Inc. CAL DRE Lic. #02130474