

**FAMILIAN BUSINESS CENTER
4350 TRANSPORT STREET
VENTURA, CA 93003
(818) 519-0592**



**LOCATED ON THE CORNER OF TELEPHONE ROAD AND TRANSPORT STREET
FEATURING LARGE OFFICE/WAREHOUSE UNITS WITH PRIVATE GATED YARDS.
THE WELL-MAINTAINED FACILITIES PROVIDE CONVENIENT ACCESS TO THE
HIGHWAYS 101 AND 126.**

- PRIVATE GATED YARDS
- THREE PHASE POWER
- SPRINKLERED THROUGH OUT
- 12 X 14 LOADING DOORS
- INDIVIDUAL SIGNAGE ON ALL SUITES
- ENERGY EFFICIENT LIGHTING AND COOLING SYSTEMS
- 19 FOOT CLEAR HEIGHT

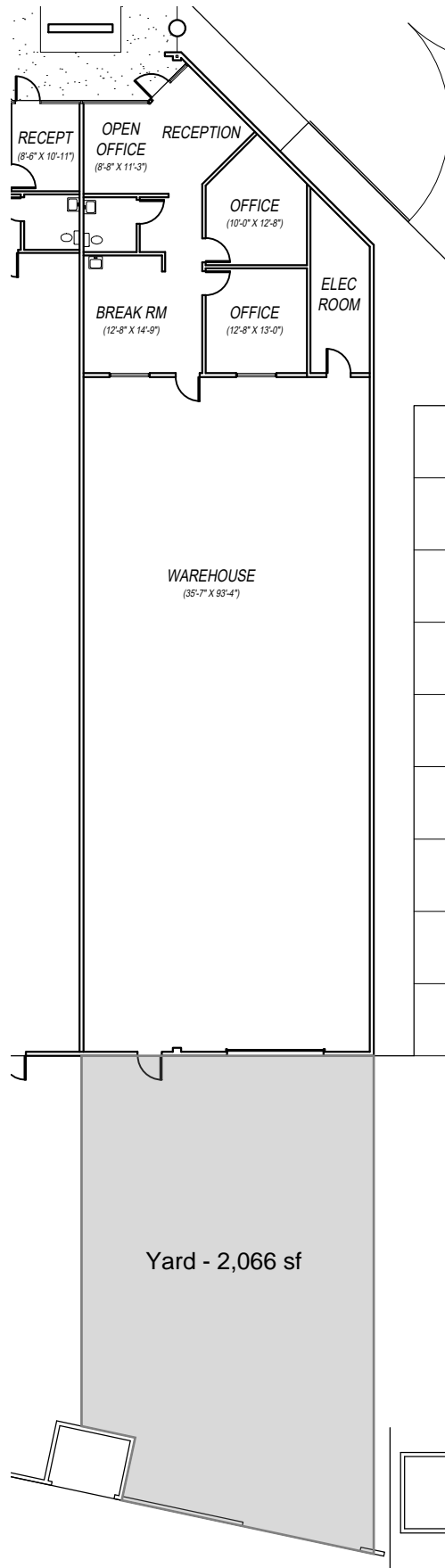
Office Warehouse Units

Building/Suite	Rentable SF	Rate/SF	Date Available	Description
4350 Transport Street Suite 110	4,285	\$1.45	Now	Reception, 2 private offices, bullpen and breakroom. Skylight in warehouse, LED lighting throughout. Approx. 2000 SF gated private storage yard.

CAM – \$0.14 per square foot.

For more information, call:

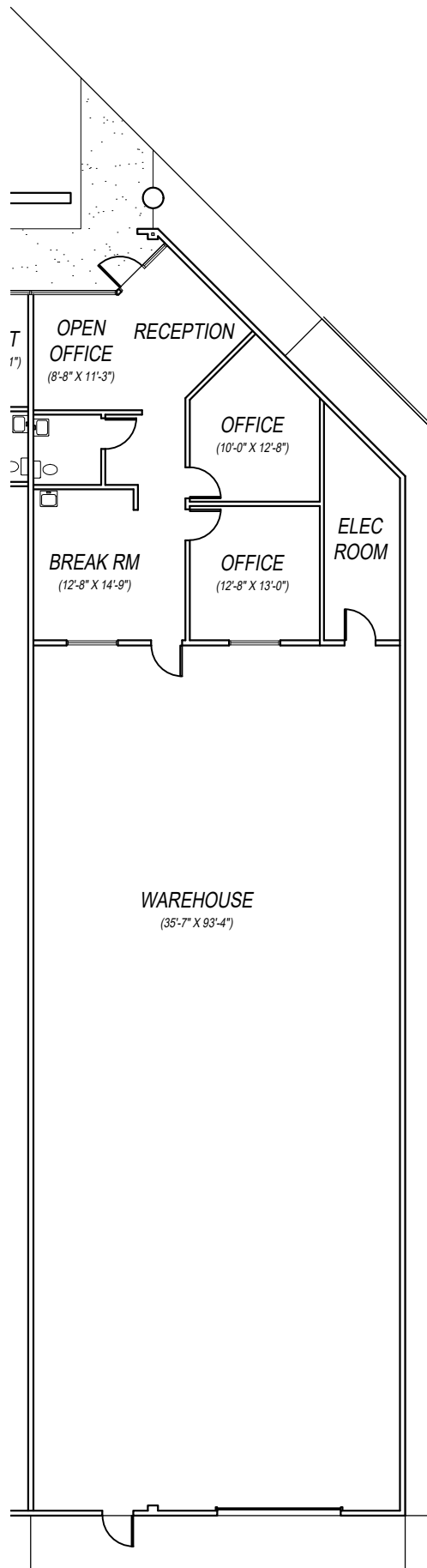
Ned Geoghegan, Director of Leasing **(818) 519-0592**.



FAMILIAN BUSINESS PARK - SUITE 110

4350 TRANSPORT ST VENTURA, CA

Scale: 3/64"=1'-0"



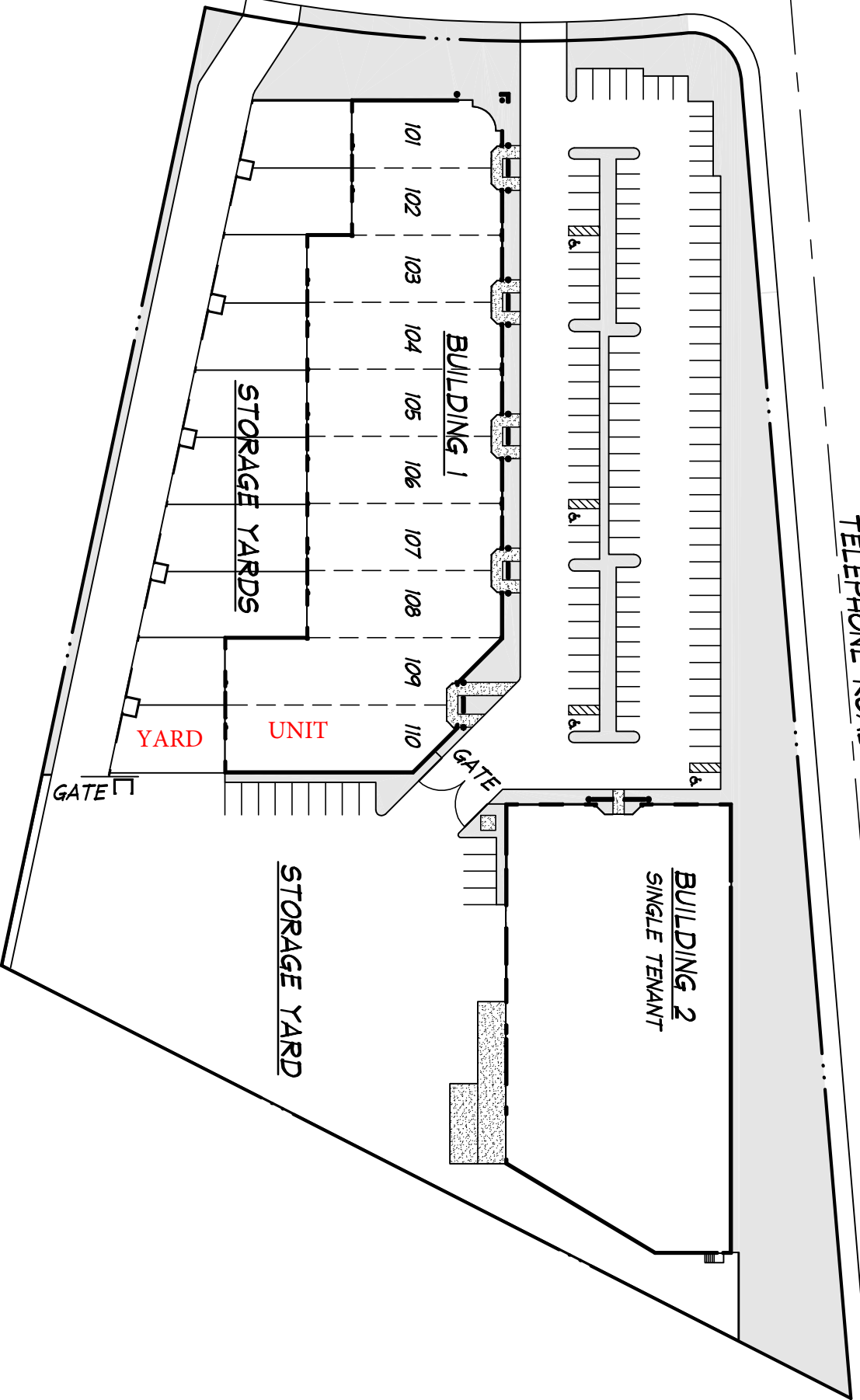
FAMILIAN BUSINESS PARK - SUITE 110

4350 TRANSPORT ST VENTURA, CA

Scale: 1/16"=1'-0"

TRANSPORT STREET

TELEPHONE ROAD



FAMILIAN BUSINESS CENTER

VENTURA, CA

