

For Sale

# Columbia City Ark Lodge

4812 Rainier Ave South, Seattle



## Retail & Office

11,120 square feet  
on three floors

- Corner lot totaling  
4,563 square feet

- Prime Columbia  
City location

- NC3P-40 zoning  
allows a wide  
range of retail,  
office and  
commercial uses

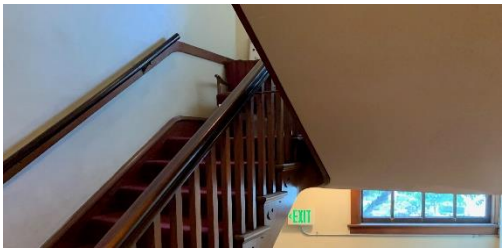
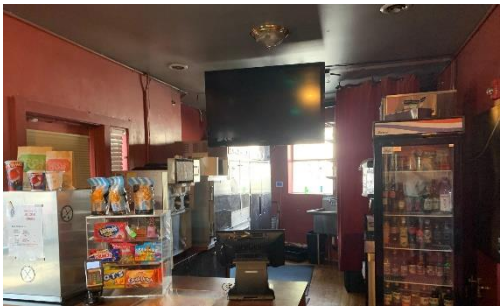
**\$3,000,000**

LGX Real Estate Associates

Hugh Winskill  
hwinskill@re-associates.com  
(206) 330-1794

Dean Anderson  
danderson@re-associates.com  
(206) 656-2353

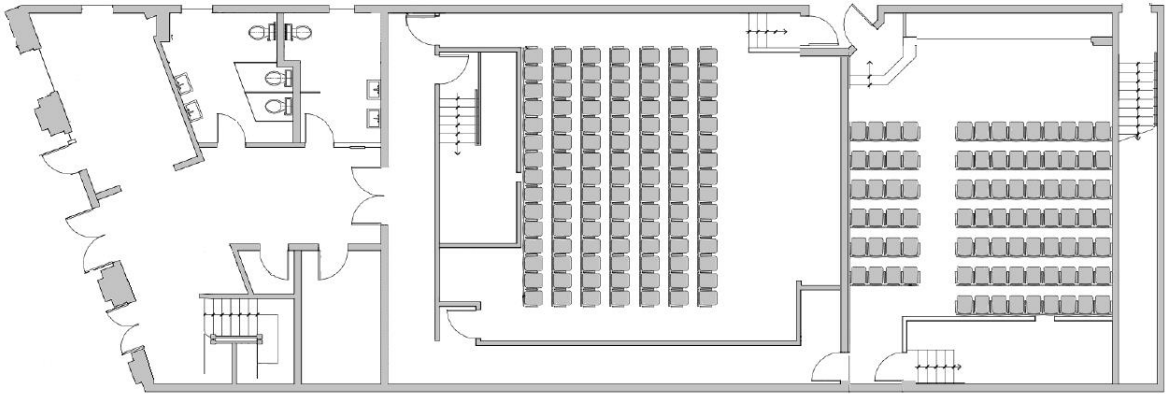
For Sale  
Columbia City Ark Lodge



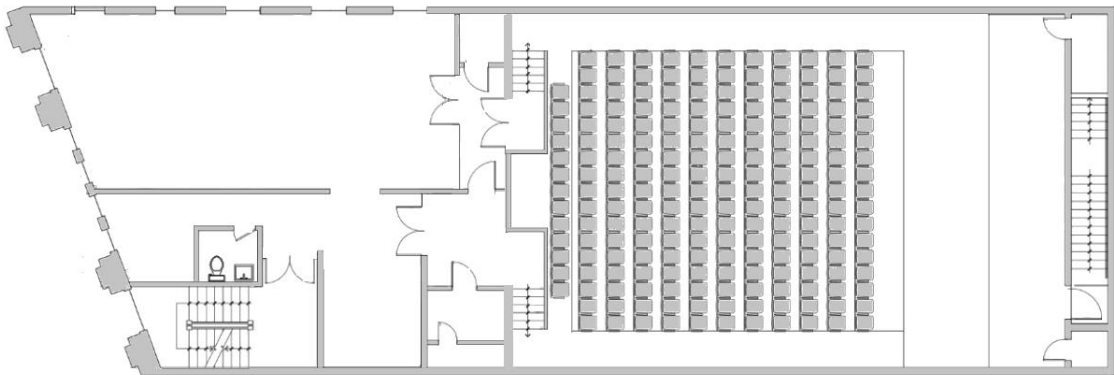
# Columbia City Ark Lodge

## Floorplans

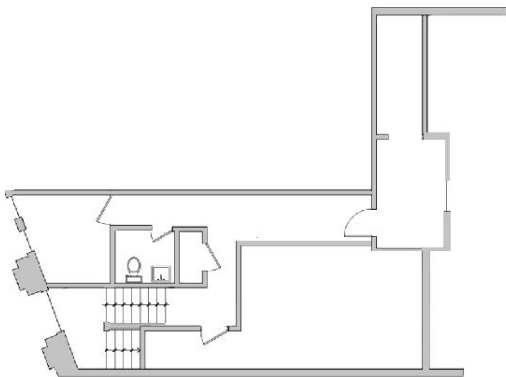
Floor 1



Floor 2



Floor 3



LGX Real Estate Associates

Hugh Winkill  
hwinkill@re-associates.com  
(206) 330-1794

Dean Anderson  
danderson@re-associates.com  
(206) 656-2353