



# FOR LEASE

720 Moorefield Park Drive  
Richmond, VA



Gareth Jones  
+1 804 200 6453  
[garetho.jones@jll.com](mailto:garetho.jones@jll.com)

Scott Harrison, SIOR  
+1 804 200 6435  
[scott.harrison@jll.com](mailto:scott.harrison@jll.com)

# PROPERTY HIGHLIGHTS

- > Three-story 47,250 s.f. Class A office building
  - > 1<sup>st</sup> floor, Suite 100: 2,556 SF
  - > 1<sup>st</sup> floor, Suite 105: 3,898 SF
  - > 1<sup>st</sup> floor, Suite 140: 2,072 SF
  - > 2<sup>nd</sup> floor, Suite 204: 1,221 SF
  - > 2<sup>nd</sup> floor, Suite 205: 1,620 SF
- > Ample parking (4/1,000)
- > Beautiful park & lake views surrounding building
- > Many amenities within close proximity
- > Excellent access off Midlothian Turnpike
- > 1 mile from Powhite Parkway



Lake views



# FLOOR PLAN | 1<sup>st</sup> FLOOR

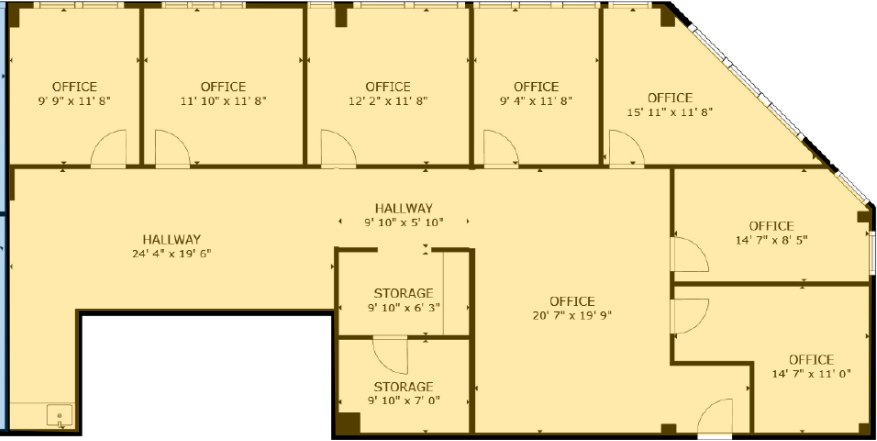
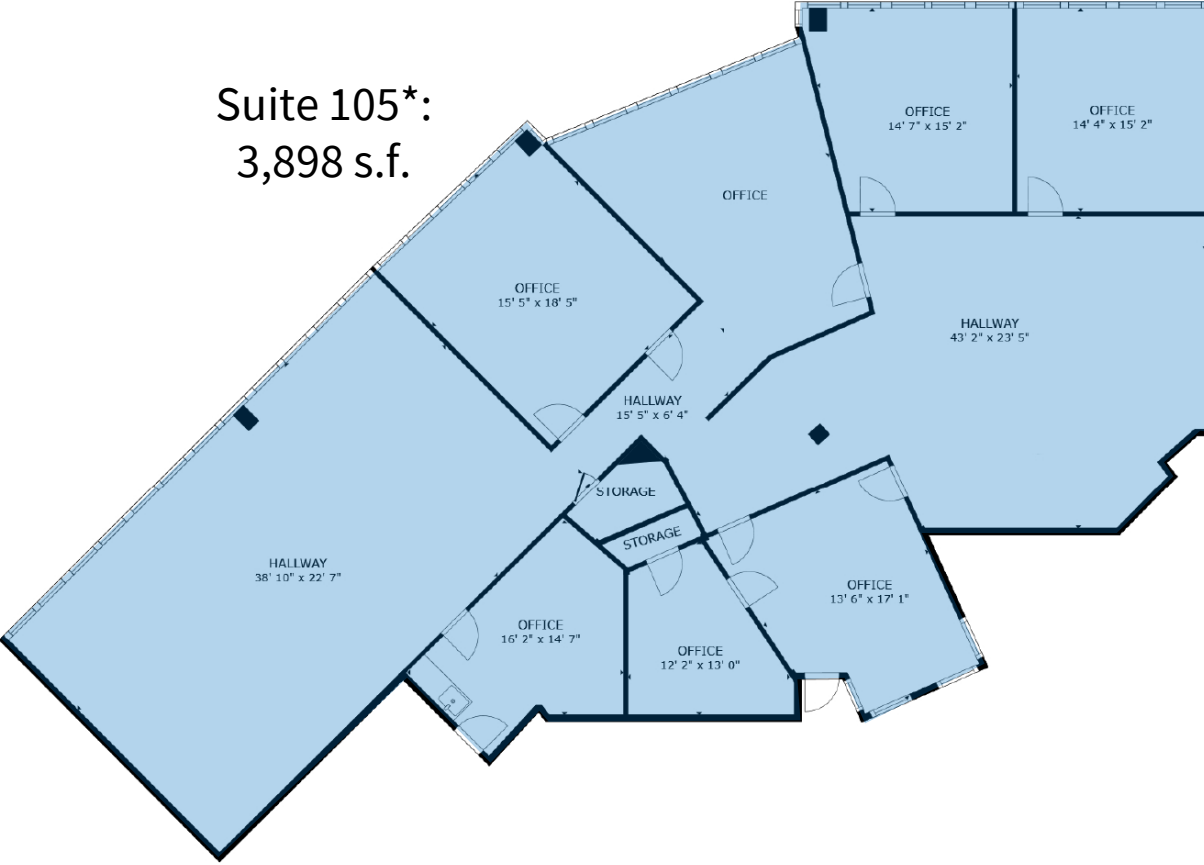


Suite 100:  
2,556 s.f.

[View virtual tour](#)

# FLOOR PLAN | 1<sup>st</sup> FLOOR

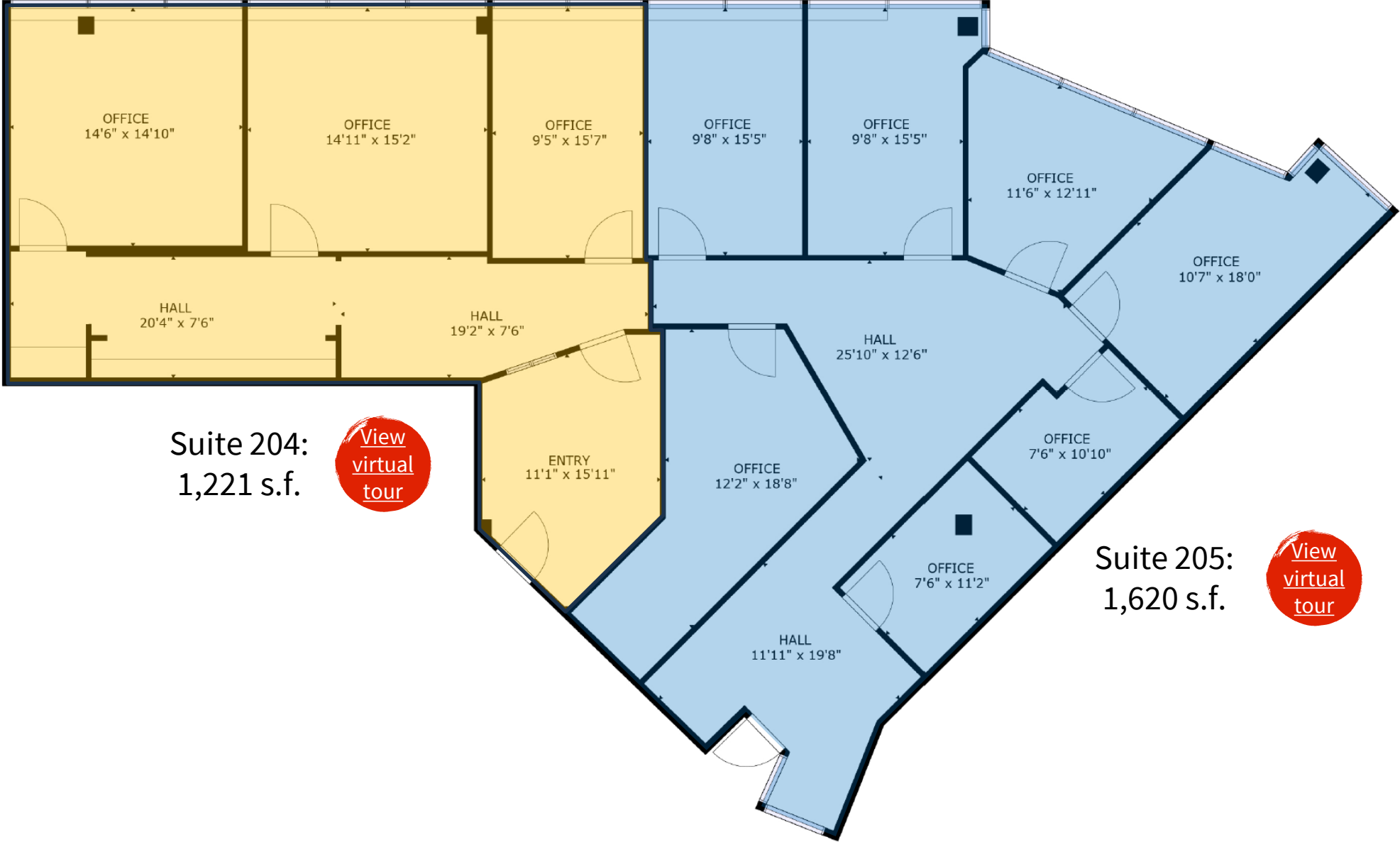
Suite 105\*:  
3,898 s.f.



Suite 140\*:  
2,072 s.f.

\*Suite 105/140 are contiguous for a total of 5,970 SF

# FLOOR PLAN | 2<sup>ND</sup> FLOOR



Suite 204:  
1,221 s.f.



Suite 205:  
1,620 s.f.



# Amenity map

## Food

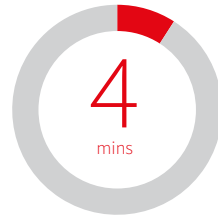
- |                            |                              |
|----------------------------|------------------------------|
| 1. Hiro Sushi              | 16. Chipotle                 |
| 2. Applebee's Grill        | 17. Carrabba's Italian Grill |
| 3. Viet Huong              | 18. Burger King              |
| 4. Taco Bell               | 19. Five Guys                |
| 5. Subway                  | 20. QDOBA                    |
| 6. Kickback Jack's         | 21. Jimmy John's             |
| 7. Arby's                  | 22. Bonchon                  |
| 8. Casa Grande             | 23. Panera Bread             |
| 9. Sonic                   | 24. Noodles and Co.          |
| 10. Hardee's               | 25. Tazza Kitchen            |
| 11. McDonald's             | 26. CAVA                     |
| 12. Starbucks              | 27. Mellow Mushroom          |
| 13. Wendy's                | 28. Texas Roadhouse          |
| 14. The Habit Burger Grill | 29. Chick-fil-A              |
| 15. Sweet Frog             |                              |

## Shopping

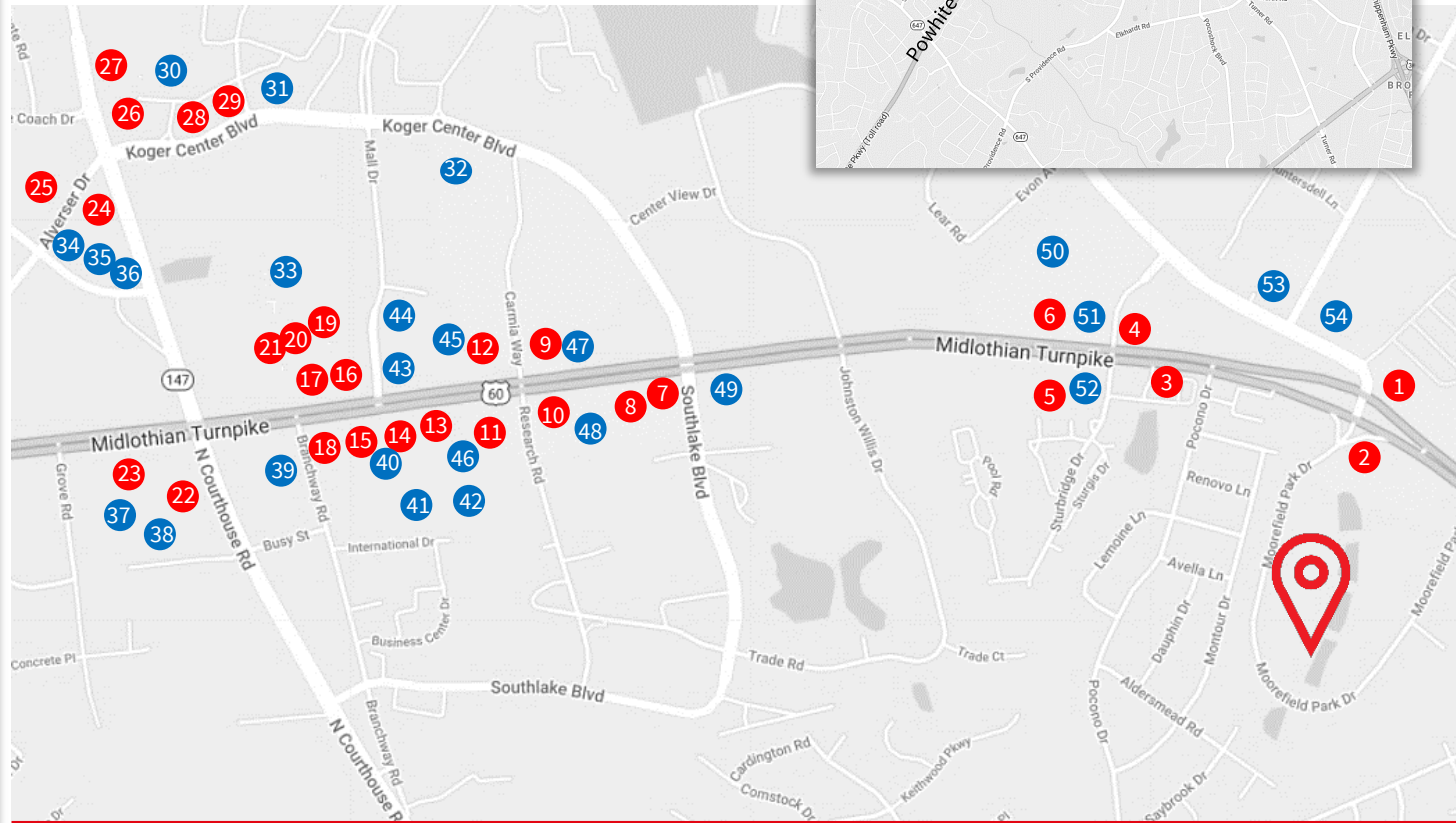
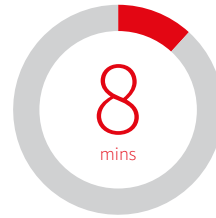
- |                               |                          |
|-------------------------------|--------------------------|
| 30. Geek Squad                | 43. First Community Bank |
| 31. BB&T                      | 44. USPS                 |
| 32. Home Depot                | 45. Ross                 |
| 33. Chesterfield Towne Center | 46. Pier 1               |
| 34. DSW                       | 47. Virginia ABC         |
| 35. Office Depot              | 48. Atlantic Union Bank  |
| 36. The Fresh Market          | 49. Wells Fargo          |
| 37. Advanced Auto Parts       | 50. Burlington           |
| 38. Bed Bath & Beyond         | 51. SunTrust             |
| 39. AutoZone                  | 52. O'Reilly Auto Parts  |
| 40. Verizon                   | 53. CVS                  |
| 41. Kohl's                    | 54. Total Wine & More    |
| 42. Target                    |                          |

# Traffic scores

Powwhite Pkwy



Chippenham Pkwy



**Gareth Jones**

+1 804 200 6453

[gareth.jones@jll.com](mailto:gareth.jones@jll.com)

**Scott Harrison, SIOR**

+1 804 200 6435

[scott.harrison@jll.com](mailto:scott.harrison@jll.com)

Although information has been obtained from sources deemed reliable, JLL does not make any guarantees, warranties or representations, express or implied, as to the completeness or accuracy as to the information contained herein. Any projections, opinions, assumptions or estimates used are for example only. There may be differences between projected and actual results, and those differences may be material. JLL does not accept any liability for any loss or damage suffered by any party resulting from reliance on this information. If the recipient of this information has signed a confidentiality agreement with JLL regarding this matter, this information is subject to the terms of that agreement. ©2024. Jones Lang LaSalle IP, Inc. All rights reserved.

