

PRIME NEW RETAIL SPACE 3831 GEORGIA AVE, NW



Corner Location in Busy Petworth, Across from Safeway and many new apartment developments, 1 block from Georgia Ave- Petworth Metro Station.

Size: 1,392 SF Retail space with exterior patio (645 SF)

Base Rent: \$5,000 NNN (NNN approximately \$1,100/month)

Delivery Condition: Landlord to deliver in Warm Lit Shell Condition

Possession: Upon Substantial Completion



Hannah Traul 703-304-4343

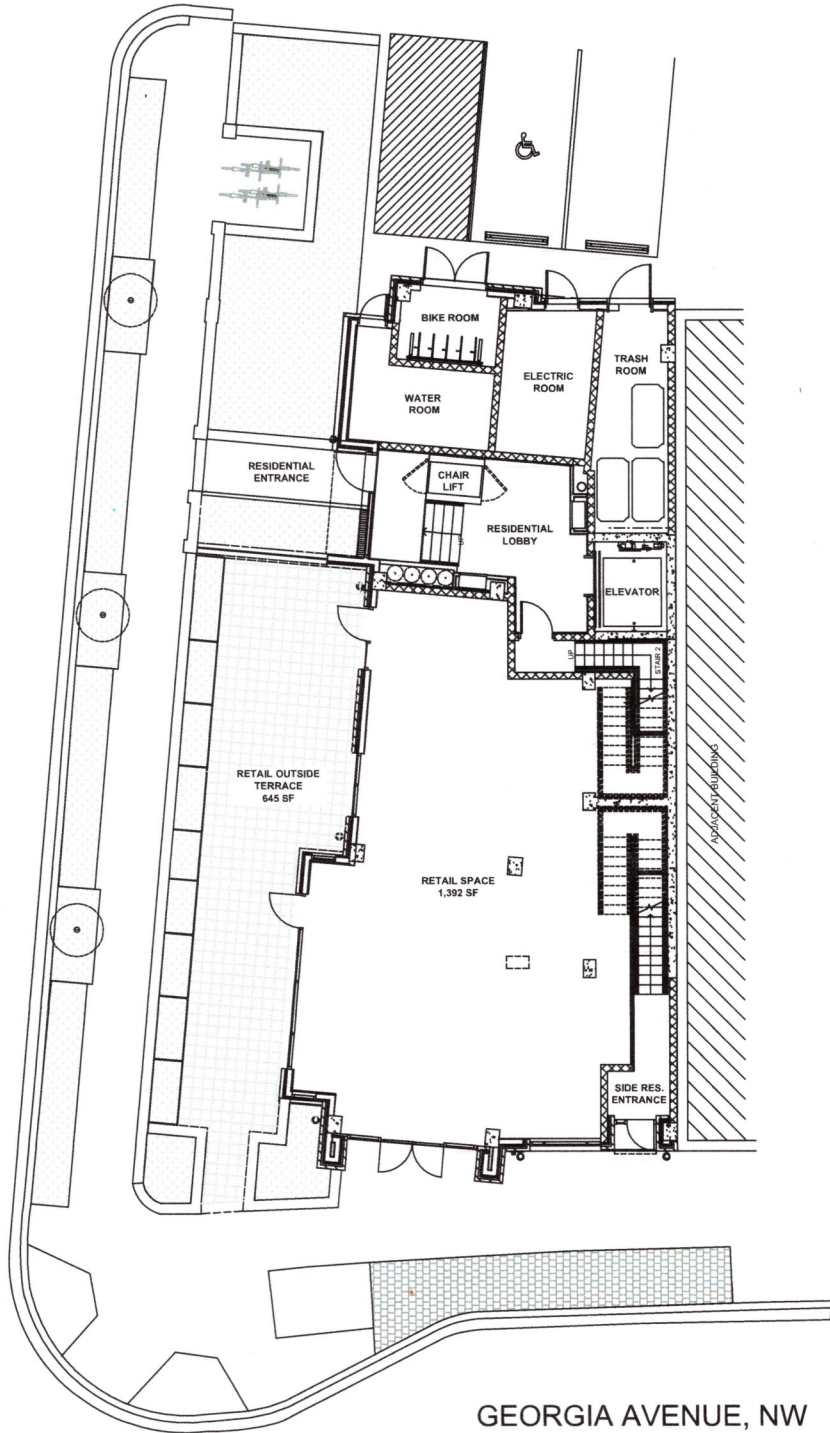
Jackson Prentice 202-841-8700

www.JACKSONPRENTICE.com

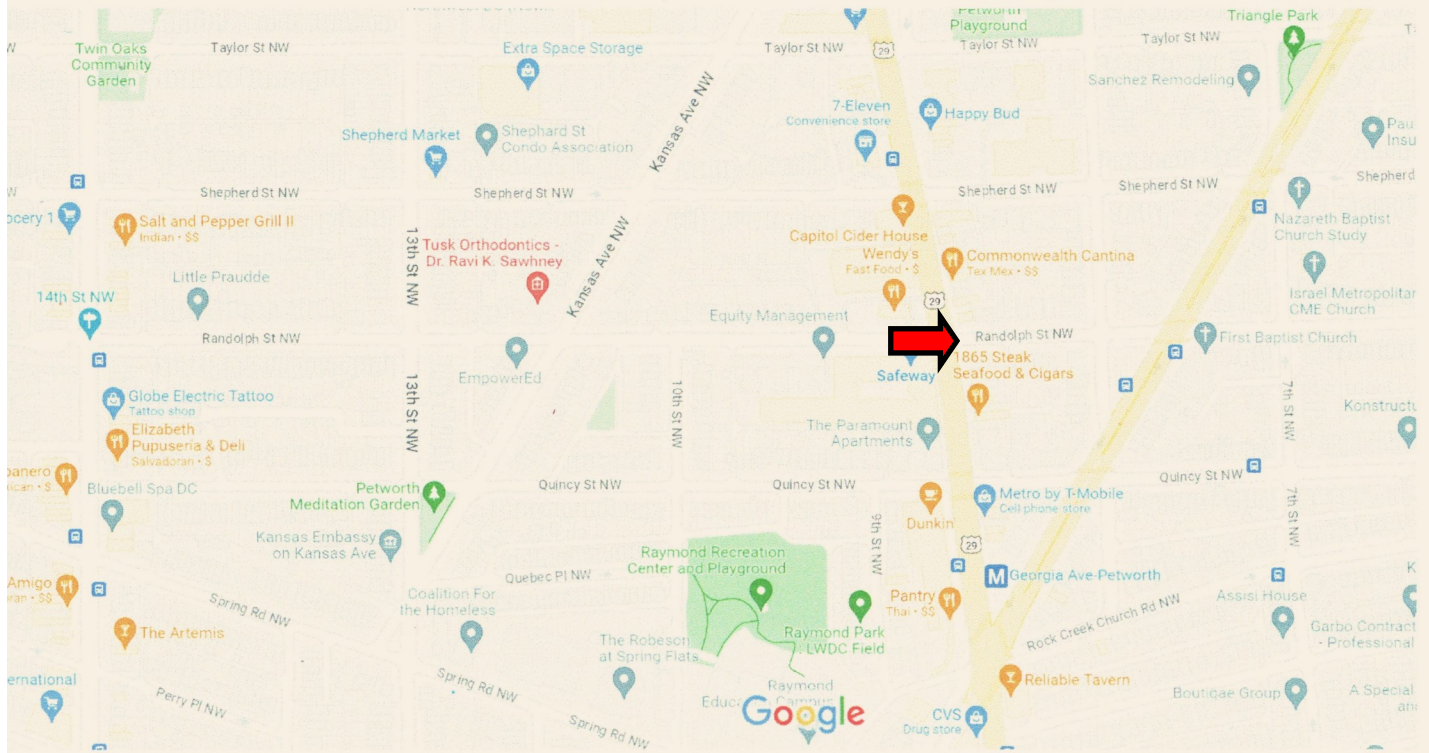


3831 GEORGIA AVE SE - WASHINGTON, DC

RANDOLPH STREET, NW



DEVELOPER RESERVES THE RIGHT TO ADJUST ELEVATIONS AND FLOOR PLANS AND MAKE CHANGES TO THE FEATURES AND SPECIFICATIONS AT ANY TIME. ALL DIMENSIONS ARE APPROXIMATE.



Map data ©2023 Google 200 ft

