



FOR LEASE

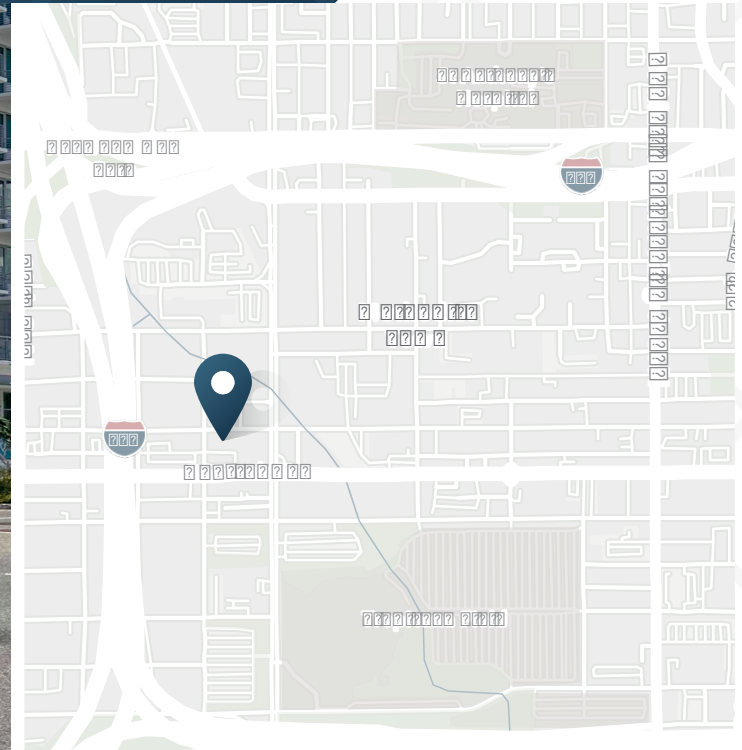
Retail Spaces Available at Vantage St. Pete

160 16th St. N | St. Petersburg, FL



Retail Spaces Available at Vantage St. Pete

160 16th St. N | St. Petersburg, FL



550 - 2,590 SF

Available

5,686 SF

GLA

Contact
Broker

Rate

ABOUT THE PROPERTY

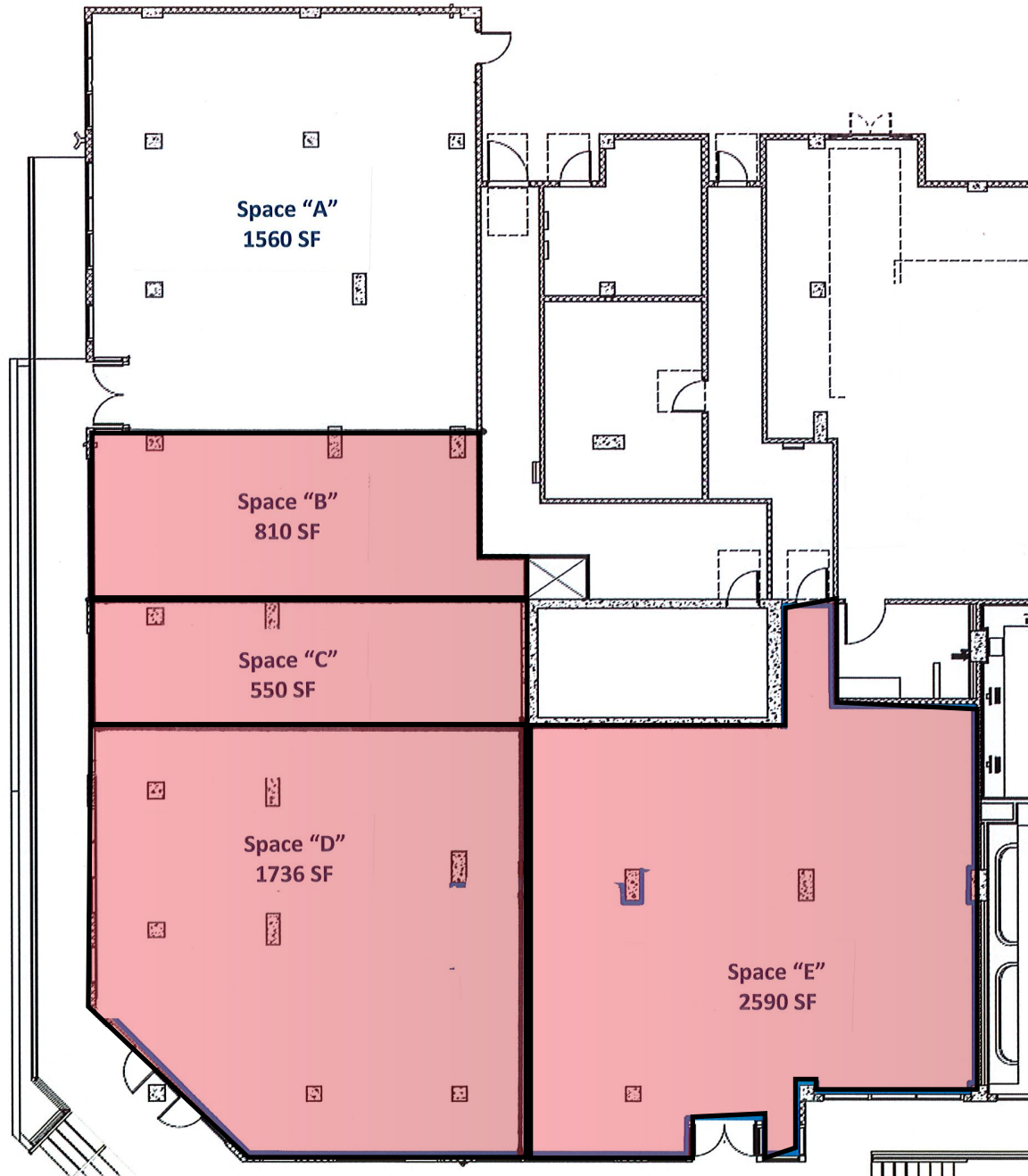
- Street-level corner-unit retail of the Vantage building in downtown St. Petersburg.
- Dynamic location prominently positioned at the intersection of 1st Ave North and 16th Street North.
- Less than ½ mile from the Tropicana Field “Gas Plant District” redevelopment.
- Property is located in Grand Central, bordering The Edge, Central Arts, and Gas Plant Districts.
- St. Petersburg has been named one of the Top Cities to Visit by Conde Nast Traveler and Forbes Magazine.
- Downtown St. Pete is internationally renowned for its art scene; it is home to the Salvador Dali Museum, Museum of Fine Arts, James Museum of Western & Wildlife Art, the Morean Art Center, and the Chihuly Collection.

NEARBY RESTAURANTS & BARS



Retail Spaces Available at Vantage St. Pete

160 16th St. N | St. Petersburg, FL

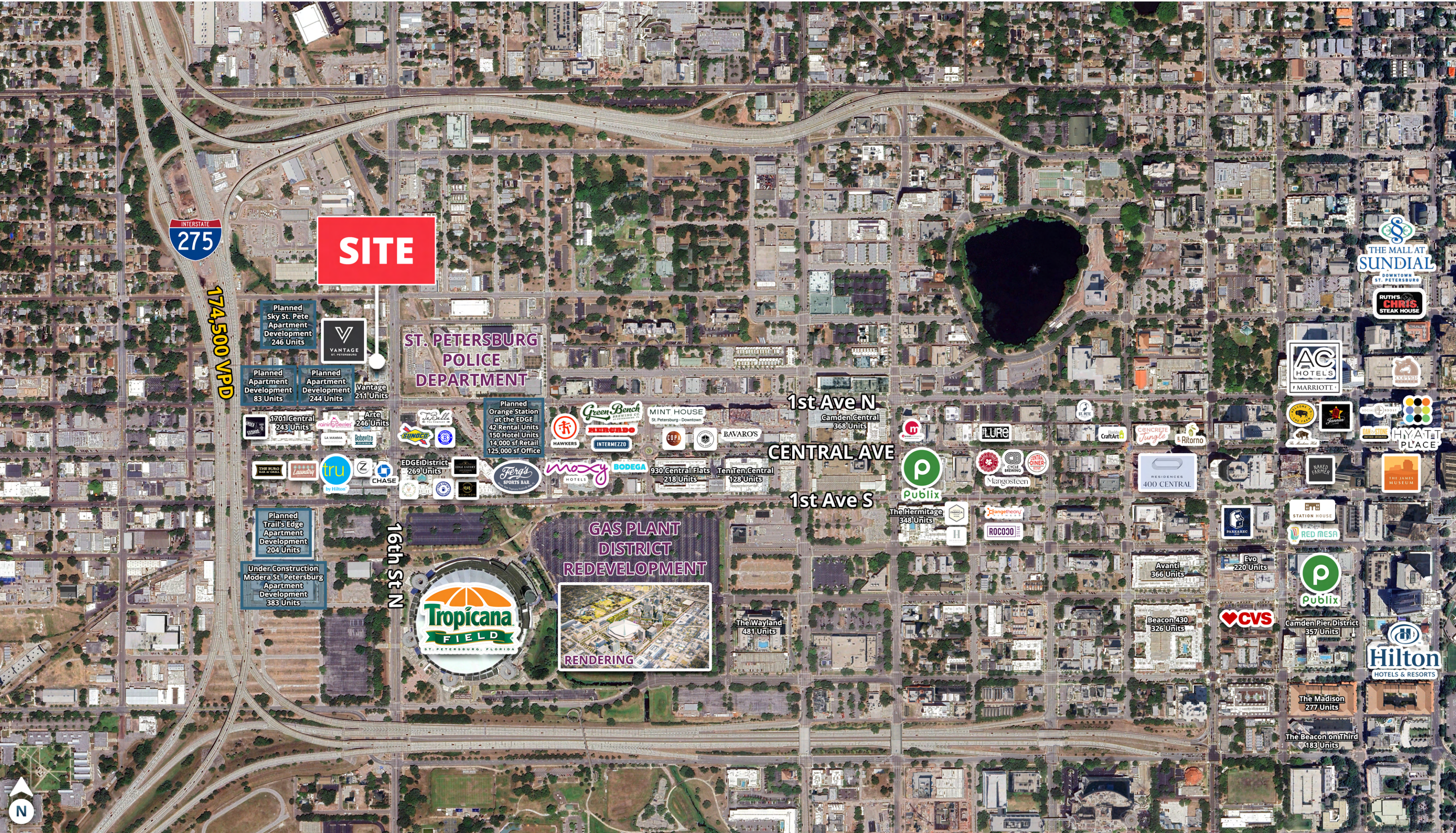


AVAILABLE SPACES:

- SPACE B - 810 SF
- SPACE C - 550 SF
- SPACE D - 1,736 SF
- SPACE E - 3,590 SF
- **COMBINED UNITS = 5,686 SF**

Vantage St. Pete Retail

160 16th St. N | St. Petersburg, FL



SITE

INTERSTATE
275
174,500 VPD

Planned Sky St. Pete Apartment Development
246 Units

Planned Apartment Development
83 Units



ST. PETERSBURG POLICE DEPARTMENT

1701 Central
243 Units

Arte
246 Units

Planned Orange Station at the EDGE
42 Rental Units
150 Hotel Units
14,000 sf Retail
125,000 sf Office

1st Ave N
Camden Central
368 Units

CENTRAL AVE

1st Ave S

Planned Trail's Edge Apartment Development
204 Units

Under Construction Modera St. Petersburg Apartment Development
383 Units

16th St N



GAS PLANT DISTRICT REDEVELOPMENT



The Wayland
481 Units

Avanti
366 Units

Beacon 430
326 Units

CVS

Camden Pier District
357 Units

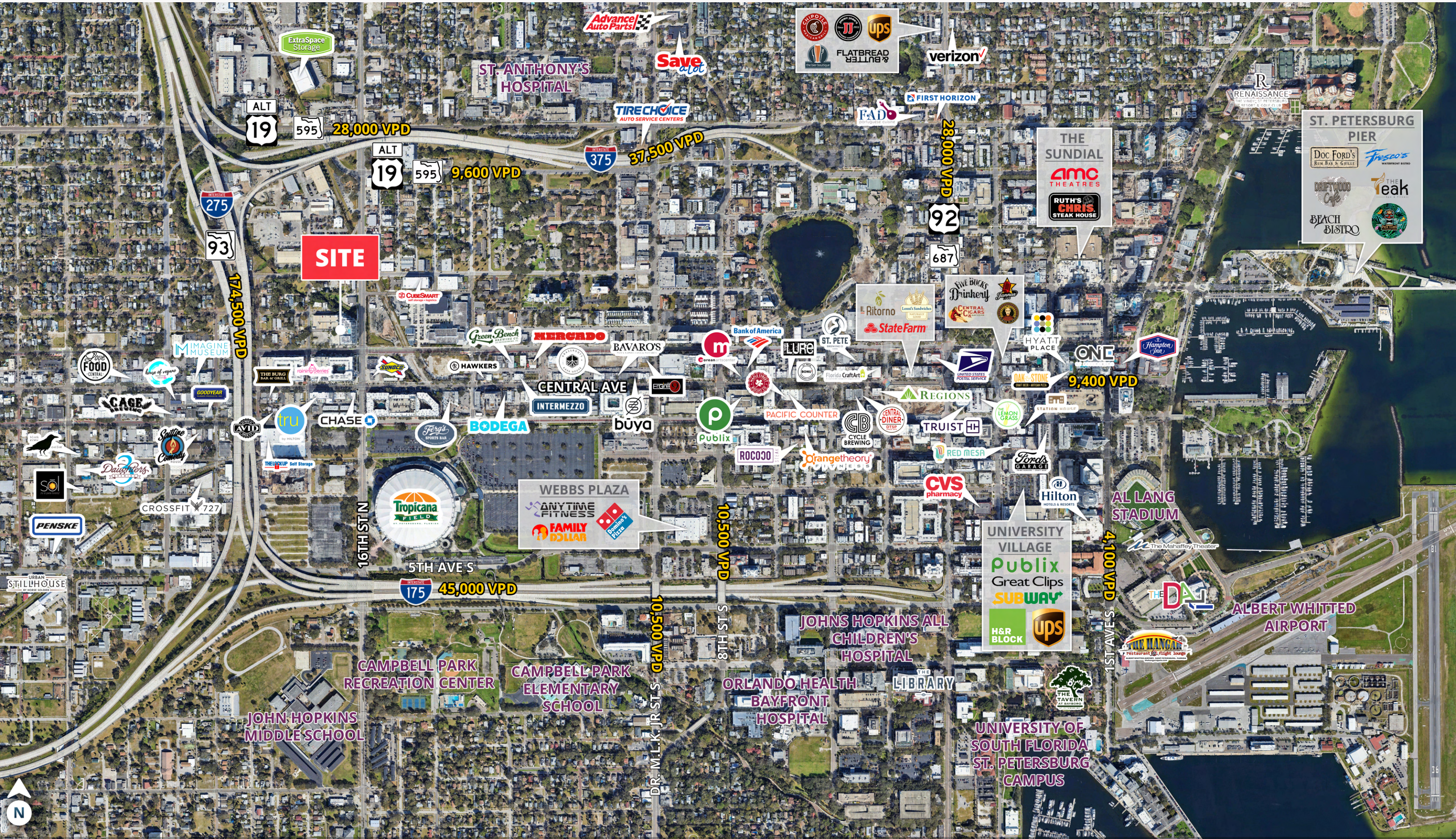
Hilton
HOTELS & RESORTS

The Madison
277 Units

The Beacon on Third
483 Units

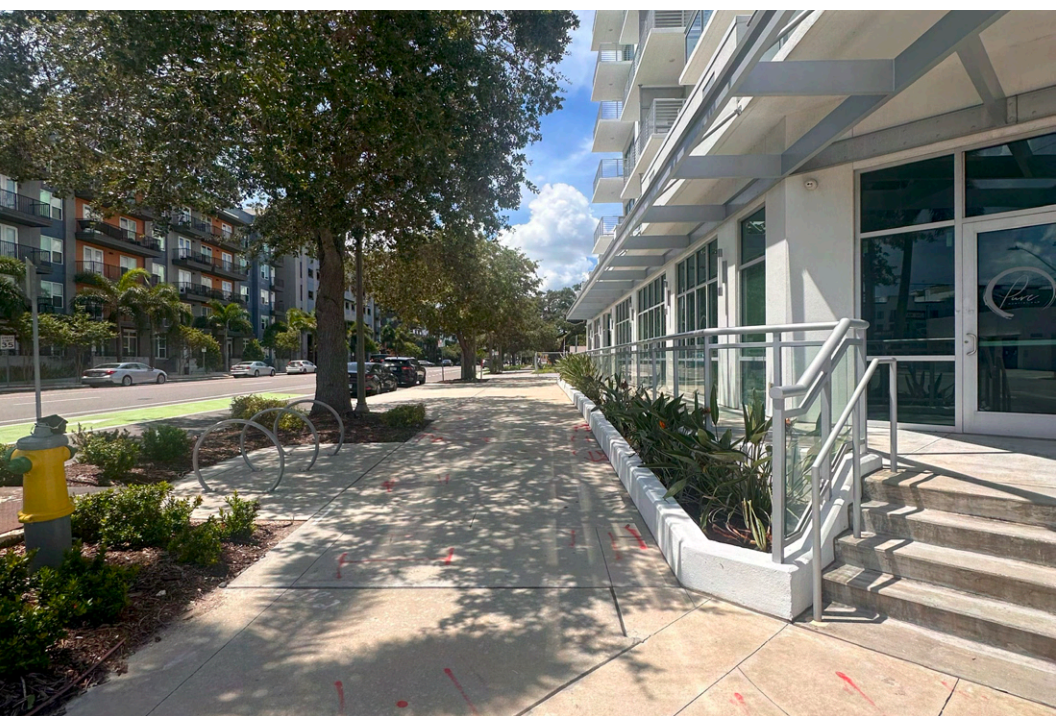
Trade Area

160 16th St. N | St. Petersburg, FL



Retail Spaces Available at Vantage St. Pete

160 16th St. N | St. Petersburg, FL



Retail Spaces Available at Vantage St. Pete

160 16th St. N | St. Petersburg, FL



DEMOGRAPHIC HIGHLIGHTS

1 MILE

| | | | |
|----------------------|---------------------------------------|-----------------------------------------|------------------------------|
| 16,782 Population | 28,503 Total Daytime Population | \$90,305 Average Household Income | 9,289 Total Households |
|----------------------|---------------------------------------|-----------------------------------------|------------------------------|

3 MILES

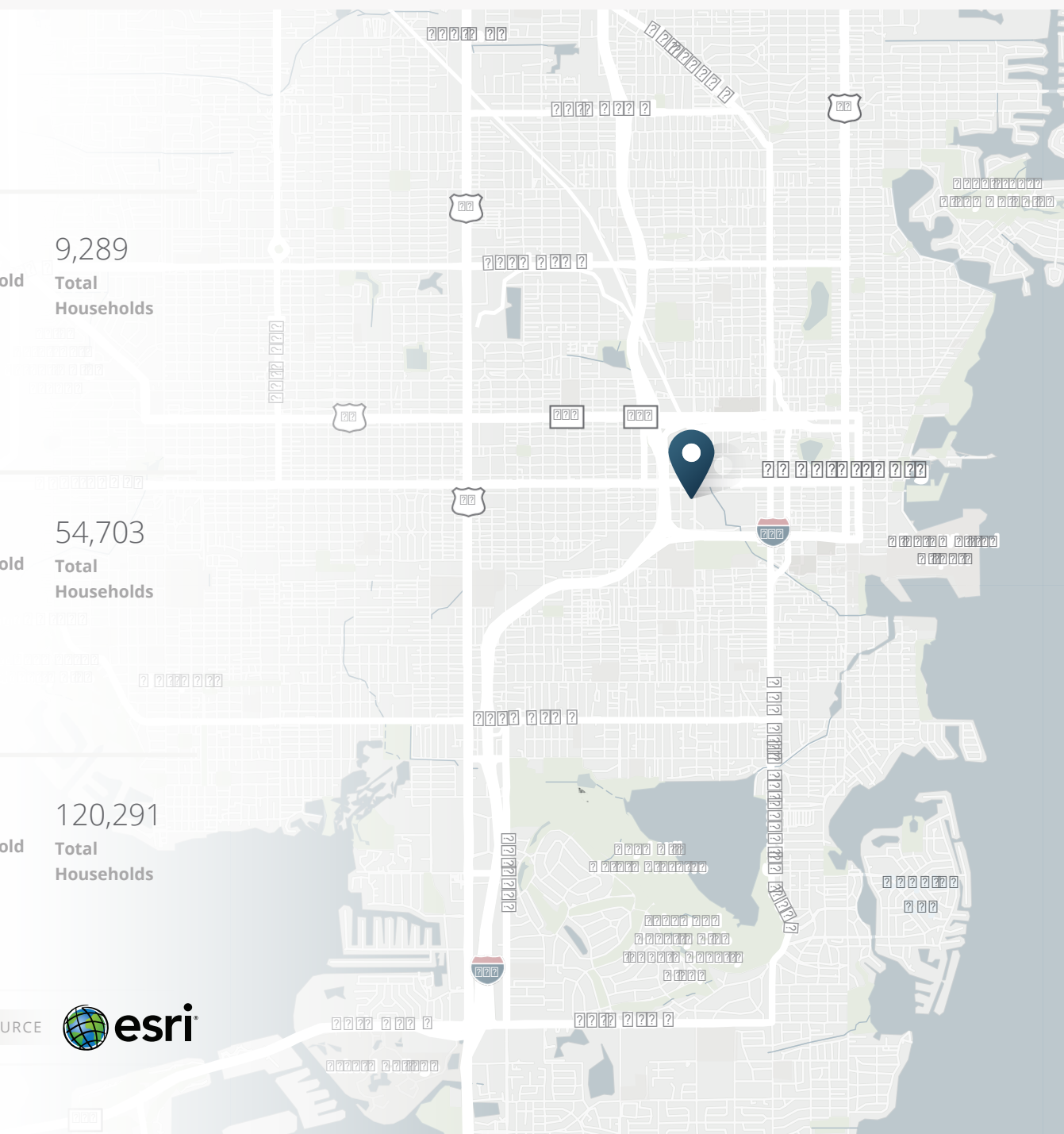
| | | | |
|-----------------------|----------------------------------------|------------------------------------------|-------------------------------|
| 115,989 Population | 128,813 Total Daytime Population | \$104,903 Average Household Income | 54,703 Total Households |
|-----------------------|----------------------------------------|------------------------------------------|-------------------------------|

5 MILES

| | | | |
|-----------------------|----------------------------------------|------------------------------------------|--------------------------------|
| 259,278 Population | 244,359 Total Daytime Population | \$106,295 Average Household Income | 120,291 Total Households |
|-----------------------|----------------------------------------|------------------------------------------|--------------------------------|

> **Want more?** Contact us for a complete demographic, foot-traffic, and mobile data insights report.

SOURCE 





SRS Real Estate Partners

1501 W. Cleveland St, Suite 300
Tampa, FL 33606
813.371.0980

Daniel Earles

813.424.2500
daniel.earles@srsre.com

Mark Sneed

813.371.1080
mark.sneed@srsre.com

SRSRE.COM

© SRS Real Estate Partners

The information presented was obtained from sources deemed reliable;
however SRS Real Estate Partners does not guarantee its completeness or accuracy.