



FOR SUBLEASE

Santa Fe Medical Plaza

9755 N 90th St, Scottsdale, AZ 85258



Jones Lang LaSalle Americas, Inc. | AZ License #CO508577000

The Property

Overview

AVAILABILITIES

- Suite A100/A105*
- *Built out medical with high-end finishes in 2019*

BUILDING SF

25,241 SF

RENTABLE SF

- Suite A100/A105 4,250 SF

RENT RATE

please call

PARKING

7 Reserved Covered

TERM EXPIRATION

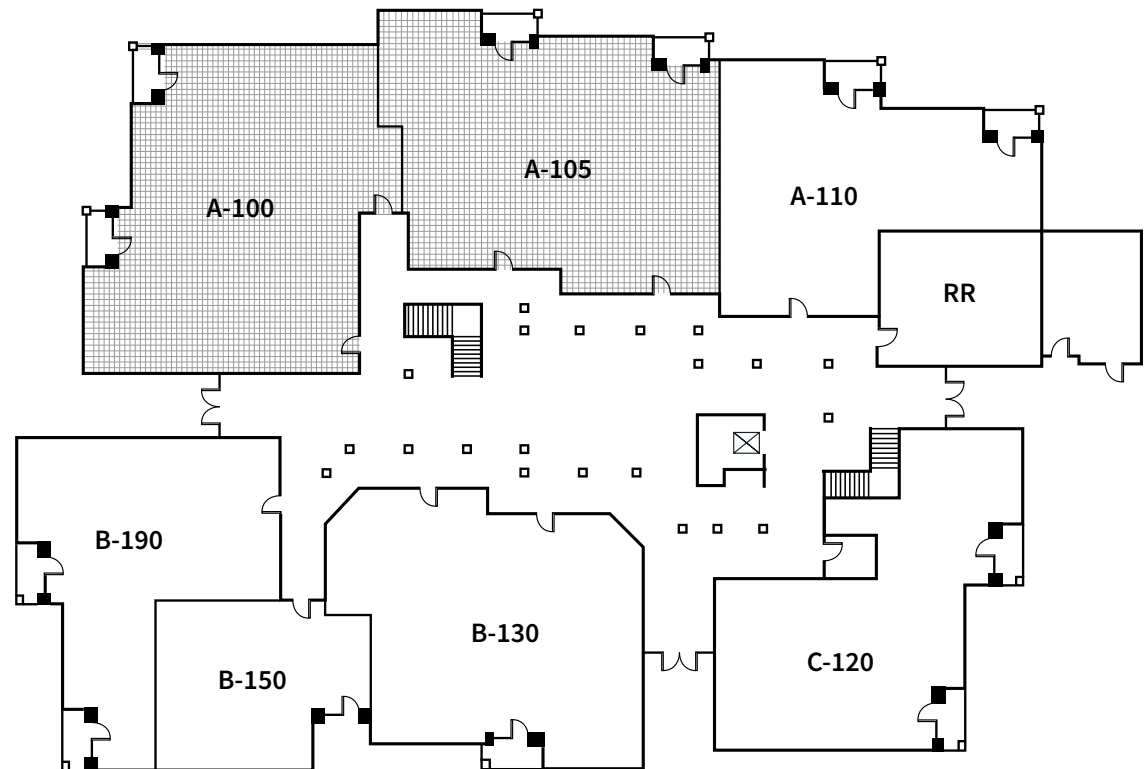
February 29, 2028

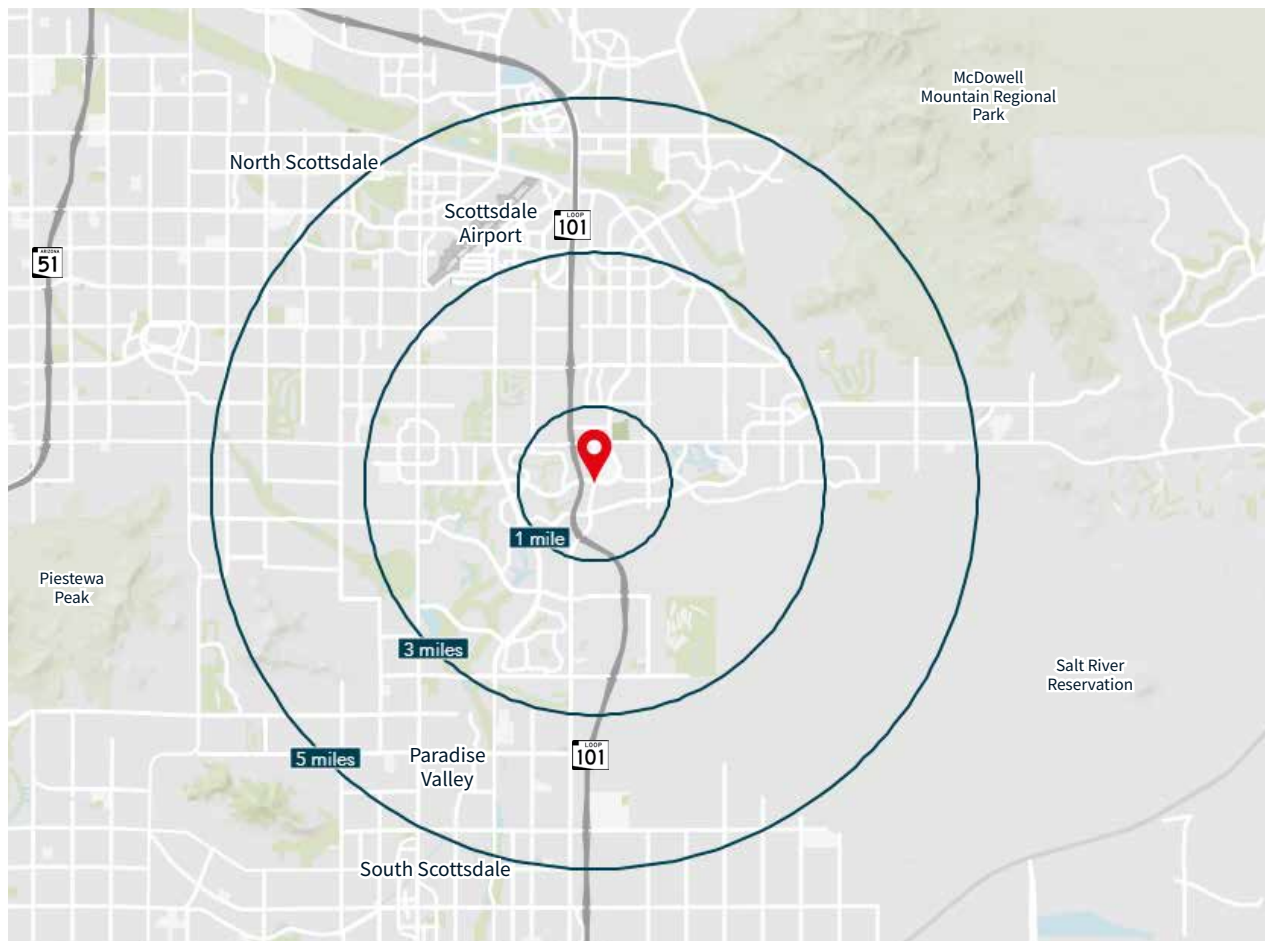
RENEWAL TERM

One (1) additional five (5) year term

ADDITIONAL INFO

- Excellent Medical and/or General Office Space
- Primary Care anchored
- 0.5 mile from HonorHealth Scottsdale Shea Medical Center





KEY DISTANCES

HonorHealth Shea Medical Center	0.5 miles
HonorHealth Scottsdale Thompson Peak	8.5 miles
Banner Health Scottsdale	11.8 miles
Abrazo Scottsdale Campus	14 miles
Loop 101 Freeway	0.5 mile
State Route 51 Freeway	8.2 miles
Loop 202 Freeway	10.3 miles
I-10 Freeway	20 miles
I-17 Freeway	25 miles



THANK YOU

FOR MORE INFORMATION:



Katie McIntyre

Executive Vice President, Healthcare

T +1 602 282 6357

M +1 602 538 3855

katie.mcintyre@jll.com



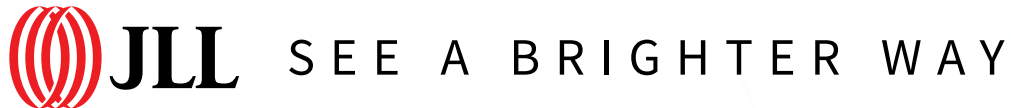
Mari Lederman

Executive Vice President, Healthcare

T +1 602 282 6325

M +1 602 705 8870

mari.lederman@jll.com



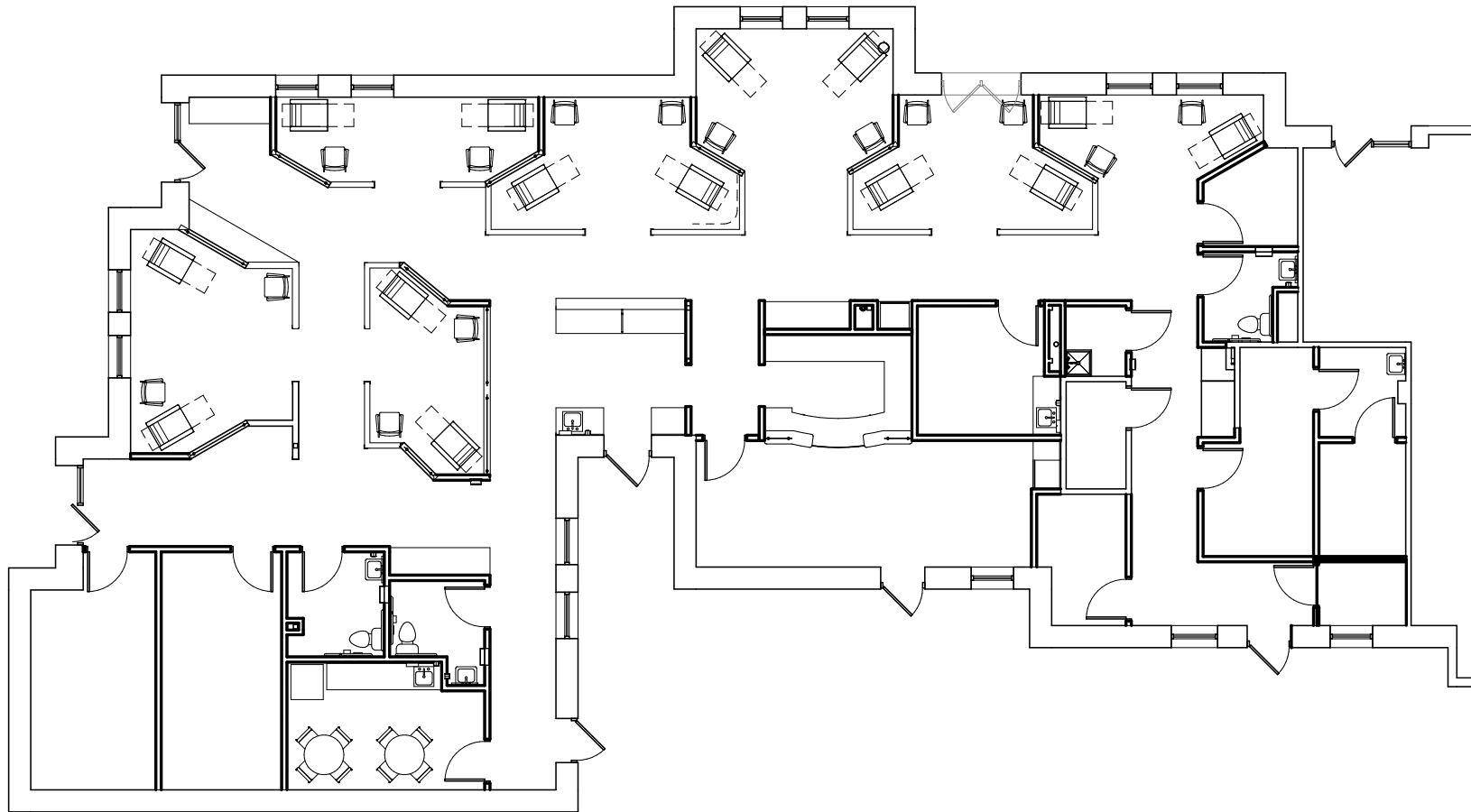
SEE A BRIGHTER WAY

Although information has been obtained from sources deemed reliable, neither Owner nor JLL makes any guarantees, warranties or representations, express or implied, as to the completeness or accuracy as to the information contained herein. Any projections, opinions, assumptions or estimates used are for example only. There may be differences between projected and actual results, and those differences may be material. The Property may be withdrawn without notice. Neither Owner nor JLL accepts any liability for any loss or damage suffered by any party resulting from reliance on this information. If the recipient of this information has signed a confidentiality agreement regarding this matter, this information is subject to the terms of that agreement. © 2025 Jones Lang LaSalle IP, Inc. All rights reserved.

Floor Plan - Bulding A

Santa Fe Medical Plaza
9755 N 90th St, Scottsdale, AZ 85258

Built-out medical with high-end finishes in 2019
Suite A100/A105: 4,250 SF



Katie McIntyre
Senior Vice President
T +1 602 282 6357
M +1 602 538 3855
katie.mcintyre@jll.com

Mari Lederman
Senior Vice President
T +1 602 282 6325
M +1 602 705 8870
mari.lederman@jll.com