

THE LOFTS AT 655 SIXTH
RETAIL

FOR LEASE | 8,265 SF
675 6TH AVENUE
SAN DIEGO, CA 92101



**FLOCKE &
AVOYER**

Commercial Real Estate

THE OPPORTUNITY

FOR LEASE: ±8,265 SF

- Situated along 6th Avenue between Market Street and G Street.
- At the base of The Lofts at 655 Sixth with 106 residential units.
- Up to ±20 foot ceiling heights.
- ±80 ft of frontage on 6th Avenue.
- Co-tenancy with Double Standard.
- Available: 05/01/19
- Area tenants include: Fogo de Chao, Urban Outfitters, Breakfast Republic, Neighborhood, CVS, Coin-Op, Side Bar and more.
- Adjacent to Park it on Market, a 500 stall public parking garage.

6165 Greenwich Drive, Suite 110 • San Diego, CA, 92122 • 619.280.2600
www.flockeavoyer.com • *Disclaimers



*DO NOT DISTURB CURRENT TENANT.

FOR LEASING INFORMATION:

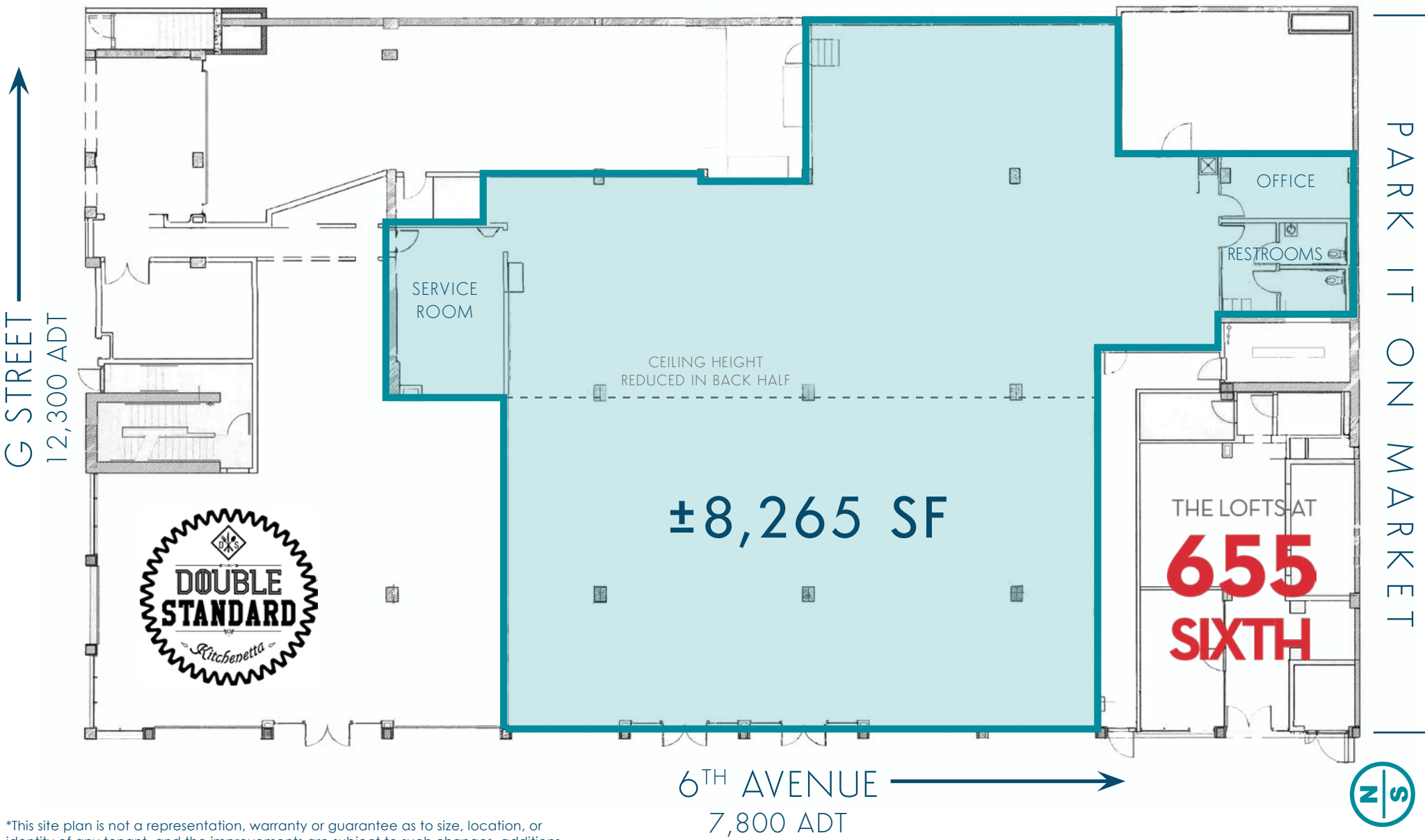


MICHAEL BURTON
858.875.4685
mburton@flockeavoyer.com
License ID: 01763327

PASQUALE IOELE
858.875.4665
pioele@flockeavoyer.com
License ID: 01488187

ALEX DRECKSEL
858.875.4690
adrecksel@flockeavoyer.com
License ID: 01988954

SITE PLAN



*This site plan is not a representation, warranty or guarantee as to size, location, or identity of any tenant, and the improvements are subject to such changes, additions, and deletions as the architect, landlord, or any governmental agency may direct.



*DO NOT DISTURB CURRENT TENANT.

Over...

1,890 HOTEL ROOMS within 4 blocks.

1.45 MILLION SF OF OFFICE within 6 blocks.

1,340 RESIDENTIAL UNITS within 3 blocks.

Demographics

38,039

Total population of
Downtown San Diego

81,237

Total jobs located
downtown

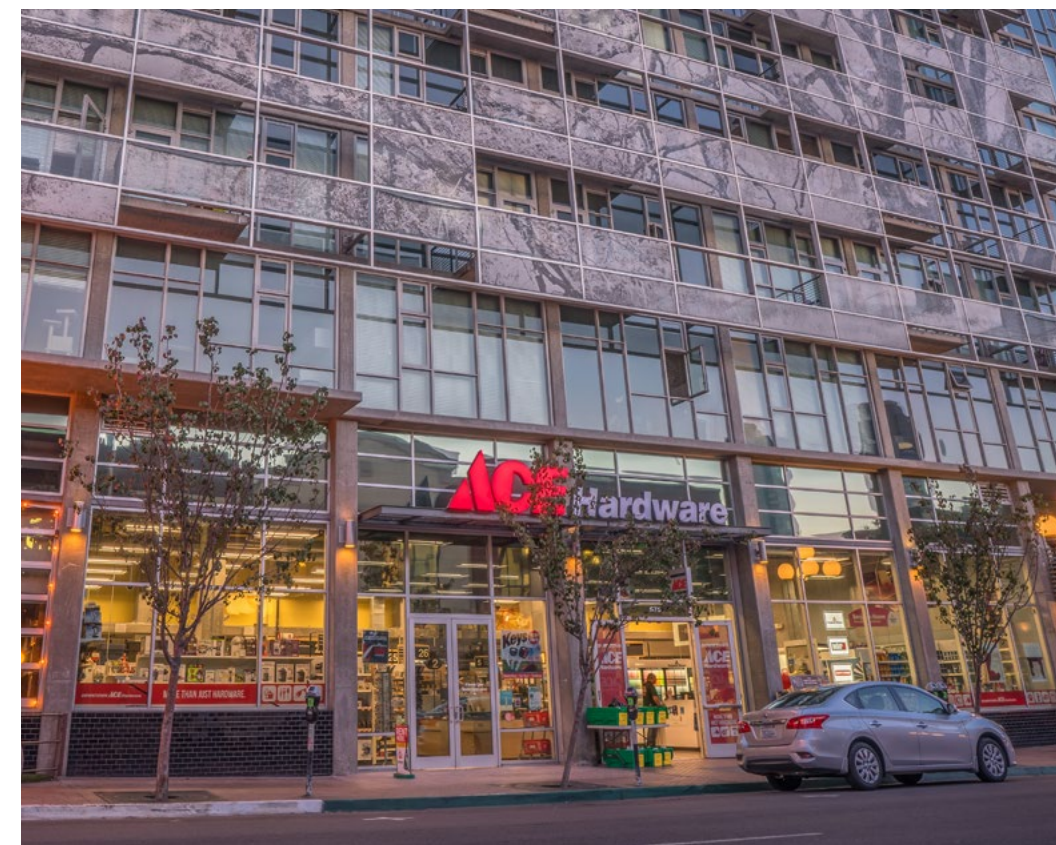
34.9M

Visitors to San Diego



LOCATION HIGHLIGHTS

- Ideally situated at the convergence of San Diego's bustling East Village and the historic Gaslamp Quarter; with over 10 million annual visitors.
- Close proximity to Petco Park, the Convention Center and Horton Plaza Park.
- Easy access to the 5, 94 & 163 freeways.
- 3 parking structures and multiple surface lots within 3 blocks.

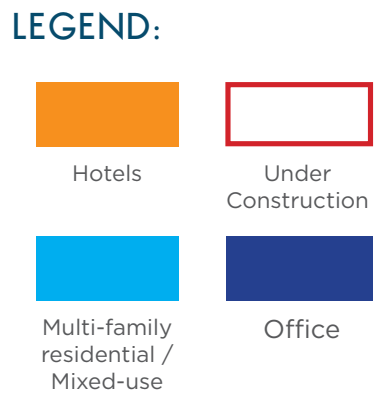


*Demographics produced using private and government sources deemed to be reliable. The information herein is provided without representation or warranty. Additional information available upon request.

AREA TENANTS



AERIAL USE MAP



*All information regarding this property is deemed to be reliable, however, no representation, guarantee or warranty is made to the accuracy thereof and is submitted subject to errors, omissions, change of price rental, or withdrawal without notice.



URBAN STRATEGIES GROUP
FLOCKE & AVOYER COMMERCIAL REAL ESTATE



@urban_strategies_group



@USG_SanDiego

MICHAEL BURTON

858.875.4685

mburton@flockeavoyer.com

License ID: 01763327

PASQUALE IOELE

858.875.4665

pioele@flockeavoyer.com

License ID: 01488187

ALEX DRECKSEL

858.875.4690

adrecksel@flockeavoyer.com

License ID: 01988954

