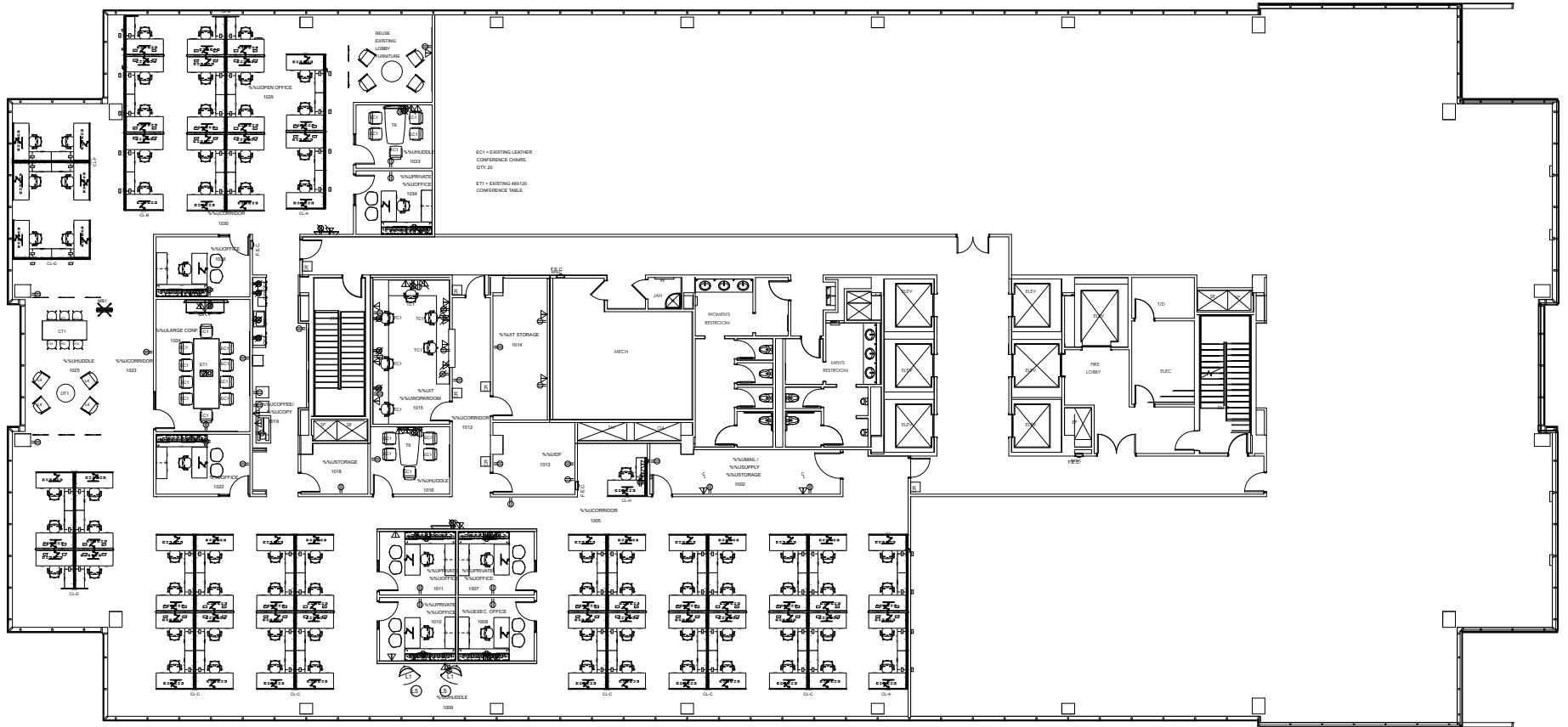


# HALL PARK

3201 DALLAS PARKWAY,  
FRISCO TX 75034

FOR SUBLEASE 12,440 RSF

# FLOOR PLAN



RATES		
<b>\$29.00</b>	<b>\$15.06</b>	<b>\$1.35</b>
NNN	Opex	Electric

PARKING	TERM
<b>5/1000</b>	<b>01/2030</b>
Parking per RSF	Term Expiration

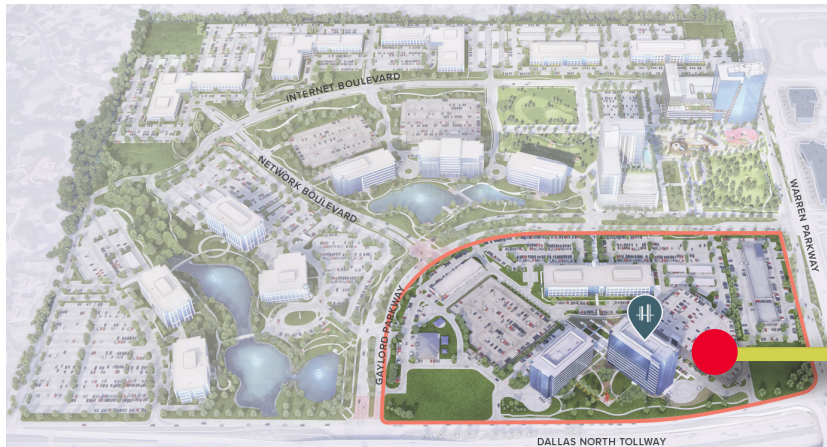
# PROPERTY PHOTOS



# AMENITIES MAP

## THE BUILDING

- Twelve Stories, 300,000 RSF Total
- 26,000 RSF Typical Floor Plate
- \$36-\$37.00 per RSF NNN plus Electricity
- 2024 Estimates: NNNs = \$15.06 / Electricity = \$1.35
- Covered Parking in Structured Garage at \$50.00 per Space per Month



## HALL PARK AMENITIES

Greenscape and Lakes  
200 Works of Art  
Walking Trails & Bike Share Program  
Fitness Center  
Multiple Conference Centers  
Outdoor Meeting and Work Spaces  
On-site Casual Dining

**COMING SOON**  
16-Story Office Tower  
Programmed Community Park  
224-Room Boutique Hotel  
214 Luxury Apartments  
10,000 SF Eatery  
Additional Retail





## CONTACT

### DEAN COLLINS

Executive Managing Director, Tenant Advisory Group  
Direct: +1 972 663 9908  
dean.collins@cushwake.com

### MARK COLLINS

Executive Managing Director  
Office: +1 972 663 9706  
mark.collins@cushwake.com



©2024 Cushman & Wakefield. All rights reserved. The material in this presentation has been prepared solely for information purposes, and is strictly confidential. Any disclosure, use, copying or circulation of this presentation (or the information contained within it) is strictly prohibited, unless you have obtained Cushman & Wakefield's prior written consent. The views expressed in this presentation are the views of the author and do not necessarily reflect the views of Cushman & Wakefield. Neither this presentation nor any part of it shall form the basis of, or be relied upon in connection with any offer, or act as an inducement to enter into any contract or commitment whatsoever. NO REPRESENTATION OR WARRANTY IS GIVEN, EXPRESS OR IMPLIED, AS TO THE ACCURACY OF THE INFORMATION CONTAINED WITHIN THIS PRESENTATION, AND CUSHMAN & WAKEFIELD IS UNDER NO OBLIGATION TO SUBSEQUENTLY CORRECT IT IN THE EVENT OF ERRORS.