

BANNEKER BUILDING

5840 Banneker Road, Columbia, Maryland
Howard County



FOR LEASE

AVAILABLE SUITES

- **Suite 120A:** 3,000 SF
- **Suite 200:** 2,582 SF
- **Suite 230:** 3,605 SF
- **Suite 250:** 675 SF
- **Suite 270:** 1,465 SF

- **Conveniently located near Downtown Columbia**
- Easy access to I-95, Route 29, and Route 32
- Blocks away from Columbia Mall, Howard Community College and Howard County General Hospital
- Great window lines
- Flexible lease terms
- Free surface parking

NEARBY AMENITIES



WELLS FARGO



Abby Glassberg
aglassberg@klnb.com
443-574-1422

Steele Stanwick
sstanwick@klnb.com
443-574-1420

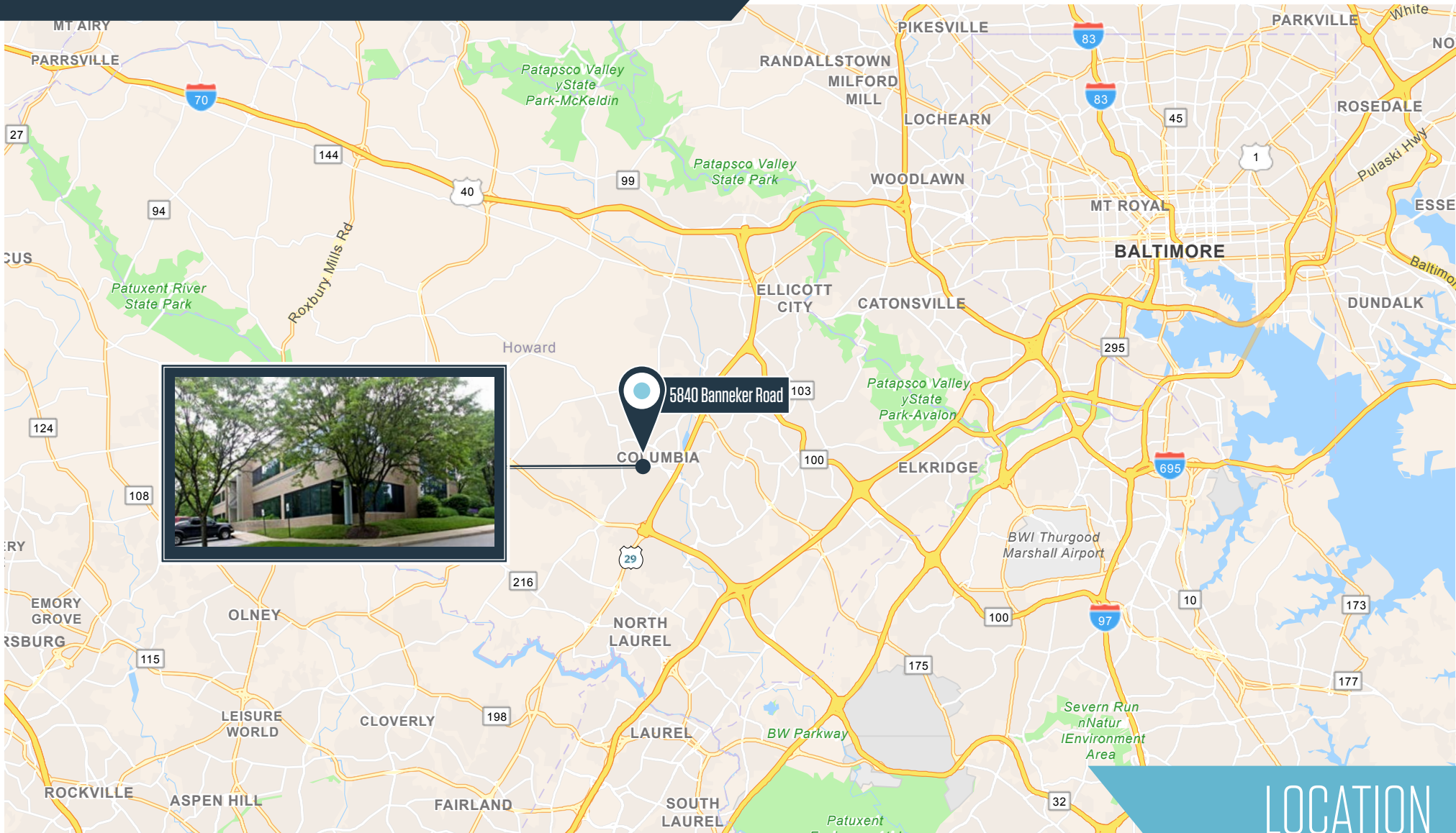
Austin Eber
aeber@klnb.com
443-574-1414

9881 Broken Land Pkwy, #300
Columbia, MD 21043
klnb.com

NAklnb

BANNEKER BUILDING

5840 Banneker Road, Columbia, Maryland
Howard County



LOCATION

Abby Glassberg
aglassberg@klnb.com
443-574-1422

Steele Stanwick
sstanwick@klnb.com
443-574-1420

Austin Eber
aeber@klnb.com
443-574-1414

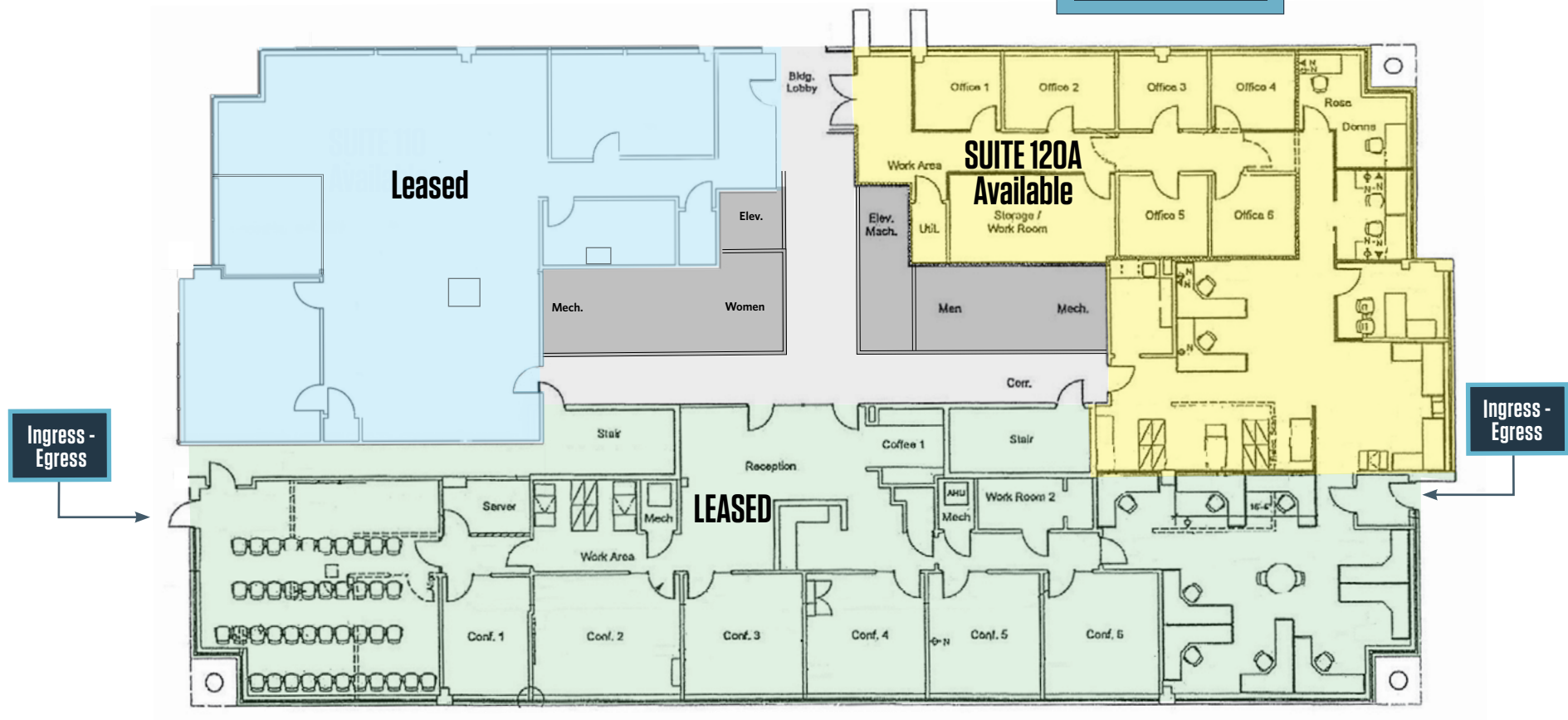
9881 Broken Land Pkwy, #300
Columbia, MD 21043
klnb.com



BANNEKER BUILDING

5840 Banneker Road, Columbia, Maryland
Howard County

SUITE 120A
3,000 SF



FLOOR PLANS

Abby Glassberg
aglassberg@klnb.com
443-574-1422

Steele Stanwick
sstanwick@klnb.com
443-574-1420

Austin Eber
aeber@klnb.com
443-574-1414

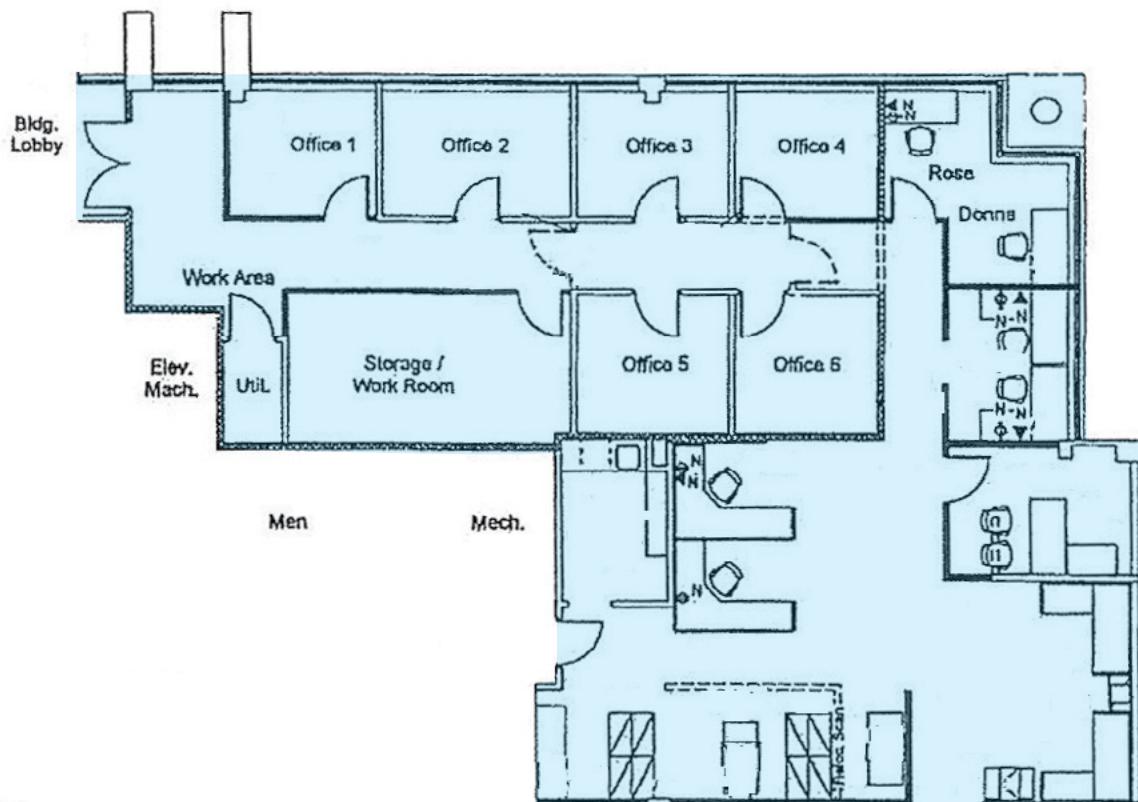
9881 Broken Land Pkwy, #300
Columbia, MD 21043
klnb.com



BANNEKER BUILDING

5840 Banneker Road, Columbia, Maryland
Howard County

SUITE 120A
3,000 SF



FLOOR PLANS

Abby Glassberg
aglassberg@klnb.com
443-574-1422

Steele Stanwick
sstanwick@klnb.com
443-574-1420

Austin Eber
aeber@klnb.com
443-574-1414

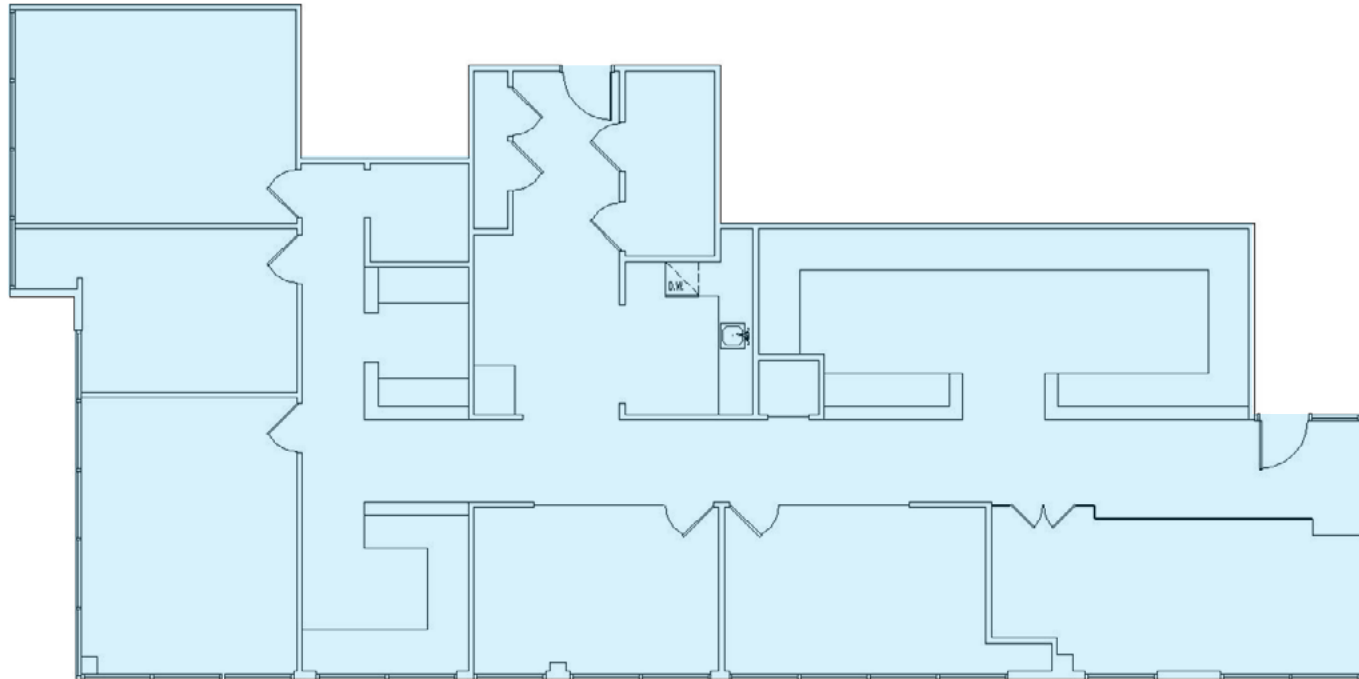
9881 Broken Land Pkwy, #300
Columbia, MD 21043
klnb.com

NAklnb

BANNEKER BUILDING

5840 Banneker Road, Columbia, Maryland
Howard County

SUITE 200
2,582 SF



FLOOR PLANS

Abby Glassberg
aglassberg@klnb.com
443-574-1422

Steele Stanwick
sstanwick@klnb.com
443-574-1420

Austin Eber
aeber@klnb.com
443-574-1414

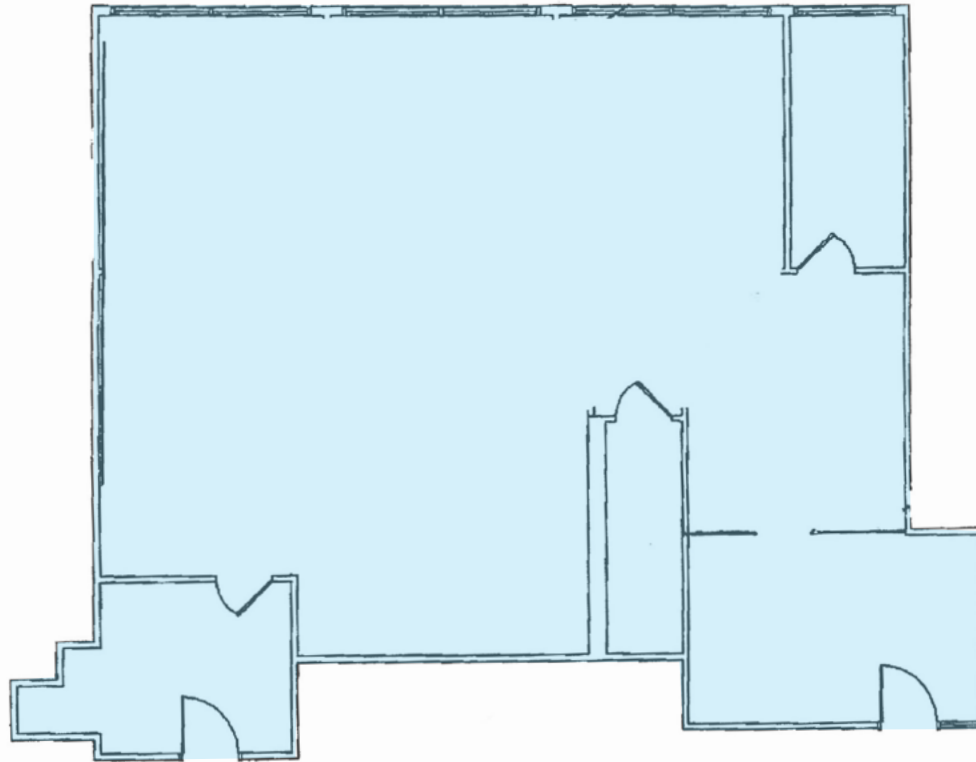
9881 Broken Land Pkwy, #300
Columbia, MD 21043
klnb.com

NAIklnb

BANNEKER BUILDING

5840 Banneker Road, Columbia, Maryland
Howard County

SUITE 270
1,465 SF



FLOOR PLANS

Abby Glassberg
aglassberg@klnb.com
443-574-1422

Steele Stanwick
sstanwick@klnb.com
443-574-1420

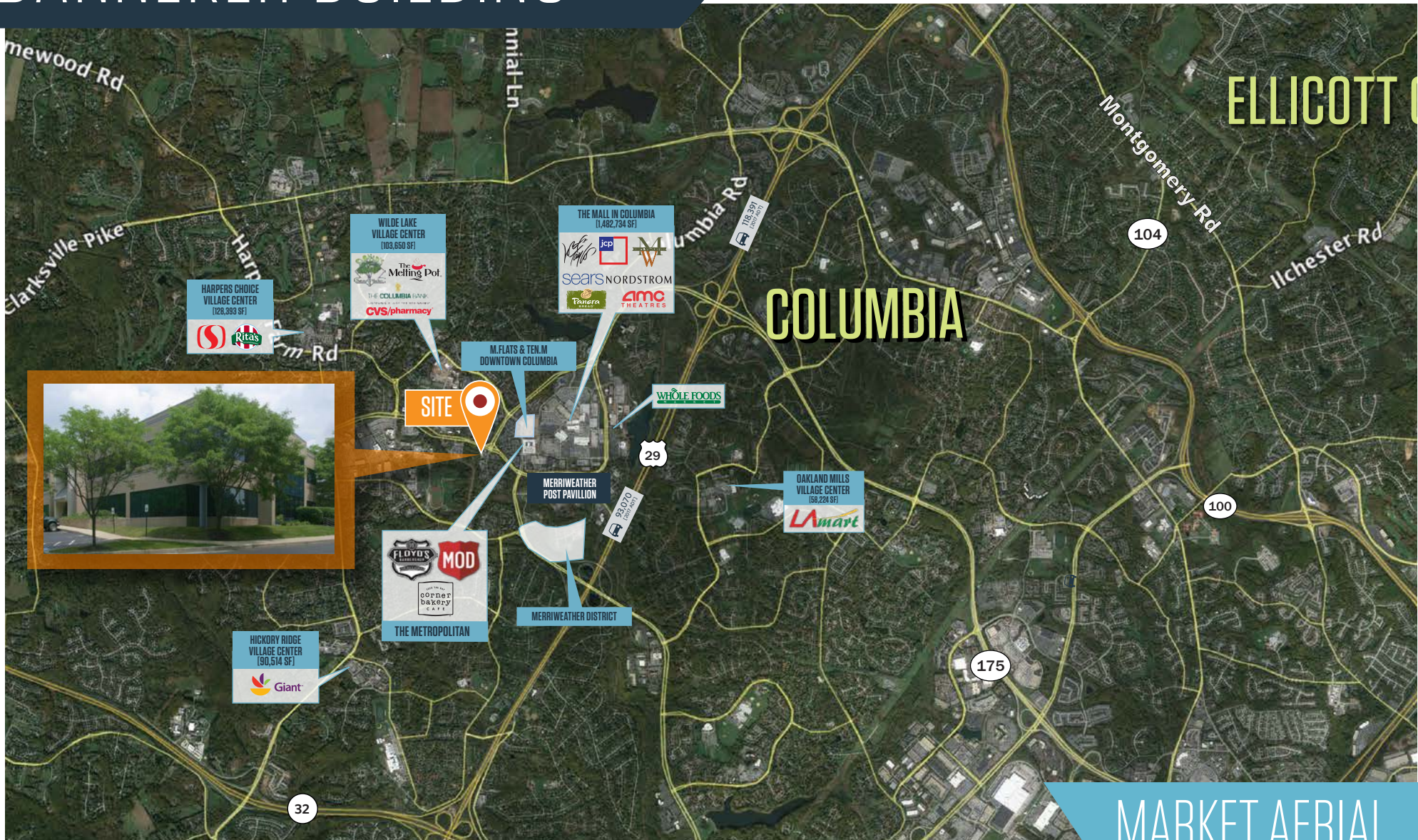
Austin Eber
aeber@klnb.com
443-574-1414

9881 Broken Land Pkwy, #300
Columbia, MD 21043
klnb.com

NAIklnb

BANNEKER BUILDING

5840 Banneker Road, Columbia, Maryland
Howard County



Abby Glassberg
aglassberg@klnb.com
443-574-1422

Steele Stanwick
sstanwick@klnb.com
443-574-1420

Austin Eber
aeber@klnb.com
443-574-1414

9881 Broken Land Pkwy, #300
Columbia, MD 21043
klnb.com



BANNEKER BUILDING

5840 Banneker Road, Columbia, Maryland
Howard County

CLICK TO VIEW PROPERTY WEBSITE

For More Information, Please Contact:

Abby Glassberg

aglassberg@klnb.com
443-574-1433

Steele Stanwick

sstanwick@klnb.com
443-574-1420

Austin Eber

aeber@klnb.com
443-574-1414

9881 Broken Land Parkway, Suite 300
Columbia, MD 21046

klnb.com



[instagram.com/klnbcre](https://www.instagram.com/klnbcre)



[linkedin.com/company/klnb](https://www.linkedin.com/company/klnb)



[facebook.com/KLNBCRE](https://www.facebook.com/KLNBCRE)

While we have no reason to doubt the accuracy of any of the information supplied, we cannot, and do not, guarantee its accuracy. All information should be independently verified prior to a purchase or lease of the property. We are not responsible for errors, omissions, misuse, or misinterpretation of information contained herein and make no warranty of any kind, express or implied, with respect to the property or any other matters.

NAIklnb