

**RE/MAX****COMMERCIAL**

FOR SALE

1116, 1122, 1137 E. Boxelder Road



1116 E. Boxelder Road
\$574,398

1122 E. Boxelder Road
\$1,081,488

1137 E. Boxelder Road
\$696,960

Prime commercial property on Boxelder Road, just steps from the high-traffic intersection of Hwy 59 and Boxelder, offers outstanding visibility and access for new businesses. Three various sized lots provide many options for new business opportunities. The lots are also located in front of a current hotel Home 2 Suites and they are soon to start a new Hampton Inn - both Hilton properties. The lots also offer some concrete parking areas already established. Any new business will also work with the hotels on a cross-parking agreement. There may be options to increase or decrease the size of the lots depending on needs and overall flow amongst the properties. Great opportunity in a high-traffic area and location.



Ryan Conklin - Broker

RE/MAX Professionals

YOUR REAL ESTATE CONSULTANT

907 E. Boxelder Rd.
Gillette, Wyoming
82718

Phone: 307-682-6622
Cell: 307-660-8144
E mail: ryan@remaxwy.com



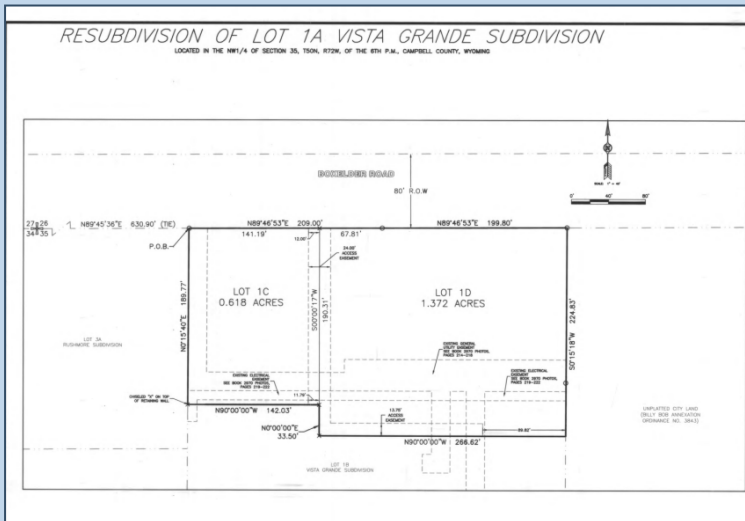
Each office independently owned and operated. All information above is deemed reliable but buyer should do additional research.



FOR SALE

1116, 1122, 1137 E. Boxelder Road

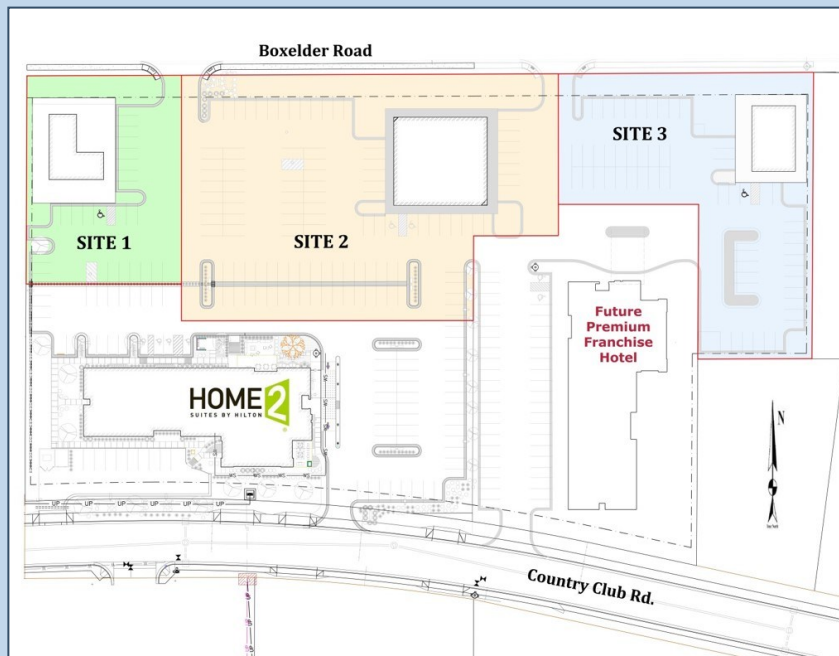
Plat Map



Zoning Map



Concept Plan



Ryan Conklin - Broker

RE/MAX Professionals

YOUR REAL ESTATE CONSULTANT

907 E. Boxelder Rd.
Gillette, Wyoming
82718

Phone: 307-682-6622
Cell: 307-660-8144
E mail: ryan@remaxwy.com



RE/MAX

COMMERCIAL

FOR SALE

1116, 1122, 1137 E. Boxelder Road



Ryan Conklin - Broker
RE/MAX Professionals

YOUR REAL ESTATE CONSULTANT

907 E. Boxelder Rd.
Gillette, Wyoming
82718

Phone: 307-682-6622
Cell: 307-660-8144
E mail: ryan@remaxwy.com

RE/MAX

COMMERCIAL

Each office independently owned and operated. All information above deemed reliable. But buyer should do additional research.