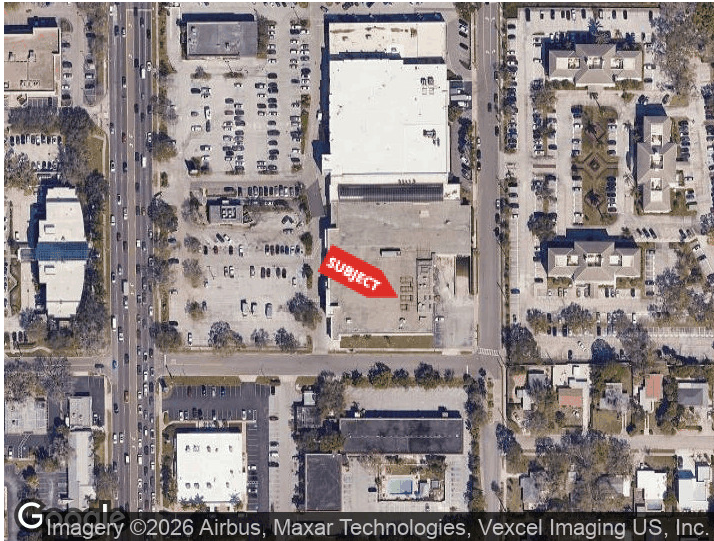




**RARE 50,000 SF RETAIL SPACE ON US-41 NEAR DOWNTOWN SARASOTA**  
 1325 S TAMIAMI TRL  
 SARASOTA, FLORIDA 34239

**PROPERTY HIGHLIGHTS**

- ±50,000 SF big box space (expandable to ±75,000 SF)
- Former grocery store with open layout
- 16' clear ceiling height
- Excellent visibility along S Tamiami Trail (US-41)
- Ample on-site parking



Imagery ©2026 Airbus, Maxar Technologies, Vexcel Imaging US, Inc.

DEMOGRAPHICS	0.25 MILES	0.5 MILES	1 MILE
Total Households	378	1,323	4,743
Total Population	750	2,656	10,053
Average HH Income	\$79,870	\$93,483	\$132,816

For More Information  
**TYLER SLUMAN**  
 Commercial Specialist  
 941 840 3954  
 tyler@americanpropertygroup.com

## RARE 50,000 SF RETAIL SPACE ON US-41 NEAR DOWNTOWN SARASOTA



### OFFERING SUMMARY

Lease Rate:	Negotiable
Available SF:	50,000 SF
Lot Size:	144,425 SF
Year Built:	1958
Zoning:	CGD

### PROPERTY OVERVIEW

American Property Group presents 1325 S Tamiami Trail, Sarasota, FL 34239

Property Type: Retail / Big Box Space

Available Size: ±50,000 SF (Expandable to ±75,000 SF)

This ±50,000 SF former grocery store (Sweetbay) presents a rare large-format retail opportunity in the Sarasota market. Positioned along highly trafficked S Tamiami Trail, the property benefits from strong visibility and proximity to Sarasota Memorial Hospital, Sarasota High School, and downtown Sarasota. The space offers flexibility for a wide range of retail, fitness, medical, or redevelopment uses, with the potential to expand up to ±75,000 SF.



### TYLER SLUMAN

Commercial Specialist  
941.840.3954  
tyler@americanpropertygroup.com

**AMERICAN  
PROPERTY GROUP**  
OF SARASOTA, INC.

RARE 50,000 SF RETAIL SPACE ON US-41 NEAR DOWNTOWN SARASOTA

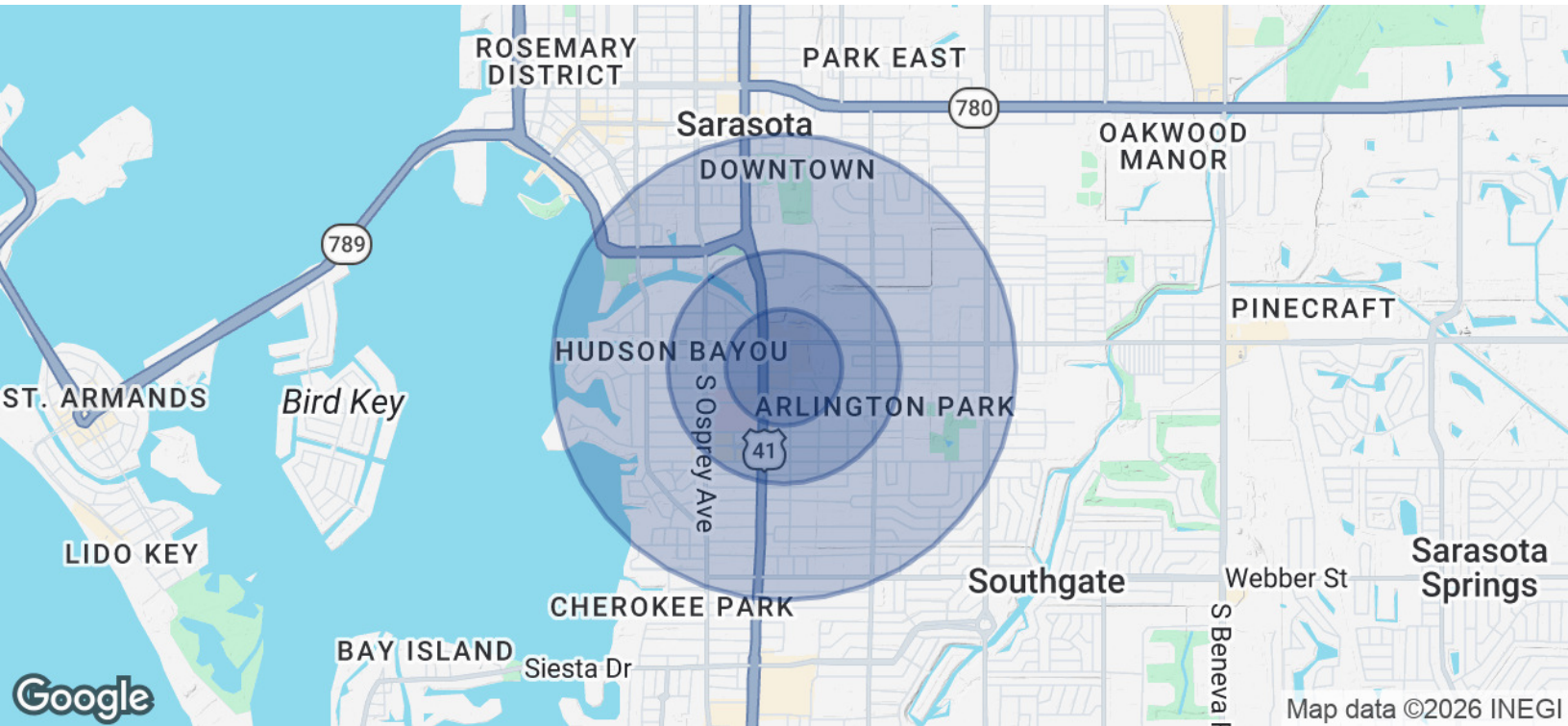


**TYLER SLUMAN**

Commercial Specialist  
941.840.3954  
tyler@americanpropertygroup.com

**AMERICAN  
PROPERTY GROUP**  
OF SARASOTA, INC.

RARE 50,000 SF RETAIL SPACE ON US-41 NEAR DOWNTOWN SARASOTA



POPULATION	0.25 MILES	0.5 MILES	1 MILE
Total Population	750	2,656	10,053
Average Age	59.9	57.0	54.3
Average Age (Male)	54.2	52.6	50.3
Average Age (Female)	62.3	60.1	58.0
HOUSEHOLDS & INCOME	0.25 MILES	0.5 MILES	1 MILE
Total Households	378	1,323	4,743
# of Persons per HH	2.0	2.0	2.1
Average HH Income	\$79,870	\$93,483	\$132,816
Average House Value	\$442,028	\$486,367	\$685,106

2023 American Community Survey (ACS)

**TYLER SLUMAN**

Commercial Specialist  
 941.840.3954  
 tyler@americanpropertygroup.com

