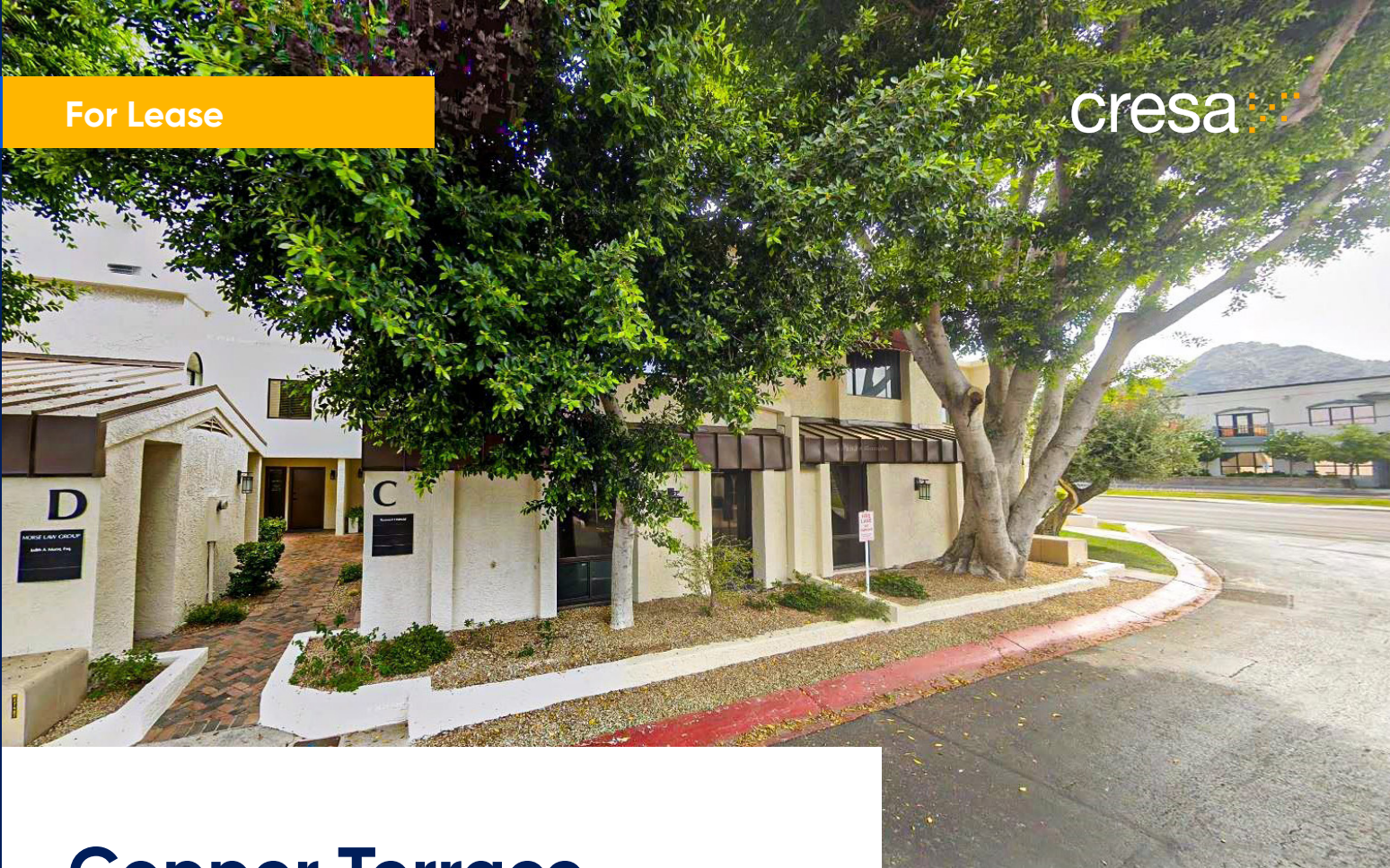


For Lease

cresa



Copper Terrace

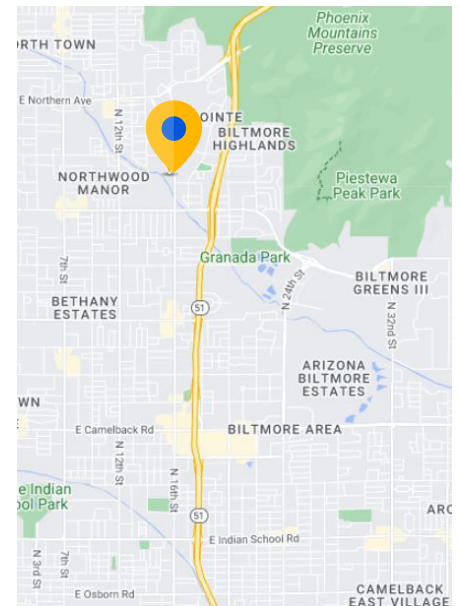
Phoenix, AZ 85020

Overview

Building:	7220 N 16th St. Phoenix, AZ 85020
Premises:	Building C 2nd Floor ±1,540 SF
Building Class:	Office Condo
Rental Rate:	Withheld
Zoning:	C-O Commercial Office
Parking:	5.00/1,000 SF
Year Built:	1982

Building Highlights

- Two-story office condo building
- Surrounded by abundant retail, and restaurant amenities
- Convenient access to the SR-51 Piastewa Peak Parkway via full diamond interchanges at Northern Ave. & Glendale Ave.
- Offers easy access to Loop 101 and I-10, The Camelback Corridor, Downtown Phoenix and Sky Harbor International Airport



For more information:



Jake Bonnell

602.826.8615 mobile
jbonnell@cresa.com

Cresa

2398 E Camelback Rd. Suite 900
Phoenix, AZ 85016

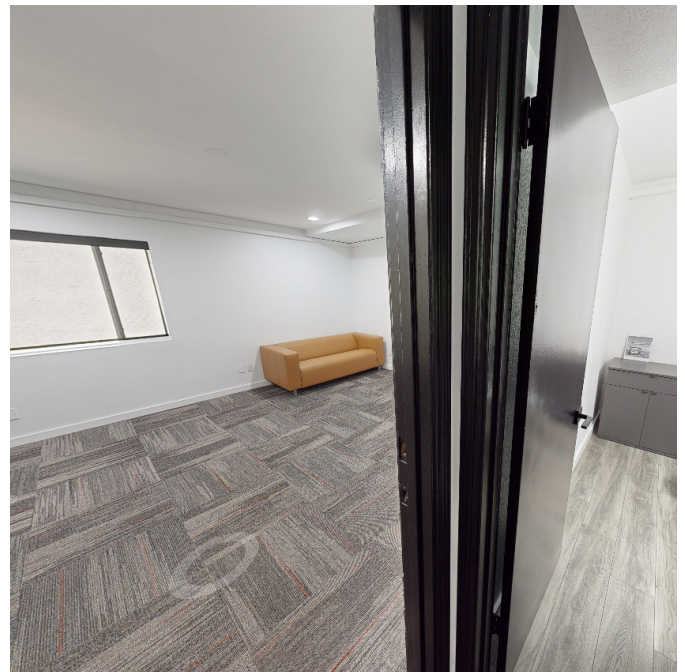
For Lease

cresa

Copper Terrace | Building C | 2nd Floor

7220 N 16th St. Phoenix, AZ 85020

Click Here For Virtual Tour  **Matterport**



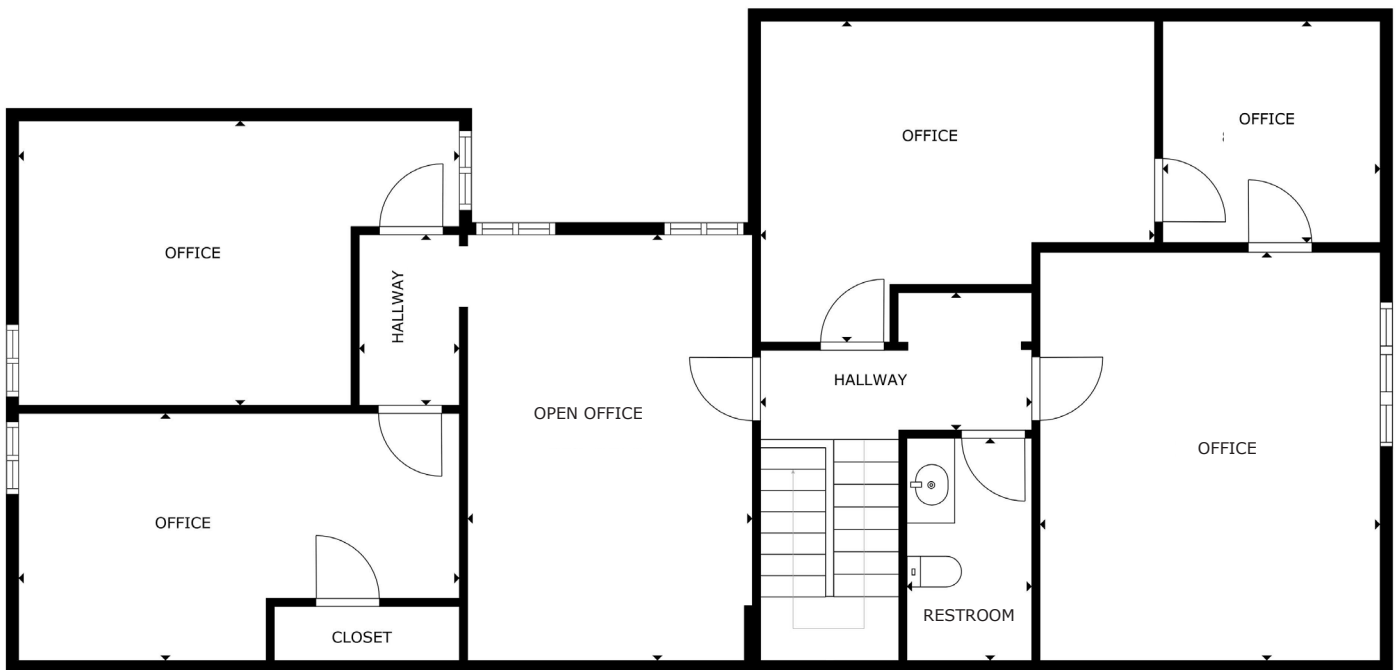
For Lease

cresa

Copper Terrace | Building C

7220 N 16th St. Phoenix, AZ 85020

2nd Floor



Space Highlights

- ±1,540 SF
- Restroom, 5 Offices, Bullpen

[Click Here For Virtual Tour](#)  **Matterport®**

Cresa © 2025. All rights reserved. The information contained in this document has been obtained from sources believed reliable. While Cresa does not doubt its accuracy, Cresa has not verified it and makes no guarantee, warranty, or representation about it. It is your responsibility to independently confirm its accuracy and completeness. Any projections, opinions, assumptions or estimates used are for example only and do not represent the current or future performance of the property. The value of this transaction to you depends on tax and other factors which should be evaluated by your tax, financial and legal advisors. You and your advisors should conduct a careful, independent investigation of the property to determine to your satisfaction the suitability of the property for your needs.

For Lease

cresa

Copper Terrace | Building C | 2nd Floor

Phoenix, AZ 85020

