

777 Schwab Road Suite J Hatfield, PA. 19440

For Sale by Owner Operator

Asking Price \$730,000

5,424 Sq.Ft.

Operating Expense

RE Taxes: \$7,787.00

Condo Fees:

Condo Fees: \$3,107.00

Reserve Fees: \$3,355.00

Insurance: \$3,000

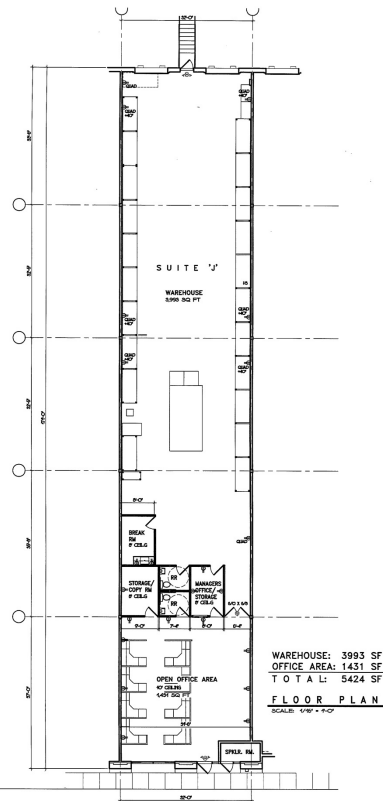
One time Capital Contribution (due at settlement):
\$3,000.00

Altemose Realty Corp
2880 Bergey Road
Suite D
Hatfield, PA. 19440
215-996-1234





C:\Documents\JohnMy Documents\Active Projects\Roger\Schwab Road\Suite 'J' ATC Rehab.dwg, 5/13/2013 1:46:55 PM



WAREHOUSE: 3993 SF
OFFICE AREA: 1431 SF
TOTAL: 5424 SF
FLOOR PLAN
SCALE: 1/16" = 1'-0"

SCHWAB ROAD
INDUSTRIAL ASSOC.
2880 BERGEY ROAD
HATFIELD, PA. 19440
215-396-1234

SUITE 'J'
FLOOR PLAN

Project
Date: 05/13/13
Scale: 1/16" = 1'-0"

Sheet
1 OF 1

Features:

- 1,431 sq.ft. office
 - fully air-conditioned and heated
 - open area for showroom or cubicles
- 3,993 sq.ft. warehouse
 - heated
 - One (1) loading dock door
 - One (1) knockout to add additional loading dock
- Racking negotiable

Suite information:

- Electric service 120/208 volt; 3 phase - PPL
- Gas - natural gas service 2" line - PECO
- Water service - North Penn Water Authority
- Sewer service - Hatfield Municipal Authority

